

18
SECTION

14
TOWN

07
RANGE

ADAMS COUNTY

COUNTY CORNER NO: 62

ROMPORTOL ID: 41407180020

PUBLIC LAND SURVEY MONUMENT RECORD

TYPE OF MONUMENT: HARRISON
ADAMS COUNTY COORDINATES, NAD 83 (2007)

N. 116766.023

E. 559905.923

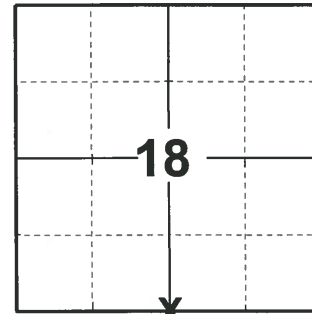
ELEVATION- DATUM

FIELD WORK DATE: 04/20/2020

BASIS FOR MONUMENT LOCATION

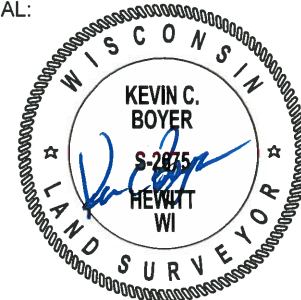
1975 - PLS 922 FOUND STONE 7' NORTH OF FENCE CORNER SET BY UNKNOWN SURVEYOR. FIT TRANSIT-TAPE TRAVERSE OF SECTION GOOD. CHECKED COUNTY SURVEY RECORDS FOR RESURVEYS AND NONE WERE ON FILE. LEFT STONE ON GROUND BY HARRISON STONE WAS 24" HIGH WITH A BASE OF 15" THAT TAPERED TO A FLAT POINT OF 5" WIDE ON TOP.

2020 - PLS 2675 FOUND HARRISON FLUSH WITH THE GROUND AND ALONG THE NORTH SIDE OF A TAPERED STONE AND 4 WITNESSES. THE MONUMENT AGREES WITH ALL 4 WITNESSES. ACCEPTED THE HARRISON AS THE CORNER LOCATION. SET 4 NEW TIES AND MEASURED TO THE EXISTING WITNESSES.



LOCATION
(INDICATE CORNER BY "X")

SEAL:



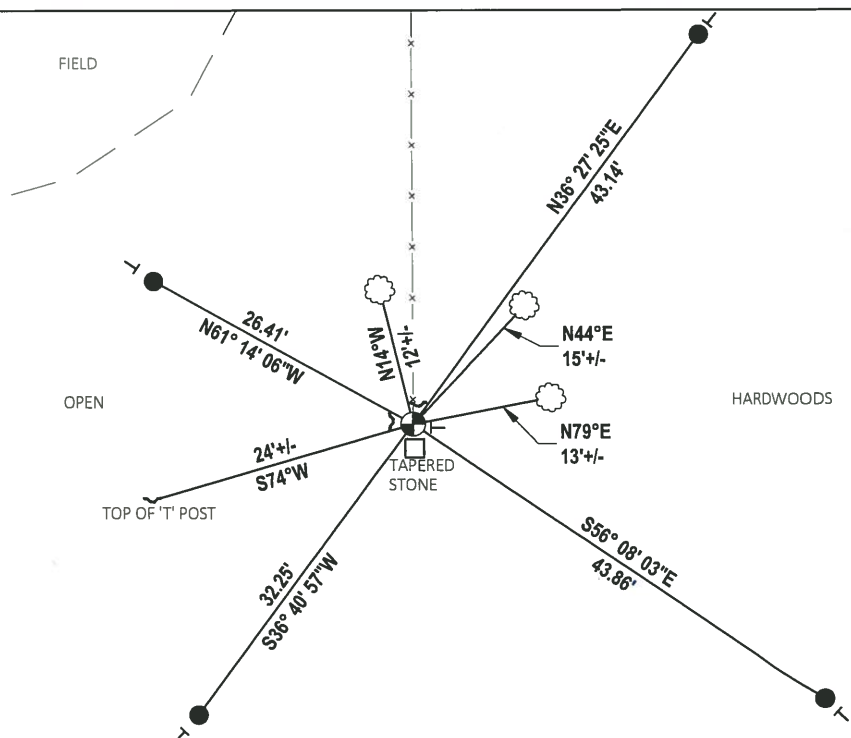
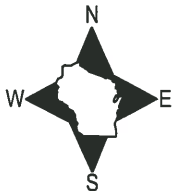
DATA SHOWN HERE ON THIS TIE SHEET IS CORRECT AND COMPLETE TO THE BEST OF MY KNOWLEDGE AND BELIEF.

PROFESSIONAL LAND SURVEYOR

DATE 5/28/2020

- TIE SKETCH

NOTE: CORNER LANDS JUST NORTH OF A TAPERED STONE.



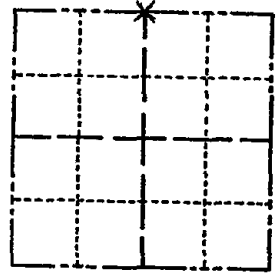
- SET 3/4" x 18" IRON REBAR, 1.50#/FT
- ⊕ FOUND HARRISON MONUMENT
- ~ STEEL FENCE POST
- ┌ VINYL "T" POST
- ⊗ WITNESS TREE

ADAMS COUNTY

Survey Monument Record

TYPE OF MONUMENT: 30" HARRISON
 STATE PLANE COORDINATES: N _____
 E _____
 ELEVATION — M.S.L. DATUM: _____
 THETA ANGLE: _____
 FIELD BOOK: _____ PAGE _____

CORNER NO. 756
 SECTION 19
 TOWN 14-N
 RANGE 7-E



LOCATION
(Indicated by 'X')

SEAL:



BASIS FOR MONUMENT LOCATION

(Use reverse side if necessary)

Show info such as: History of corner, with reference to Vol. and pg, dates, surveyor; exact description of monument replaced; if location computed, by taped or EDM traverse; landowner remarks, etc.

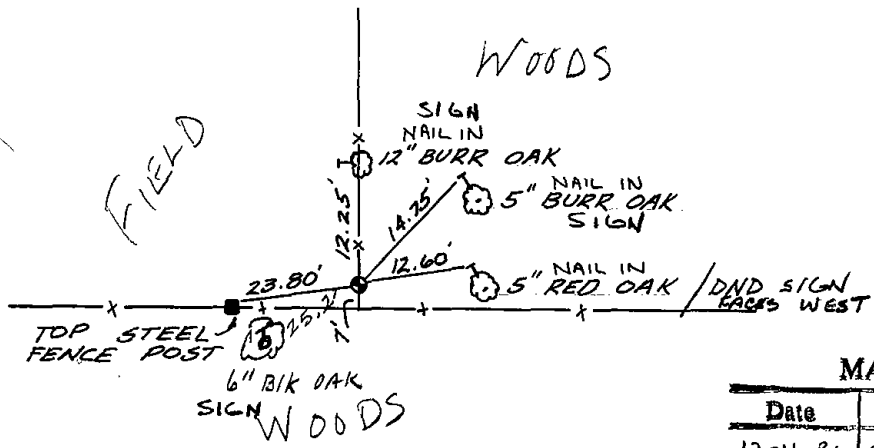
FOUND STONE 7' NORTH OF FENCE CORNER SET BY UNKNOWN SURVEYOR. FIT TRANSIT-TAPE TRAVERSE OF SECTION GOOD. CHECKED CO. SURVEY RECORDS FOR RESURVEYS AND NONE WERE ON FILE. WE LEFT STONE ON GROUND BY HARRISON. STONE WAS 24" HIGH WITH A BASE OF 15" THAT TAPERED TO A FLAT POINT OF 5" WIDE ON TOP.
 CORNER O.K. 10-28-76 GR-DCH

CERTIFIED CORRECT:

Frederic W. Zietlow
 Registered Land Surveyor
 DATE: JULY 31, 1975

TIE SKETCH

(Show at least four ties)



MAINTENANCE RECORD

Date	Init.	Remarks
12-11-81	SK-DW	CORNER O.K
3-21-86	PV-SS	" "
8-26-91	SS-JG	" "
4-25-96	JG-SS	1-NEW, COR OK
4-3-02	JG	OK
1-19-06	JG	OK