

PUBLIC LAND SURVEY MONUMENT RECORD

TYPE OF MONUMENT: HARRISON (BROKEN-TOP)
 ADAMS COUNTY COORDINATES, NAD 83 (2007)

N. 116725.524

E. 573109.588

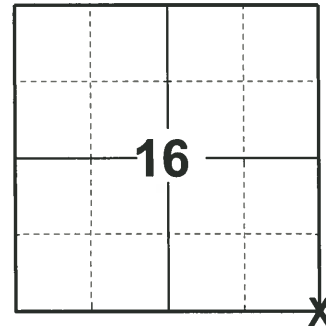
ELEVATION- _____ DATUM _____

FIELD WORK DATE: 04/15/2020

BASIS FOR MONUMENT LOCATION

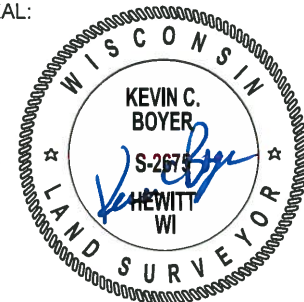
1974 - PLS 878 EXCAVATED WITH BACKHOE A HOLE 16'X16'X5' DEEP. FIRST FOUND STUMP OF ORIGINAL BURR OAK BEARING TREE. WAS THEN ABLE TO EXCAVATE FURTHER AND FIND A DEPOSIT OF BROKEN CROCKERY MARKING THE CORNER. EXCAVATION WITNESSES BY ARCHIE COTHERS, A LIFELONG RESIDENT OF THE AREA, WHO HAD SEEN THE CROCKERY A NUMBER OF TIME OVER THE YEARS. THERE WAS ALSO A REMNANT OF WOODEN STAKE IN THE CROCKERY. LEFT CROCKERY AS FOUND, PUT A CHUNK OF BLACKTOP ON TOP, AND SET HARRISON MONUMENT ON TOP OF THAT.

2020 - PLS 2675 FOUND HARRISON (BROKEN-TOP) 12"± BELOW THE ROAD SURFACE AND DID NOT RECOVER ANY TIES. ACCEPTED THE HARRISON (BROKEN-TOP) AS THE BEST EVIDENCE OF THE CORNER LOCATION AND LOCATED 4 WISDOT ALUMINUM CAP MONUMENT AS TIES.



LOCATION
 (INDICATE CORNER BY "X")

SEAL:



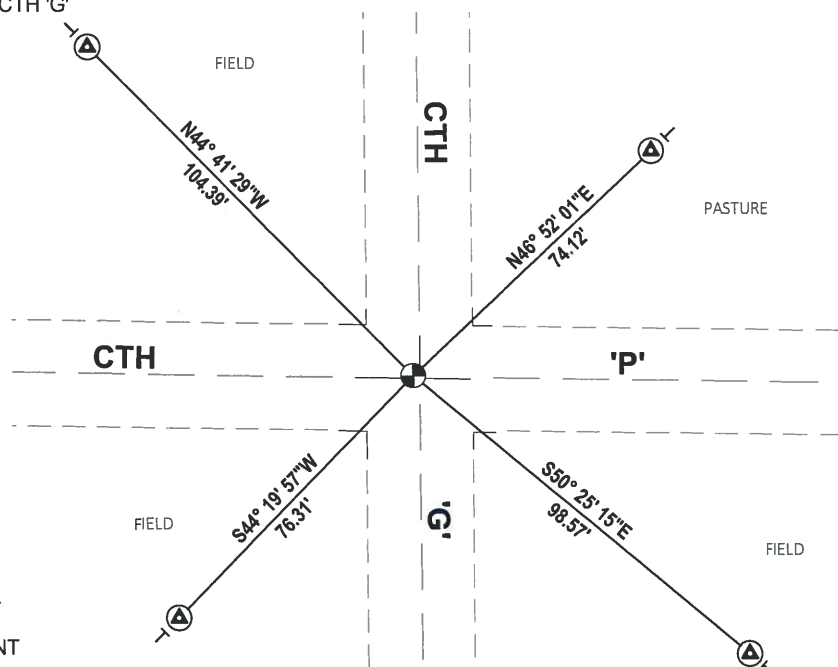
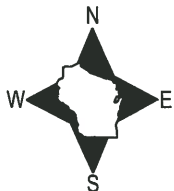
DATA SHOWN HERE ON THIS TIE SHEET IS CORRECT AND COMPLETE TO THE BEST OF MY KNOWLEDGE AND BELIEF.

PROFESSIONAL LAND SURVEYOR

DATE 5/28/2020

- TIE SKETCH

NOTE: THE CORNER LANDS 15'± WEST OF CTH 'G' CENTERLINE AND .5'± NORTH OF CTH 'P' CENTERLINE.



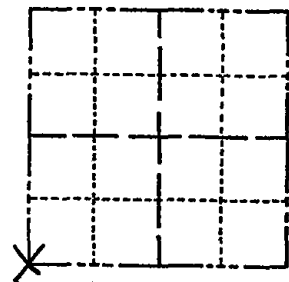
- ⊙ FOUND WISDOT ALUMINUM CAP MONUMENT
- ⊕ FOUND HARRISON (BROKEN-TOP) MONUMENT
- ⊖ VINYL "T" POST

ADAMS COUNTY

Survey Monument Record

TYPE OF MONUMENT: Harrison standard
STATE PLANE COORDINATES: N _____
E _____
ELEVATION — M.S.L. DATUM: _____
THETA ANGLE: _____
FIELD BOOK: _____ PAGE _____

CORNER NO. 405⁶⁷
SECTION 15
TOWN 14
RANGE 7



BASIS FOR MONUMENT LOCATION

(Use reverse side if necessary)

Show info such as: History of corner, with reference to Vol. and pg, dates, surveyor; exact description of monument replaced; if location computed, by taped or EDM traverse; landowner remarks, etc.

Excavated with backhoe a hole 16' x 16' x 5' deep. First found stump of original burr oak bearing tree. Was then able to excavate further and find a deposit of broken crockery marking the corner. Excavation witnessed by Archie Cothers, a lifelong resident of the arsa, who had seen the crockery a number of times over the years. There was also a remnat of a wooden stake in the crockery. Left crockery as found, put a chunk of blacktop on top, and set Harrison monument on top of that.



CERTIFIED CORRECT:

Anthony B. Kiedrowski
Registered Land Surveyor
DATE: 6/12/74

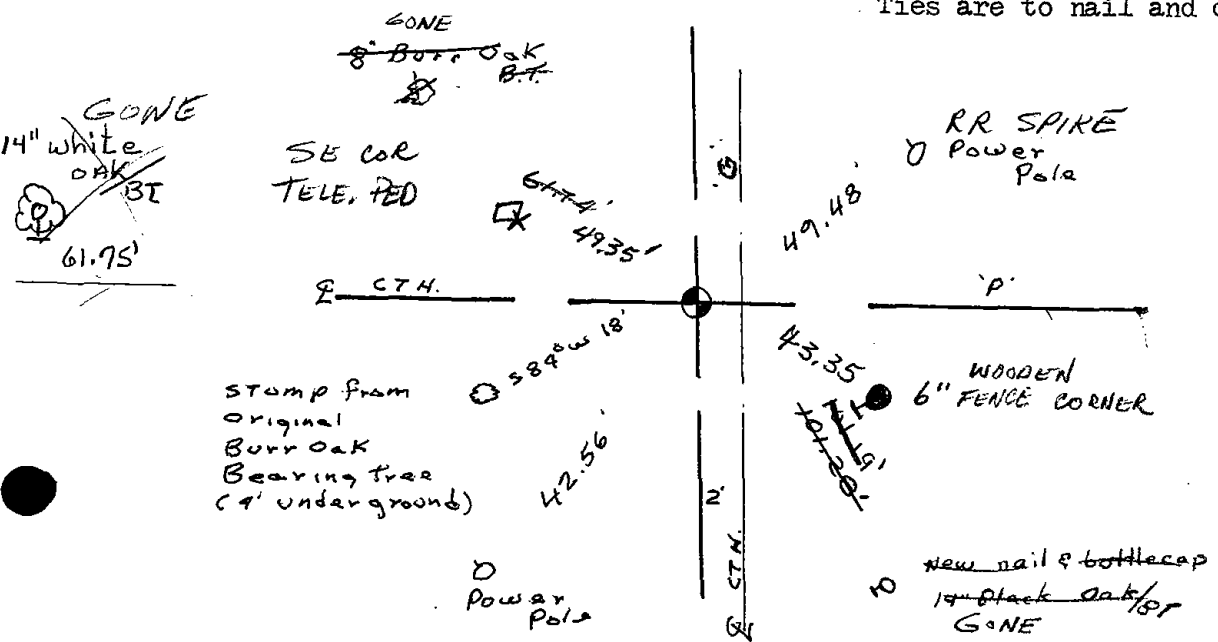
CORNER O.K.
10-22-76 RN-SS
OK 11-5-90 JG-SS

TIE SKETCH

(Show at least four ties)

OK 11/28/95 - JG-SS
2-GONE, 2-NEW, 6/11/01 - JG
OK, 2-7-06 - JG
" 2-25-11 SS

Ties are to nail and disc.



MAINTENANCE RECORD

Date	Init.	Remarks
12-7-81	SK-DW	
2-19-86	GP-S	014