

15  
SECTION

14  
TOWN

07  
RANGE

# ADAMS COUNTY

COUNTY CORNER NO: 69

ROMPORTOL ID: 41407150000

## PUBLIC LAND SURVEY MONUMENT RECORD

TYPE OF MONUMENT: RAILROAD SPIKE  
ADAMS COUNTY COORDINATES, NAD 83 (2007)

N. 116675.667

E. 578363.453

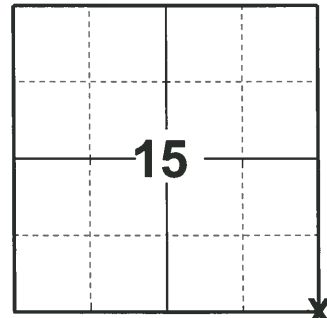
ELEVATION- - - - - DATUM - - - - -

FIELD WORK DATE: 04/14/2020

### BASIS FOR MONUMENT LOCATION

1976 - PLS 1191 RESEARCHED GOVERNMENT AND COUNTY SURVEYORS NOTES, FOUND NOTHING ON RECORD AS BEING SET AT CORNER, FOUND BEARING TREE ESTABLISHED BY BARRETT (1895) STILL STANDING. 12" DIAMETER COTTONWOOD N43-1/2°W 236 LINKS. MEASURED CORNER IN FROM 4 CARDINAL DIRECTIONS AND USED RECORDED DISTANCE TO B.T. AT THAT DIAMETER TO ESTABLISH CORNER. DUG AND FOUND REMAINS OF OLD OAK POST IN FILL AREA 2-1/2 BELOW SURFACE OF ROAD. USED THIS POINT TO SET HARRISON MONUMENT. EDM & TAPE TRAVERSE.

2020 - PLS 2675 FOUND RAILROAD SPIKE IN THE ROAD SURFACE AND 5 IRON RODS. REMOVED RAILROAD SPIKE AND FOUND NO ADDITIONAL MONUMENTS BELOW. VERIFIED CORNER BY PLAT OF SURVEY DATED FEB. 25, 1988 BY PLS 742. THE DISTANCE BETWEEN THE S1/4 AND SW BOTH AGREE. ACCEPTED THE RAILROAD SPIKE AS THE CORNER LOCATION. SET 1 NEW TIE AND MEASURED TO 5 FOUND IRON RODS.



LOCATION  
(INDICATE CORNER BY "X")

SEAL:



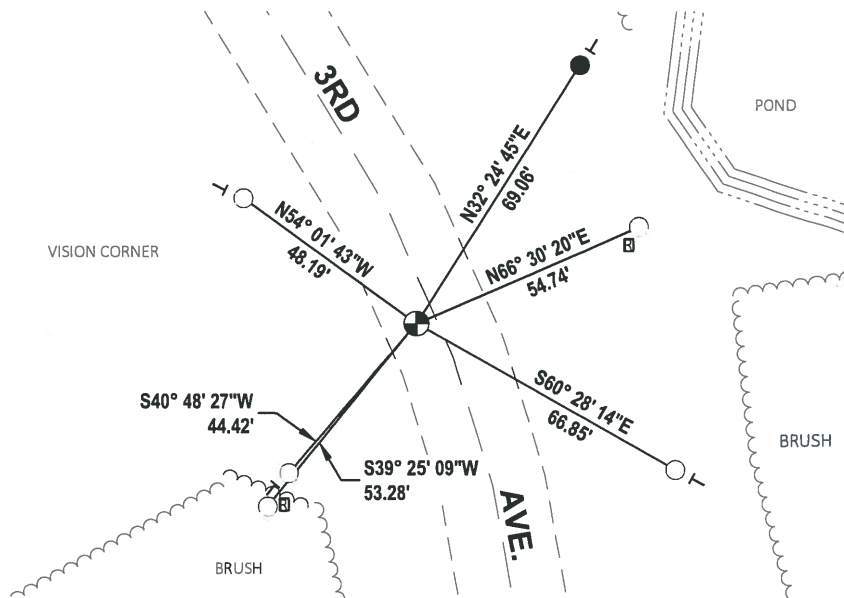
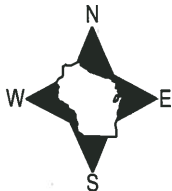
DATA SHOWN HERE ON THIS TIE SHEET IS CORRECT AND COMPLETE TO THE BEST OF MY KNOWLEDGE AND BELIEF.

PROFESSIONAL LAND SURVEYOR

DATE 5/28/2020

### - TIE SKETCH

NOTE: THE CORNER LANDS 4.5± WEST OF 3RD AVE. CENTERLINE.



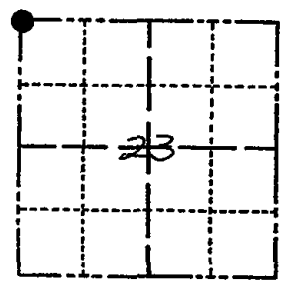
- SET 3/4" x 18" IRON REBAR, 1.50#/FT
- FOUND 3/4" IRON ROD
- FOUND RAILROAD SPIKE MONUMENT
- ▣ RIGHT OF WAY GUARD POST
- VINYL "T" POST

ADAMS COUNTY

Survey Monument Record

TYPE OF MONUMENT: HARRISON  
STATE PLANE COORDINATES: N \_\_\_\_\_  
E \_\_\_\_\_  
ELEVATION — M.S.L. DATUM: \_\_\_\_\_  
THETA ANGLE: \_\_\_\_\_  
FIELD BOOK: 510 PAGE 44-45

CORNER NO. 962  
SECTION 23  
TOWN 14 N  
RANGE 7 E



LOCATION  
(Indicated by 'X')

BASIS FOR MONUMENT LOCATION

(Use reverse side if necessary)

Show info such as: History of corner, with reference to Vol. and pg, dates, surveyor; exact description of monument replaced; if location computed, by taped or EDM traverse; landowner remarks, etc.

SEAL:



Researched Gov't and County Surveyors notes, found nothing on record as being set at corner, found bearing tape established by Barrett (1895) still standing. 12" Dia. Cottonwood N43 1/2° W 236 links. Measured corner in from 4 cardinal directions and used recorded distance to B.T. at that dia. to establish corner dug and found remains of old Oak Post in fill area 2 1/2 below surface of Road. Use this point to set Harrison Mon. E.D.M. & Tape traverse

CERTIFIED CORRECT:

Allen D. Röhl  
Registered Land Surveyor

DATE: 5-25-76

TIE SKETCH

(Show at least four ties)

