

14  
SECTION

14  
TOWN

07  
RANGE

# ADAMS COUNTY

COUNTY CORNER NO: 70

ROMPORTOL ID: 41407140020

## PUBLIC LAND SURVEY MONUMENT RECORD

TYPE OF MONUMENT: HARRISON (BROKEN-TOP)  
ADAMS COUNTY COORDINATES, NAD 83 (2007)

N. 116649.236

E. 581000.336

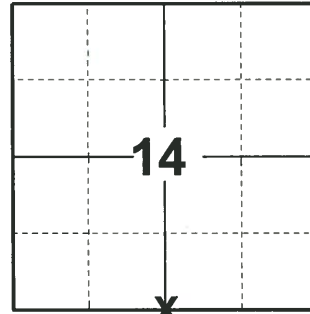
ELEVATION- - - - - DATUM - - - - -

FIELD WORK DATE: 04/14/2020

### BASIS FOR MONUMENT LOCATION

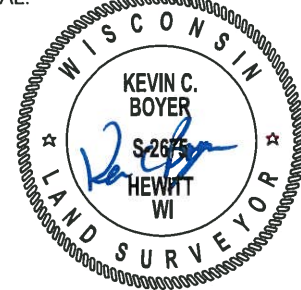
1976 - PLS 1191 RESEARCHED GOVERNMENT AND COUNTY SURVEYORS NOTES, FOUND NOTHING ON RECORD AS BEING SET AT SAID CORNER. FOUND BEARING TREES ESTABLISHED BY BARRETT APRIL 15-18, 1895 SURVEY RECORDED IN VOL. 2 PG. 165 & 166, COTTONWOOD 14" DIA. S18°W 101-1/2 LINKS. INTERSECTED RECORDED DISTANCE WITH FENCE LINE TO THE NORTH TO ESTABLISH LOCATION OF CORNER. SET HARRISON. EDM TRAVERSE.

2020 - PLS 2675 FOUND HARRISON (BROKEN-TOP) 2"± ABOVE THE GROUND AND DID NOT RECOVER ANY TIES OR WITNESSES DUE TO FIELD CULTIVATED. ACCEPTED THE HARRISON (BROKEN-TOP) AS THE BEST EVIDENCE OF THE CORNER LOCATION. SET 4 NEW TIES.



**LOCATION**  
(INDICATE CORNER BY "X")

SEAL:

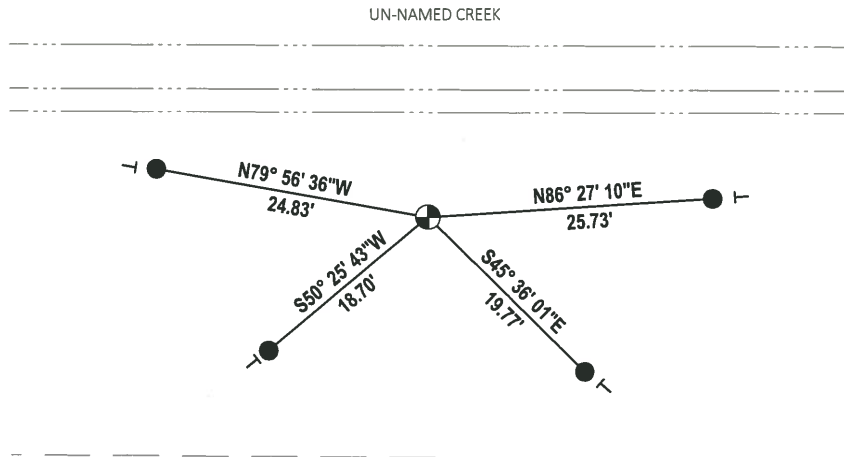
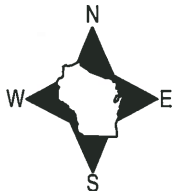


DATA SHOWN HERE ON THIS TIE SHEET IS CORRECT AND COMPLETE TO THE BEST OF MY KNOWLEDGE AND BELIEF.

PROFESSIONAL LAND SURVEYOR

DATE 5/28/2020

### - TIE SKETCH



- SET 3/4" x 18" IRON REBAR, 1.50#/FT
- ⊕ FOUND HARRISON (BROKEN-TOP) MONUMENT
- ← VINYL "T" POST

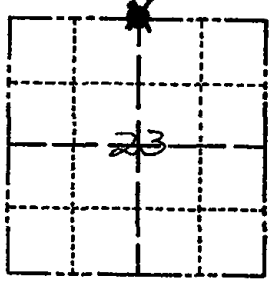
FIELD

# ADAMS COUNTY

## Survey Monument Record

TYPE OF MONUMENT: HARRISON  
 STATE PLANE COORDINATES: N \_\_\_\_\_  
 E \_\_\_\_\_  
 ELEVATION — M.S.L. DATUM: \_\_\_\_\_  
 THETA ANGLE: \_\_\_\_\_  
 FIELD BOOK: 510 PAGE 44 & 45

CORNER NO. 963  
 SECTION 23  
 TOWN 14 N  
 RANGE 7 E



LOCATION  
(Indicated by 'X')

### BASIS FOR MONUMENT LOCATION

(Use reverse side if necessary)

Show info such as: History of corner, with reference to Vol. and pg. dates, surveyor; exact description of monument replaced; if location computed, by taped or EDM traverse; landowner remarks, etc.

SEAL:

Researched Gov't and county surveyors notes, found nothing on record as being set at said corner. Found bearing tree established by Arthur Barrett April 15-18, 1895 survey recorded in Vol. 2 Pgs 165 & 166, Cottonwood 14" dia. S18°W 10 1/2 links. Intersected reboarded distance with Fe line to North to establish location of corner. E.D.M. Traverse



CERTIFIED CORRECT:

Allen D. Rohde  
 Registered Land Surveyor  
 DATE: 5-25-76

### TIE SKETCH

(Show at least four ties)

