

PUBLIC LAND SURVEY MONUMENT RECORD

TYPE OF MONUMENT: HARRISON
ADAMS COUNTY COORDINATES, NAD 83 (2007)

N. 116656.736

E. 583561.187

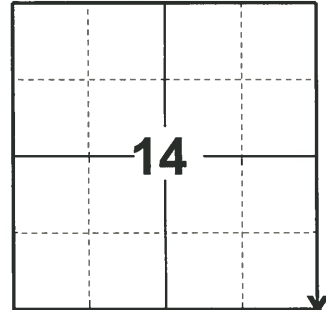
ELEVATION- - - DATUM - -

FIELD WORK DATE: 04/13/2020

BASIS FOR MONUMENT LOCATION

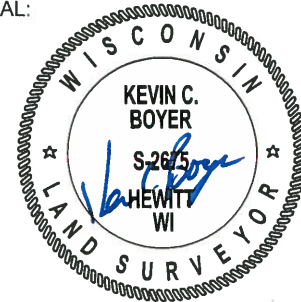
1976 - PLS 1191 RESEARCHED GOVERNMENT AND COUNTY SURVEYORS NOTES, FOUND NOTHING AS BEING SET FOR CORNER ON RECORD BUT CORNER HAD BEARING TREES ON RECORD. BARRETT, HICKORY STUMP 10" N14"W 180 LINKS, B. OAK 8" S20"E 6-1/2 LINKS (1895) GOVERNMENT NOTES CALL FOR SAME HICKORY BEFORE IT WAS CUT. FOUND NO EVIDENCE OF ANY OF THE ABOVE BT'S BUT DID FIND A PLANTED 3 SIDED STONE 5"X5"X5"X24" POINTED SIDE UP WHICH FIT OLD SURVEY NOTES DISTANCE USED THIS POINT AS THE LOCATION OF THE CORNER. SET HARRISON. EDM TRAVERSE.

2020 - PLS 2675 FOUND HARRISON 12"± BELOW THE WEST EDGE OF A SPOILS PILE AND 1 WITNESS TREE. THE MONUMENT AGREES WITH THE WITNESS TREE. ACCEPTED THE HARRISON AS THE CORNER LOCATION. SET 4 NEW TIES AND MEASURED TO THE EXISTING WITNESS TREE.



LOCATION
(INDICATE CORNER BY "X")

SEAL:

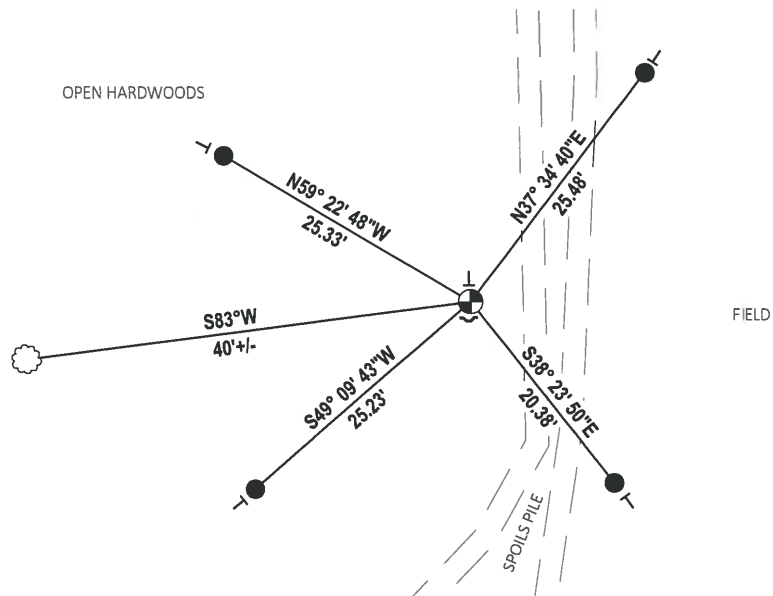
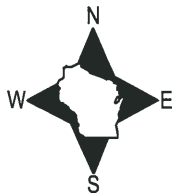


DATA SHOWN HERE ON THIS TIE SHEET IS CORRECT AND COMPLETE TO THE BEST OF MY KNOWLEDGE AND BELIEF.

PROFESSIONAL LAND SURVEYOR

DATE 5/28/2020

- TIE SKETCH



- SET 3/4" x 18" IRON REBAR, 1.50#/FT
- ⊕ FOUND HARRISON MONUMENT
- ~ STEEL FENCE POST
- ┌ VINYL "T" POST
- ☁ WITNESS TREE

ADAMS COUNTY

Survey Monument Record

TYPE OF MONUMENT: HARRISON

STATE PLANE COORDINATES: N _____

E _____

ELEVATION — M.S.L. DATUM: _____

THETA ANGLE: _____

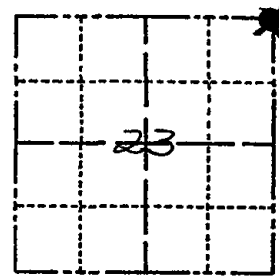
FIELD BOOK: 510 PAGE 44 & 45

CORNER NO. 964 (71)

SECTION 23

TOWN 14 N

RANGE 7 E



LOCATION
(Indicated by 'X')

SEAL:

BASIS FOR MONUMENT LOCATION

(Use reverse side if necessary)

Show info such as: History of corner, with reference to Vol. and pg. dates, surveyor; exact description of monument replaced; if location computed, by taped or EDM traverse; landowner remarks, etc.

Researched Gov't & COUNTY SURVEYORS NOTES, Found nothing as being set for corner on record but corner had Brg. traces on record BARRETT, Hickory stump 10" N14°W 100 links, B. Oak 8" S20°E 6 1/2 links (1895) Gov't notes call for same Hickory before it was cut. Found no evidence of any of the above BT'S but did find a planted 3 sided stone 5" x 5" x 5" x 24" pointed side up which fit old survey notes distance used this point as the location of the corner E.D.M. traverse



CERTIFIED CORRECT:

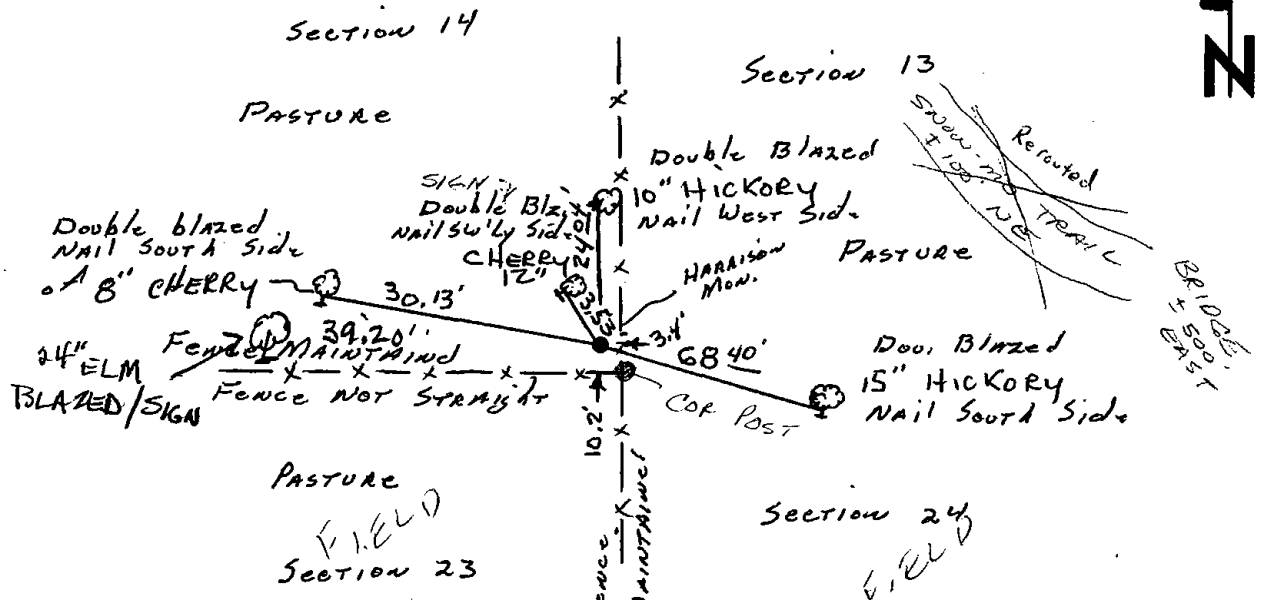
Allen D. Rohde
Registered Land Surveyor

DATE: 5-25-76

TIE SKETCH

(Show at least four ties)

Stone post 0.5' S. of post on Harrison 15' fence/ground



MAINTENANCE RECORD

Date	Init.	Remarks
12-8-81	SK-DW	Ties O.K.
3-21-86	SS	1. 1'
8-27-91	SS	OK
3-29-02	SS	OK
1-27-06	SG	1-NEW, MON. OK
1-6-12	MS	OK