

24 SECTION 14 TOWN 06 RANGE

ADAMS COUNTY

COUNTY CORNER NO: 80
ROMPORTOL ID: 41406242000

PUBLIC LAND SURVEY MONUMENT RECORD

TYPE OF MONUMENT: HARRISON
ADAMS COUNTY COORDINATES, NAD 83 (2007)

N. 114082.413
E. 557550.109

ELEVATION- --- DATUM ---

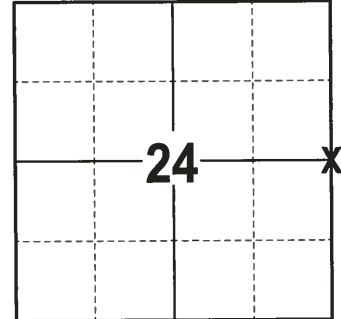
FIELD WORK DATE: 09/14/2017

BASIS FOR MONUMENT LOCATION

1975 - PLS 922 FOUND A RAILROAD SPIKE USED BY DEAN JESSE AND DAVE CLARK IN PRIOR SURVEYS THAT FIT TRANSIT TAPE TRAVERSE OF THE SECTION GOOD. CHECKED COUNTY SURVEY RECORDS AND NO PRIOR RESURVEYS WERE ON FILE. SET A 30" HARRISON MONUMENT AT THE CORNER LOCATION AND TIED OUT.

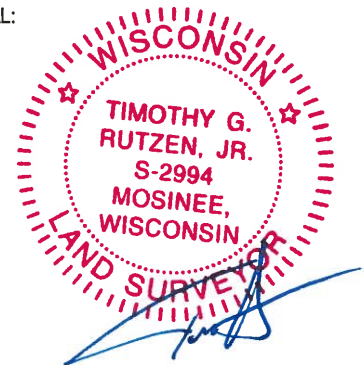
1999 - PLS 1397 EXISTING MONUMENT WAS FOUND AT THE CORNER LOCATION. MONUMENT WAS REMOVED AND RAISED DUE TO RECONSTRUCTION OF C.T.H. B. CORNER WAS RE-TIED.

2017 - PLS 2994 FOUND A HARRISON MONUMENT 8" BELOW THE ROAD SURFACE, 2 TIES AND 1 PROPERTY IRON. THE MONUMENT AGREES WITH THE EXISTING TIES. ACCEPTED THE HARRISON MONUMENT AS THE CORNER LOCATION. SET 4 NEW TIES AND RE-MEASURED TO ALL TIES AND PROPERTY IRON.



LOCATION
(INDICATE CORNER BY "X")

SEAL:

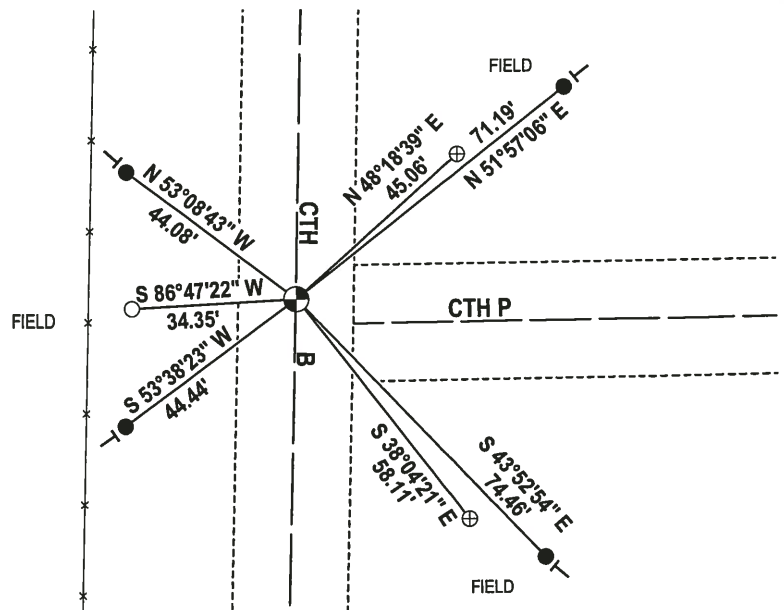
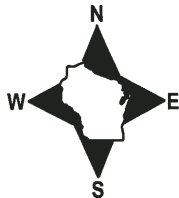


DATA SHOWN HERE ON THIS TIE SHEET IS CORRECT AND COMPLETE TO THE BEST OF MY KNOWLEDGE AND BELIEF.

PROFESSIONAL LAND SURVEYOR

DATE 11-15-17

- TIE SKETCH



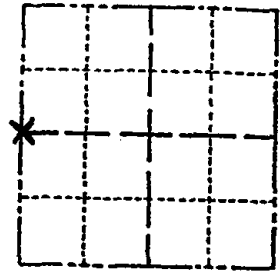
- 3/4" x 18" IRON REBAR SET, 1.50#/FT
- 3/4" IRON ROD FOUND
- ⊕ PK NAIL FOUND
- HARRISON FOUND
- VINYL "T" POST

ADAMS COUNTY

Survey Monument Record

TYPE OF MONUMENT: 30" HARRISON MARKER
 STATE PLANE COORDINATES: N _____
 E _____
 ELEVATION — M.S.L. DATUM: _____
 THETA ANGLE: _____
 FIELD BOOK: _____ PAGE _____

CORNER NO. 762
 SECTION 19
 TOWN 14N
 RANGE 7E



LOCATION
(Indicated by 'X')

SEAL:

BASIS FOR MONUMENT LOCATION

(Use reverse side if necessary)

Show info such as: History of corner, with reference to Vol. and pg. dates, surveyor; exact description of monument replaced; if location computed, by taped or EDM traverse; landowner remarks, etc.

Existing Monument was found in place.
 Monument was removed and raised due to reconstruction of C.T.H. "B". All tie measurements are horizontal measurements unless noted otherwise.

2- NEW TIES, 1-19-86 - JG
 2-25-11 OK 55

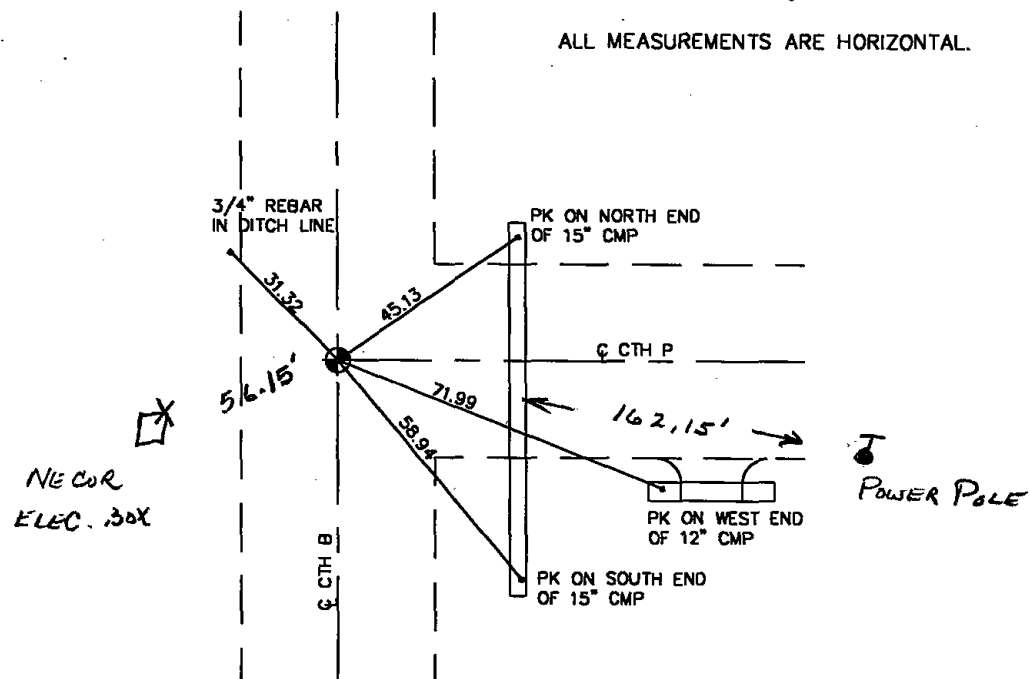


CERTIFIED CORRECT:
Dennis J. Russell
 Registered Land Surveyor
 DATE: July 26, 1999

TIE SKETCH

(Show at least four ties)

ALL MEASUREMENTS ARE HORIZONTAL.

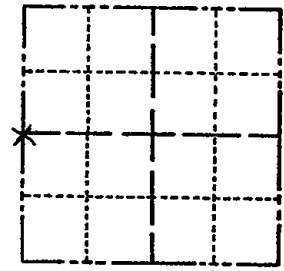


ADAMS COUNTY

Survey Monument Record

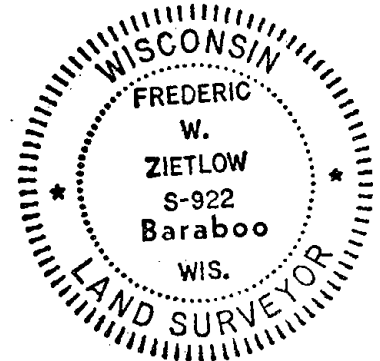
TYPE OF MONUMENT: 30" HARRISON
 STATE PLANE COORDINATES: N _____
 E _____
 ELEVATION — M.S.L. DATUM: _____
 THETA ANGLE: _____
 FIELD BOOK: _____ PAGE _____

CORNER NO. 762
 SECTION 19
 TOWN 14-N
 RANGE 7-E



LOCATION
(Indicated by 'X')

SEAL:



BASIS FOR MONUMENT LOCATION

(Use reverse side if necessary)

Show info such as: History of corner, with reference to Vol. and pg. dates, surveyor; exact description of monument replaced; if location computed, by taped or EDM traverse; landowner remarks, etc.

FOUND RAIL ROAD SPIKE USED BY DEAN JESSE & DAVE CLARK IN PRIOR SURVEYS FIT TRANSIT TAPE TRAVERSE GOOD OF SECTION. CHECKED Co. SURVEY RECORDS & NO PRIOR RESURVEYS WERE ON FILE.

CORNER O.K. 10-29-76 GR-SS
 CORNER OK, 1-GONE 12-19-90 KE-JG
 " " 1-GONE-1-NEW 11/28/95 JG-SS

CERTIFIED CORRECT:

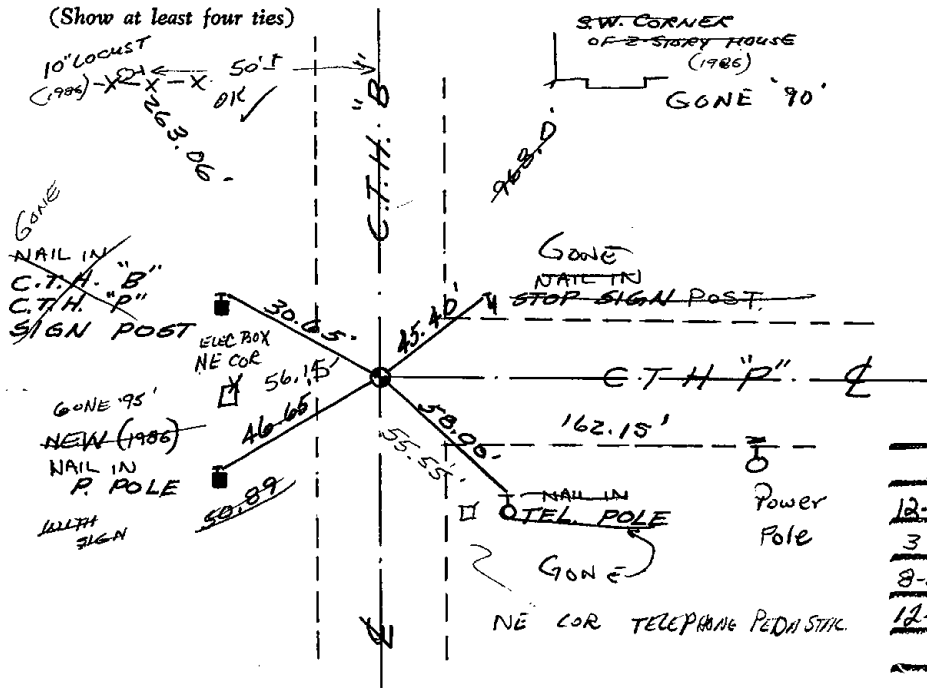
Frederic W. Zietlow

Registered Land Surveyor

DATE: JULY 31, 1975

TIE SKETCH

(Show at least four ties)



MAINTENANCE RECORD

Date	Init.	Remarks
12-11-81	SK-DW	CORNER O.K.
3-17-86	GR-SS	2 NEW TIES
8-25-86	SS	3 " "
12-18-01	JG	TIE OK, BOTH SHEETS