

## PUBLIC LAND SURVEY MONUMENT RECORD

TYPE OF MONUMENT: HARRISON (BROKEN-TOP)  
 ADAMS COUNTY COORDINATES, NAD 83 (2007)

N. 114004.328

E. 578403.338

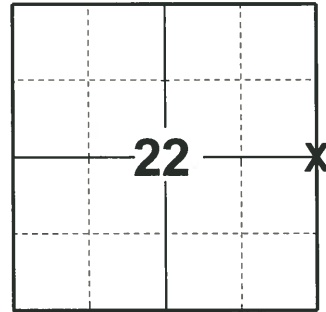
ELEVATION-      DATUM     

FIELD WORK DATE: 04/22/2020

### BASIS FOR MONUMENT LOCATION

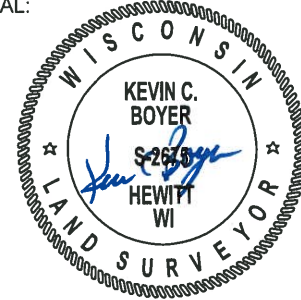
1976 - PLS 1191 RESEARCHED COUNTY RECORDS FOUND STONE BEING RECORDED IN VOL. 2 PG. 15 BY M.C. SMITH, JULY 22, 1915, DUG AND TOOK SOUNDING FOR STONE WHICH COULD NOT FIND. CORNER LOCATION COMPUTED IN FROM FIELD WORK. EDM TRAVERSE.

2020 - PLS 2675 FOUND HARRISON (BROKEN-TOP) 3"± BELOW THE ROAD SURFACE AND 2 TIES. THE MONUMENT AGREES WITH BOTH TIES. ACCEPTED THE HARRISON (BROKEN-TOP) AS THE CORNER LOCATION. SET 2 NEW TIES AND MEASURED TO THE EXISTING TIES.



LOCATION  
 (INDICATE CORNER BY "X")

SEAL:



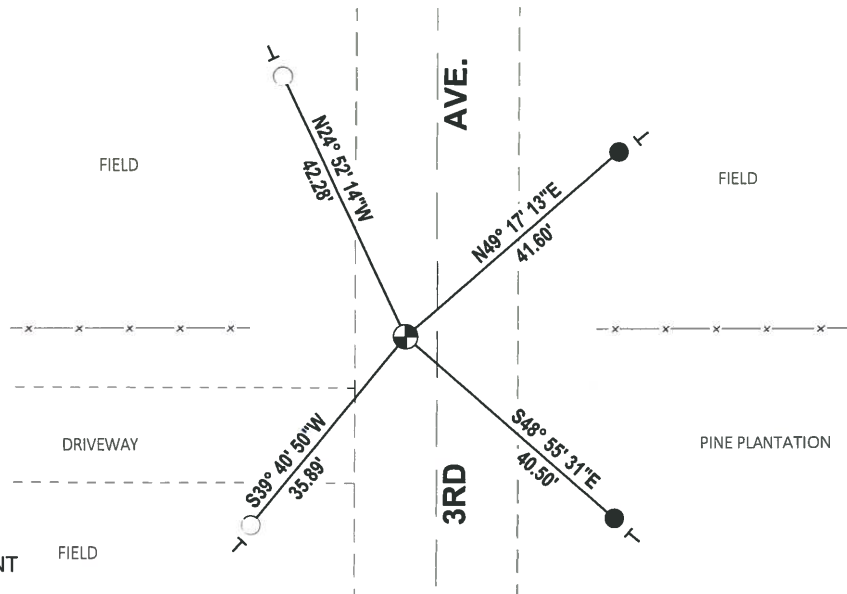
DATA SHOWN HERE ON THIS TIE SHEET IS CORRECT AND COMPLETE TO THE BEST OF MY KNOWLEDGE AND BELIEF.

PROFESSIONAL LAND SURVEYOR

DATE 5/28/2020

### - TIE SKETCH

NOTE: THE CORNER LANDS 4.3'± WEST OF 3RD AVE. CENTERLINE.



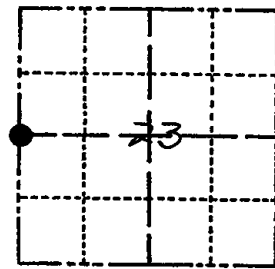
- SET 3/4" x 18" IRON REBAR, 1.50#/FT
- FOUND 3/4" IRON ROD
- ⊕ FOUND HARRISON (BROKEN-TOP) MONUMENT
- └ VINYL "T" POST

# ADAMS COUNTY

## Survey Monument Record

TYPE OF MONUMENT: HARRISON  
 STATE PLANE COORDINATES: N \_\_\_\_\_  
 E \_\_\_\_\_  
 ELEVATION — M.S.L. DATUM: \_\_\_\_\_  
 THETA ANGLE: \_\_\_\_\_  
 FIELD BOOK: 510 PAGE 44 & 45

CORNER NO. 969  
 SECTION 23  
 TOWN 14 N  
 RANGE 7 E



LOCATION  
(Indicated by 'X')

SEAL:



### BASIS FOR MONUMENT LOCATION

(Use reverse side if necessary)

Show info such as: History of corner, with reference to Vol. and pg, dates, surveyor; exact description of monument replaced; if location computed, by taped or EDM traverse; landowner remarks, etc.

*Researched county records found stone being recorded in Vol. 2 Pg. 15 by M.C. Smith, July 22, 1915, dug and took soundings for stone which I could not find. Corner location computed in from field work. E.D.M. traverse (SEE ATTACHED K. CALSON 7-27-93)*

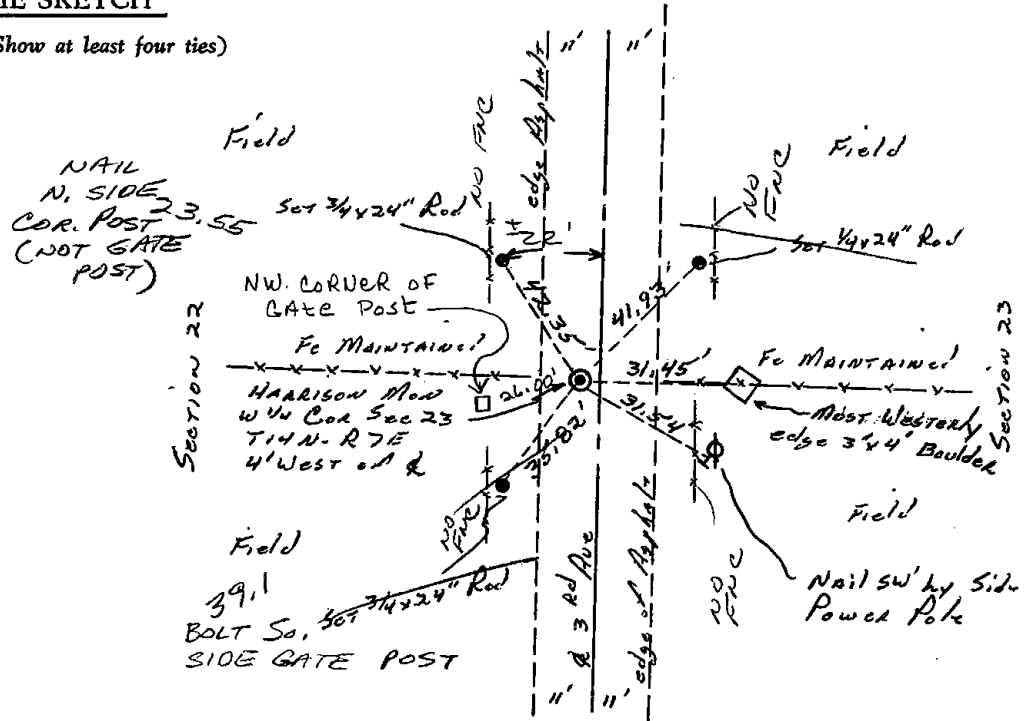
CERTIFIED CORRECT:

*Allen D. Rohde*  
 Registered Land Surveyor

DATE: 5-25-76

### TIE SKETCH

(Show at least four ties)



### MAINTENANCE RECORD

Date	Init.	Remarks
12-8-81	SK-DW	
2-12-86	GR-SS	OK
12-19-90	KZ-JG	OK
11/28/95	JG-SS	OK
6-11-01	JG	OK
		OK

