

24 SECTION 14 TOWN 06 RANGE

ADAMS COUNTY

COUNTY CORNER NO: 93
 ROMPORTOL ID: 41406240000

PUBLIC LAND SURVEY MONUMENT RECORD

TYPE OF MONUMENT: HARRISON
 ADAMS COUNTY COORDINATES, NAD 83 (2007)

N. 111445.653

E. 557518.970

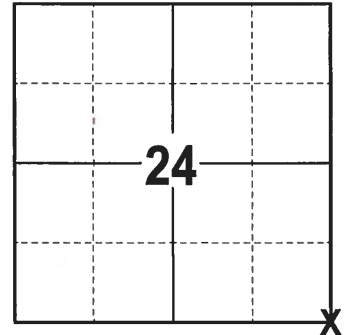
ELEVATION- DATUM

FIELD WORK DATE: 10/04/2017

BASIS FOR MONUMENT LOCATION

1975 - PLS 922 FOUND A BRICK BURIED WITH STONES PILED AROUND THE SAME. CHECKED COUNTY SURVEY RECORDS AND NO RESURVEYS WERE ON FILE. POSITION FIT TRANSIT-TAPE TRAVERSE OF THE SECTION GOOD. SET A 30" HARRISON AT THE CORNER LOCATION AND TIED OUT.

2017 - PLS 2994 FOUND A HARRISON MONUMENT FLUSH WITH THE GROUND AND 2 TIES. THE MONUMENT AGREES WITH THE EXISTING TIES. ACCEPTED THE HARRISON MONUMENT AS THE CORNER LOCATION. SET 2 NEW TIES AND MEASURED THE TIES AND ADJACENT SECTION CORNERS.



LOCATION
 (INDICATE CORNER BY "X")

SEAL:



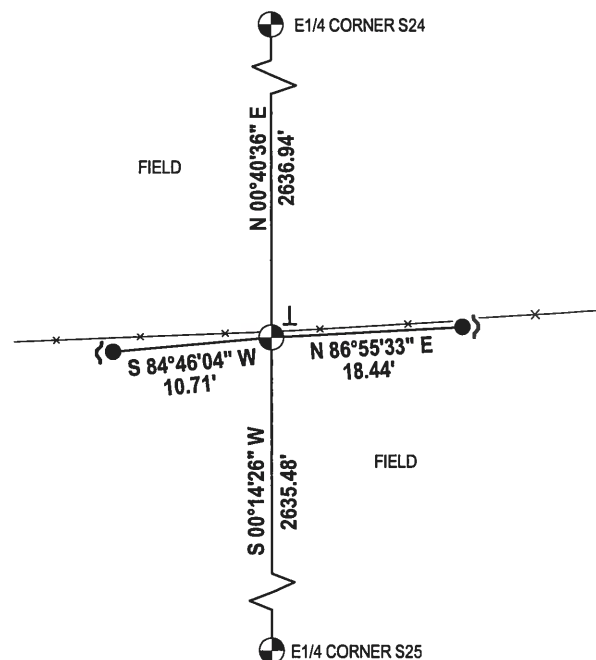
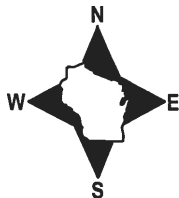
DATA SHOWN HERE ON THIS TIE SHEET IS CORRECT AND COMPLETE TO THE BEST OF MY KNOWLEDGE AND BELIEF.

PROFESSIONAL LAND SURVEYOR

DATE 11-15-17

- TIE SKETCH -

NOTE: THE CORNER FALLS 0.5'± SOUTH OF THE FENCE LINE.



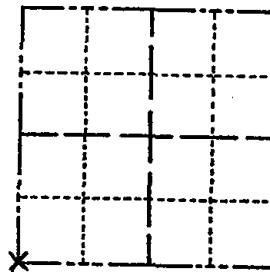
- 3/4" x 18" IRON REBAR SET, 1.50#/FT
- ⊕ HARRISON FOUND
- ~ STEEL FENCE POST
- | VINYL "T" POST

ADAMS COUNTY

Survey Monument Record

TYPE OF MONUMENT: 30" HARRISON
 STATE PLANE COORDINATES: N _____
 E _____
 ELEVATION — M.S.L. DATUM: _____
 THETA ANGLE: _____
 FIELD BOOK: _____ PAGE _____

CORNER NO. 761 (81)
 SECTION 19
 TOWN 14-N
 RANGE 7-E



LOCATION
 (Indicated by 'X')

SEAL:

BASIS FOR MONUMENT LOCATION

(Use reverse side if necessary)

Show info such as: History of corner, with reference to Vol. and pg. dates, surveyor; exact description of monument replaced; if location computed, by taped or EDM traverse; landowner remarks, etc.

FOUND BRICK BURIED WITH STONES PILED AROUND SAME. CHECKED CO. SURVEY RECORDS & NO RESURVEYS WERE ON FILE. FIT TRANSIT-TAPE TRAVERSE OF SECTION GOOD.

CORNER O.K. 10-29-76 GR-DCH
 " " 2-12-86 GR-SS

CORNER OK 8-5-91 - JG
 OK 4-25-96 JG-SS
 OK, 12-19-01 JG-JS

1-NEW TIE, 1-19-06 - JG
 OK 1-5-12 MS



CERTIFIED CORRECT:

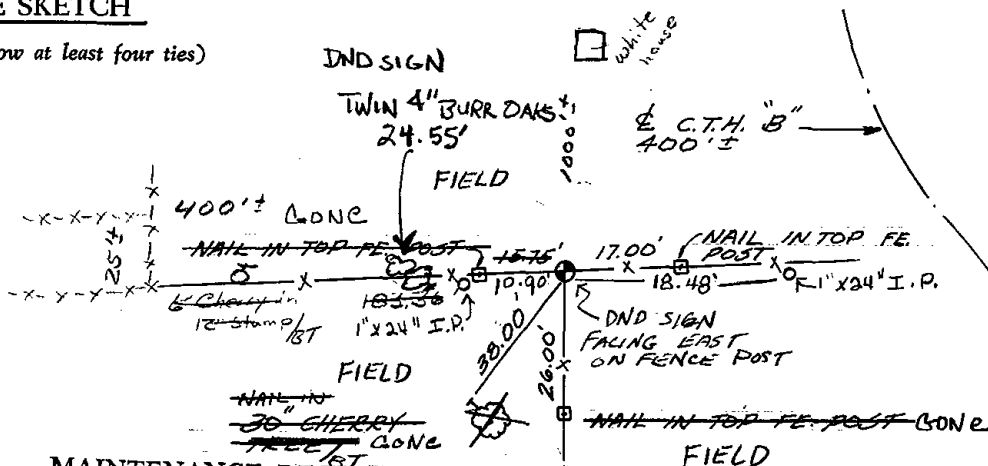
Frederic W. Zietlow

Registered Land Surveyor

DATE: JULY 31, 1975

TIE SKETCH

(Show at least four ties)



MAINTENANCE RECORD

Date	Init.	Remarks
12-14-81	SK-DW	CORNER O.K.
1-19-06	JG	1-NEW TIE