

19
SECTION

14
TOWN

07
RANGE

ADAMS COUNTY

COUNTY CORNER NO: 83
ROMPORTOL ID: 41407190000

PUBLIC LAND SURVEY MONUMENT RECORD

TYPE OF MONUMENT: HARRISON
ADAMS COUNTY COORDINATES, NAD 83 (2007)

N. 111509.950

E. 562528.651

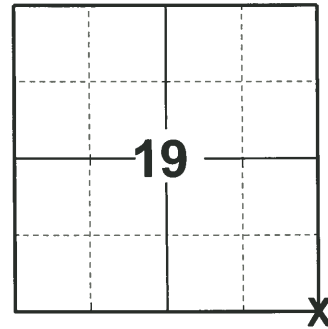
ELEVATION- DATUM

FIELD WORK DATE: 04/27/2020

BASIS FOR MONUMENT LOCATION

1975 - PLS 922 USED CORNER FENCE POST FOR SECTION CORNER PER CONVERSATIONS WITH ADJOINING FARMERS. FIT TRANSIT TAPE TRAVERSE OF SECTION GOOD. CHECKED COUNTY SURVEY RECORDS AND NO RESURVEYS WERE ON FILE.

2020 - PLS 2675 FOUND HARRISON AT FENCE INTERSECTION FLUSH WITH THE GROUND AND 3 WITNESSES. THE MONUMENT AGREES WITH ALL 3 WITNESSES. ACCEPTED THE HARRISON AS THE CORNER LOCATION. SET 4 NEW TIES AND MEASURED TO THE EXISTING WITNESSES.



LOCATION
(INDICATE CORNER BY "X")

SEAL:

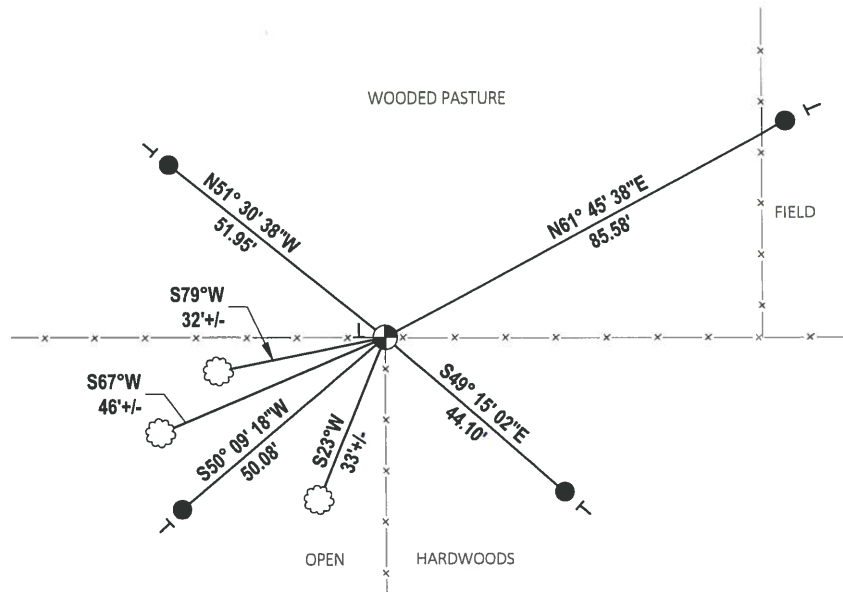
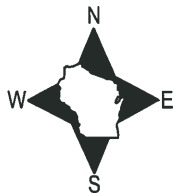


DATA SHOWN HERE ON THIS TIE SHEET IS CORRECT AND COMPLETE TO THE BEST OF MY KNOWLEDGE AND BELIEF.

PROFESSIONAL LAND SURVEYOR

DATE 5/28/2020

- TIE SKETCH

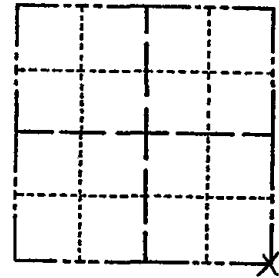


ADAMS COUNTY

Survey Monument Record

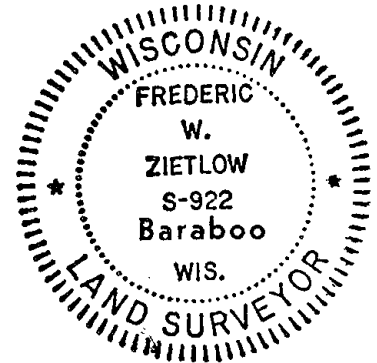
TYPE OF MONUMENT: 30" HARRISON
STATE PLANE COORDINATES: N _____
E _____
ELEVATION — M.S.L. DATUM: _____
THETA ANGLE: _____
FIELD BOOK: _____ PAGE _____

CORNER NO. 759 (83)
SECTION 19
TOWN 14 N
RANGE 7 E



LOCATION
(Indicated by 'X')

SEAL:



BASIS FOR MONUMENT LOCATION

(Use reverse side if necessary)

Show info such as: History of corner, with reference to Vol. and pg, dates, surveyor; exact description of monument replaced; if location computed, by taped or EDM traverse; landowner remarks, etc.

USED CORNER FENCE POST FOR SECTION CORNER PER CONVERSATIONS WITH ADJOINING FARMERS FIT TRANSIT TAPE TRAVERSE OF SECTION GOOD CHECKED COUNTY SURVEY RECORDS AND NO RESURVEYS WERE ON FILE.

CORNER O.K. 10-28-76 GR-DCH

NEW NAILS, NEW DISTANCES, 12-19-01, JG-JS
CORNER O.K.
1-6-08 E, 1-NEW, 1-24-06 - JG
OK 1-5-12 MS

CERTIFIED CORRECT:

Frederic W. Zietlow

Registered Land Surveyor

DATE: JULY 31, 1975

TIE SKETCH

(Show at least four ties)

