

20
SECTION

14
TOWN

07
RANGE

ADAMS COUNTY

COUNTY CORNER NO: 84

ROMPORTOL ID: 41407200020

PUBLIC LAND SURVEY MONUMENT RECORD

TYPE OF MONUMENT: HARRISON
ADAMS COUNTY COORDINATES, NAD 83 (2007)

N. 111513.693

E. 565179.039

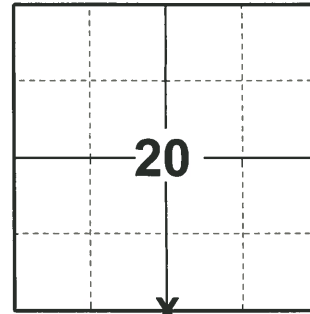
ELEVATION- DATUM

FIELD WORK DATE: 04/20/2020

BASIS FOR MONUMENT LOCATION

1980 - PLS 1478 FOUND 24" LONG BLUE GRANITE STONE LYING ON SIDE AT FENCE CORNER. EXCAVATION EXPOSED THE LOCATION OF THE BASE OF STONE. VOL. 2, PAGE 57 OF ADAMS COUNTY SURVEY RECORDS INDICATES STONE SET BY M.C. SMITH ON MARCH 31, 1921. REMONUMENTED LOCATION WITH HARRISON MONUMENT. STONE WAS REMOVED TO MID-STATE'S FRIENDSHIP OFFICE.

2020 - PLS 2675 FOUND HARRISON FLUSH WITH THE GROUND AND 1 WITNESS TREE. THE MONUMENT AGREES WITH THE WITNESS TREE. ACCEPTED THE HARRISON AS THE CORNER LOCATION. SET 4 NEW TIES AND MEASURED TO THE EXISTING WITNESS TREE.



LOCATION
(INDICATE CORNER BY "X")

SEAL:

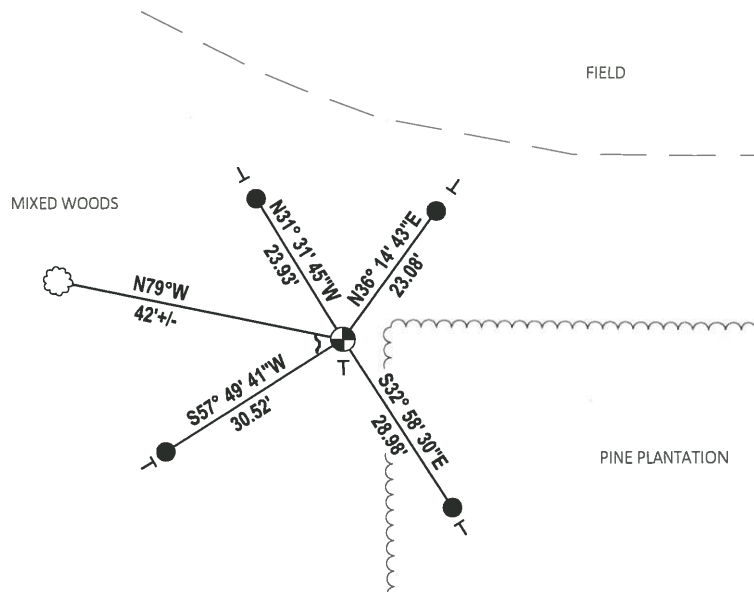
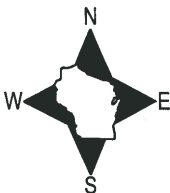


DATA SHOWN HERE ON THIS TIE SHEET IS CORRECT AND COMPLETE TO THE BEST OF MY KNOWLEDGE AND BELIEF.

PROFESSIONAL LAND SURVEYOR

DATE 5/28/2020

- TIE SKETCH



- SET 3/4" x 18" IRON REBAR, 1.50#/FT
- ⊕ FOUND HARRISON MONUMENT
- ┌ STEEL FENCE POST
- └ VINYL "T" POST
- ☁ WITNESS TREE

Government Land Corner Certificate

ADAMS County

TYPE OF MONUMENT: HARRISON

STATE PLANE COORDINATES: N _____
E _____

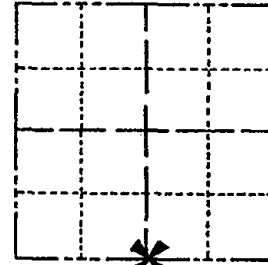
ELEVATION — M.S.L. DATUM: _____

THETA ANGLE: _____

FIELD BOOK: A-F 2 PAGE 101

DRAWN BY: S. SORENSEN

CORNER NO. 84
SECTION 20
TOWN 14
RANGE 7



LOCATION
(Indicated by 'X')

BASIS FOR MONUMENT LOCATION

Show info such as: History of corner, with reference to Vol. and pg., dates, surveyor; exact description of monument replaced; if location computed, by taped or EDM traverse; landowner remarks, etc. (Use reverse side if necessary)

Found 24" long Blue Granite stone lying on side at fence corner. Excavation exposed the location of base of stone. Vol. 2, page 57 of Adams County Survey Records indicates stone set by M. G. Smith on March 31, 1921. Remonumented location with Harrison monument. Stone was removed to Mid-State's Friendship office.

SEAL:



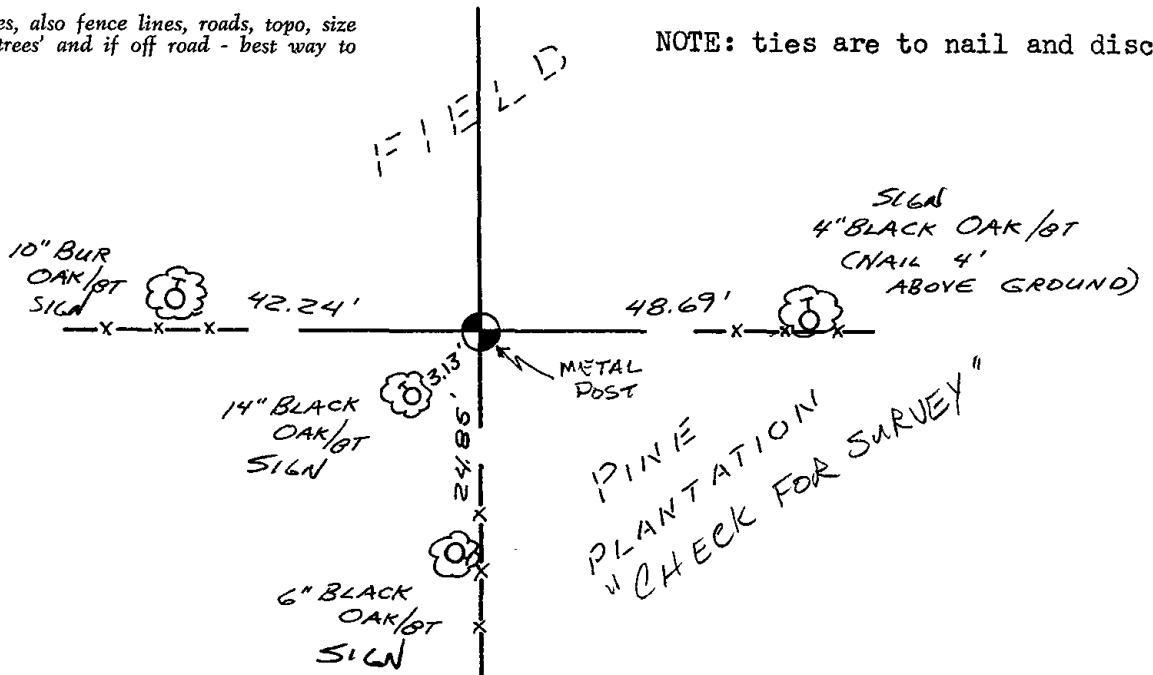
DATA SHOWN HERE ON
CERTIFIED CORRECT:

Gregory P. Rhinehart
Registered Land Surveyor

DATE: 10-24-80

TIE SKETCH

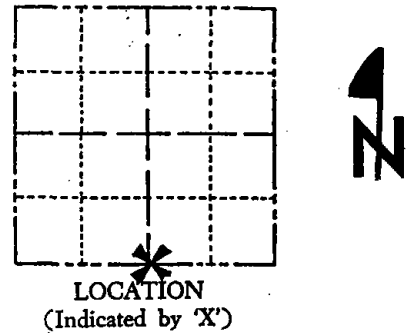
Show at least four ties, also fence lines, roads, topo, size and type of witness trees' and if off road - best way to arrive at corner.



Government Land Corner Certificate

CORNER NO. 84
 SECTION 20
 TOWN 14
 RANGE 7

ADAMS County
 TYPE OF MONUMENT: HARRISON
 STATE PLANE COORDINATES: N _____
 E _____
 ELEVATION — M.S.L. DATUM: _____
 THETA ANGLE: _____
 FIELD BOOK: A-F 2 PAGE 101
 DRAWN BY: S. SORENSEN



SEAL:



DATA SHOWN HERE ON
 CERTIFIED CORRECT:

Gregory P. Rhinehart
 Registered Land Surveyor

DATE: 10-24-80

BASIS FOR MONUMENT LOCATION

Show info such as: History of corner, with reference to Vol. and pg., dates, surveyor; exact description of monument replaced; if location computed, by taped or EDM traverse; landowner remarks, etc. (Use reverse side if necessary)

Found 24" long Blue Granite stone lying on side at fence corner. Excavation exposed the location of base of stone. Vol. 2, page 57 of Adams County Survey Records indicates stone set by M. C. Smith on March 31, 1921. Remonumented location with Harrison monument. Stone was removed to Mid-State's Friendship office.

TIE SKETCH

Show at least four ties, also fence lines, roads, topo, size and type of witness trees' and if off road - best way to arrive at corner.

NOTE: ties are to nail and disc

