

21
SECTION

14
TOWN

07
RANGE

ADAMS COUNTY

COUNTY CORNER NO: 87

ROMPORTOL ID: 41407210000

PUBLIC LAND SURVEY MONUMENT RECORD

TYPE OF MONUMENT: HARRISON
ADAMS COUNTY COORDINATES, NAD 83 (2007)

N. 111433.951

E. 573140.969

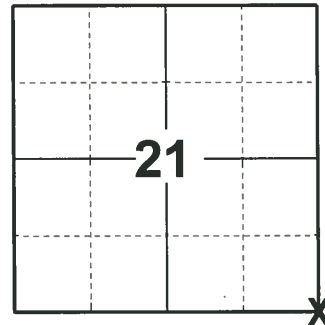
ELEVATION- _____ DATUM _____

FIELD WORK DATE: 04/23/2020

BASIS FOR MONUMENT LOCATION

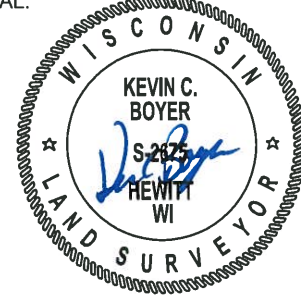
1980 - PLS 1478 FOUND 3/4"X26" IRON PIPE AT RECORDED DISTANCE FROM STUMP OF ORIGINAL BEARING TREE N57°W, 83 LINKS. EXCAVATION BY HAND REVEALED NO OTHER EVIDENCE OF MONUMENTATION. IRON PIPE WAS REMONUMENTED WITH HARRISON MONUMENT.

2020 - PLS 2675 FOUND HARRISON 6"± BELOW THE ROAD SHOULDER AND 1 WITNESS. THE MONUMENT AGREES WITH THE WITNESS. ACCEPTED THE HARRISON AS THE CORNER LOCATION. SET 4 NEW TIES AND MEASURED TO THE EXISTING WITNESS.



LOCATION
(INDICATE CORNER BY "X")

SEAL:

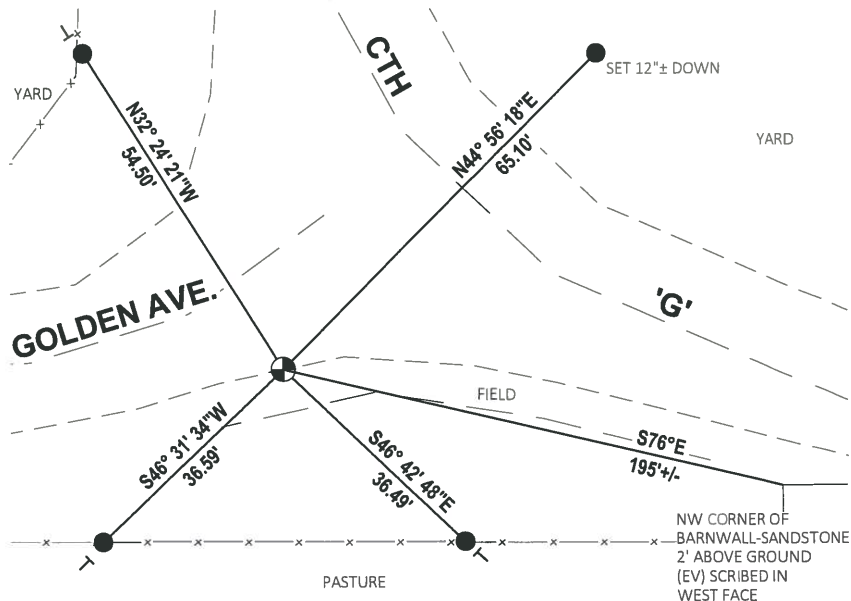


DATA SHOWN HERE ON THIS TIE SHEET IS CORRECT AND COMPLETE TO THE BEST OF MY KNOWLEDGE AND BELIEF.

PROFESSIONAL LAND SURVEYOR

DATE 5/28/2020

- TIE SKETCH



- SET 3/4" x 18" IRON REBAR, 1.50#/FT
- ⊕ FOUND HARRISON MONUMENT
- VINYL "T" POST

Government Land Corner Certificate

ADAMS County

TYPE OF MONUMENT: HARRISON

STATE PLANE COORDINATES: N _____

E _____

ELEVATION — M.S.L. DATUM: _____

THETA ANGLE: _____

FIELD BOOK: A-F 2 PAGE 104

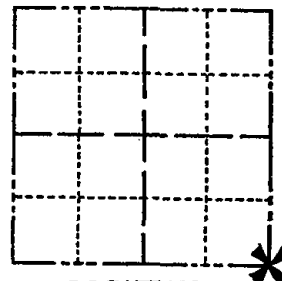
DRAWN BY: S. SORENSEN

CORNER NO. 87

SECTION 21

TOWN 14

RANGE 7



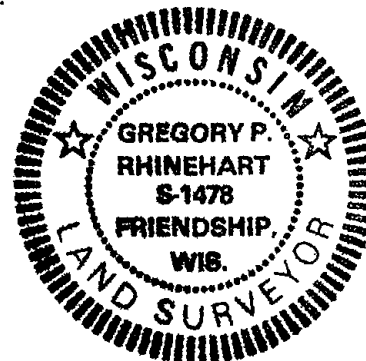
LOCATION
(Indicated by 'X')

BASIS FOR MONUMENT LOCATION

Show info such as: History of corner, with reference to Vol. and pg., dates, surveyor; exact description of monument replaced; if location computed, by taped or EDM traverse; landowner remarks, etc. (Use reverse side if necessary)

Found 3/4"x26" iron pipe at record distance from stump of original bearing tree N57 W, 83 links. Excavation by hand revealed no other evidence of monumentation. Iron pipe was remonumented with Harrison monument.

SEAL:



DATA SHOWN HERE ON
CERTIFIED CORRECT:

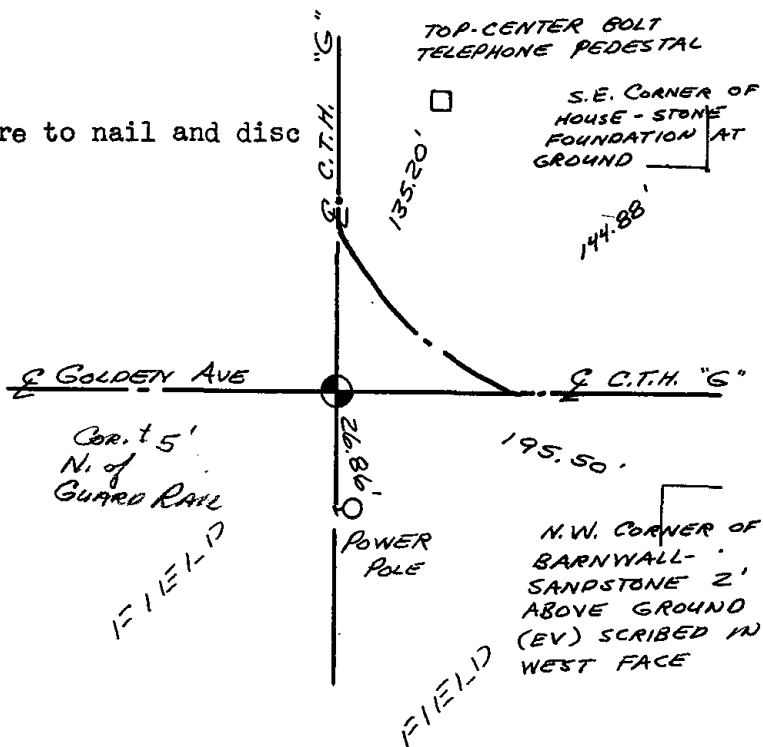
Gregory P. Rhinehart
Registered Land Surveyor

DATE: 10-24-80

TIE SKETCH

Show at least four ties, also fence lines, roads, topo, size and type of witness trees' and if off road - best way to arrive at corner.

NOTE: ties are to nail and disc



MAINTENANCE RECORD

Date	Init.	Remarks
12-7-81	SK+DN	Ties o.k Mon. Beeps
2-19-86	GL-SS	01*
12-19-90	KZ-JG	OK
12-1-95	SS	"
6-11-01	JG	OK
2-7-06	JG	OK
2-25-11	SS	OK