

22  
SECTION

14  
TOWN

07  
RANGE

# ADAMS COUNTY

COUNTY CORNER NO: 89

ROMPORTOL ID: 41407220000

## PUBLIC LAND SURVEY MONUMENT RECORD

TYPE OF MONUMENT: HARRISON (BROKEN-TOP)  
ADAMS COUNTY COORDINATES, NAD 83 (2007)

N. 111343.769

E. 578422.527

ELEVATION-          DATUM         

FIELD WORK DATE: 04/22/2020

### BASIS FOR MONUMENT LOCATION

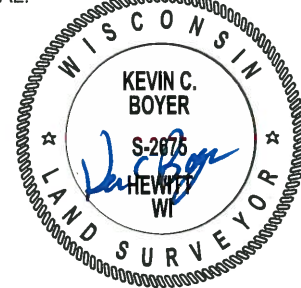
2008 - PLS 2021 AL ROHDE SET HARRISON MONUMENT AT LOCATION OF 1" AXLE SET BY M.C. SMITH IN VOL. 2 PG. 106. FOUND MONUMENT AND ONE TIE AND SET NEW TIES.

2020 - PLS 2675 FOUND HARRISON (BROKEN-TOP) 16"± BELOW THE ROAD SURFACE, 1 TIE, AND 2 WITNESSES. THE MONUMENT AGREES WITH THE TIE AND WITNESSES. ACCEPTED THE HARRISON (BROKEN-TOP) AS THE CORNER LOCATION. SET 3 NEW TIES AND MEASURED TO A FOUND PROPERTY IRON AND THE EXISTING TIE AND WITNESSES.



LOCATION  
(INDICATE CORNER BY "X")

SEAL:



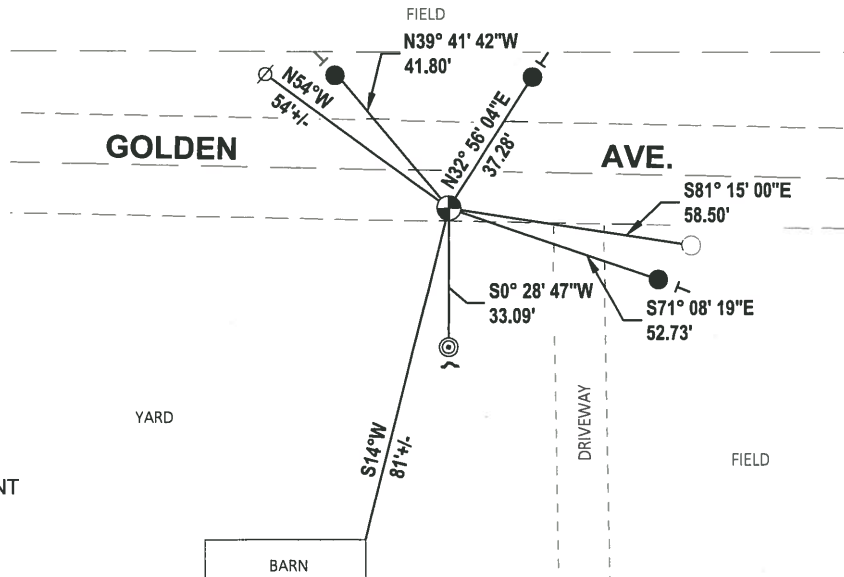
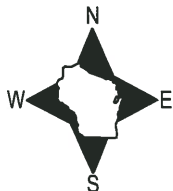
DATA SHOWN HERE ON THIS TIE SHEET IS CORRECT AND COMPLETE TO THE BEST OF MY KNOWLEDGE AND BELIEF.

PROFESSIONAL LAND SURVEYOR

DATE 5/28/2020

### - TIE SKETCH

NOTE: THE CORNER LANDS 9.2'± SOUTH OF GOLDEN AVE. CENTERLINE.



- SET 3/4" x 18" IRON REBAR, 1.50#/FT
- FOUND 3/4" IRON ROD
- ⊙ FOUND 2-3/8" O.D. IRON PIPE
- ⊕ FOUND HARRISON (BROKEN-TOP) MONUMENT
- ⊗ WITNESS POWER POLE
- ✓ STEEL FENCE POST
- ┊ VINYL "T" POST

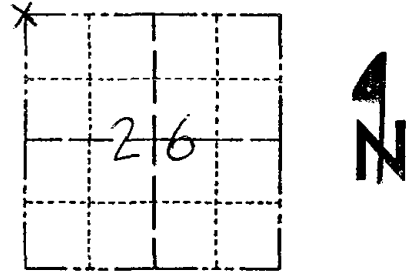
U.S. PUBLIC LAND SURVEY MONUMENT RECORD

ADAMS COUNTY

TYPE OF MONUMENT: Harrison monument  
 STATE PLANE COORDINATES: N \_\_\_\_\_  
 E \_\_\_\_\_

CORNER NO. 968  
 SECTION 26  
 TOWN 14N  
 RANGE 7E

ELEVATION — M.S.L. DATUM: \_\_\_\_\_  
 THETA ANGLE: \_\_\_\_\_  
 FIELD BOOK: \_\_\_\_\_ PAGE \_\_\_\_\_  
 DRAWN BY: \_\_\_\_\_



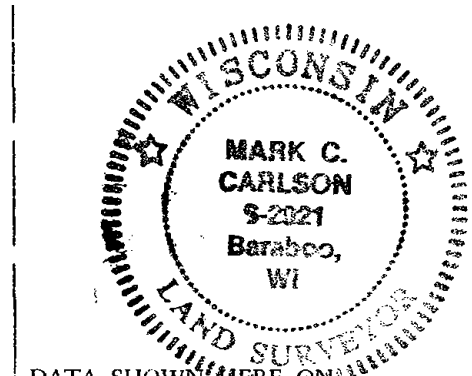
LOCATION  
(Indicated by 'X')

BASIS FOR MONUMENT LOCATION

Show info such as: History of corner, with reference to Vol. and pg., dates, surveyor; exact description of monument replaced; if location computed, by taped or EDM traverse; landowner remarks, etc. (Use reverse side if necessary) (in conformance with Section A-E 502 of the Wisconsin Administrative Code)

At Rohde set Harrison monument at location of 1" axle set by M. C. Smith in Vol. 2 P. 106. I found monument and one tie and set new ties,

SEAL:



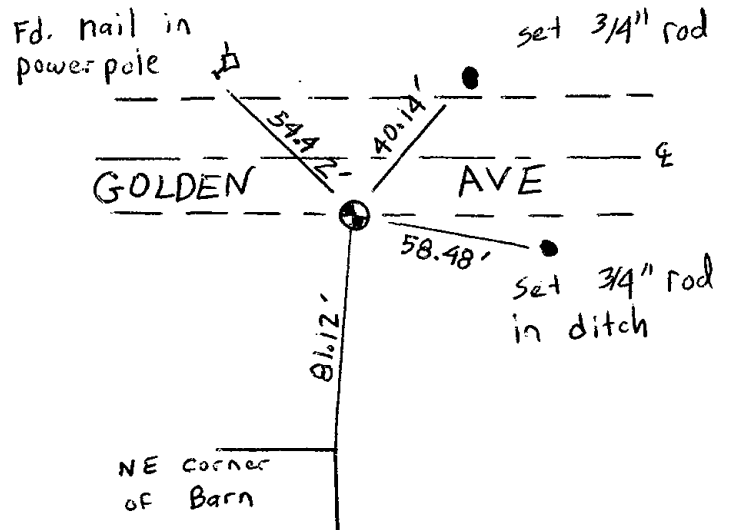
DATA SHOWN HEREON CERTIFIED CORRECT:

*Mark C. Carlson*  
 Registered Land Surveyor

DATE: 4-10-08

TIE SKETCH

Show at least four ties, also fence lines, roads, topo, size and type of witness trees and if off road - best way to arrive at corner.



MAINTENANCE RECORD

Date	Init.	Remarks
02-25-11	SS	OK