

23
SECTION

14
TOWN

07
RANGE

ADAMS COUNTY

COUNTY CORNER NO: 90

ROMPORTOL ID: 41407230020

PUBLIC LAND SURVEY MONUMENT RECORD

TYPE OF MONUMENT: HARRISON (BROKEN-TOP)

ADAMS COUNTY COORDINATES, NAD 83 (2007)

N. 111357.526

E. 581034.447

ELEVATION- _____ DATUM _____

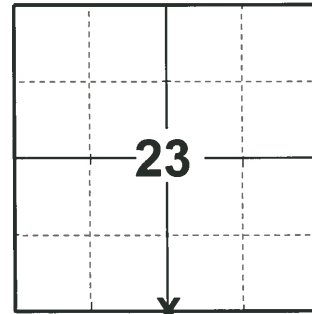
FIELD WORK DATE: 04/21/2020

BASIS FOR MONUMENT LOCATION

1976 - PLS 1191 SET HARRISON MONUMENT EQUIDISTANT AND ON LINE BETWEEN SW CORNER AND SE CORNER OF SECTION 23 T14N R7E. REFERENCE VOL. 2 PG 165, 166 MADE APRIL 15-18, 1895 BY ARTHUR BARRETT, COUNTY SURVEYOR. FOUND NO MONUMENT AT CORNER OR RECORDED THEREOF. EDM TRAVERSE.

2008 - PLS 2021 FOUND MONUMENT AND 2 TIES, TOP 9" OF MONUMENT IS BROKEN OFF.

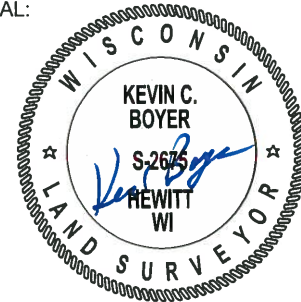
2020 - PLS 2675 FOUND HARRISON (BROKEN-TOP) 16"± BELOW THE GROUND AND 2 TIES. THE MONUMENT AGREES WITH BOTH TIES. ACCEPTED THE HARRISON (BROKEN-TOP) AS THE CORNER LOCATION. SET 2 NEW TIES AND MEASURED TO 3 FOUND PROPERTY IRONS AND THE 2 EXISTING TIES.



LOCATION

(INDICATE CORNER BY "X")

SEAL:



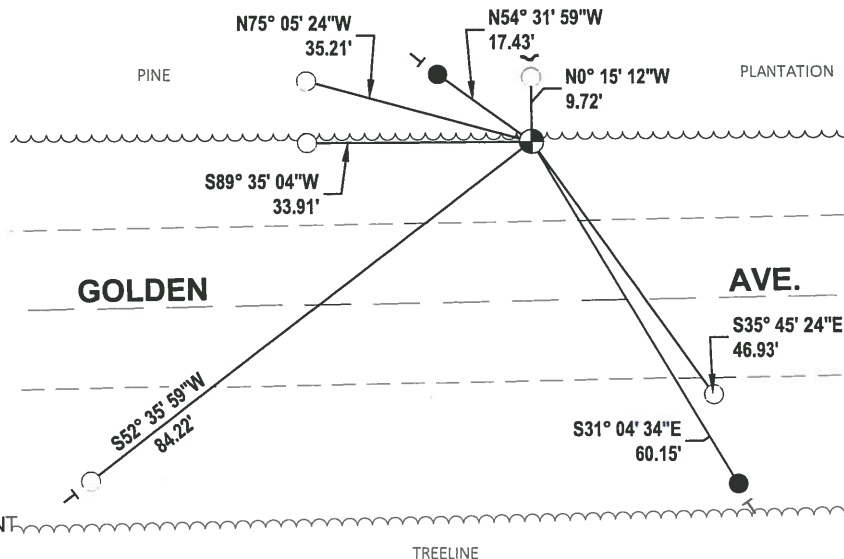
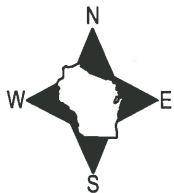
DATA SHOWN HERE ON THIS TIE SHEET IS CORRECT AND COMPLETE TO THE BEST OF MY KNOWLEDGE AND BELIEF.

PROFESSIONAL LAND SURVEYOR

DATE 5/28/2020

- TIE SKETCH

NOTE: THE CORNER LANDS 24'± NORTH OF GOLDEN AVE. CENTERLINE.



- SET 3/4" x 18" IRON REBAR, 1.50#/FT
- FOUND 3/4" IRON ROD
- ⊕ FOUND HARRISON (BROKEN-TOP) MONUMENT
- ┌ STEEL FENCE POST
- └ VINYL "T" POST

U.S. PUBLIC LAND SURVEY MONUMENT RECORD

ADAMS COUNTY

TYPE OF MONUMENT: Harrison monument top broken off

STATE PLANE COORDINATES: N _____
E _____

ELEVATION — M.S.L. DATUM: _____

THETA ANGLE: _____

FIELD BOOK: _____ PAGE _____

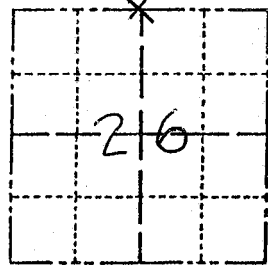
DRAWN BY: _____

CORNER NO. _____

SECTION 26

TOWN 14N

RANGE 7E



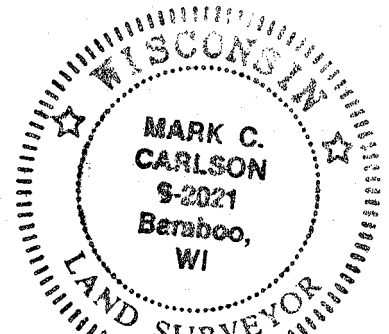
LOCATION
(Indicated by 'X')

BASIS FOR MONUMENT LOCATION

Show info such as: History of corner, with reference to Vol. and pg., dates, surveyor; exact description of monument replaced; if location computed, by taped or EDM traverse; landowner remarks, etc. (Use reverse side if necessary) (in conformance with Section A-E 502 of the Wisconsin Administrative Code)

I found monument set by Al Rohde
5-25-76 and two ties,
Top 9" of monument is broken off.

SEAL:



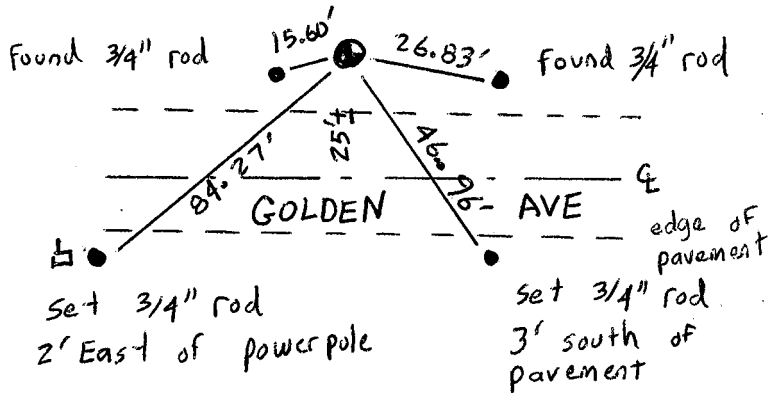
DATA SHOWN HERE ON
CERTIFIED CORRECT.

Mark C Carlson
Registered Land Surveyor

DATE: 4-10-08

TIE SKETCH

Show at least four ties, also fence lines, roads, topo, size and type of witness trees' and if off road - best way to arrive at corner.



MAINTENANCE RECORD

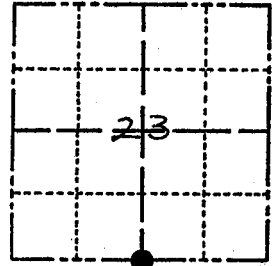
Date	Init.	Remarks
2-25-11	SS	OK

ADAMS COUNTY

Survey Monument Record

TYPE OF MONUMENT: Harrison
STATE PLANE COORDINATES: N _____
E _____
ELEVATION — M.S.L. DATUM: _____
THETA ANGLE: _____
FIELD BOOK: 510 PAGE 44 & 45

CORNER NO. 967
SECTION 23
TOWN 14N
RANGE 7E



LOCATION
(Indicated by 'X')

BASIS FOR MONUMENT LOCATION

(Use reverse side if necessary)

Show info such as: History of corner, with reference to Vol. and pg. dates, surveyor; exact description of monument replaced; if location computed, by taped or EDM traverse; landowner remarks, etc.

SEAL:

Set HARRISON Monument equidistant
and on line between the SW. cor and the
SE. Cor. Sec. 23, T.14N.-R7E. Reference
Vol. 2, Pgs 165 & 166 made April 15-18, 1895
by ARTHUR BARRETT, Co. Surveyor.
Found no Monument at Corner or Record
thereof. E.D.M. TRAVERSE



SEE CROWMAN UPDATE '88
TIES OR MON. BROKEN
PLACED STEEL POST/SIGN @ COR. 3-29-02 JG-SS
OK, 1-26-06, JG-SS

CERTIFIED CORRECT:

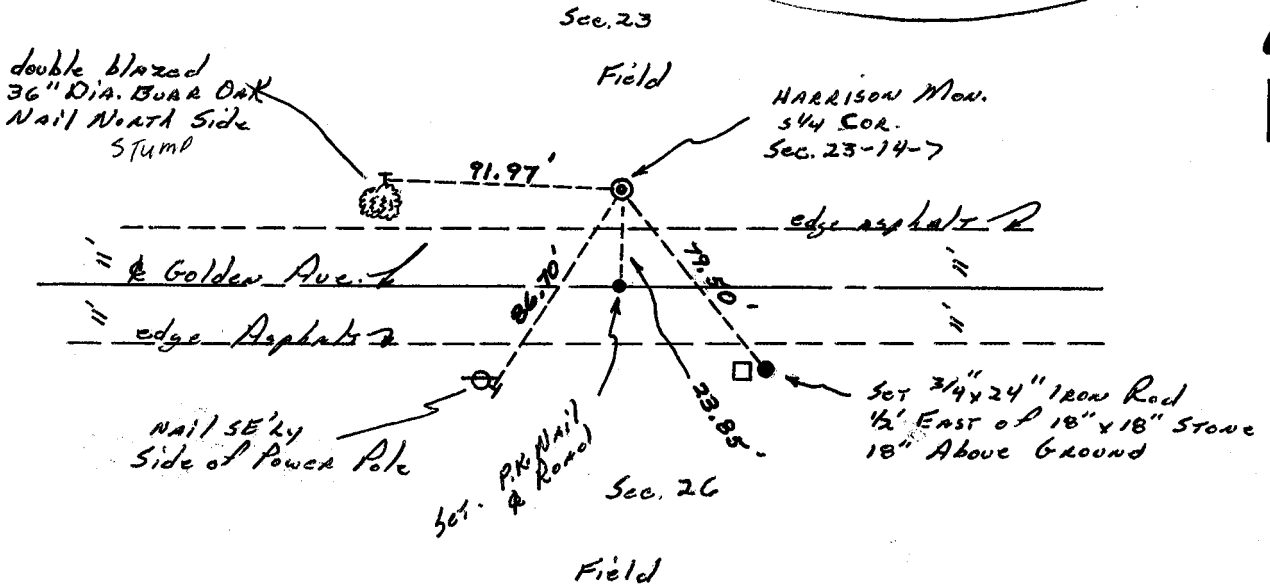
Registered Land Surveyor

DATE: 5-25-76

TIE SKETCH

(Show at least four ties)

SEE UPDATE 4-10-08
MARK CARLSON



MAINTENANCE RECORD

Date	Init.	Remarks
12-8-81	SK-DW	Ties OK MON. BROKE
2-12-86	GR-SS	" "
12-19-90	KZ-JG	GROTHMAN TIES ALL OK
11/29/95	SG-SS	OK

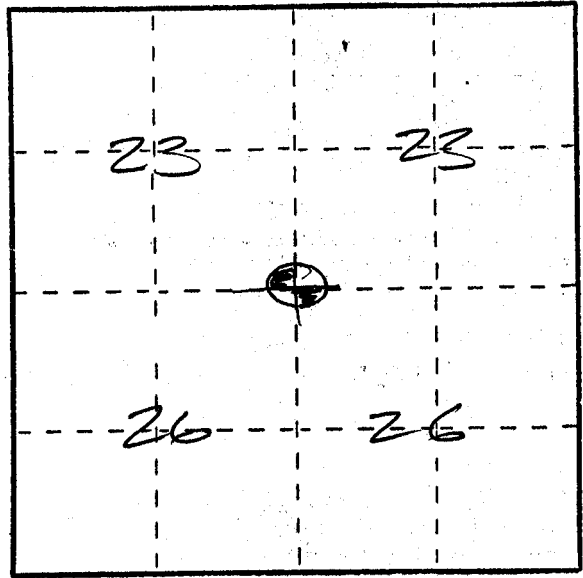
U. S. PUBLIC LAND SURVEY MONUMENT RECORD

ADAMS COLUMBIA COUNTY

INSTRUCTIONS: This record shall show the location of the corner and shall include all of the following nine elements (a through i).

- (a) Identify the corner by reference to the U.S. public land survey system.
O = Corner monument restored.

1/4 CORNER OF SECTION
23, T14N R7E TOWN OF
NEW HAVEN ADAMS Co.
WISCONSIN

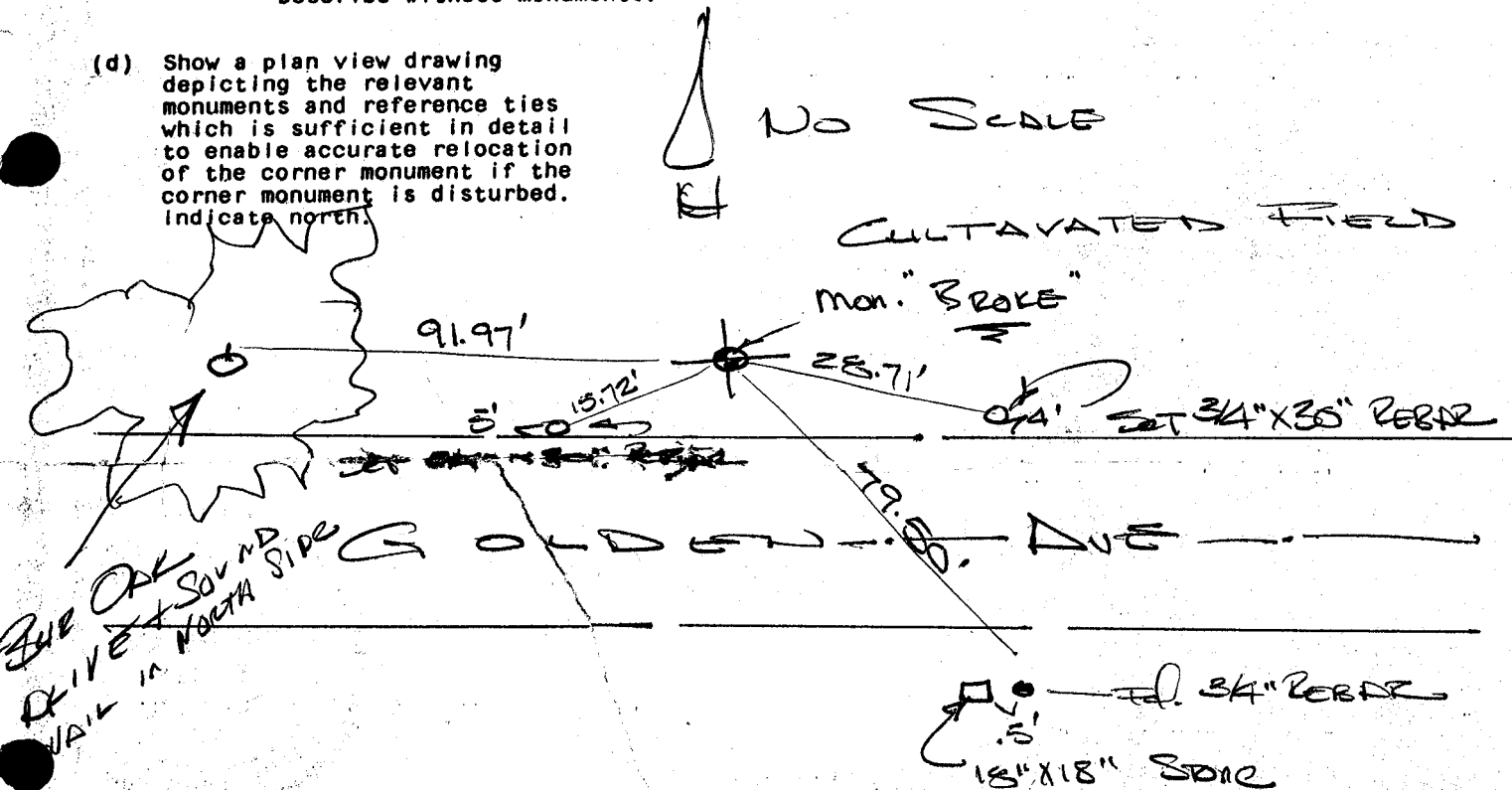


- (b) Describe any record evidence, monument evidence, occupational evidence, testimonial evidence or any other material evidence you considered, and whether the monument was found or placed.

FOUND HARRISON MON. AS SET BY ALLEN D. ROWE
5-25-76. TOP 9" "BROKE OFF", LOWER PART INTACT.
NOW ABOUT 1' BELOW GROUND SURFACE.

- (c) In the plan view drawing below, provide reference ties to at least 4 witness monuments, or, if the location is within a municipality, to at least 2 witness monuments. (Witness monuments shall be made of concrete, natural stone, iron or other equally durable material.) Describe witness monuments.

- (d) Show a plan view drawing depicting the relevant monuments and reference ties which is sufficient in detail to enable accurate relocation of the corner monument if the corner monument is disturbed. Indicate north.



(e) Describe any material discrepancy between the location of the corner as restored or reestablished and the location of that corner as previously restored or reestablished by distance and direction. Show the discrepancy on the plan view drawing under (d), above. Show the distances between the corner as previously restored or reestablished and (1) the corner as restored or reestablished, and (2) to at least 2 of the witness monuments shown on the drawing in (d), above.

NONE

(f) Was the corner restored through acceptance of (1) an obliterated evidence location, or, (2) a found perpetuated location?

PERPETUATED LOCATION

(g&h) Was the corner reestablished through lost corner proportionate methods? If so, show the method, including the directions and distances to other public land survey corners used as evidence or used for proportioning in determining the corner location?

NO

(i) JAMES R. GROTHMAN
(type or print name) certify that the corner location shown on this record was determined by me or under my direction and control and that this U.S. Public Land Survey Monument Record is correct and complete to the best of my knowledge and belief.

Signature

Date

James R. Grothman 1/3/88

Affix Land Surveyor Seal

