

23
SECTION

14
TOWN

07
RANGE

ADAMS COUNTY

COUNTY CORNER NO: 91

ROMPORTOL ID: 41407230000

PUBLIC LAND SURVEY MONUMENT RECORD

TYPE OF MONUMENT: HARRISON
ADAMS COUNTY COORDINATES, NAD 83 (2007)

N. 111371.876

E. 583646.385

ELEVATION- - - - - DATUM - - - - -

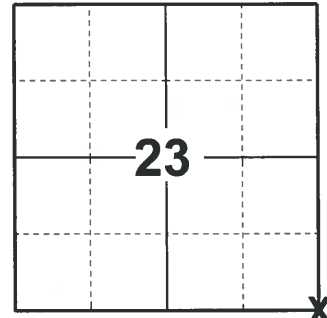
FIELD WORK DATE: 04/21/2020

BASIS FOR MONUMENT LOCATION

1976 - PLS 1191 FOUND 1"X30" AXLE 5" BELOW SURFACE OF ROAD SET BESIDE STONE. STONE RECORDED IN VOL. 2, PG 68, APRIL 12, 1920 BY M.C. SMITH COUNTY SURVEYOR. SET HARRISON MONUMENT AT LOCATION OF STONE. EDM TRAVERSE.

2008 - PLS 2021 AL ROHDE SET HARRISON MONUMENT AT LOCATION OF FOUND STONE AND AXLE SET BY M.C. SMITH. PLS 2021 FOUND HARRISON MONUMENT AND 3 TIES, SET 1 NEW TIE.

2020 - PLS 2675 FOUND HARRISON 12"± BELOW THE ROAD SURFACE AND 1 TIE. THE MONUMENT AGREES WITH THE EXISTING TIE. ACCEPTED THE HARRISON AS THE CORNER LOCATION. SET 4 NEW TIES AND MEASURED TO THE EXISTING TIE.



LOCATION
(INDICATE CORNER BY "X")

SEAL:



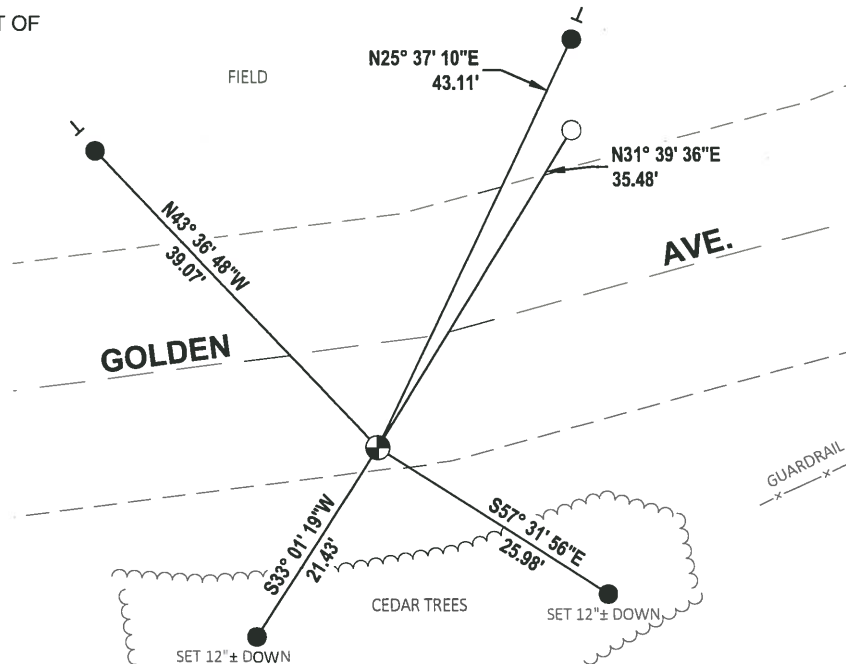
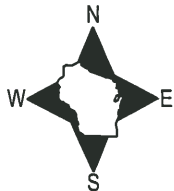
DATA SHOWN HERE ON THIS TIE SHEET IS CORRECT AND COMPLETE TO THE BEST OF MY KNOWLEDGE AND BELIEF.

PROFESSIONAL LAND SURVEYOR

DATE 5/28/2020

- TIE SKETCH

NOTE: THE CORNER LANDS 10'± SOUTH OF GOLDEN AVE. CENTERLINE AND 90'± WEST OF GOLDEN AVE. (SOUTH) CENTERLINE.



- SET 3/4" x 18" IRON REBAR, 1.50#/FT
- FOUND 3/4" IRON ROD
- ⊕ FOUND HARRISON MONUMENT
- ← VINYL "T" POST

ADAMS COUNTY

Survey Monument Record

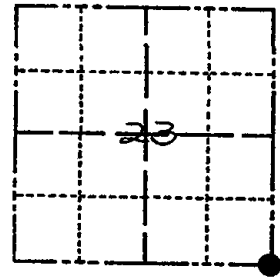
TYPE OF MONUMENT: HARRISON
STATE PLANE COORDINATES: N _____
E _____

ELEVATION - M.S.L. DATUM: _____

THETA ANGLE: _____

FIELD BOOK: 510 PAGE 44 & 45

CORNER NO. 966
SECTION 23
TOWN 14N
RANGE 7E



LOCATION
(Indicated by 'X')

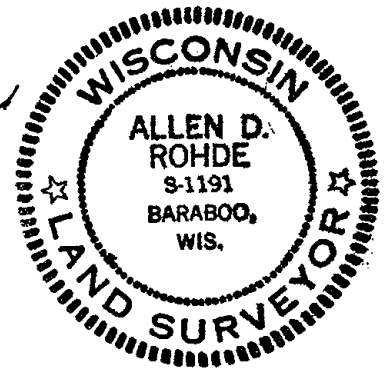
SEAL:

BASIS FOR MONUMENT LOCATION

(Use reverse side if necessary)

Show info such as: History of corner, with reference to Vol. and pg. dates, surveyor; exact description of monument replaced; if location computed, by taped or EDM traverse; landowner remarks, etc.

Found 1" x 30" Nail 5" below surface of road set beside stone. Stone recorded in Vol. 2, Pg. 68, April 12, 1920 by M.C. Smith County Surveyor. Set Harrison Monument at location of stone. E.D.M. Traverse



SEE UPDATE 4-10-08
MARK CARLSON

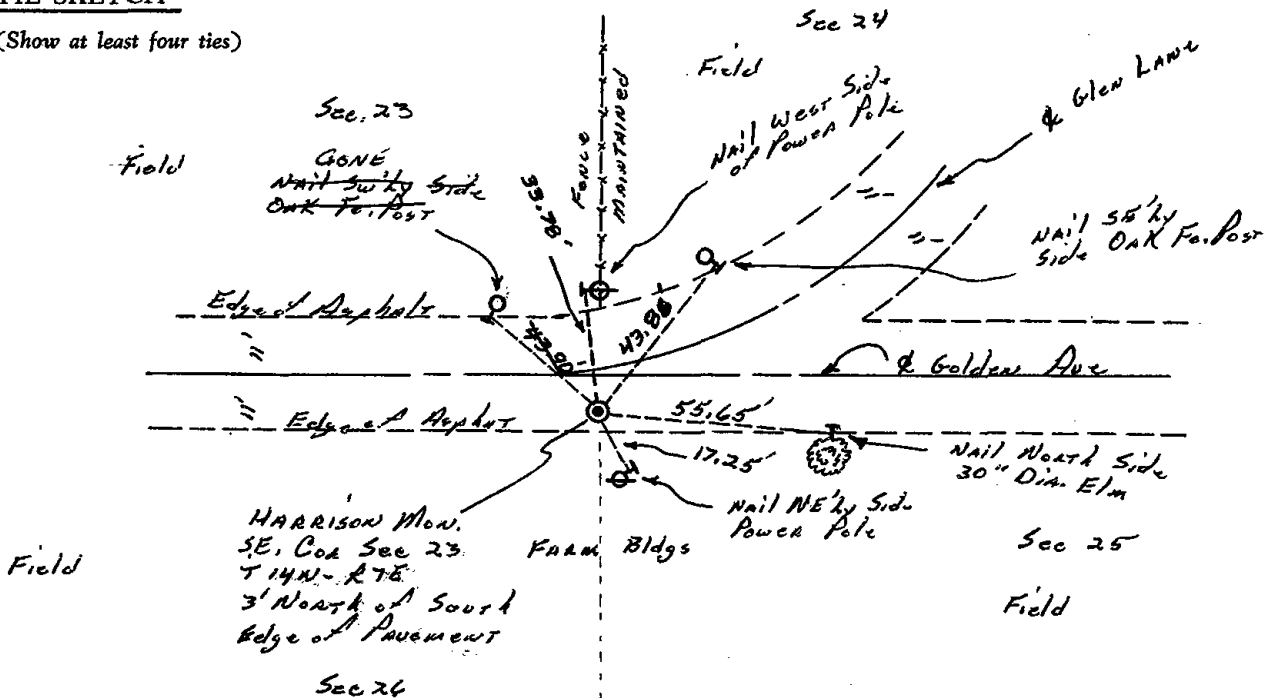
CERTIFIED CORRECT:

Allen D. Rohde
Registered Land Surveyor

DATE: 5-25-76

TIE SKETCH

(Show at least four ties)



MAINTENANCE RECORD

Date	Init.	Remarks
12-8-81	SK-DW	TIES O.K
2-12-86	GR-SS	" "
12-19-90	KZ-SG	OK
11/28/95	SG-SS	OK
3-29-02	JB-SS	1-GONE 4 TIES LEFT

U.S. PUBLIC LAND SURVEY MONUMENT RECORD

ADAMS COUNTY

TYPE OF MONUMENT: Harrison

STATE PLANE COORDINATES: N _____
E _____

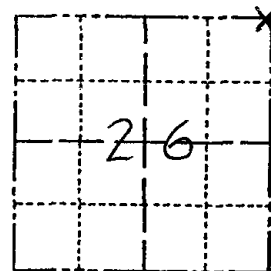
ELEVATION — M.S.L. DATUM: _____

THETA ANGLE: _____

FIELD BOOK: _____ PAGE _____

DRAWN BY: _____

CORNER NO. 966
SECTION 26
TOWN 14N
RANGE 7E



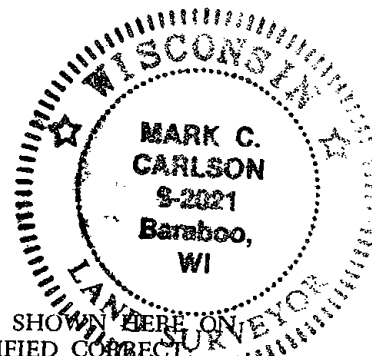
LOCATION
(Indicated by 'X')

BASIS FOR MONUMENT LOCATION

Show info such as: History of corner, with reference to Vol. and pg., dates, surveyor; exact description of monument replaced; if location computed, by taped or EDM traverse; landowner remarks, etc. (Use reverse side if necessary) (in conformance with Section A-E 502 of the Wisconsin Administrative Code)

Al Rohde set Harrison monument at location of found stone and axle set by M.C. Smith in Vol. 2, P 68, April 12, 1920.
I found monument and three ties.
I set one new tie.

SEAL:



DATA SHOWN HERE ON
CERTIFIED CORRECT

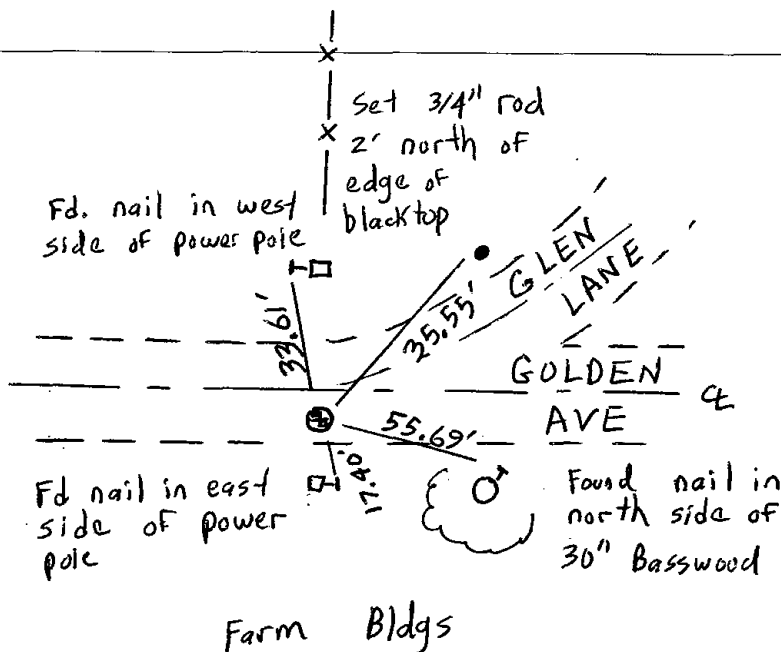
Mark C. Carlson
Registered Land Surveyor

DATE: 4-10-08

TIE SKETCH

Show at least four ties, also fence lines, roads, topo, size and type of witness trees and if off road - best way to arrive at corner.

MON⁺ 3' N,
FROM SOUTH
EDGE / PAVE



MAINTENANCE RECORD

Date	Init.	Remarks
9-25-11	SS	OK