

24
SECTION

14
TOWN

07
RANGE

ADAMS COUNTY

COUNTY CORNER NO: 92A

ROMPORTOL ID: 41407240020A

PUBLIC LAND SURVEY MONUMENT RECORD

TYPE OF MONUMENT: HARRISON MEANDER (BROKEN-TOP)
ADAMS COUNTY COORDINATES, NAD 83 (2007)

N. 111998.715

E. 586291.043

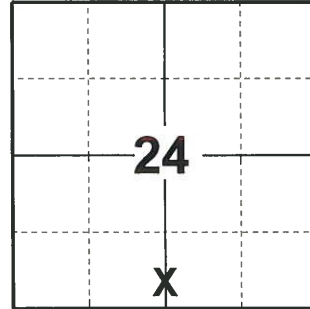
ELEVATION- _____ DATUM _____

FIELD WORK DATE: 04/22/2020

BASIS FOR MONUMENT LOCATION

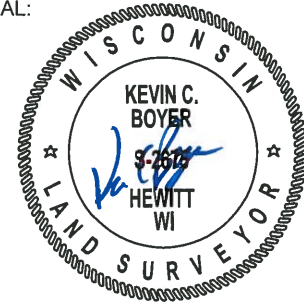
1976 - PLS 1191 RESEARCHED ADAMS COUNTY SURVEY NOTES AND ORIGINAL NOTES. FOUND SURVEY PERFORMED BY M.C. SMITH, APRIL 14, 1920, RECORDED IN VOL. 2, PG. 68. CORNER BEING INACCESSIBLE USED. MEASURED DISTANCE FROM SW CORNER OF SECTION 24 WHICH HAD PREVIOUSLY BEEN RESTORED AND OLD IRON STAKE AT FORTY CORNER. TO ESTABLISH DIRECTION EAST AND WEST FOR LOCATION OF CORNER IN LAKE MASON. DIRECTION NORTH AND SOUTH WAS ALSO DETERMINED BY ABOVE DESCRIBED POINTS. EDM TRAVERSE FROM SE CORNER TO SOUTH 1/4 CORNER 2653.16', M.C. SMITH MEASURED 2653.20'.

2020 - PLS 2675 FOUND HARRISON MEANDER (BROKEN-TOP) FLUSH WITH THE GROUND AND 1 WITNESS. THE MONUMENT AGREES WITH THE WITNESS. ACCEPTED THE HARRISON MEANDER (BROKEN-TOP) AS THE NORTH MEANDER CORNER. SET 4 NEW TIES AND MEASURED TO THE EXISTING WITNESS.



LOCATION
(INDICATE CORNER BY "X")

SEAL:

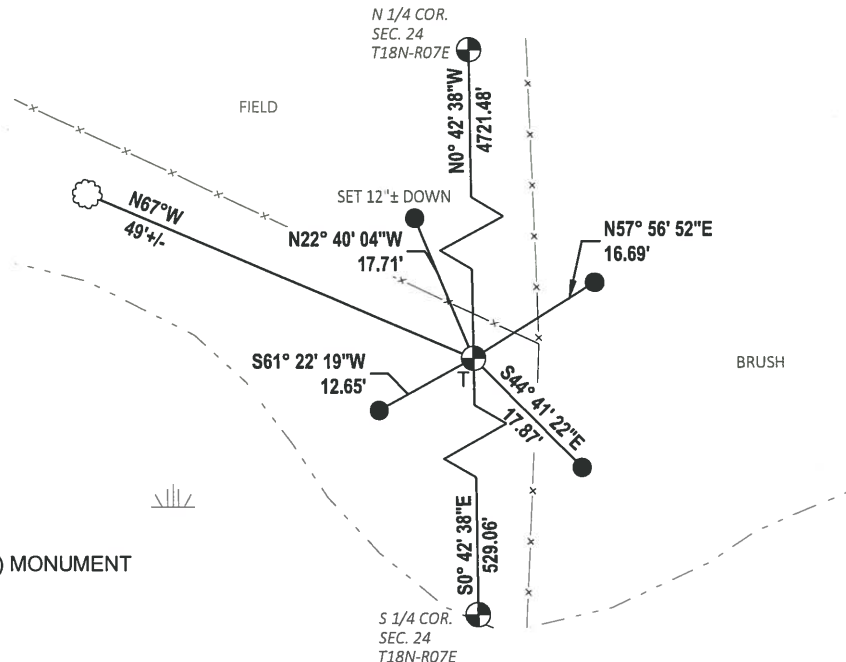


DATA SHOWN HERE ON THIS TIE SHEET IS CORRECT AND COMPLETE TO THE BEST OF MY KNOWLEDGE AND BELIEF.

PROFESSIONAL LAND SURVEYOR

DATE 5/28/2020

TIE SKETCH



- SET 3/4" x 18" IRON REBAR, 1.50#/FT
- ⊕ FOUND HARRISON MEANDER (BROKEN-TOP) MONUMENT
- ┆ VINYL "T" POST
- ☁ WITNESS TREE

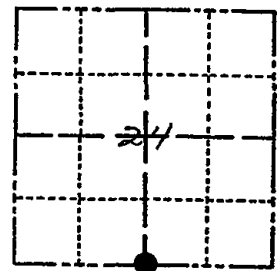
ADAMS COUNTY

Survey Monument Record

TYPE OF MONUMENT: HARRISON Meander Cor.
 STATE PLANE COORDINATES: N _____
 E _____

CORNER NO. 92
 SECTION 24
 TOWN 14 N
 RANGE 7 E

ELEVATION — M.S.L. DATUM: _____
 THETA ANGLE: _____
 FIELD BOOK: 486 PAGE 44



LOCATION
(Indicated by 'X')

BASIS FOR MONUMENT LOCATION

(Use reverse side if necessary)

Show info such as: History of corner, with reference to Vol. and pg, dates, surveyor; exact description of monument replaced; if location computed, by taped or EDM traverse; landowner remarks, etc.

Researched Adams County survey notes and original notes. Found survey performed by M.C. Smith, April 14, 1920, recorded in Vol. 2, Pg. 68. Corner being inaccessible used measured distance from SW Cor. of Section 24 which had previously been restored and old iron stk at forty corner to establish direction east and west for location of corner in Lake Mason. Direction north and south was also determined by above described points EDM. Traverse from SW Cor. to South 1/4 corner 2653.16', M.C. Smith measured 2653.20'

SEAL:



CERTIFIED CORRECT:

Al Rohde
 Registered Land Surveyor

DATE: 10-7-76

TIE SKETCH

(Show at least four ties)

