

24
SECTION

14
TOWN

07
RANGE

ADAMS COUNTY

COUNTY CORNER NO.: 92B

ROMPORTOL ID: 41407240020B

PUBLIC LAND SURVEY MONUMENT RECORD

TYPE OF MONUMENT: 1-1/4" IRON ROD
ADAMS COUNTY COORDINATES, NAD 83 (2007)

N. 111464.024

E. 586727.515

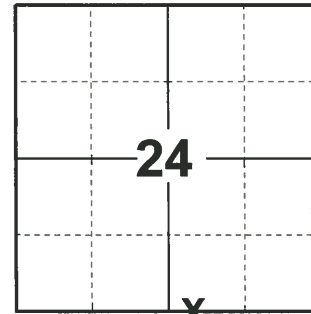
ELEVATION- DATUM

FIELD WORK DATE: 04/22/2020

BASIS FOR MONUMENT LOCATION

2000 - PLS 2021 SET MEANDER CORNER 429.92' EAST OF COMPUTED N1/4 CORNER ON LINE BETWEEN EXISTING NORTH MEANDER CORNER (326.08' W OF N1/4 CORNER) AND N1/4 CORNER OF SECTION 30-14-08. N1/4 CORNER OF SECTION 25 COMPUTED BASED ON CSM #3049.

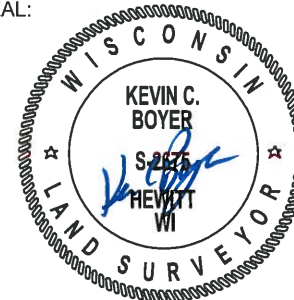
2020 - PLS 2675 FOUND 1-1/4" IRON ROD FLUSH WITH THE GROUND AND DID NOT RECOVER ANY EXISTING TIES OR WITNESSES. ACCEPTED THE 1-1/4" IRON ROD AS THE MEANDER CORNER LOCATION AND SET 4 NEW TIES.



LOCATION

(INDICATE CORNER BY "X")

SEAL:

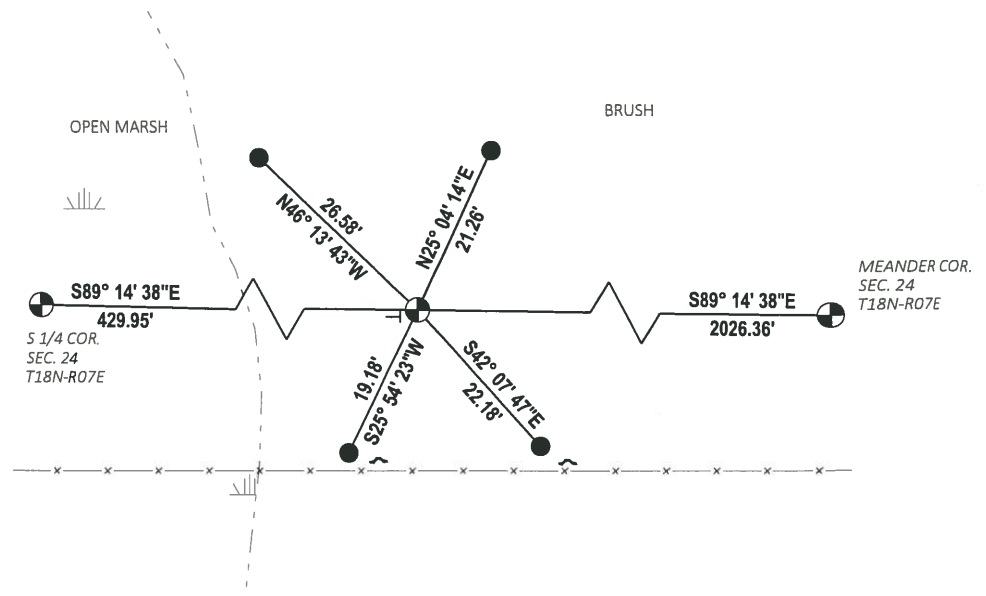


DATA SHOWN HERE ON THIS TIE SHEET IS CORRECT AND COMPLETE TO THE BEST OF MY KNOWLEDGE AND BELIEF.

PROFESSIONAL LAND SURVEYOR

DATE 5/28/2020

- TIE SKETCH



- SET 3/4" x 18" IRON REBAR, 1.50#/FT
- ⊙ FOUND 1-1/4" IRON ROD MONUMENT
- ┘ STEEL FENCE POST
- └ VINYL "T" POST

MAINTENANCE RECORD

Date	Init.	Remarks
12-15-81	SK-BW	CORNER O.K
8-30-91	JG-SS	" " "
11/28/95	JG-SS	MON. OK
1-26-06	JG-SS	OK