

24
SECTION

14
TOWN

07
RANGE

ADAMS COUNTY

COUNTY CORNER NO: 92C

ROMPORTOL ID: 41407240020C

PUBLIC LAND SURVEY MONUMENT RECORD

TYPE OF MONUMENT: 1-1/4" IRON ROD

ADAMS COUNTY COORDINATES, NAD 83 (2007)

N. 110810.606

E. 586299.014

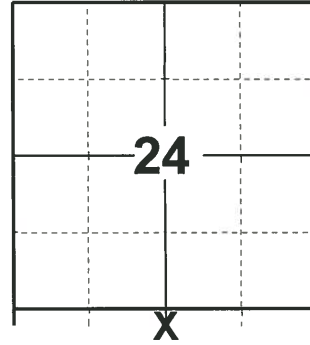
ELEVATION- - - - - DATUM - - - - -

FIELD WORK DATE: 04/22/2020

BASIS FOR MONUMENT LOCATION

2000 - PLS 2021 COMPUTED N1/4 CORNER USING DISTANCES ON CSM #3049 FROM EXISTING MEANDER CORNER TO WEST AND 3/4" ROD AT C1/4 CORNER. SET THIS MEANDER CORNER ON LINE BETWEEN COMPUTED N1/4 CORNER AND C1/4 CORNER, 659.06' SOUTH OF N1/4 CORNER.

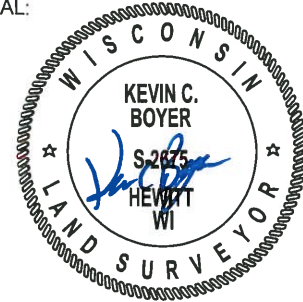
2020 - PLS 2675 FOUND 1-1/4" IRON ROD FLUSH WITH THE GROUND AND 4 WITNESS TREES. THE MONUMENT AGREES WITH ALL 4 WITNESS TREES. ACCEPTED THE 1-1/4" IRON ROD AS THE SOUTH MEANDER CORNER LOCATION. SET 4 NEW TIES AND MEASURED TO THE EXISTING WITNESS TREES.



LOCATION

(INDICATE CORNER BY "X")

SEAL:

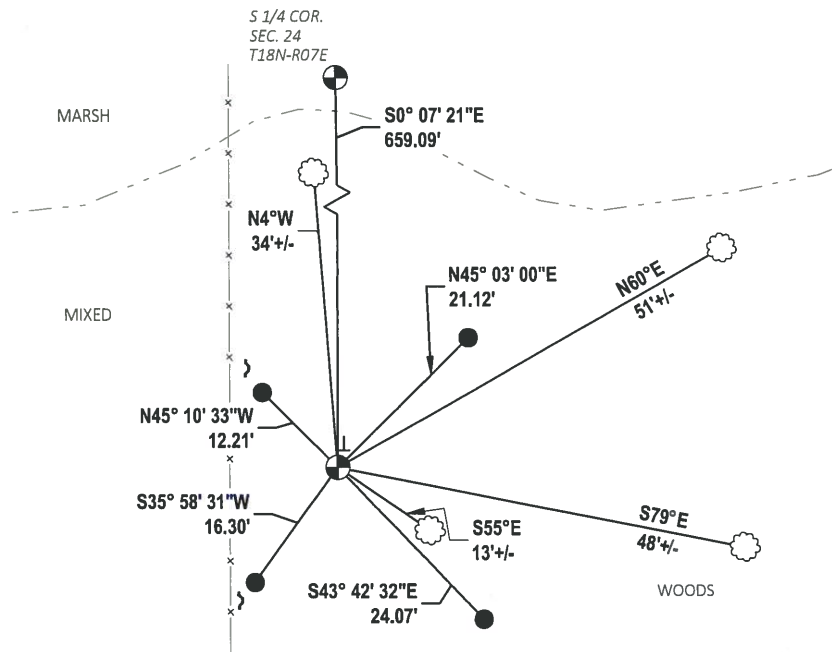


DATA SHOWN HERE ON THIS TIE SHEET IS CORRECT AND COMPLETE TO THE BEST OF MY KNOWLEDGE AND BELIEF.

PROFESSIONAL LAND SURVEYOR

DATE 5/28/2020

TIE SKETCH



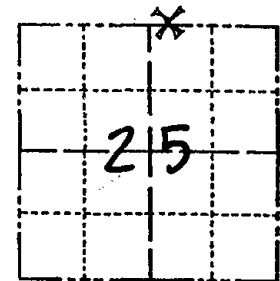
- SET 3/4" x 18" IRON REBAR, 1.50#/FT
- ⊕ FOUND 1-1/4" IRON ROD MONUMENT
- ~ STEEL FENCE POST
- ⊥ VINYL "T" POST
- ⊗ WITNESS TREE

U.S. PUBLIC LAND SURVEY MONUMENT RECORD

ADAMS COUNTY

TYPE OF MONUMENT: SET 1 1/4" x 30" ROD
 STATE PLANE COORDINATES: N _____
 E _____
 ELEVATION — M.S.L. DATUM: _____
 THETA ANGLE: _____
 FIELD BOOK: 25-14-7 WIS. LAND CO. PAGE 10 FEB 00
 DRAWN BY: SMAY

CORNER NO. 92 C
 SECTION 25
 TOWN 14 N
 RANGE 7 E



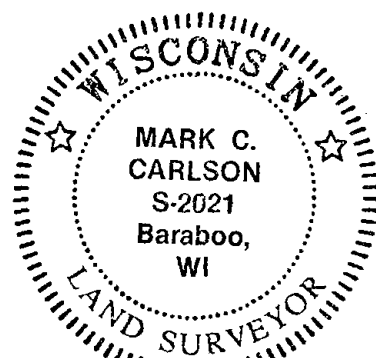
LOCATION
(Indicated by 'X')

BASIS FOR MONUMENT LOCATION

Show info such as: History of corner, with reference to Vol. and pg., dates, surveyor; exact description of monument replaced; if location computed, by taped or EDM traverse; landowner remarks, etc. (Use reverse side if necessary) (in conformance with Section A-E 502 of the Wisconsin Administrative Code)

Set meander corner 429.92' east of computed N $\frac{1}{4}$ corner on line between existing N. meander corner (326.08' W of N $\frac{1}{4}$ corner) and N $\frac{1}{4}$ corner of Sec. 30-14-8. N $\frac{1}{4}$ corner of Sec. 25 computed based on CSM #3049.

SEAL:



DATA SHOWN HERE ON
CERTIFIED CORRECT:

Mark C. Carlson
Registered Land Surveyor

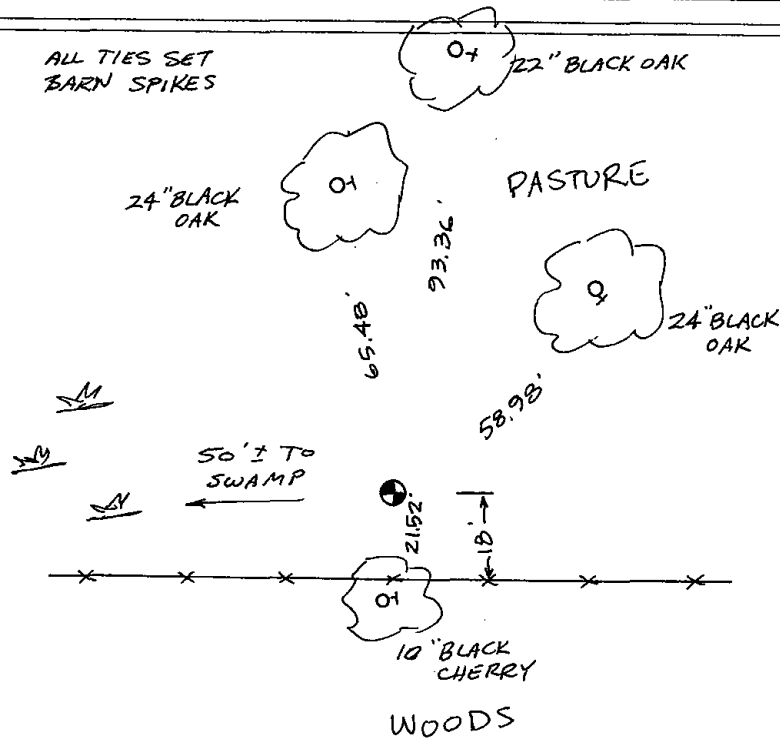
DATE: 2-15-00

TIE SKETCH

Show at least four ties, also fence lines, roads, topo, size and type of witness trees and if off road - best way to arrive at corner.

*BEST WAY TO CORNER FROM
GOLDEN AVE. ACROSS PASTURE.*

ALL TIES SET
BARN SPIKES



MAINTENANCE RECORD

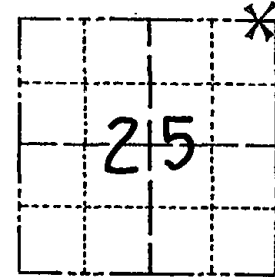
Date	Init.	Remarks
10 FEB 00	SMAY	SET 1 1/4" ROD
1-26-06	JG	OK

U.S. PUBLIC LAND SURVEY MONUMENT RECORD

ADAMS COUNTY

TYPE OF MONUMENT: SET 1/4" x 30" ROD
 STATE PLANE COORDINATES: N _____
 E _____
 ELEVATION — M.S.L. DATUM: _____
 THETA ANGLE: _____
 FIELD BOOK: 25-14-7 WIS. LAND CO. PAGE 10 FEB 00
 DRAWN BY: SMAP

CORNER NO. _____
 SECTION 25
 TOWN 14N
 RANGE 7E



LOCATION
(Indicated by 'X')

BASIS FOR MONUMENT LOCATION

Show info such as: History of corner, with reference to Vol. and pg., dates, surveyor; exact description of monument replaced; if location computed, by taped or EDM traverse; landowner remarks, etc. (Use reverse side if necessary) (in conformance with Section A-E 502 of the Wisconsin Administrative Code)

Section corner falls in lake. Found meander corner to south of lake and extended east section line from E 1/4 corner through meander corner to meet line between north meander corner of Sec. 25 and N 1/4 corner of Sec. 30-14-8. Computing section corner thus, set this meander corner 173.51 feet west of computed point.

SEAL:



DATA SHOWN HERE ON CERTIFIED CORRECT:

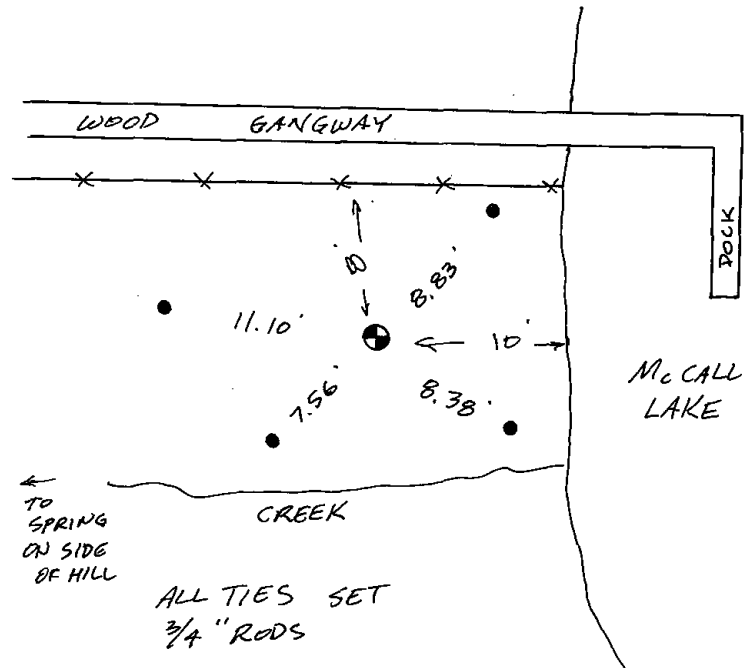
Mark C. Carlson
 Registered Land Surveyor

DATE: 2-15-00

TIE SKETCH

Show at least four ties, also fence lines, roads, topo, size and type of witness trees' and if off road - best way to arrive at corner.

BEST WAY TO CORNER ACROSS PASTURE FROM GOLDEN AVE.



MAINTENANCE RECORD

Date	Init.	Remarks
10 FEB 00	SMAP	SET 1/4" ROD