

24  
SECTION

14  
TOWN

07  
RANGE

# ADAMS COUNTY

COUNTY CORNER NO: 92D

ROMPORTOL ID: 41407240020D

## PUBLIC LAND SURVEY MONUMENT RECORD

TYPE OF MONUMENT: HARRISON MEANDER

ADAMS COUNTY COORDINATES, NAD 83 (2007)

N. 111457.681

E. 585971.929

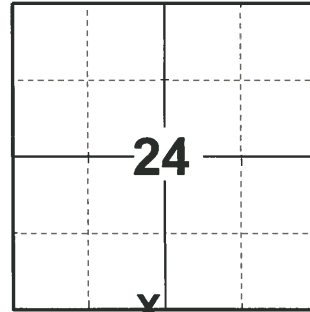
ELEVATION-      DATUM     

FIELD WORK DATE: 04/22/2020

### BASIS FOR MONUMENT LOCATION

1976 - PLS 1191 RESEARCHED ADAMS COUNTY SURVEY NOTES AND ORIGINAL GOVERNMENT NOTES. FOUND SURVEY MAD BY M.C. SMITH, APRIL 19, 1920, RECORDED IN VOL. 2, PG. 68. CORNER BEING INACCESSIBLE USED MEASURED DISTANCE FROM NW CORNER OF SECTION 25 WHICH HAD PREVIOUSLY BEEN RESTORED AND OLD IRON STAKE AT FORTY CORNER TO ESTABLISH DIRECTION EAST AND WEST FOR LOCATION OF CORNER IN LAKE MASON. DIRECTION NORTH AND SOUTH WAS ALSO DETERMINED BY THE ABOVE DESCRIBED POINTS. EDM TRAVERSE FROM THE NW CORNER SECTION 25 TO THE NORTH 1/4 CORNER SECTION 25 IS 2653.16' M.C. SMITH MEASURED 2653.20.

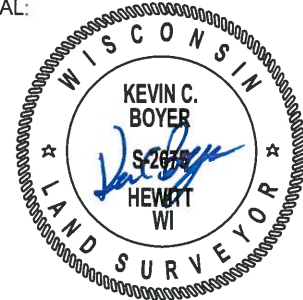
2020 - PLS 2675 FOUND HARRISON MEANDER MONUMENT FLUSH WITH THE GROUND AND 1 WITNESS TREE. THE MONUMENT AGREES WITH THE WITNESS TREE. ACCEPTED THE HARRISON MEANDER AS THE WEST MEANDER CORNER LOCATION. SET 4 NEW TIES AND MEASURED TO THE EXISTING WITNESS TREE.



LOCATION

(INDICATE CORNER BY "X")

SEAL:

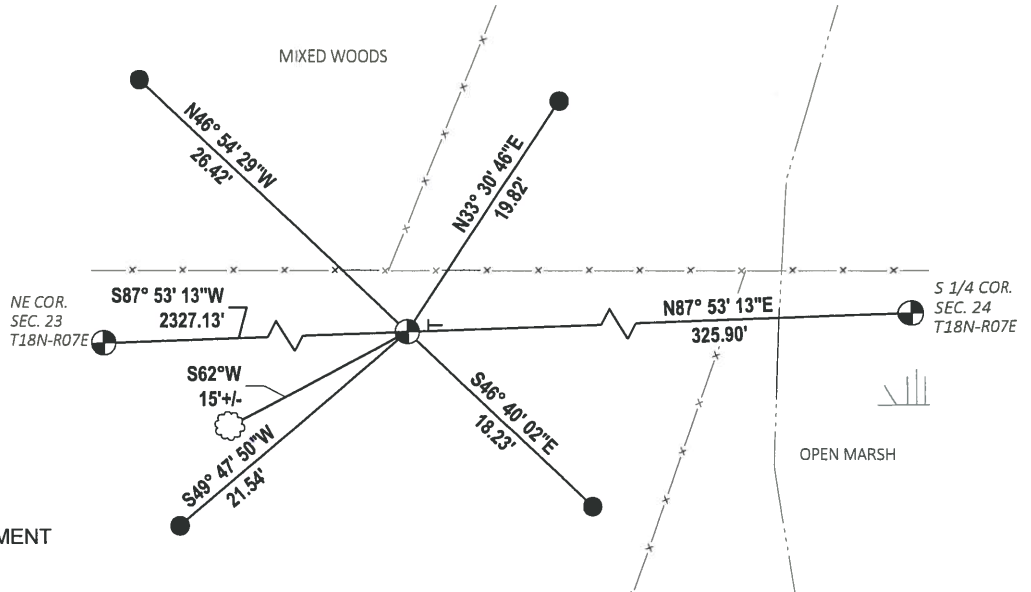


DATA SHOWN HERE ON THIS TIE SHEET IS CORRECT AND COMPLETE TO THE BEST OF MY KNOWLEDGE AND BELIEF.

PROFESSIONAL LAND SURVEYOR

DATE 5/28/2020

### TIE SKETCH



- SET 3/4" x 18" IRON REBAR, 1.50#/FT
- ⊕ FOUND HARRISON MEANDER MONUMENT
- ⊥ VINYL "T" POST
- ☁ WITNESS TREE