

28
SECTION

14
TOWN

07
RANGE

ADAMS COUNTY

COUNTY CORNER NO: 97
ROMPORTOL ID: 41407282000

PUBLIC LAND SURVEY MONUMENT RECORD

TYPE OF MONUMENT: HARRISON
ADAMS COUNTY COORDINATES, NAD 83 (2007)

N. 108785.566

E. 573148.742

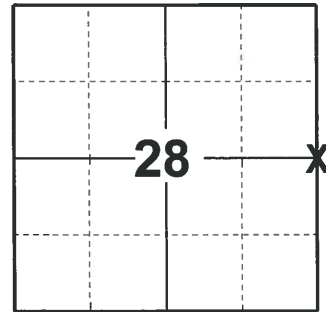
ELEVATION- DATUM

FIELD WORK DATE: 04/30/2020

BASIS FOR MONUMENT LOCATION

1982 - PLS 1444 THIS CORNER WAS SET ON LINE BETWEEN SECTION CORNERS AND ON THE EAST-WEST FENCE LINE AS IT VERY NEARLY FITS SINGLE PROPORTIONATE MEASURE AND DOES FIT POSSESSION.

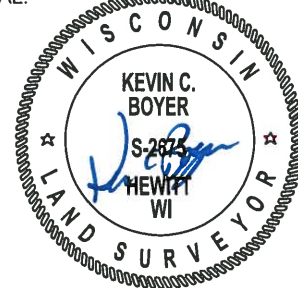
2020 - PLS 2675 FOUND HARRISON 4"± ABOVE THE GROUND, 1 TIE, AND 1 WITNESS. THE MONUMENT AGREES WITH THE TIE AND WITNESS. ACCEPTED THE HARRISON AS THE CORNER LOCATION. SET 4 NEW TIES AND MEASURED TO THE EXISTING TIE AND WITNESS.



LOCATION

(INDICATE CORNER BY "X")

SEAL:

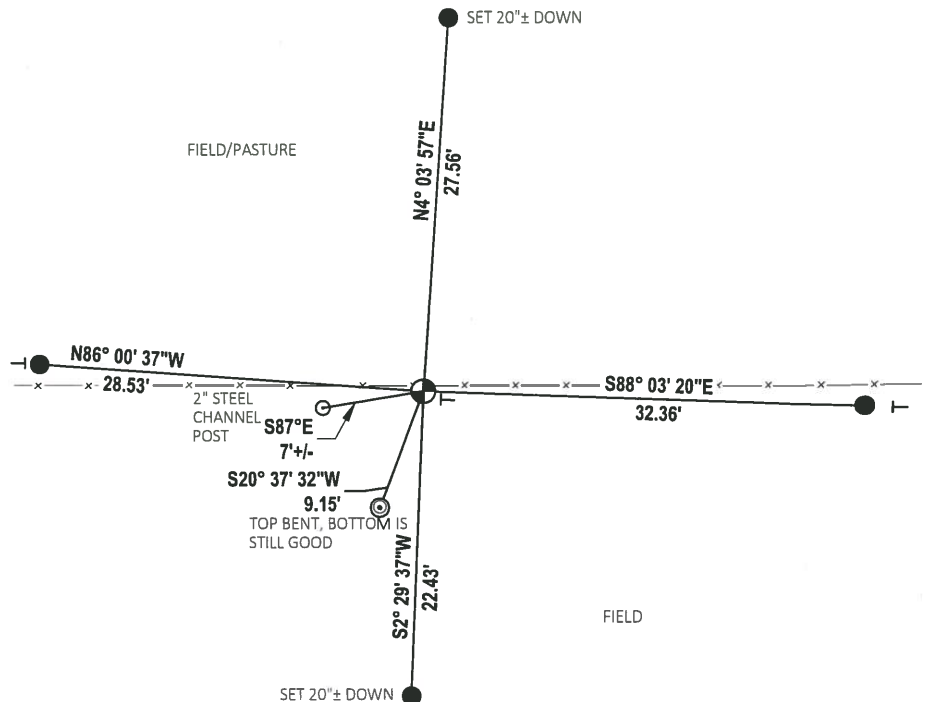
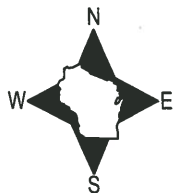


DATA SHOWN HERE ON THIS TIE SHEET IS CORRECT AND COMPLETE TO THE BEST OF MY KNOWLEDGE AND BELIEF.

PROFESSIONAL LAND SURVEYOR

DATE 5/28/2020

- TIE SKETCH



- SET 3/4" x 18" IRON REBAR, 1.50#/FT
- ⊙ FOUND 2-3/8" O.D. IRON PIPE
- ⊕ FOUND HARRISON MONUMENT
- VINYL "T" POST

Government Land Corner Certificate

ADAMS County

TYPE OF MONUMENT: HARRISON

STATE PLANE COORDINATES: N _____
E _____

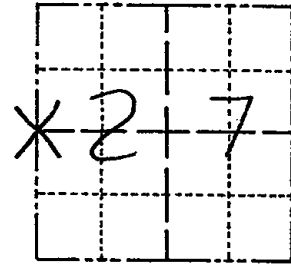
ELEVATION — M.S.L. DATUM: _____

THETA ANGLE: _____

FIELD BOOK: 92 PAGE 123

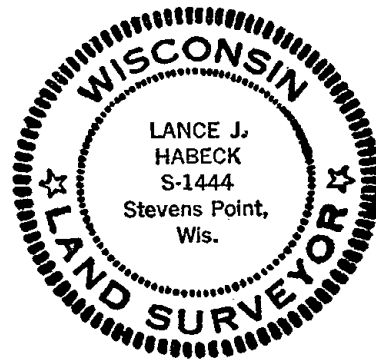
DRAWN BY: S.J.H.

CORNER NO. 97
SECTION 27
TOWN 14
RANGE 7



LOCATION
(Indicated by 'X')

SEAL:



This corner was set on line between section corners and on the east-west fence line as it very nearly fits single proportionate measure and does fit possession.

DATA SHOWN HERE ON
CERTIFIED CORRECT:

Lance J. Habeck
Registered Land Surveyor

DATE: 7/29/82

TIE SKETCH

Show at least four ties, also fence lines, roads, topo, size and type of witness trees and if off road - best way to arrive at corner.

