

PUBLIC LAND SURVEY MONUMENT RECORD

TYPE OF MONUMENT: HARRISON (BROKEN-TOP)
 ADAMS COUNTY COORDINATES, NAD 83 (2007)

N. 108728.837

E. 583662.125

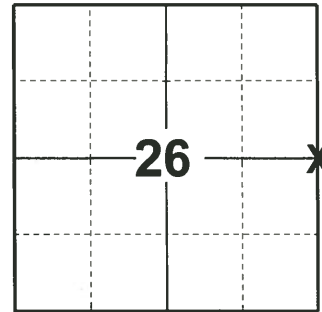
ELEVATION- - - - - DATUM - - - - -

FIELD WORK DATE: 04/28/2020

BASIS FOR MONUMENT LOCATION

1976 - PLS 1191 RESEARCHED ADAMS COUNTY SURVEY NOTES, FOUND SURVEY PERFORMED BY M.C. SMITH APRIL 12-14, 1920. RECORDED IN VOL. 2, PG. 68. EDM TRAVERSED TO SOUTH FROM NW CORNER OF SECTION 25 AND FOUND FENCE CORNER WITH METAL STRAP IN GROUND VERTICALLY. DUG AND FOUND STONES AROUND SAME WITH OLD CROCKERY UNDERNEATH. MONUMENTED THIS POINT WITH HARRISON MONUMENT.

2020 - PLS 2675 FOUND HARRISON (BROKEN-TOP) MONUMENT 6"± BELOW THE GROUND, 3 TIES, AND 1 WITNESS. THE MONUMENT AGREES WITH ALL TIES AND THE WITNESS. ACCEPTED THE HARRISON (BROKEN-TOP) AS THE CORNER LOCATION. SET 2 NEW TIES AND MEASURED TO A FOUND PROPERTY IRON AND THE EXISTING TIES AND WITNESS.



LOCATION
(INDICATE CORNER BY "X")

SEAL:



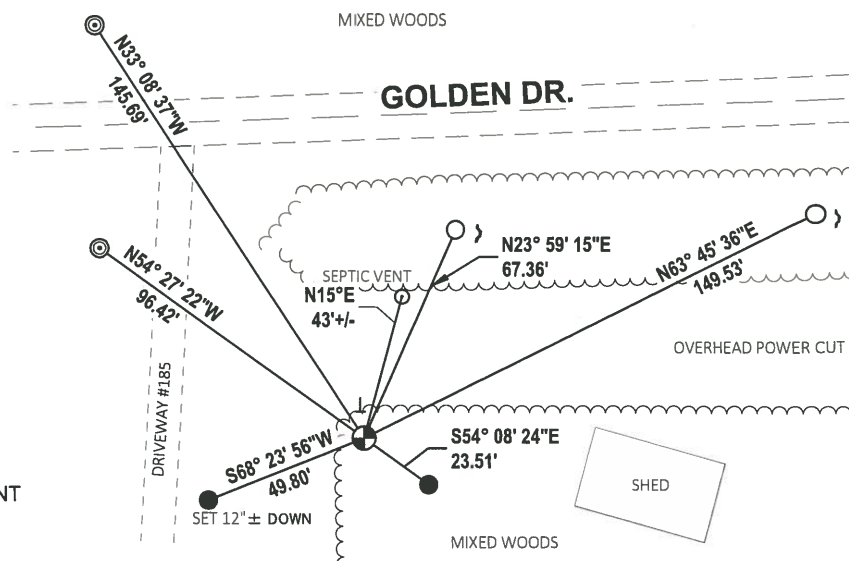
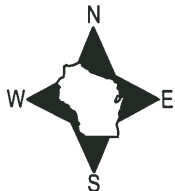
DATA SHOWN HERE ON THIS TIE SHEET IS CORRECT AND COMPLETE TO THE BEST OF MY KNOWLEDGE AND BELIEF.

PROFESSIONAL LAND SURVEYOR

DATE 5/28/2020

- TIE SKETCH

NOTE: THE CORNER LANDS 95'± SOUTH OF GOLDEN DR. CENTERLINE.



- SET 3/4" x 18" IRON REBAR, 1.50#/FT
- FOUND 3/4" IRON ROD
- ◎ FOUND 2-3/8" O.D. IRON PIPE
- ⊕ FOUND HARRISON (BROKEN-TOP) MONUMENT
- ↘ STEEL FENCE POST
- VINYL "T" POST

ADAMS COUNTY

Survey Monument Record

TYPE OF MONUMENT: HARRISON (STANDARD)

STATE PLANE COORDINATES: N _____

E _____

ELEVATION — M.S.L. DATUM: _____

THETA ANGLE: _____

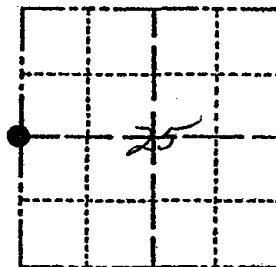
FIELD BOOK: 486 PAGE 46

CORNER NO. 99

¹⁰⁹⁵ SECTION 25

TOWN 14N

RANGE 7E



LOCATION
(Indicated by 'X')

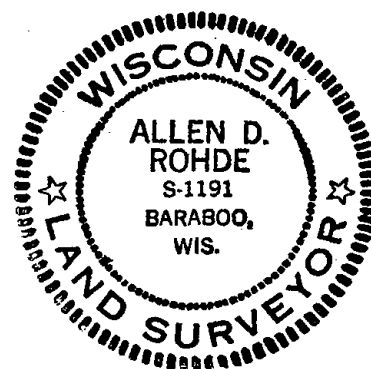
SEAL:

BASIS FOR MONUMENT LOCATION

(Use reverse side if necessary)

Show info such as: History of corner, with reference to Vol. and pg, dates, surveyor; exact description of monument replaced; if location computed, by taped or EDM traverse; landowner remarks, etc.

Researched Adams County survey note. Found Survey performed by M.C. Smith April 12 thru 14, 1920, recorded in Vol. 2 Pg. 68 E.D.M. Traversed To South From N.W. Cor of Sec 25 and Found Fence Corner with METAL STRAP in ground vertically. Dug and Found stones around same with old GROCERY underneath. Monumented this point with HARRISON Monument



CERTIFIED CORRECT:

Allen D. Rohde
Registered Land Surveyor

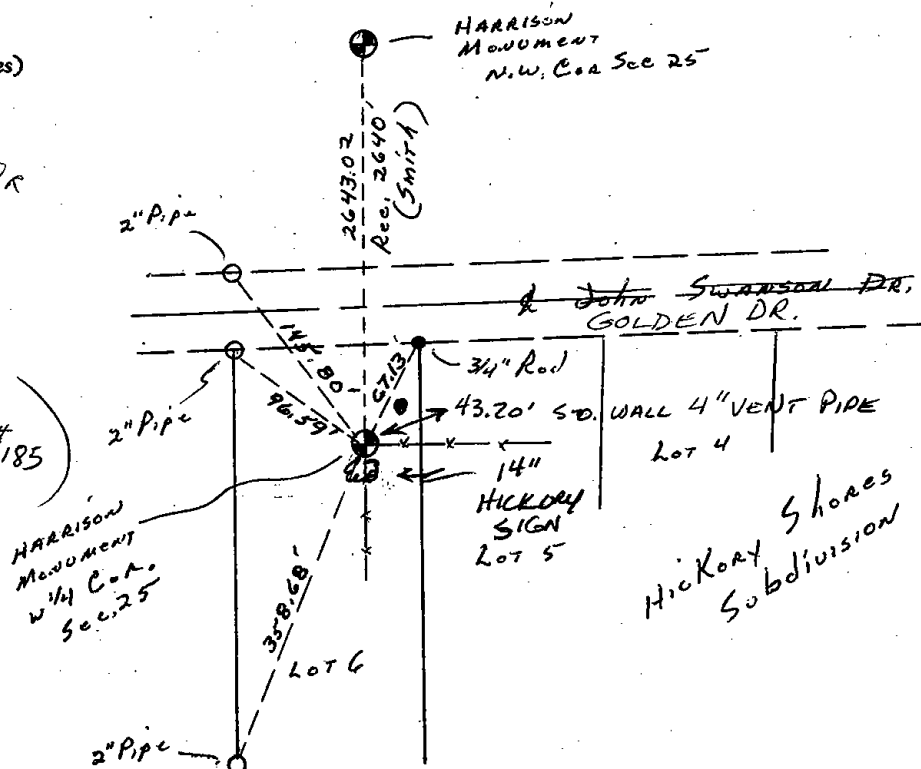
DATE: 12-29-76

TIE SKETCH

(Show at least four ties)

± 90' S. of E of GOLDEN DR

NOTE:
(60' EAST OF DRIVEWAY HSE # 185)



MAINTENANCE RECORD

Date	Init.	Remarks
12-8-81	SK-DN	Ties O.K.
2 12 86	GR-SS	O.K.
8-21-91	GA-JG	OK
11/28/93	SG-SS	MON. OK
1-26-00	JG-SS	1-GONE 1-NEW