

PUBLIC LAND SURVEY MONUMENT RECORD

TYPE OF MONUMENT: HARRISON
ADAMS COUNTY COORDINATES, NAD 83 (2007)

N. 106175.812

E. 570488.307

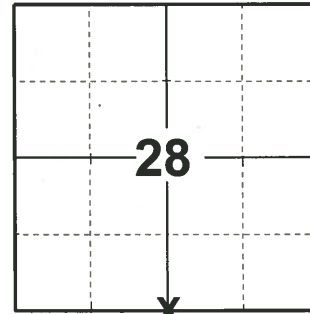
ELEVATION- - - - - DATUM - - - - -

FIELD WORK DATE: 04/29/2020

BASIS FOR MONUMENT LOCATION

1975 - PLS 922 CHECKED COUNTY SURVEY RECORDS FOR RESURVEYS AND NONE WERE ON FILE. COULD FIND NO EVIDENCE OF CORNER IN FIELD OCCUPATION WISE. RAN TRANSIT TAPE-TRAVERSE OF SECTION AND SET TEMPORARY POINT EQUIDISTANT AND ON LINE BETWEEN NW AND NE CORNERS OF SECTION 33. WITH ELECTRONIC METAL LOCATOR FOUND A 1" STRAP IRON 1.5' WEST OF COMPUTED CORNER AND MONUMENTED WITH HARRISON.

2020 - PLS 2675 FOUND HARRISON 24"± BELOW THE FIELD AND DID NOT RECOVER ANY EXISTING TIES OR WITNESSES DUE TO FENCE LINE REMOVAL FOR FIELD EXPANSION. THE CORNER WAS VERIFIED BY THE SECTION SUMMARY DISTANCES BETWEEN THE SW AND SE CORNERS OF SECTION 28, WHICH BOTH DISTANCES AGREE. ACCEPTED THE HARRISON AS THE BEST EVIDENCE OF THE CORNER LOCATION AND SET 4 NEW TIES.



LOCATION
(INDICATE CORNER BY "X")

SEAL:

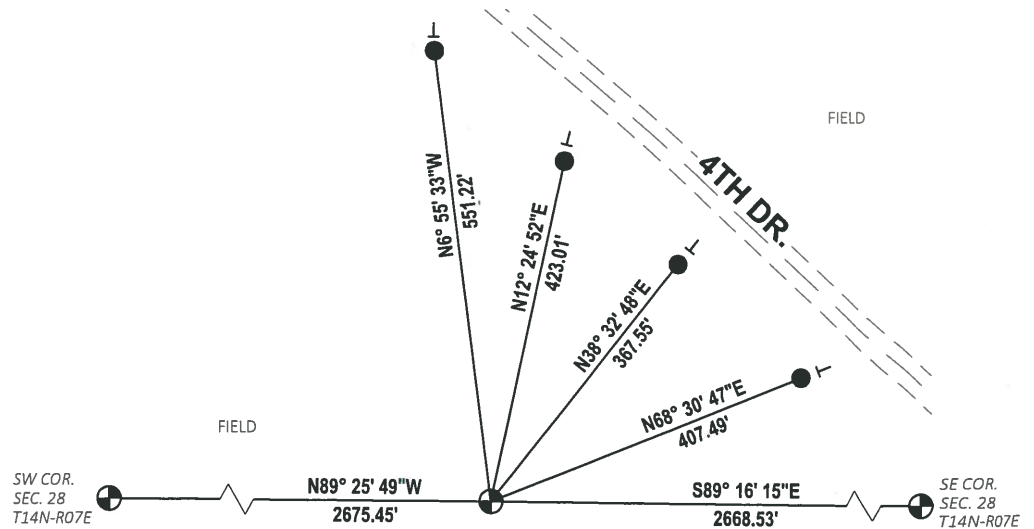
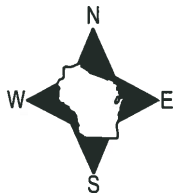


DATA SHOWN HERE ON THIS TIE SHEET IS CORRECT AND COMPLETE TO THE BEST OF MY KNOWLEDGE AND BELIEF.

PROFESSIONAL LAND SURVEYOR

DATE 5/28/2020

- TIE SKETCH



- SET 3/4" x 18" IRON REBAR, 1.50#/FT
- ⊕ FOUND HARRISON MONUMENT
- VINYL "T" POST

ADAMS COUNTY

Survey Monument Record

TYPE OF MONUMENT: 30" HARRISON BURIED 24"

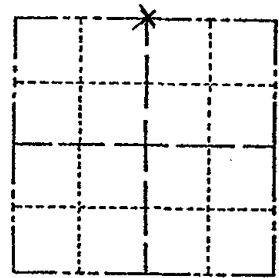
STATE PLANE COORDINATES: N _____
E _____

ELEVATION — M.S.L. DATUM: _____

THETA ANGLE: _____

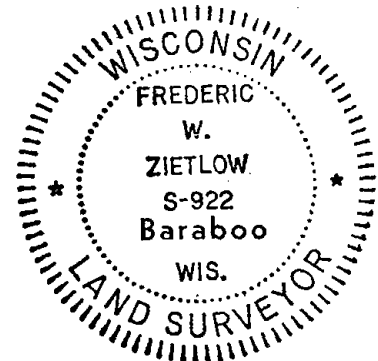
FIELD BOOK: _____ PAGE _____

CORNER NO. 764
SECTION 33
TOWN 14N
RANGE 7E



LOCATION
(Indicated by 'X')

SEAL:



BASIS FOR MONUMENT LOCATION

(Use reverse side if necessary)

Show info such as: History of corner, with reference to Vol. and pg, dates, surveyor; exact description of monument replaced; if location computed, by taped or EDM traverse; landowner remarks, etc.

CHECKED Co. SURVEY RECORDS FOR RESURVEYS & NONE WERE ON FILE. COULD FIND NO EVIDENCE OF CORNER IN FIELD OCCUPATION WISE. RAN TRANSIT TAPE-TRAVERSE OF SECTION & SET TEMPORARY POINT EQUA-DISTANT ON LINE BETWEEN NW & NE CORNERS, WITH ELECTRONIC METAL LOCATOR WE FOUND A 1" STRAP IRON 1.5' WEST OF COMPUTED CORNER & MONUMENTED SAME.

CORNER O.K. 10-22-76 RW-SS

CERTIFIED CORRECT:

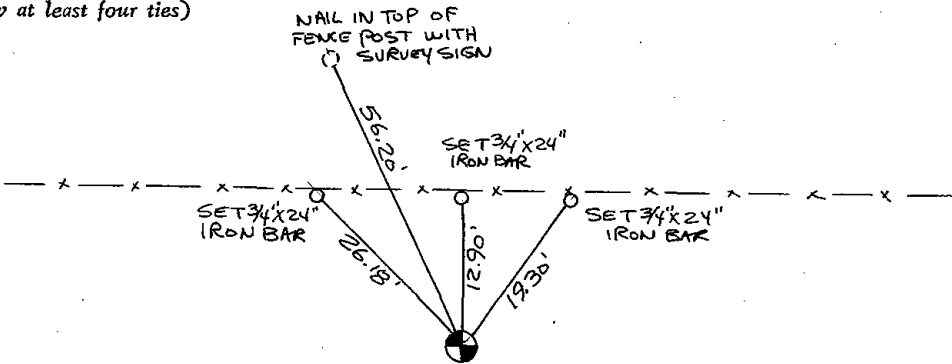
Frederic W. Zietlow

Registered Land Surveyor

DATE: JULY 31, 1975

TIE SKETCH

(Show at least four ties)



CULTIVATED FIELD



MAINTENANCE RECORD

Date	Init.	Remarks
12-11-81	SK-DW	CORNERS O.K
3-17-86	GR-SS	" "
8-30-91	JG-SS	" "
4-3-02	JG	OK
2-7-06	JG	OK