

27  
SECTION

14  
TOWN

07  
RANGE

# ADAMS COUNTY

COUNTY CORNER NO.: 108

ROMPORTOL ID: 41407270020

## PUBLIC LAND SURVEY MONUMENT RECORD

TYPE OF MONUMENT: HARRISON  
ADAMS COUNTY COORDINATES, NAD 83 (2007)

N. 106091.818

E. 575800.670

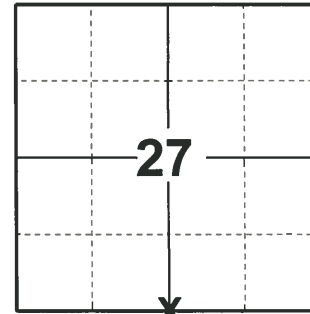
ELEVATION-      DATUM     

FIELD WORK DATE: 04/30/2020

### BASIS FOR MONUMENT LOCATION

1982 - PLS 1444 THIS CORNER WAS SET AT THE INTERSECTION OF TWO FENCE LINES. FIELD AND COMPUTER ANALYSIS INDICATE THAT THIS IS THE BEST PLACE FOR THE CORNER TO BE SET.

2020 - PLS 2675 FOUND HARRISON AT OLD FENCE INTERSECTION 4"± ABOVE THE GROUND AND 3 TIES. THE MONUMENT AGREES WITH ALL 3 TIES. ACCEPTED THE HARRISON AS THE CORNER LOCATION. SET 4 NEW TIES AND MEASURED TO THE EXISTING TIES.



LOCATION

(INDICATE CORNER BY "X")

SEAL:

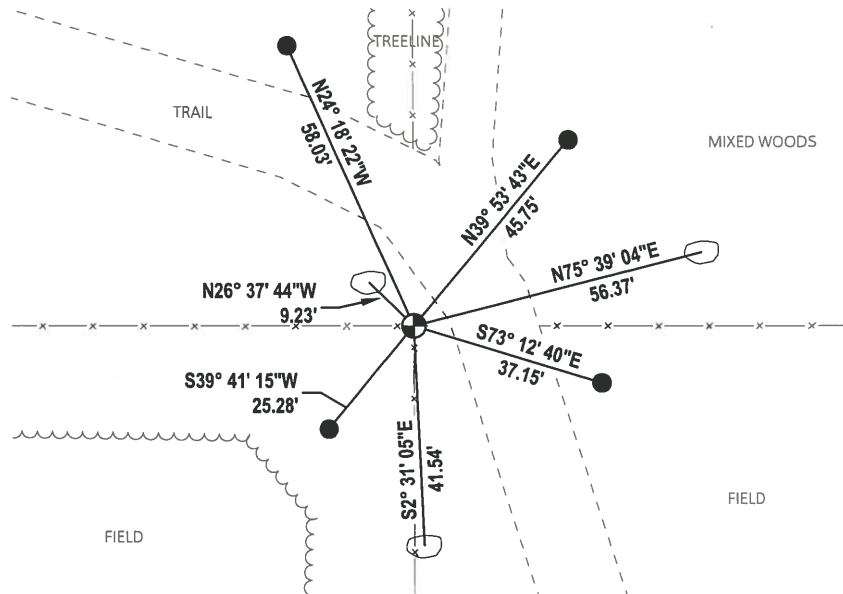


DATA SHOWN HERE ON THIS TIE SHEET IS CORRECT AND COMPLETE TO THE BEST OF MY KNOWLEDGE AND BELIEF.

PROFESSIONAL LAND SURVEYOR

DATE 5/28/2020

### - TIE SKETCH



- SET 3/4" x 18" IRON REBAR, 1.50#/FT
- FOUND BOULDER WITH CROSS CUT
- ⊕ FOUND HARRISON MONUMENT
- VINYL "T" POST

# Government Land Corner Certificate

ADAMS County

TYPE OF MONUMENT: HARRISON

STATE PLANE COORDINATES: N \_\_\_\_\_  
E \_\_\_\_\_

ELEVATION — M.S.L. DATUM: \_\_\_\_\_

THETA ANGLE: \_\_\_\_\_

FIELD BOOK: 92 PAGE 122

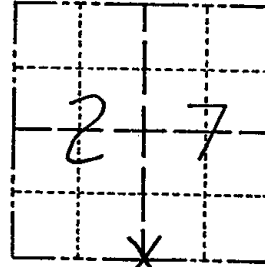
DRAWN BY: S.J.H.

CORNER NO. 108

SECTION 27

TOWN 14

RANGE 7



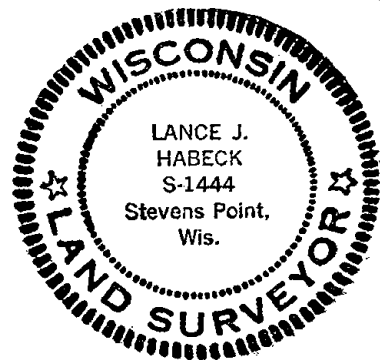
LOCATION  
(Indicated by 'X')

## BASIS FOR MONUMENT LOCATION

Show info such as: History of corner, with reference to Vol. and pg., dates, surveyor; exact description of monument replaced; if location computed, by taped or EDM traverse; landowner remarks, etc. (Use reverse side if necessary)

This corner was set at the intersection of two fencelines. Field and computer analysis indicate that this is the best place for the corner to be set.

SEAL:



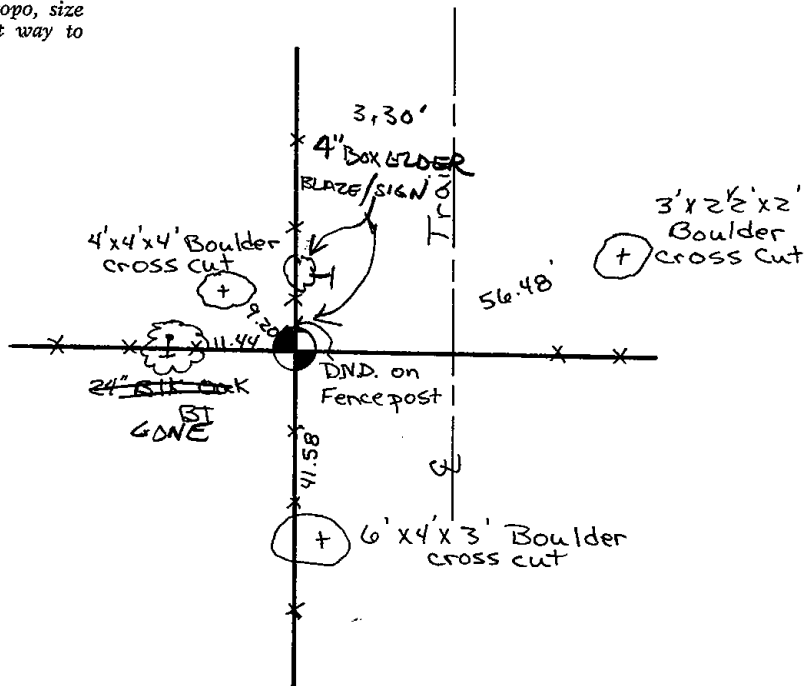
DATA SHOWN HERE ON  
CERTIFIED CORRECT:

Lance J. Habeck  
Registered Land Surveyor

DATE: 9/29/82

## TIE SKETCH

Show at least four ties, also fence lines, roads, topo, size and type of witness trees' and if off road - best way to arrive at corner.





# Government Land Corner Certificate

ADAMS County

TYPE OF MONUMENT: HARRISON

STATE PLANE COORDINATES: N \_\_\_\_\_

E \_\_\_\_\_

ELEVATION — M.S.L. DATUM: \_\_\_\_\_

THETA ANGLE: \_\_\_\_\_

FIELD BOOK: 92 PAGE 122

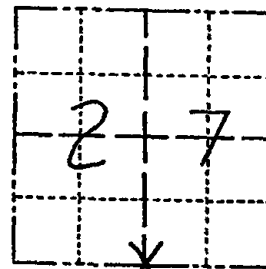
DRAWN BY: S.J.H.

CORNER NO. 108

SECTION 27

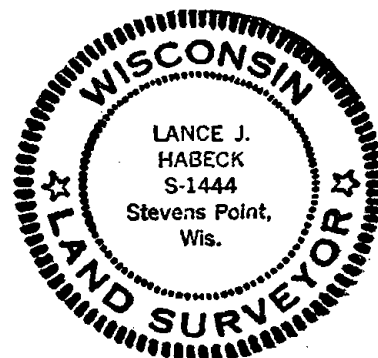
TOWN 14

RANGE 7



LOCATION  
(Indicated by 'X')

SEAL:



DATA SHOWN HERE ON  
CERTIFIED CORRECT:

Lance J. Habeck  
Registered Land Surveyor

DATE: 9/29/82

## BASIS FOR MONUMENT LOCATION

Show info such as: History of corner, with reference to Vol. and pg., dates, surveyor; exact description of monument replaced; if location computed, by taped or EDM traverse; landowner remarks, etc. (Use reverse side if necessary)

This corner was set at the intersection of two fencelines. Field and computer analysis indicate that this is the best place for the corner to be set.

Ties OK Apr 14 '84

## TIE SKETCH

Ken Carlson

Show at least four ties, also fence lines, roads, topo, size and type of witness trees and if off road - best way to arrive at corner.

