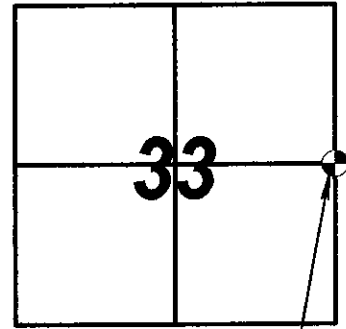


ADAMS COUNTY CERTIFIED U.S. PUBLIC LAND SURVEY MONUMENT RECORD

COUNTY CORNER NO. 117



NORTHING = 103,485.70
EASTING = 573130.09

This record shall show the location of the corner and shall include all of the following elements (a-h)

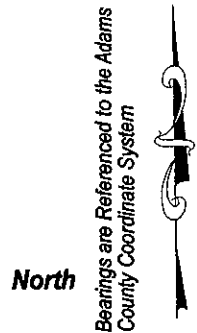
- (a) Identify the corner by the U.S. public land survey system
Corner monument restored:

**THE EAST 1/4 CORNER OF SECTION 33, T 14 N, R 07 E,
ADAMS COUTY, WISCONSIN.**

- (b) Describe any record evidence, monument evidence, occupational evidence, testimonial evidence or any other material evidence considered and whether the monument was found or placed.

I FOUND A HARRISON MONUMENT (BROKEN TOP) 12" BELOW THE SURFACE AS SHOWN IN BOYER 2020 RECORD. AFTER WISDOT RESURFACING PROJECT 6566-00-72, I SET A 3" BERNTSEN SURVEY MARKER SPIKE AT THE CORNER.

- (c) Draft a corner location sketch showing ties to at least 4 witness monuments made of durable lasting material.
- (d) The plan view sketch shall depict sufficient detail to enable accurate relocation of the corner monument if disturbed.



Scale: One Inch = Thirty Feet

LEGEND:

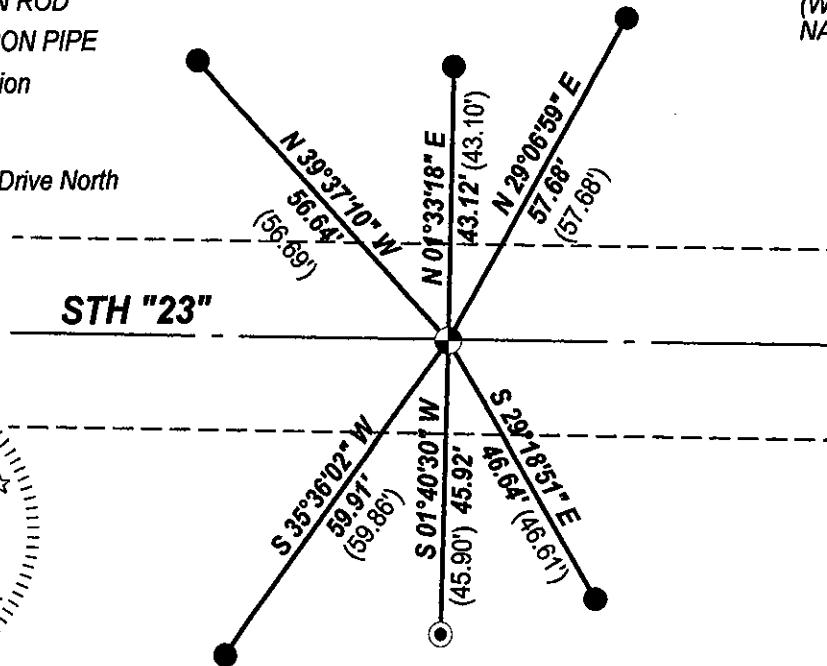
- ⊙ = SET 3" BERNTSEN SURVEY MARKER NAIL
- = FOUND 3/4" IRON ROD
- ⊙ = FOUND 1-1/4" IRON PIPE
- () = Record Information

NOTE:

THE CORNER FALLS 0.6' SOUTH OF THE STH "23" CENTERLINE

(WISCRS) ADAMS COUNTY
NAD83 (2011)

200' +/- East of 4th Drive North



HOUSE #399



1407117

**ADAMS COUNTY
CERTIFIED U.S. PUBLIC LAND SURVEY
MONUMENT RECORD**

(e) Describe any material discrepancy between the location of the corner as restored or reestablished and the location of that corner as previously restored or reestablished by distance and direction. Show the discrepancy on the plan view drawing in (d). Show the distances between the corner as previously restored or reestablished and (1) the corner as restored or reestablished, and (2) to at least 4 of the witness monuments shown on the drawing in (d).

None.

(f) Was the corner restored through acceptance of (1) an obliterated evidence location, or (2) a found perpetuated location?

This corner was accepted at its found location

(g) Was the corner reestablished through proportionate methods? If so, show the method, including the directions and distances to other public land survey corners used as evidence or used for proportioning in determining the corner location.

No.

(h) I, Anthony J. Alt

hereby certify that the corner location shown on this record was determined by me or under my direction and control and that this U.S. public land survey monument record is correct and complete to the best of my knowledge and belief.

Anthony J. Alt 6-25-22



PUBLIC LAND SURVEY MONUMENT RECORD

TYPE OF MONUMENT: HARRISON (BROKEN-TOP)
 ADAMS COUNTY COORDINATES, NAD 83 (2007)

N. 103485.632

E. 573130.077

ELEVATION- _____ DATUM _____

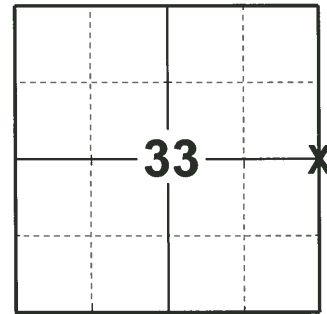
FIELD WORK DATE: 05/06/2020

BASIS FOR MONUMENT LOCATION

1975 - PLS 922 CHECKED COUNTY SURVEY RECORDS FOR RESURVEYS AND NONE WERE ON FILE. SEARCHED VICINITY OF CORNER WHICH ELECTRONIC METAL LOCATOR AND COULD NOT FIND ANY EVIDENCE. SET HARRISON ON CENTERLINE OF HIGHWAY 23 OFF FENCE FROM SOUTH ACCORDING TO STATE HIGHWAY RIGHT OF WAY MAP. FIT TRANSIT TAPE TRAVERSE OF SECTION GOOD.

1981 - PLS UNKNOWN NO HIGHWAY SURVEY TIED OR RIGHT OF WAY PLAT REFERENCES WERE MADE TO THE LOCATION OF THIS CORNER.

2020 - PLS 2675 FOUND PK NAIL IN THE ROAD SURFACE, REMOVED, AND FOUND HARRISON (BROKEN-TOP) 12"± BELOW AND 2 TIES. THE MONUMENT AGREES WITH BOTH EXISTING TIES. ACCEPTED THE HARRISON (BROKEN-TOP) AS THE CORNER LOCATION. SET 4 NEW TIES AND MEASURED TO THE EXISTING TIES.



LOCATION
 (INDICATE CORNER BY "X")

SEAL:



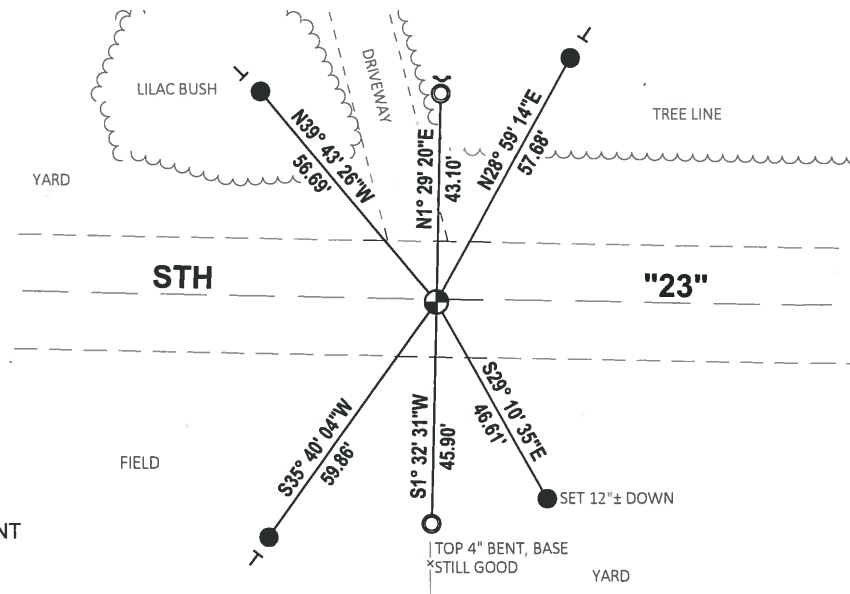
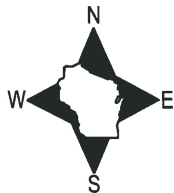
DATA SHOWN HERE ON THIS TIE SHEET IS CORRECT AND COMPLETE TO THE BEST OF MY KNOWLEDGE AND BELIEF.

PROFESSIONAL LAND SURVEYOR

DATE 5/28/2020

- TIE SKETCH

NOTE: THE CORNER LANDS 0.6'± SOUTH OF STH "23" CENTERLINE.



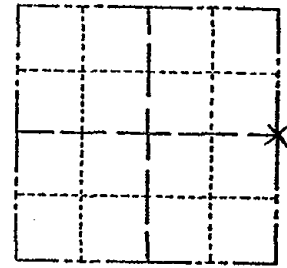
- SET 3/4" x 18" IRON REBAR, 1.50#/FT
- FOUND 1-1/4" O.D. IRON PIPE
- ⊙ FOUND HARRISON (BROKEN-TOP) MONUMENT
- ↘ STEEL FENCE POST
- └ VINYL "T" POST

ADAMS COUNTY

Survey Monument Record

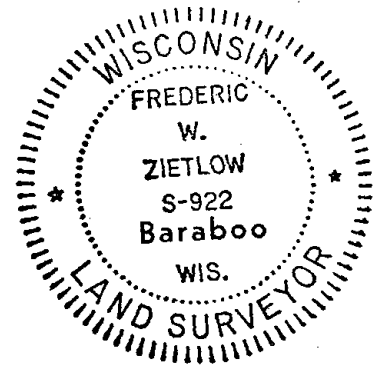
TYPE OF MONUMENT: 30" HARRISON
 STATE PLANE COORDINATES: N _____
 E _____
 ELEVATION — M.S.L. DATUM: _____
 THETA ANGLE: _____
 FIELD BOOK: _____ PAGE _____

CORNER NO. 766
 SECTION 33
 TOWN 14N
 RANGE 7E



LOCATION
(Indicated by 'X')

SEAL:



CERTIFIED CORRECT:

Frederic W. Zietlow

Registered Land Surveyor

DATE: JULY 31, 1975

BASIS FOR MONUMENT LOCATION

(Use reverse side if necessary)

Show info such as: History of corner, with reference to Vol. and pg, dates, surveyor; exact description of monument replaced; if location computed, by taped or EDM traverse; landowner remarks, etc.

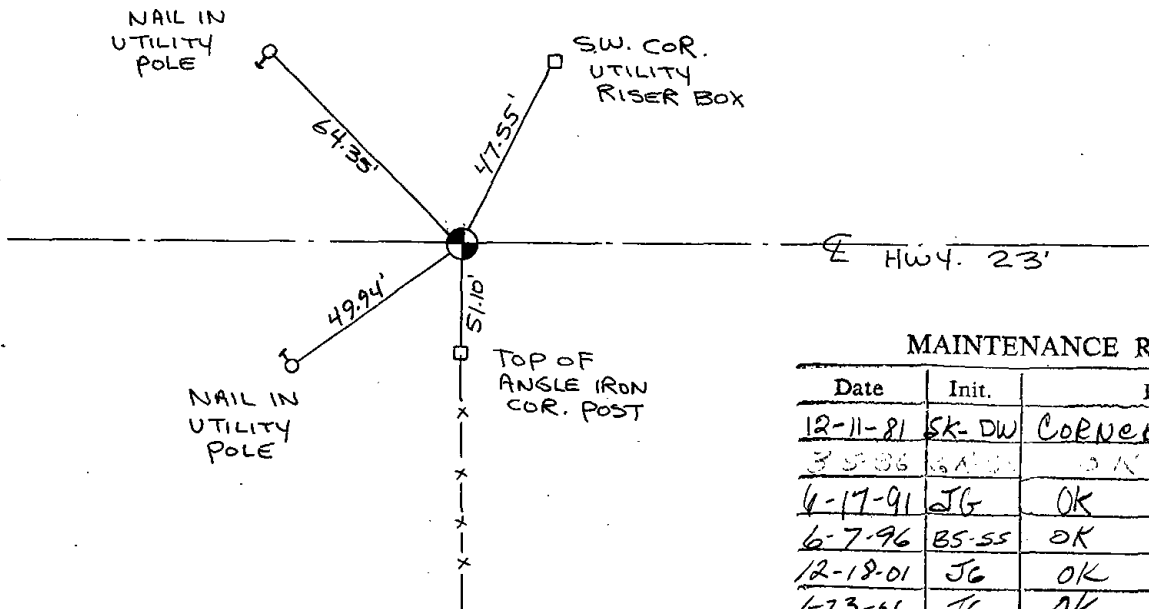
CHECKED CO. SURVEY RECORDS FOR RESURVEYS AND NONE WERE ON FILE. SEARCHED VICINITY OF CORNER WHICH ELECTRONIC METAL LOCATOR $\frac{1}{4}$ COULD NOT FIND ANY EVIDENCE. SET CORNER ON $\frac{1}{2}$ HWY. 23 OFF FENCE FROM SOUTH ACCORDING TO STATE HWY R/W MAP. FIT TRANSIT TAPE TRAVERSE OF SECTION GOOD.

CORNER O.K. 10-22-76 RW 55

TIE SKETCH

(Show at least four ties)

SEE REVISED TIE SHEET OF 9-23-81 D.O.T. FOR IRONS N 8 S



MAINTENANCE RECORD

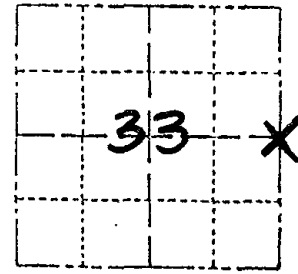
Date	Init.	Remarks
12-11-81	SK-DW	CORNERS O.K.
3-5-86	BA	OK
4-17-91	JG	OK
6-7-96	BS-SS	OK
12-18-01	JG	OK
1-23-06	T	OK

ADAMS COUNTY

CORNER NO. 766¹¹⁷
SECTION 33
TOWN 4N
RANGE 7E

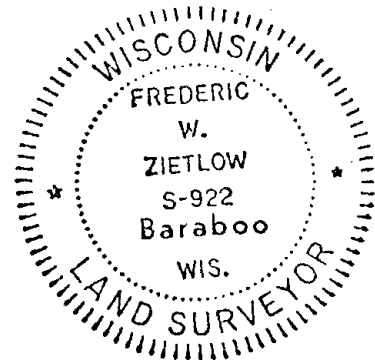
Survey Monument Record

TYPE OF MONUMENT: 30" HARRISON
STATE PLANE COORDINATES: N _____
E _____
ELEVATION — M.S.L. DATUM: _____
THETA ANGLE: _____
FIELD BOOK: _____ PAGE _____



LOCATION
(Indicated by 'X')

SEAL:



BASIS FOR MONUMENT LOCATION

(Use reverse side if necessary)

Show info such as: History of corner, with reference to Vol. and pg, dates, surveyor; exact description of monument replaced; if location computed, by taped or EDM traverse; landowner remarks, etc.

CHECKED CO. SURVEY RECORDS FOR RESURVEYS AND NONE WERE ON FILE. SEARCHED VICINITY OF CORNER WHICH ELECTRONIC METAL LOCATOR & COULD NOT FIND ANY EVIDENCE. SET CORNER ON E HWY. 23 OFF FENCE FROM SOUTH ACCORDING TO STATE HWY R/W MAP. FIT TRANSIT TAPE TRAVERSE OF SECTION GOOD.

No highway survey tied on R/W Plat references were made to the location of this corner. *R7n* 9-23-81

CERTIFIED CORRECT:

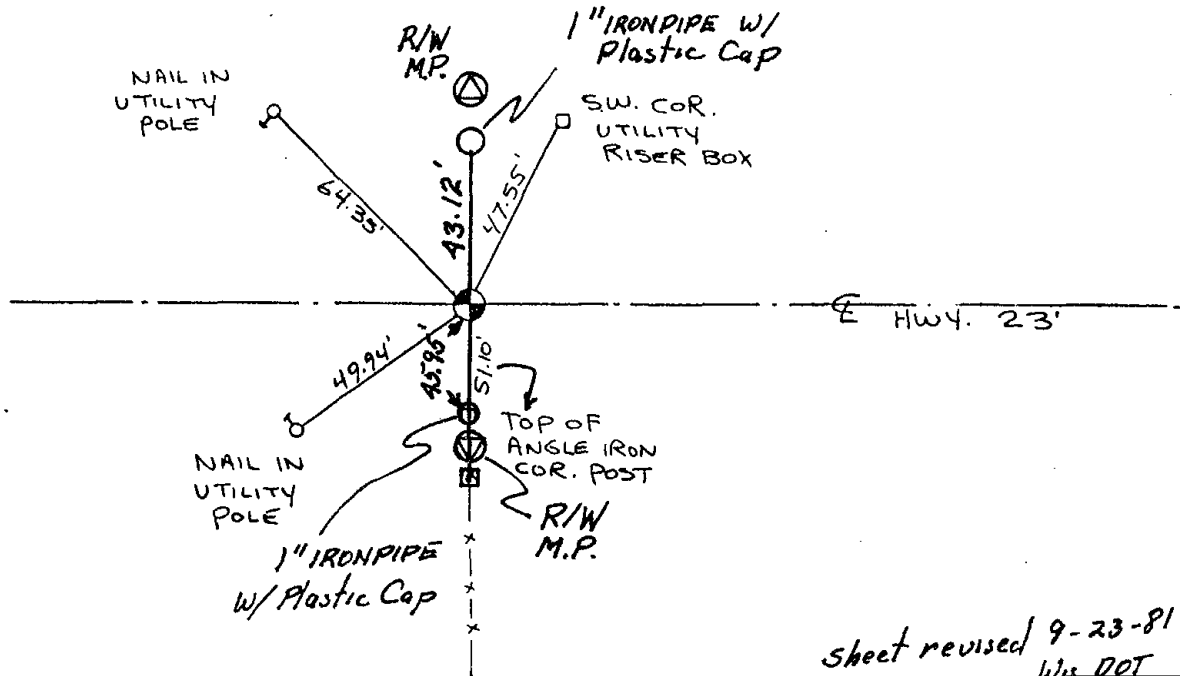
Frederic W. Zietlow
Registered Land Surveyor

DATE: July 31, 1975

TIE SKETCH

(Show at least four ties)

Iron pipes were set in line with Corner and Mark Post North.



sheet revised 9-23-81 *R7n*
Wls. DET