

PUBLIC LAND SURVEY MONUMENT RECORD

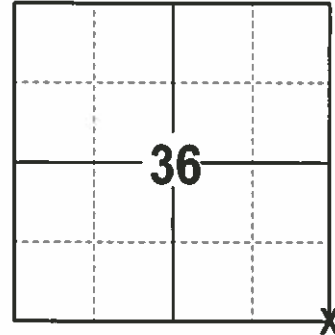
TYPE OF MONUMENT: HARRISON (BROKEN TOP)
 ADAMS COUNTY COORDINATES, NAD 83 (2007)

N. 100907.275

E. 557458.873

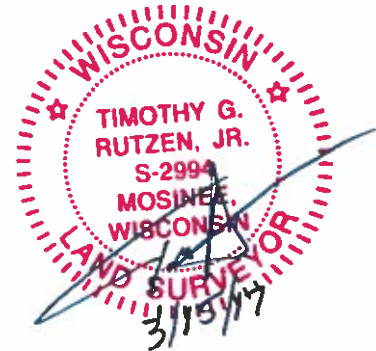
ELEVATION- - - DATUM - -

FIELD WORK DATE: 2/17/2017



LOCATION
 (INDICATE CORNER BY "X")

SEAL:



DATA SHOWN HERE ON THIS TIE SHEET IS CORRECT AND COMPLETE TO THE BEST OF MY KNOWLEDGE AND BELIEF.

PROFESSIONAL LAND SURVEYOR

DATE 3/15/17

BASIS FOR MONUMENT LOCATION

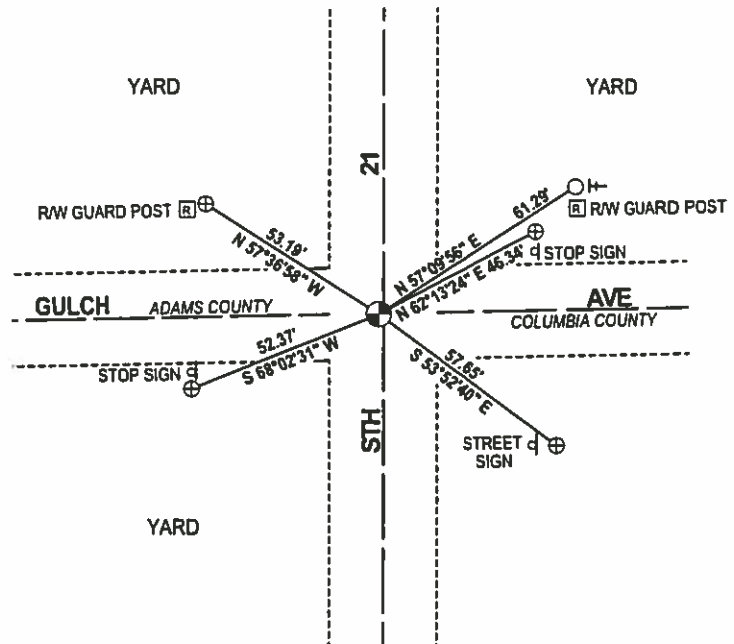
1975- PLS 922 SET A HARRISON, FOUND EXISTING PK SET OVER 3/4" LEAD PIPE. H.J. CORNING COLUMBIA COUNTY SURVEYOR CALLED FOR A GAS PIPE SET IN 1931. COULDN'T LOCATE CORNINGS WITNESS PIPES, MONUMENTED THIS AS CORNER. CORNER FELL 2± WEST OF A 12" LONG SPIKE WHICH HAS BEEN USED BY MID STATE ASSOCIATE SURVEYORS FOR VARIOUS SURVEYS SINCE 1962.

1998- PLS 1321 FOUND A HARRISON MONUMENT, AND SET 4 TIES.

2017 - PLS 2994 FOUND A HARRISON 18" BELOW SURVEY NAIL AT THE SURFACE AND 4 EXISTING TIES. HARRISON AGREES WITH TIES. ACCEPTED HARRISON AND REMEASURED TO THE 4 EXISTING TIES AND FOUND PROPERTY IRON.

- TIE SKETCH

NOTE: THE CORNER FALLS 1± WEST OF THE CENTERLINE OF STH 21.



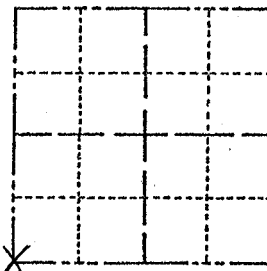
- 3/4" IRON ROD FOUND
- ⊕ 3/4" IRON ROD W/ALUMINUM CAP FOUND
- ⊙ HARRISON FOUND
- VINYL "T" POST
- ⇝ EXISTING STEEL POST

ADAMS COUNTY

Survey Monument Record

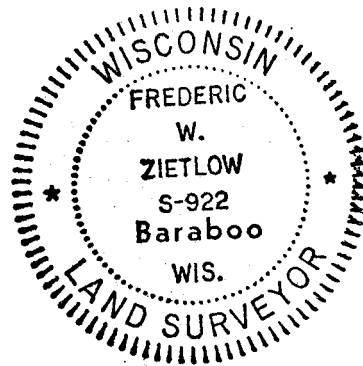
TYPE OF MONUMENT: 30" HARRISON
 STATE PLANE COORDINATES: N _____
 E _____
 ELEVATION — M.S.L. DATUM: _____
 THETA ANGLE: _____
 FIELD BOOK: _____ PAGE _____

CORNER NO. 772
 SECTION 31
 TOWN 14 N
 RANGE 7 E



LOCATION
(Indicated by 'X')

SEAL:



BASIS FOR MONUMENT LOCATION

(Use reverse side if necessary)

Show info such as: History of corner, with reference to Vol. and pg, dates, surveyor; exact description of monument replaced; if location computed, by taped or EDM traverse; landowner remarks, etc.

FOUND EXISTING PK NAIL SET OVER 3/4" LEAD PIPE. H.J. CORNING COLUMBIA Co. SURVEYOR CALLED FOR A GAS PIPE SET IN 1931. COULD NOT LOCATED CORNINGS WITNESS PIPES. MONUMENTED THIS AS COR. FELL 25' WEST OF 12" LONG SPIKE. THIS COR. HAS BEEN USED BY MID-STATE ASSOC. SURVEYORS FOR VARIOUS SURVEYS SINCE 1962.

CORNER O.K. 10-9-76 GR-SS
 " " 2-12-86 GR-SS
 CARLSON TIES OK 3-13-91 JG
 " " " 3-14-96 JG-SS
 " " " 12-18-01 JG
 " " " 1-23-06-JG

CERTIFIED CORRECT:

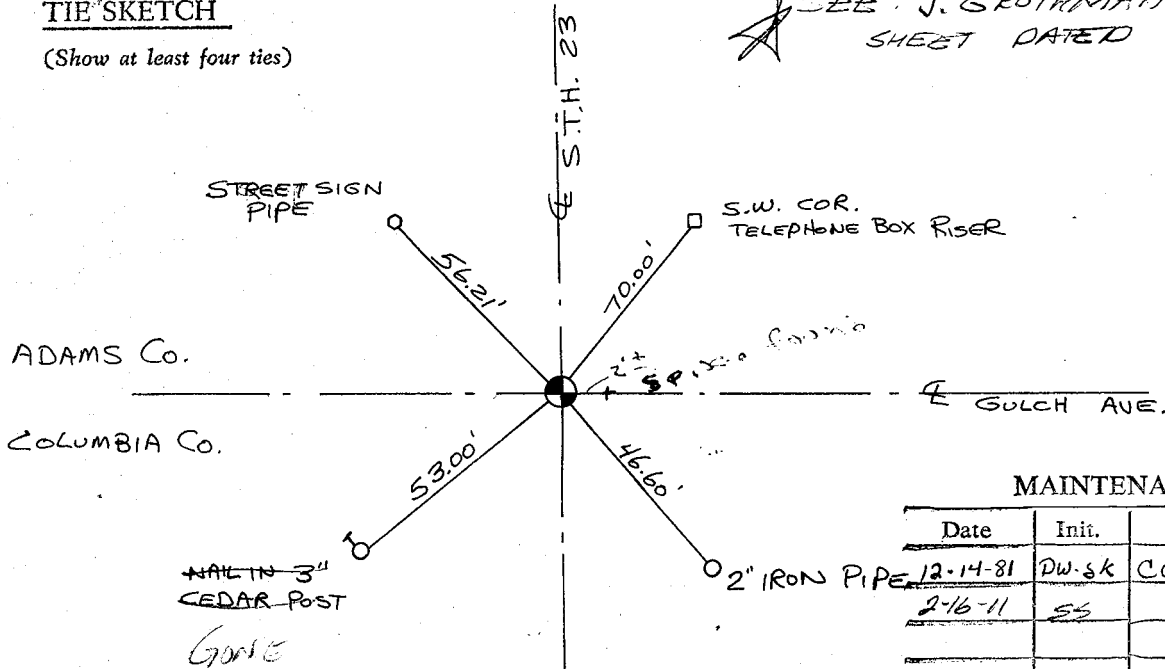
Frederic W. Zietlow
 Registered Land Surveyor

DATE: JULY 31, 1975

TIE SKETCH

(Show at least four ties)

SEE J. BROTHMAN TIE SHEET DATED 10-02-97



MAINTENANCE RECORD

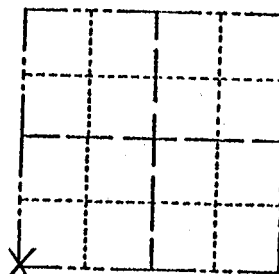
Date	Init.	Remarks
12-14-81	DW-sk	CORNER O.K
2-16-11	SS	OK

ADAMS COUNTY

CORNER NO. 772
 SECTION 31
 TOWN 14 N
 RANGE 7 E

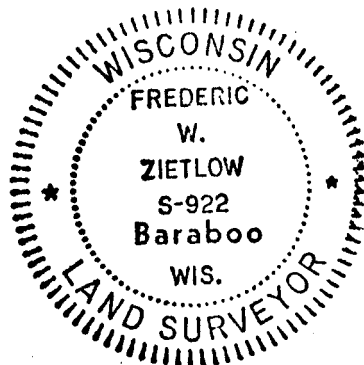
Survey Monument Record

TYPE OF MONUMENT: 30" HARRISON
 STATE PLANE COORDINATES: N _____
 E _____
 ELEVATION — M.S.L. DATUM: _____
 THETA ANGLE: _____
 FIELD BOOK: _____ PAGE _____



LOCATION
(Indicated by 'X')

SEAL:



BASIS FOR MONUMENT LOCATION

(Use reverse side if necessary)

Show info such as: History of corner, with reference to Vol. and pg, dates, surveyor; exact description of monument replaced; if location computed, by taped or EDM traverse; landowner remarks, etc.

FOUND EXISTING PK NAIL SET OVER 3/4" LEAD PIPE. H.J. CORNING COLUMBIA CO. SURVEYOR CALLED FOR A GAS PIPE SET IN 1931. COULD NOT LOCATED CORNINGS WITNESS PIPES. MONUMENTED THIS AS COR. Fell 2' WEST OF 12" LONG SPIKE. THIS COR. HAS BEEN USED BY MID-STATE ASSOC. SURVEYORS FOR VARIOUS SURVEYS SINCE 1962.

CORNER O.K. 10-9-76 GR-SS
 " " 2-12-86 GR-SS

CERTIFIED CORRECT:

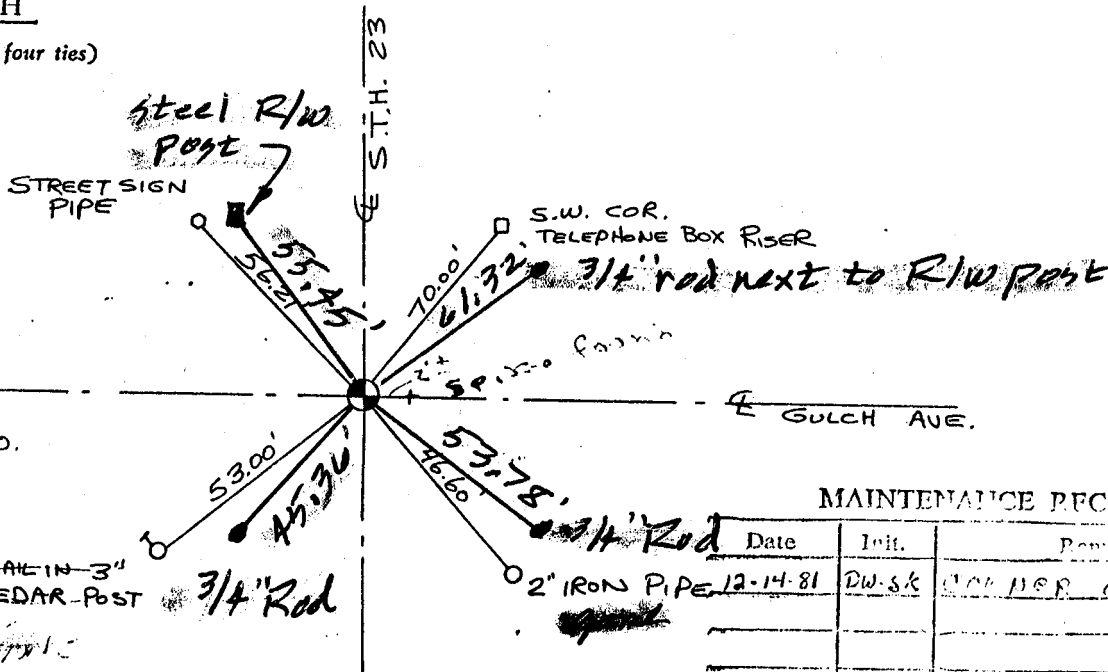
Frederic W. Zietlow
 Registered Land Surveyor

DATE: July 31, 1975

Ken Corbin Oct 12 '89

TIE SKETCH

(Show at least four ties)



MAINTENANCE RECORD

Date	Init.	Remarks
12-14-81	DW-SK	CORNER O.K.

U. S. PUBLIC LAND SURVEY MONUMENT RECORD

COLUMBIA COUNTY

INSTRUCTIONS: This record shall show the location of the corner and shall include all of the following nine elements (a through i).

(a) Identify the corner by reference to the U.S. public land survey system.

○ = Corner monument restored.

CORNER MONUMENT RESTORED WAS THE NE CORNER OF SECTION 1 T. 13 N., R. 6 E., TOWN OF NEWPORT, COL. CO.

CORNER HISTORY:

ORIGIN:

BY SURVEYOR(S) _____

DATE: _____

PERPETUATION: (PAGE, DATE & SURVEYOR)

VOL. I SEE PREVIOUS TIE SHEET

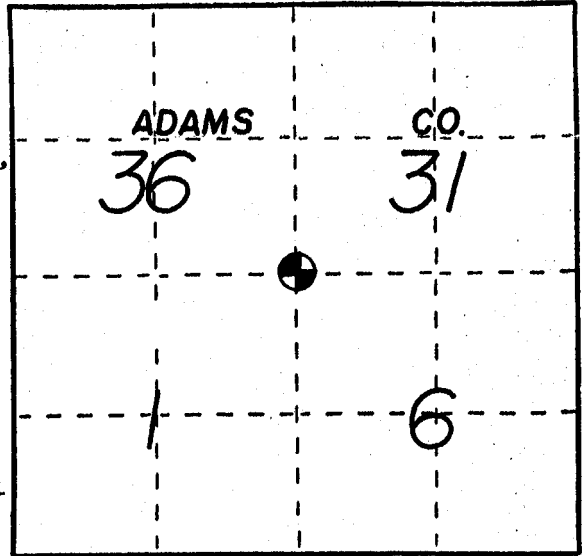
VOL. II _____

B. P. R. _____

FIELD BOOK _____

RECENT SURVEYS: (REF., DATE & SURVEYOR)

TIE SHEET BY FREDERIC W. ZIETLOW RLS DATED 7-31-79



(b) Describe any record evidence, monument evidence, occupational evidence, testimonial evidence or any other material evidence you considered, and whether the monument was found or placed.

EVIDENCE FOUND:

RECORD _____, MONUMENT X, OCCUPATIONAL _____, TESTIMONIAL _____, OTHER _____.

ORIGINAL CORNER MONUMENT LOCATION WAS N/A FOUND.

DESCRIPTION: FOUND ADAMS COUNTY MONUMENT AND SET FOUR (4)

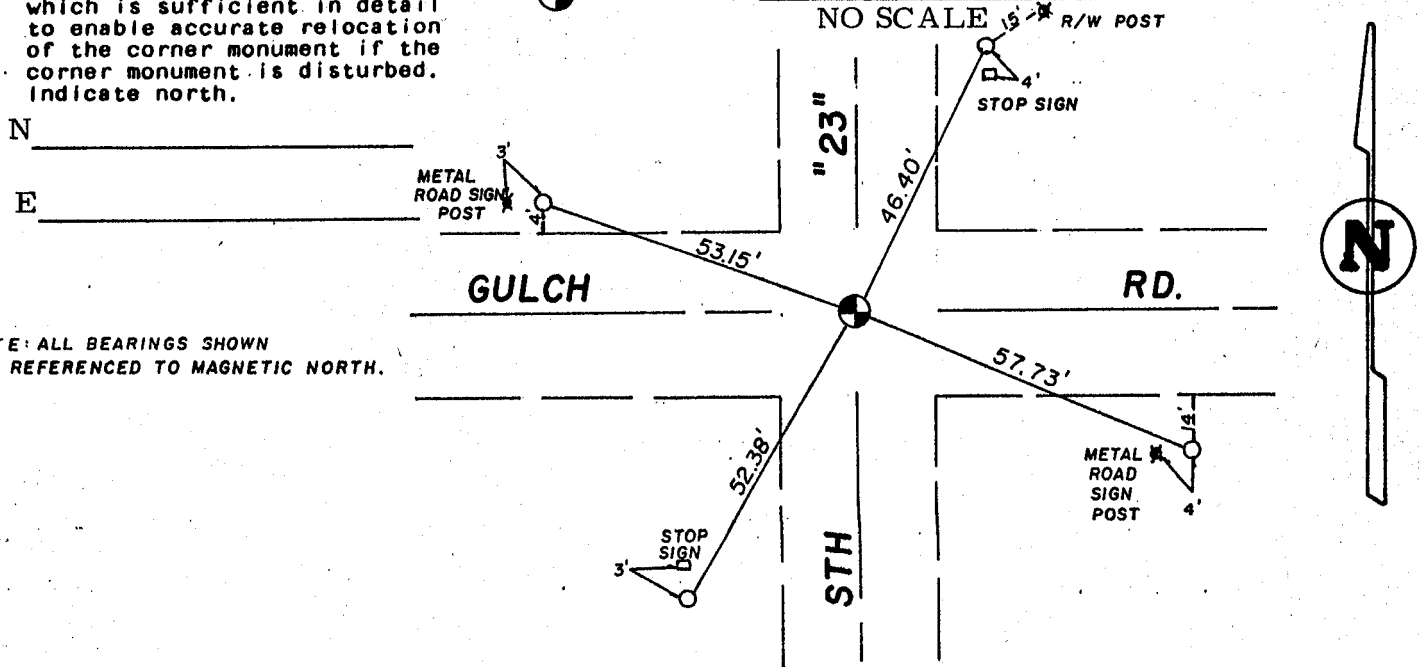
ADDITIONAL WITNESS MONUMENTS.

COLUMBIA COUNTY ALUMINUM WAS SET IN PLACE. (FOR ANY ADD'L INFO SEE BACK)

(c) In the plan view drawing below, provide reference ties to at least 4 witness monuments, or, if the location is within a municipality, to at least 2 witness monuments. (Witness monuments shall be made of concrete, natural stone, iron or other equally durable material.) Describe witness monuments.

(d) Show a plan view drawing depicting the relevant monuments and reference ties which is sufficient in detail to enable accurate relocation of the corner monument if the corner monument is disturbed. Indicate north.

- - ~~COLUMBIA COUNTY ALUM. MON. SET~~
- - 3/4" x 30" REBAR W/ALUM. WITNESS CAP SET
- - (OTHER) HARRISON MON. FND.



NOTE: ALL BEARINGS SHOWN ARE REFERENCED TO MAGNETIC NORTH.

DRAFTED BY CAE DATE 10/2/97 CORNER REF. A-25

(e) Describe any material discrepancy between the location of the corner as restored or reestablished and the location of that corner as previously restored or reestablished by distance and direction. Show the discrepancy on the plan view drawing under (d), above. Show the distances between the corner as previously restored or reestablished and (1) the corner as restored or reestablished, and (2) to at least 2 of the witness monuments shown on the drawing in (d), above.

FOUND: _____
SET BY: _____

JOB REF: _____

BEARS _____, _____ FROM CORNER MON. SET.

(f) Was the corner restored through acceptance of (1) an obliterated evidence location, or, (2) a found perpetuated location?

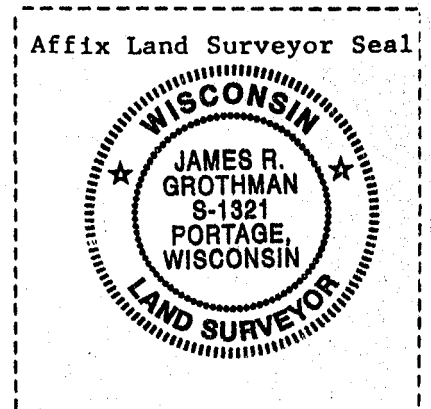
THIS CORNER WAS RESTORED THROUGH _____ N/A _____ LOCATION.

(g&h) Was the corner reestablished through lost corner proportionate methods? If so, show the method, including the directions and distances to other public land survey corners used as evidence or used for proportioning in determining the corner location?

BEARINGS REFERENCED TO _____ NO SCALE
DISTANCES ARE: _____ GRID _____ GROUND
GRID FACTOR: _____



picture taken; yes no



(i) I, JAMES R. GROTHMAN
(type or print name) certify that the corner location shown on this record was determined by me or under my direction and control and that this U.S. Public Land Survey Monument Record is correct and complete to the best of my knowledge and belief.

[Signature]
Signature

2.0 98