

31 SECTION 14 TOWN 07 RANGE

ADAMS COUNTY

COUNTY CORNER NO: 122
ROMPORTOL ID: 41407310020

PUBLIC LAND SURVEY MONUMENT RECORD

TYPE OF MONUMENT: HARRISON
ADAMS COUNTY COORDINATES, NAD 83 (2007)

N. 100916.240

E. 559828.538

ELEVATION- --- DATUM ---

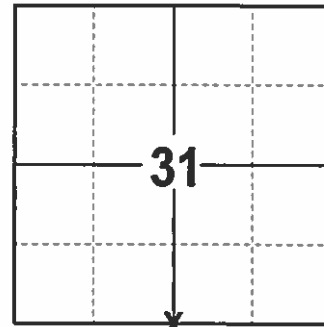
FIELD WORK DATE: 2/22/2017

BASIS FOR MONUMENT LOCATION

1975- PLS 922 SET A HARRISON, CHECKED ADAMS AND COLUMBIA COUNTY SURVEY RECORDS FOR RESURVEYS AND NONE WERE ON FILE IN EITHER COUNTY. FOUND PK NAIL USED AS CORNER FOR VARIOUS SURVEYS SINCE 1962 BY MID STATE ASSOCIATES. EXCAVATED AREA AND FOUND AN OLD 1"X20" IRON PIPE 8" BELOW THE ROAD SURFACE AND MONUMENTED SAME.

2001- PLS 1321 FOUND A HARRISON MONUMENT, AND SET 4 TIES.

2017 - PLS 2994 FOUND A HARRISON 6" BELOW SURFACE AND 4 EXISTING TIES. HARRISON AGREES WITH TIES AND PROPERTY IRONS FROM PRIOR SURVEYS. ACCEPTED HARRISON AND REMEASURED TO THE EXISTING TIES AND PROPERTY IRONS FOR ADDITIONAL TIES.



LOCATION
(INDICATE CORNER BY "X")

SEAL:



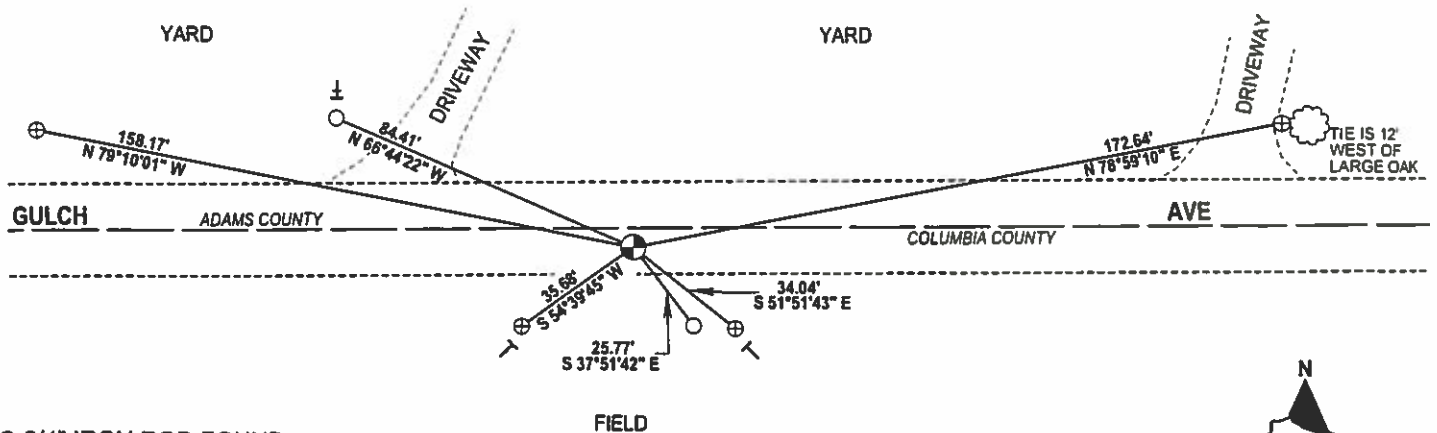
DATA SHOWN HERE ON THIS TIE SHEET IS CORRECT AND COMPLETE TO THE BEST OF MY KNOWLEDGE AND BELIEF.

PROFESSIONAL LAND SURVEYOR

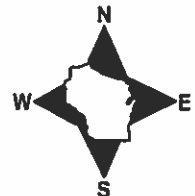
DATE 3/15/17

- TIE SKETCH

NOTE: THE CORNER FALLS 5'± SOUTH OF THE CENTERLINE OF GULCH AVE AND 315'± WEST OF THE CENTER LINE OF LARSON DRIVE.



- 3/4" IRON ROD FOUND
- ⊕ 3/4" IRON ROD W/ALUMINUM CAP FOUND
- ⊙ HARRISON FOUND
- VINYL "T" POST
- EXISTING STEEL POST

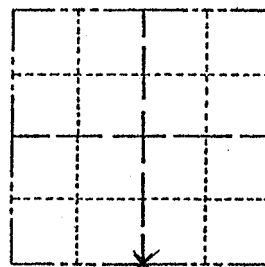


ADAMS COUNTY

Survey Monument Record

TYPE OF MONUMENT: 30" HARRISON
STATE PLANE COORDINATES: N
E
ELEVATION - M.S.L. DATUM:
THETA ANGLE:
FIELD BOOK: PAGE

CORNER NO. 771
SECTION 31
TOWN 14N
RANGE 7E



LOCATION (Indicated by 'X')

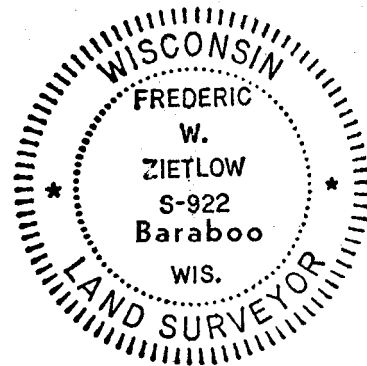
BASIS FOR MONUMENT LOCATION

(Use reverse side if necessary)

Show info such as: History of corner, with reference to Vol. and pg, dates, surveyor; exact description of monument replaced; if location computed, by taped or EDM traverse; landowner remarks, etc.

CHECKED CO. SURVEY RECORDS FOR RESURVEYS & NONE WERE ON FILE IN EITHER ADAMS OR COLUMBIA COUNTIES. FOUND PK NAIL USED AS CORNER FOR VARIOUS SURVEYS SINCE 1962 BY MID-STATE ASSOC. WE EXCAVATED AND FOUND AN OLD 1" X 20" IRON PIPE DOWN 8" BELOW SURFACE & MONUMENTED SAME

SEAL:



- CORNER O.K. 10-9-76 GR-SS
" " 2-12-86 CR-SS
ALL OK 3-13-91 JG
" " 3-14-96 JG-SS
" " 12-18-01-JG
" " 1-23-06-JG
2-16-11 SS OK

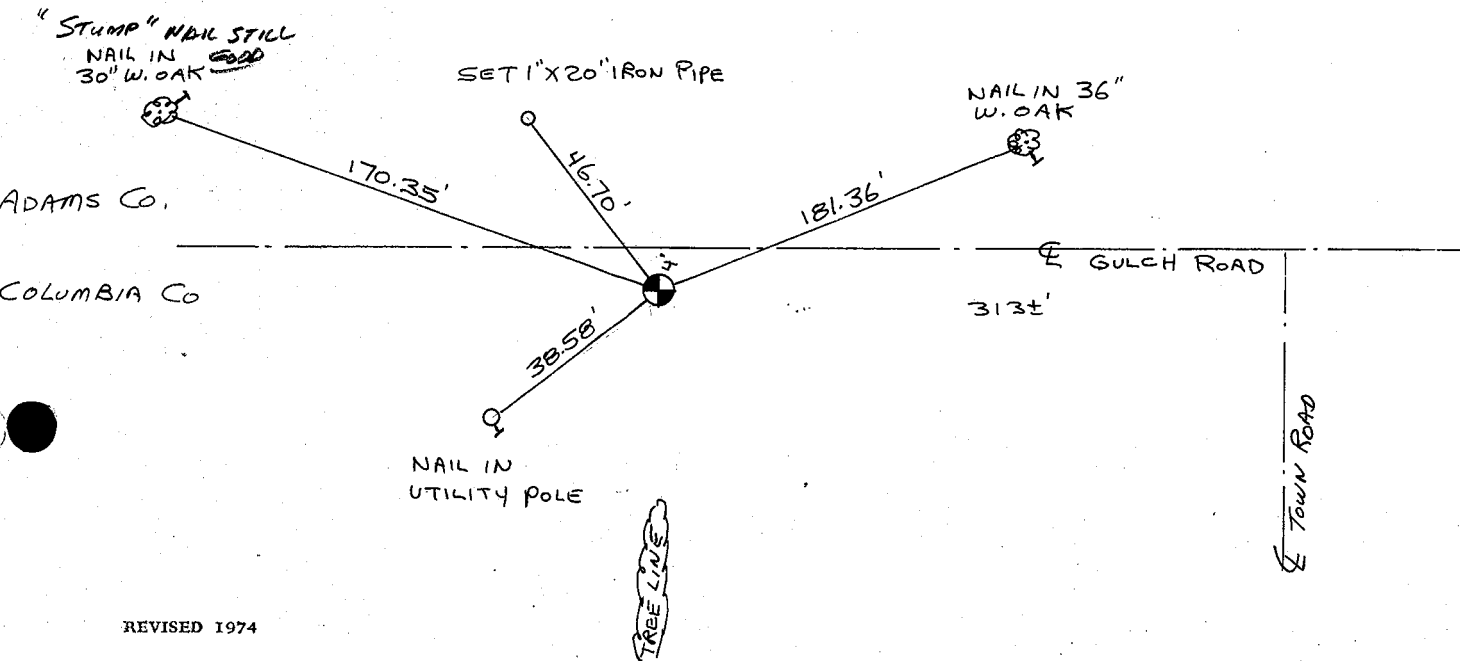
CERTIFIED CORRECT:

Frederic W. Zietlow
Registered Land Surveyor
DATE: July 31, 1975

TIE SKETCH

(Show at least four ties)

SEE J. GROTHMAN TIE SHEET DATED 02-08-00



U. S. PUBLIC LAND SURVEY MONUMENT RECORD

COLUMBIA COUNTY

INSTRUCTIONS: This record shall show the location of the corner and shall include all of the following nine elements (a through i).

(a) Identify the corner by reference to the U. S. public land survey system.

○ - Corner monument restored.

CORNER MONUMENT RESTORED WAS THE

N1/4 CORNER OF SECTION 6, T. 13 N., R. 7 E., TOWN OF NEWPORT, COL. CO.

CORNER HISTORY:

ORIGIN:

BY SURVEYOR(S) _____

DATE: _____

PERPETUATION: (PAGE, DATE & SURVEYOR)

VOL. I SEE PREVIOUS TIE SHEET

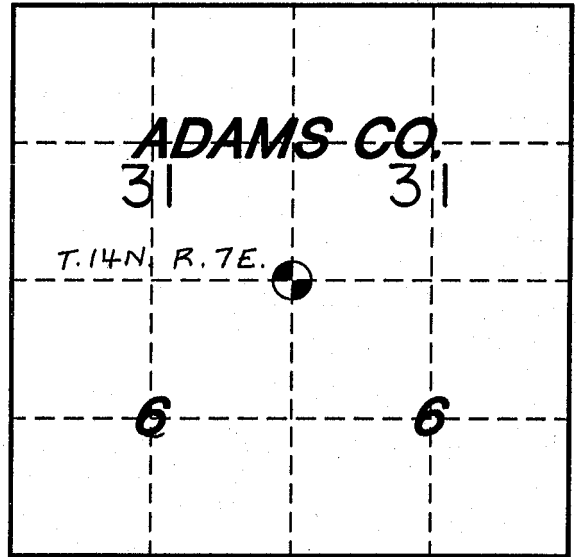
VOL. II _____

B.P.R. _____

FIELD BOOK _____

RECENT SURVEYS: (REF., DATE & SURVEYOR)

TIE SHEET BY FREDERIC W. ZIETLOW, RLS. DATED 7-31-75



(b) Describe any record evidence, monument evidence, occupational evidence, testimonial evidence or any other material evidence you considered, and whether the monument was found or placed.

EVIDENCE FOUND:

RECORD , MONUMENT ✓, OCCUPATIONAL , TESTIMONIAL , OTHER .

ORIGINAL CORNER MONUMENT LOCATION WAS N/A FOUND.

DESCRIPTION: FOUND HARRISON MONUMENT. SET FOUR WITNESS MONUMENTS.

ALSO ESTABLISHED GPS COORDINATE VALUES. SEE COMPOSITE MAP IN LAND RECORDS OFFICE.

COLUMBIA COUNTY MONUMENT SET IN PLACE. (FOR ANY ADD'L INFO SEE BACK)

(c) In the plan view drawing below, provide reference ties to at least 4 witness monuments, or, if the location is within a municipality, to at least 2 witness monuments. (Witness monuments shall be made of concrete, natural stone, iron or other equally durable material.)

Describe witness monuments:

(d) Show a plan view drawing depicting the relevant monuments and reference ties which is sufficient in detail to enable accurate relocation of the corner monument if the corner monument is disturbed. Indicate north.

⊕ - COLUMBIA COUNTY MONUMENT SET - 1"x30" REBAR WITH ALUMINUM CAP

○ - 3/4"x30" REBAR W/ALUM. WITNESS CAP SET

● - (OTHER) FOUND ALUM. WITNESS MONUMENT

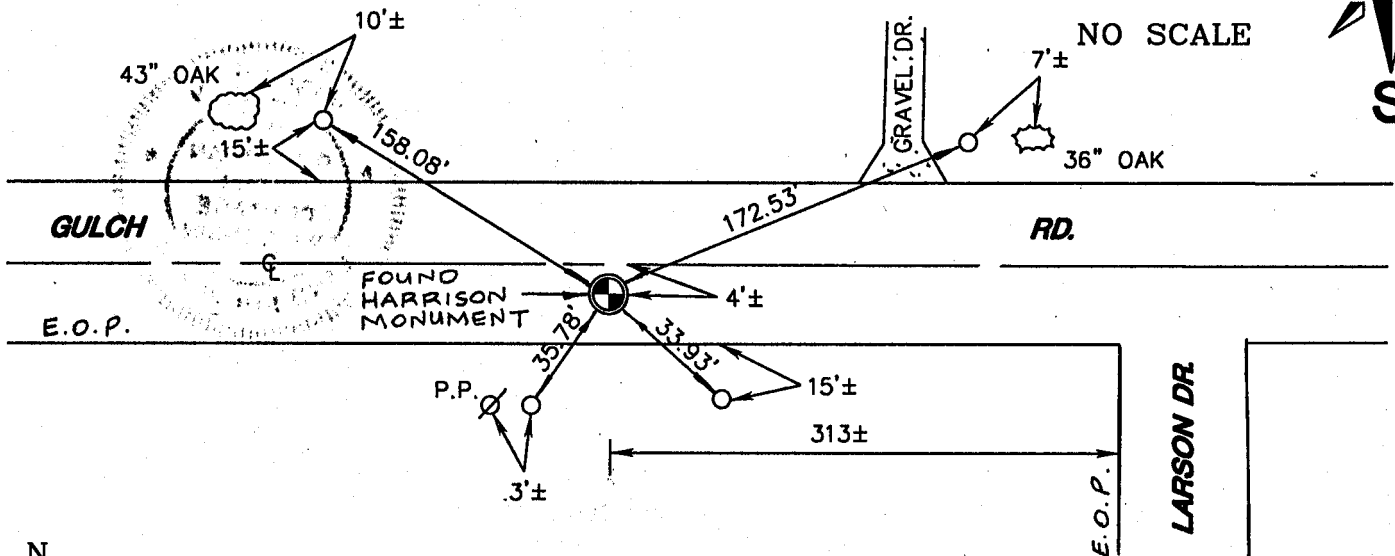
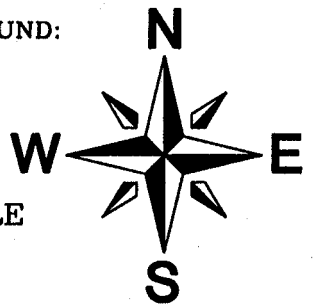
⊕ - COLUMBIA COUNTY MONUMENT FOUND:

ALUMINUM MONUMENT

REBAR WITH CAP

ALUMINUM CAP IN CONCRETE

OTHER _____



N _____

E _____

DRAFTED BY C.A.E. DATE 2/8/00 CORNER REF. A-3

(e) Describe any material discrepancy between the location of the corner as restored or reestablished and the location of that corner as previously restored or reestablished by distance and direction. Show the discrepancy on the plan view drawing under (d), above. Show the distances between the corner as previously restored or reestablished and (1), the corner as restored or reestablished, and (2), to at least 2 of the witness monuments shown on the drawing in (d), above.

FOUND: _____
SET BY: _____
JOB REF: _____
BEARS _____, _____ FROM CORNER MON. SET.

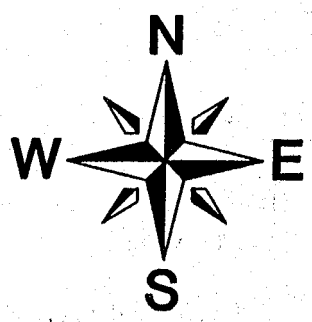
(f) Was the corner restored through acceptance of (1), an obliterated evidence location, or (2), a found perpetuated location?

THIS CORNER WAS RESTORED THROUGH FOUND PERPETUATED LOCATION.

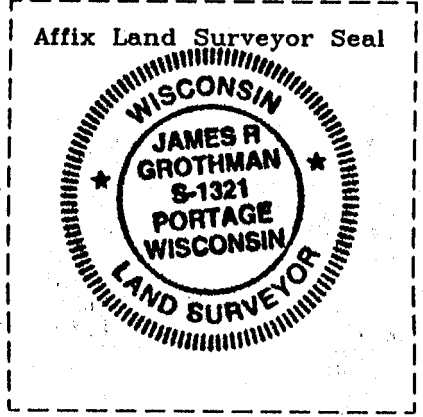
(g&h) Was the corner reestablished through lost corner proportionate methods? If so, show the method, including the directions and distances to other public land survey corners used as evidence or used for proportioning in determining the corner location?

BEARINGS REFERENCED TO _____
DISTANCES ARE: _____ GRID _____ GROUND
GRID FACTOR: _____

NO SCALE



picture taken: yes no



(i) I, JAMES R. GROTHMAN
(type of print name) certify that the corner location shown on this record was determined by me or under my direction and control and that this U.S. Public Land Survey Monument Record is correct and complete to the best of my knowledge and belief.
James R. Grothman _____ 2/05/01
Signature Date