

PUBLIC LAND SURVEY MONUMENT RECORD

TYPE OF MONUMENT: 1" IRON ROD W/COLUMBIA COUNTY ALUMINUM CAP
ADAMS COUNTY COORDINATES, NAD 83 (2007)

N. 100928.196

E. 565143.679

ELEVATION- DATUM

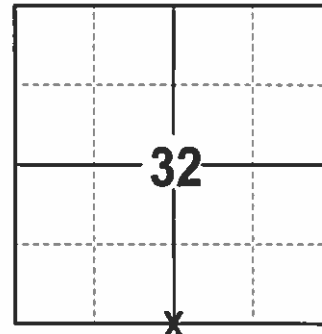
FIELD WORK DATE: 2/17/2017

BASIS FOR MONUMENT LOCATION

1975- PLS 922 RECOVERED A POINTED SANDSTONE 25" BELOW SURFACE, AND FLAT STONE ORIGINALLY SET BY C.E. CORNING COLUMBIA COUNTY SURVEYOR IN 1893. SEE BLUE PRINT NO. 30 OF COLUMBIA COUNTY SURVEY RECORDS. ON 7/8/1975, WITH COOPERATION OF ADAMS AND COLUMBIA COUNTY SURVEYORS EXCAVATED AREA AND FOUND CORNER.

2001- PLS 1321 FOUND A 1" IRON ROD IN CONCRETE, SET ALUMINUM MONUMENT CAP OVER 1" IRON ROD, AND SET 4 TIES.

2017 - PLS 2994 FOUND A 1" IRON ROD W/ALUMINUM CAP 6 INCHES BELOW SURFACE AND 4 TIES. 1" IRON ROD W/ALUMINUM CAP AGREES WITH TIES. ACCEPTED 1" IRON ROD W/ALUMINUM CAP AND REMEASURED TO THE EXISTING TIES.



LOCATION
(INDICATE CORNER BY "X")

SEAL:



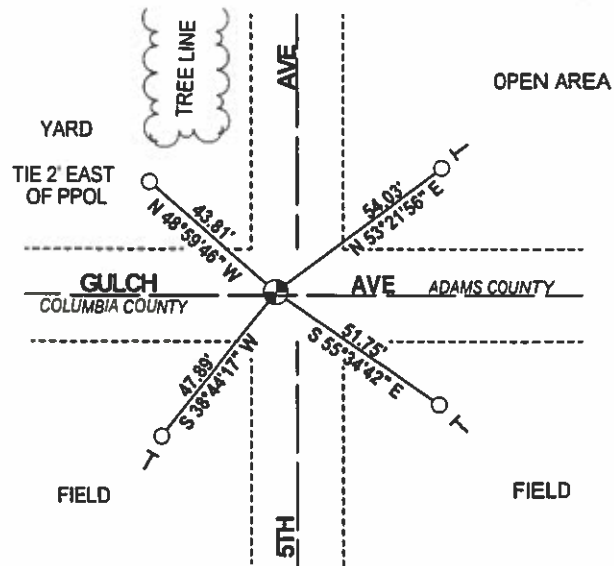
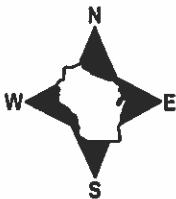
DATA SHOWN HERE ON THIS TIE SHEET IS CORRECT AND COMPLETE TO THE BEST OF MY KNOWLEDGE AND BELIEF.

PROFESSIONAL LAND SURVEYOR

DATE 3/15/17

- TIE SKETCH

NOTE: THE CORNER FALLS 1'± NORTH OF THE CENTERLINE OF GULCH AVE AND 5'± WEST OF THE CENTERLINE OF 5TH AVE.



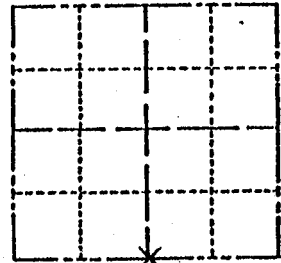
- 3/4" IRON ROD W/ALUMINUM CAP FOUND
- ⊕ 1" IRON ROD W/COLUMBIA COUNTY ALUMINUM CAP
- VINYL "T" POST

ADAMS COUNTY

Survey Monument Record

TYPE OF MONUMENT: POINTED SANDSTONE
STATE PLANE COORDINATES: N. _____
E. _____
ELEVATION — M.S.L. DATUM: _____
THETA ANGLE: _____
FIELD BOOK: _____ PAGE _____

CORNER NO. 516⁽¹²⁴⁾
SECTION 32
TOWN 14N
RANGE 7E



LOCATION
(Indicated by 'X')

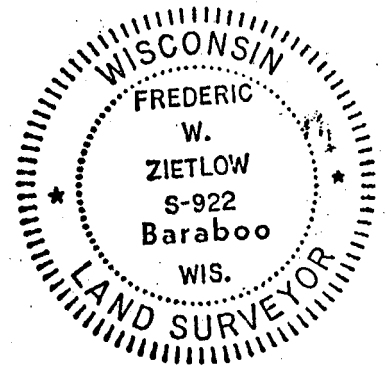
BASIS FOR MONUMENT LOCATION

(Use reverse side if necessary)

Show info such as: History of corner, with reference to Vol. and pg. dates, surveyor; exact description of monument replaced; if location computed, by taped or EDM traverse; landowner remarks, etc.

RECOVERED POINTED SANDSTONE DOWN 25"
FROM ROAD SURFACE, AND FLAT STONE
ORIGINALLY SET BY C.E. CORNING COLUMBIA
Co. SURVEYOR IN 1893. SEE BLUE PRINT
NO. 30 OF COLUMBIA Co. SURVEY RECORDS.
ON 7-8-75 WITH THE COOPERATION OF
ADAMS & COLUMBIA Co. SURVEYORS
WE EXCAVATED AND FOUND THIS CORNER

SEAL:



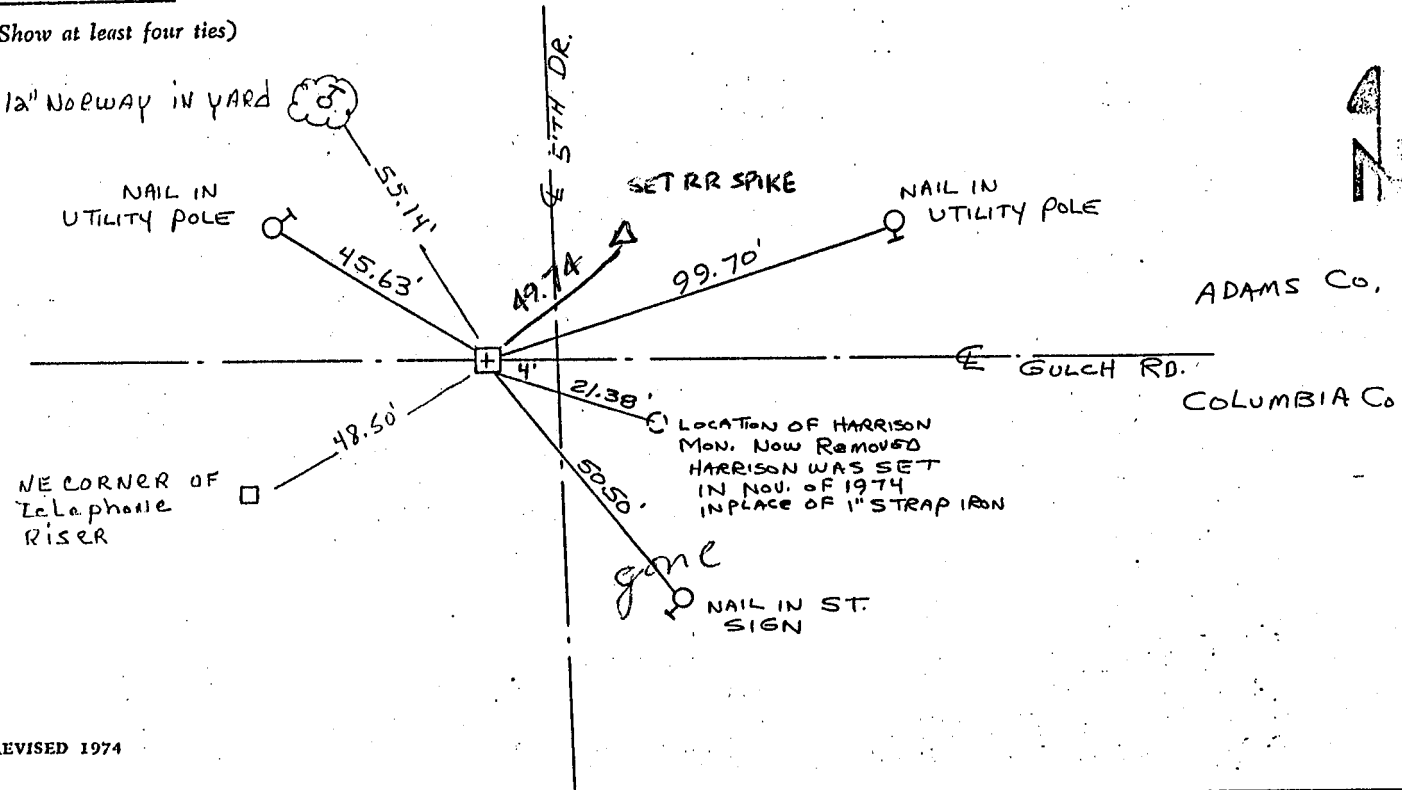
CERTIFIED CORRECT:

Frederic W. Zietlow
Registered Land Surveyor
DATE: JULY 31, 1975

NEW TIE 4-22-97 SH-BF
OK 2-12-66 G.L.S.
CORNER O.K. 10-9-76 GR-SS

TIE SKETCH

(Show at least four ties)



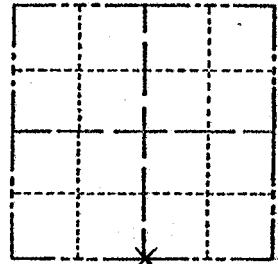
REVISED 1974

ADAMS COUNTY

Survey Monument Record

TYPE OF MONUMENT: POINTED SANDSTONE
STATE PLANE COORDINATES: N. _____
E. _____
ELEVATION — M.S.L. DATUM: _____
THETA ANGLE: _____
FIELD BOOK: _____ PAGE _____

CORNER NO. 516⁽¹²⁴⁾
SECTION 32
TOWN 14N
RANGE 7E



LOCATION
(Indicated by 'X')

SEAL:



BASIS FOR MONUMENT LOCATION

(Use reverse side if necessary)

Show info such as: History of corner, with reference to Vol. and pg, dates, surveyor; exact description of monument replaced; if location computed, by taped or EDM traverse; landowner remarks, etc.

RECOVERED POINTED SANDSTONE DOWN 25"
FROM ROAD SURFACE AND FLAT STONE
ORIGINALLY SET BY C.E. CORNING COLUMBIA
CO. SURVEYOR IN 1893. SEE BLUE PRINT
NO. 30 OF COLUMBIA CO. SURVEY RECORDS.
ON 7-8-75 WITH THE COOPERATION OF
ADAMS & COLUMBIA CO. SURVEYORS
WE EXCAVATED AND FOUND THIS CORNER

SEE J. GROTHMAN TIE
SHEET DATED 8-12-99

CERTIFIED CORRECT:

Frederick W. Zietlow
Registered Land Surveyor

DATE: JULY 31, 1975

CORNER OK 2-12-66 CR-4
OK 10-9-76 GR-55

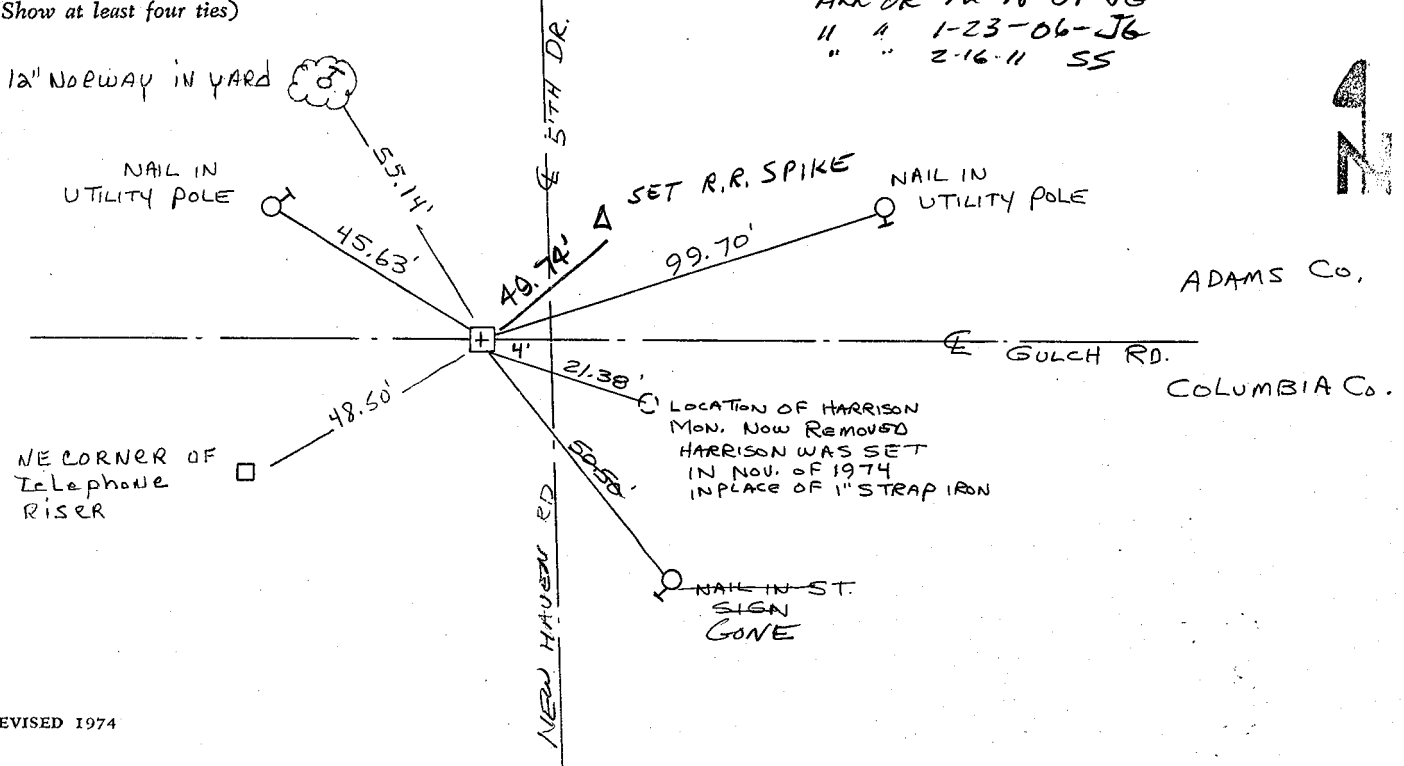
TIE SKETCH

1-GONE CORNER OK 3-13-91 JG
" " 3-14-96 JG SS

NEW TIE 4-22-97 SH-BF

(Show at least four ties)

ALL OK 12-18-01 JG
" " 1-23-06-JG
" " 2-16-11 SS



U. S. PUBLIC LAND SURVEY MONUMENT RECORD

COLUMBIA COUNTY

INSTRUCTIONS:

This record shall show the location of the corner and shall include all of the following nine elements (a through i).

- (a) Identify the corner by reference to the U. S. public land survey system.

○ - Corner monument restored.

CORNER MONUMENT RESTORED WAS THE
 N1/4 CORNER OF
 SECTION 5, T. 13 N., R. 7 E.,
 TOWN OF NEWPORT, COL. CO.

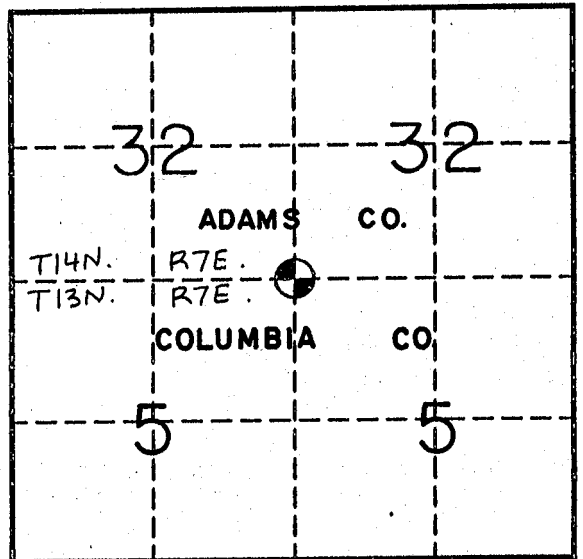
CORNER HISTORY:
ORIGIN:
 BY SURVEYOR(S) _____
 DATE: _____

PERPETUATION: (PAGE, DATE & SURVEYOR)
 VOL. I SEE PREVIOUS TIE SHEET
 VOL. II _____

B.P.R. _____
FIELD BOOK _____

RECENT SURVEYS: (REF., DATE & SURVEYOR)

TIE SHEET BY LARRY R. BREWSTER, RLS. DATED 10-10-75



- (b) Describe any record evidence, monument evidence, occupational evidence, testimonial evidence or any other material evidence you considered, and whether the monument was found or placed.

EVIDENCE FOUND:

RECORD , MONUMENT , OCCUPATIONAL , TESTIMONIAL , OTHER .

ORIGINAL CORNER MONUMENT LOCATION WAS N/A FOUND.

DESCRIPTION: FOUND 1" IRON ROD IN CONCRETE. SET ALUM. MONUMENT CAP OVER 1" IRON ROD. SET FOR WITNESS MONUMENTS.

ALSO ESTABLISHED GPS COORDINATE VALUES. SEE COMPOSITE MAP IN LAND RECORDS OFFICE.

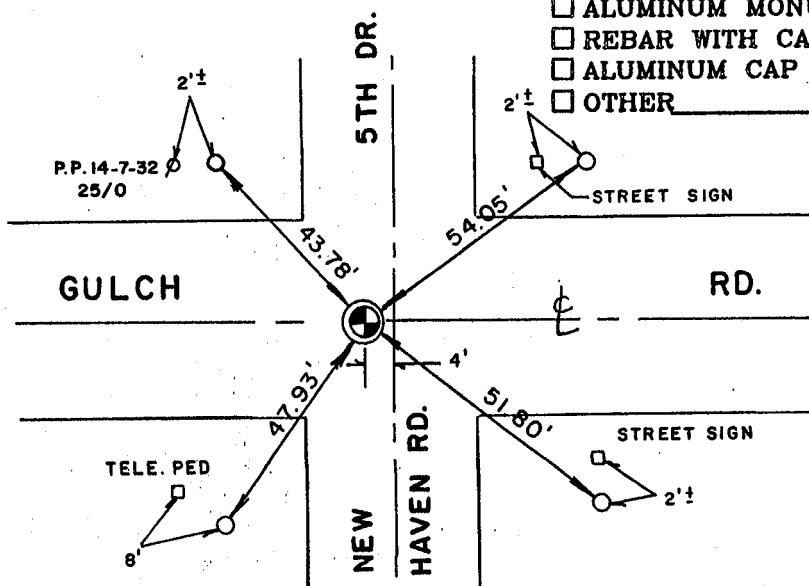
COLUMBIA COUNTY MONUMENT SET IN PLACE. (FOR ANY ADD'L INFO SEE BACK)

- (c) In the plan view drawing below, provide reference ties to at least 4 witness monuments, or, if the location is within a municipality, to at least 2 witness monuments. (Witness monuments shall be made of concrete, natural stone, iron or other equally durable material.)

Describe witness monuments:

- (d) Show a plan view drawing depicting the relevant monuments and reference ties which is sufficient in detail to enable accurate relocation of the corner monument if the corner monument is disturbed. Indicate north.

- COLUMBIA COUNTY MONUMENT SET - 1"x30" REBAR WITH ALUMINUM CAP
- 3/4"x30" REBAR W/ALUM. WITNESS CAP SET (OTHER) _____
- COLUMBIA COUNTY MONUMENT FOUND:
 - ALUMINUM MONUMENT
 - REBAR WITH CAP
 - ALUMINUM CAP IN CONCRETE
 - OTHER _____



NO SCALE

NOTE: SET ALUM. CAP ON EXISTING 1" ROD IN CONCRETE.

N _____
 E _____

DRAFTED BY C.A.E. DATE 8/12/99 CORNER REF. A-7

(e) Describe any material discrepancy between the location of the corner as restored or reestablished and the location of that corner as previously restored or reestablished by distance and direction. Show the discrepancy on the plan view drawing under (d), above. Show the distances between the corner as previously restored or reestablished and (1), the corner as restored or reestablished, and (2), to at least 2 of the witness monuments shown on the drawing in (d), above.

FOUND: _____

SET BY: _____

JOB REF: _____

BEARS _____ FROM CORNER MON. SET.

(f) Was the corner restored through acceptance of (1), an obliterated evidence location, or (2), a found perpetuated location?

THIS CORNER WAS RESTORED THROUGH FOUND PERPETUATED LOCATION.

(g&h) Was the corner reestablished through lost corner proportionate methods? If so, show the method, including the directions and distances to other public land survey corners used as evidence or used for proportioning in determining the corner location?

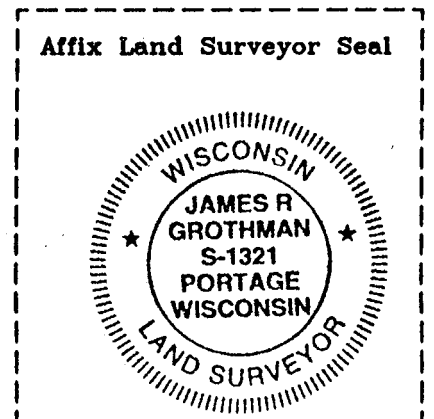
BEARINGS REFERENCED TO _____
DISTANCES ARE: _____ GRID _____ GROUND
GRID FACTOR: _____

NO SCALE



picture taken: yes no

Affix Land Surveyor Seal



(i) I, James R. Grothman
(type or print name) certify that the corner location shown on this record was determined by me or under my direction and control and that this U.S. Public Land Survey Monument Record is correct and complete to the best of my knowledge and belief.

Signature

Date