

33 SECTION 14 TOWN 07 RANGE

ADAMS COUNTY

COUNTY CORNER NO: 127
 ROMPORTOL ID: 41407330000

PUBLIC LAND SURVEY MONUMENT RECORD

TYPE OF MONUMENT: COLUMBIA COUNTY ALUMINUM CAP IN CONCRETE
 ADAMS COUNTY COORDINATES, NAD 83 (2007)

N. 100852.746

E. 573094.203

ELEVATION- DATUM

FIELD WORK DATE: 2/16/2017

BASIS FOR MONUMENT LOCATION

1976- PLS 922 SET A 6" ALUMINUM CAP IN CONCRETE. THIS CORNER WAS SET BY LARRY BREWSTER ON 9/15/1976. I MET WITH BREWSTER AND SAW REMNANTS OF C.E. CORNING'S WOOD STAKE AT THIS LOCATION. REMNANTS HAD 3 STONES AROUND IT. SEE COLUMBIA COUNTY SURVEY RECORDS BLUE PRINT NO. 1 MAY 12, 1902.

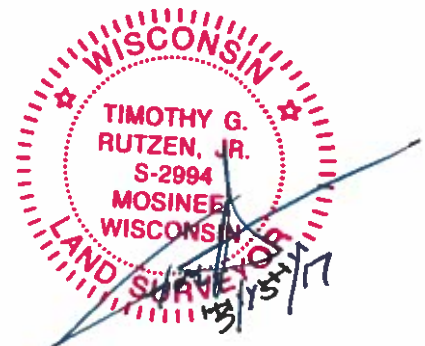
2001- PLS 1321 FOUND A 6" ALUMINUM CAP IN CONCRETE AND SET 4 TIES.

2017 - PLS 2994 FOUND A 6" ALUMINUM CAP IN CONCRETE AND 4 EXISTING TIES. 6" ALUMINUM CAP IN CONCRETE AGREES WITH THE 4 TIES, ACCEPTED CORNER, AND REMEASURED TO THE EXISTING TIES.



LOCATION
(INDICATE CORNER BY "X")

SEAL:



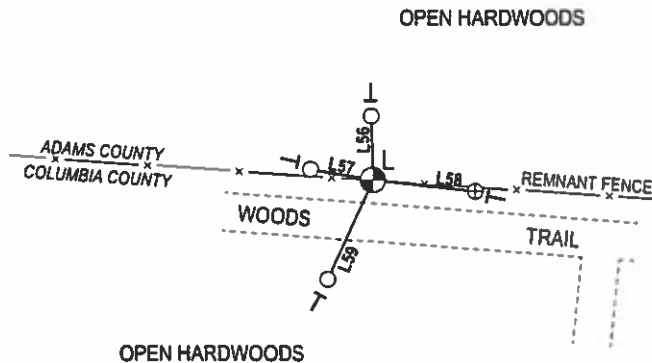
DATA SHOWN HERE ON THIS TIE SHEET IS CORRECT AND COMPLETE TO THE BEST OF MY KNOWLEDGE AND BELIEF.

PROFESSIONAL LAND SURVEYOR

DATE 3/15/17

- TIE SKETCH -

NOTE: THE CORNER FALLS 6½' NORTH OF TRAIL.



- ⊕ ALUMINUM CAP IN CONCRETE FOUND
- 3/4" IRON ROD W/ALUMINUM CAP FOUND
- ⊙ COLUMBIA COUNTY ALUMINUM CAP IN CONCRETE
- VINYL "T" POST
- ┌ FIBERGLASS "T" POST

LINE	BEARING	DISTANCE
L56	N 01°23'43" W	16.63'
L57	N 80°14'27" W	16.38'
L58	S 83°45'58" E	26.82'
L59	S 24°23'14" W	28.39'

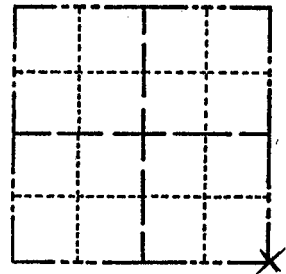
ADAMS COUNTY

Survey Monument Record

TYPE OF MONUMENT: 6" ALUMINUM CAP SET IN CONCRETE
 STATE PLANE COORDINATES: N _____
 E _____

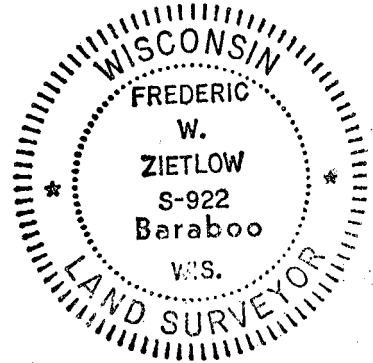
ELEVATION — M.S.L. DATUM: _____
 THETA ANGLE: _____
 FIELD BOOK: _____ PAGE _____

CORNER NO. 127
 SECTION 33
 TOWN 14N
 RANGE 7E



LOCATION
(Indicated by 'X')

SEAL:



BASIS FOR MONUMENT LOCATION

(Use reverse side if necessary)

Show info such as: History of corner, with reference to Vol. and pg. dates, surveyor; exact description of monument replaced; if location computed, by taped or EDM traverse; landowner remarks, etc.

THIS CORNER WAS SET BY LARRY BREWSTER. ON 9-15-76 I MET WITH BREWSTER AND SAW REMNANTS OF C.E. CORNINGS WOOD STAKE AT THIS LOCATION. REMNANTS HAD 3 STONES AROUND IT. SEE COLUMBIA COUNTY SURVEY RECORDS BLUE PRINT No. 1 MAY 12, 1902

CERTIFIED CORRECT:

Frederic W. Zietlow

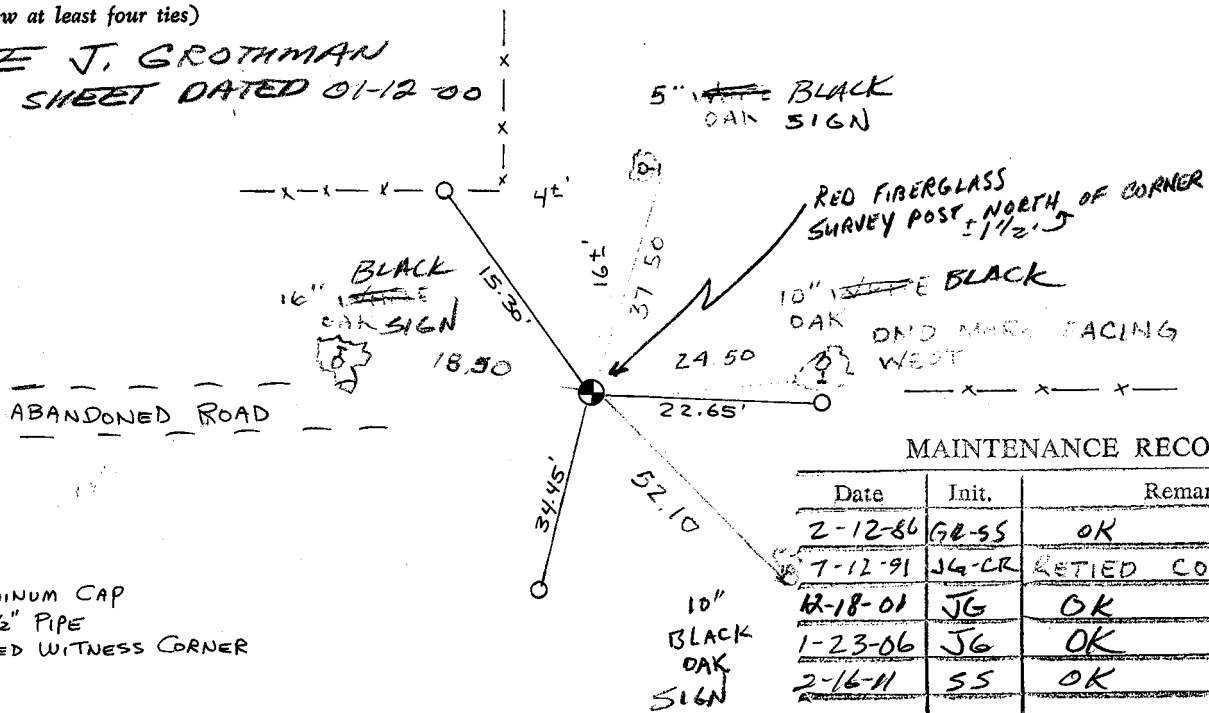
Registered Land Surveyor

DATE: 12-29-76

TIE SKETCH

(Show at least four ties)

SEE J. GROTHMAN TIE SHEET DATED 01-12-80



O = ALUMINUM CAP
 IN 2 1/2" PIPE
 MARKED WITNESS CORNER

MAINTENANCE RECORD

Date	Init.	Remarks
2-12-86	GB-SS	OK
7-12-91	J4-LR	RETIED CORNER
12-18-01	JG	OK
1-23-06	JG	OK
2-16-11	SS	OK

U. S. PUBLIC LAND SURVEY MONUMENT RECORD

COLUMBIA COUNTY

INSTRUCTIONS: This record shall show the location of the corner and shall include all of the following nine elements (a through i).

(a) Identify the corner by reference to the U. S. public land survey system.

○ - Corner monument restored.

CORNER MONUMENT RESTORED WAS THE

NE CORNER OF SECTION 4, T. 13 N., R. 7 E., TOWN OF LEWISTON, COL. CO.

CORNER HISTORY:

ORIGIN:

BY SURVEYOR(S) _____

DATE: _____

PERPETUATION: (PAGE, DATE & SURVEYOR)

VOL. I SEE PREVIOUS TIE SHEET

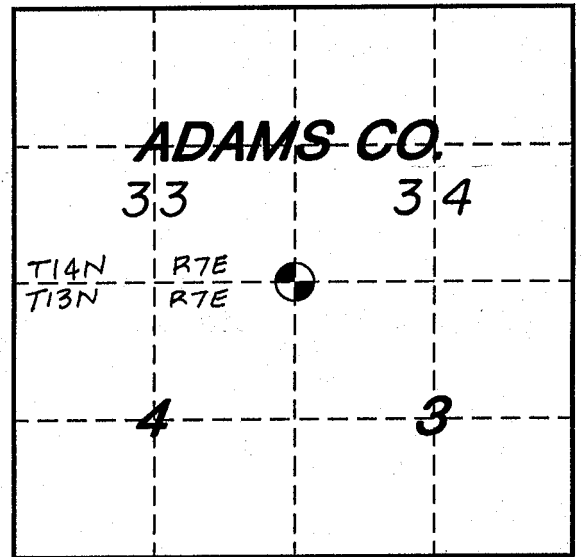
VOL. II _____

B.P.R. _____

FIELD BOOK _____

RECENT SURVEYS: (REF., DATE & SURVEYOR)

TIE SHEET BY LARRY R. BREWSTER, RLS. DATED 10-4-79



(b) Describe any record evidence, monument evidence, occupational evidence, testimonial evidence or any other material evidence you considered, and whether the monument was found or placed.

EVIDENCE FOUND:

RECORD _____, MONUMENT , OCCUPATIONAL _____, TESTIMONIAL _____, OTHER _____.

ORIGINAL CORNER MONUMENT LOCATION WAS N/A FOUND.

DESCRIPTION: FOUND ALUM. MONUMENT IN 6" CONCRETE CYLINDER. SET FOUR WITNESS MONUMENTS.

ALSO ESTABLISHED GPS COORDINATE VALUES. SEE COMPOSITE MAP IN LAND RECORDS OFFICE.

COLUMBIA COUNTY MONUMENT SET IN PLACE. (FOR ANY ADD'L INFO SEE BACK)

(c) In the plan view drawing below, provide reference ties to at least 4 witness monuments, or, if the location is within a municipality, to at least 2 witness monuments. (Witness monuments shall be made of concrete, natural stone, iron or other equally durable material.)

Describe witness monuments:

(d) Show a plan view drawing depicting the relevant monuments and reference ties which is sufficient in detail to enable accurate relocation of the corner monument if the corner monument is disturbed. Indicate north.

- COLUMBIA COUNTY MONUMENT SET - 1"x30" REBAR WITH ALUMINUM CAP

- 3/4"x30" REBAR W/ALUM. WITNESS CAP SET

- (OTHER) FOUND ALUM. WITNESS MONUMENT

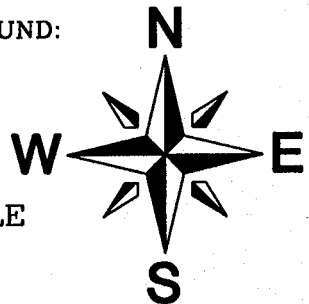
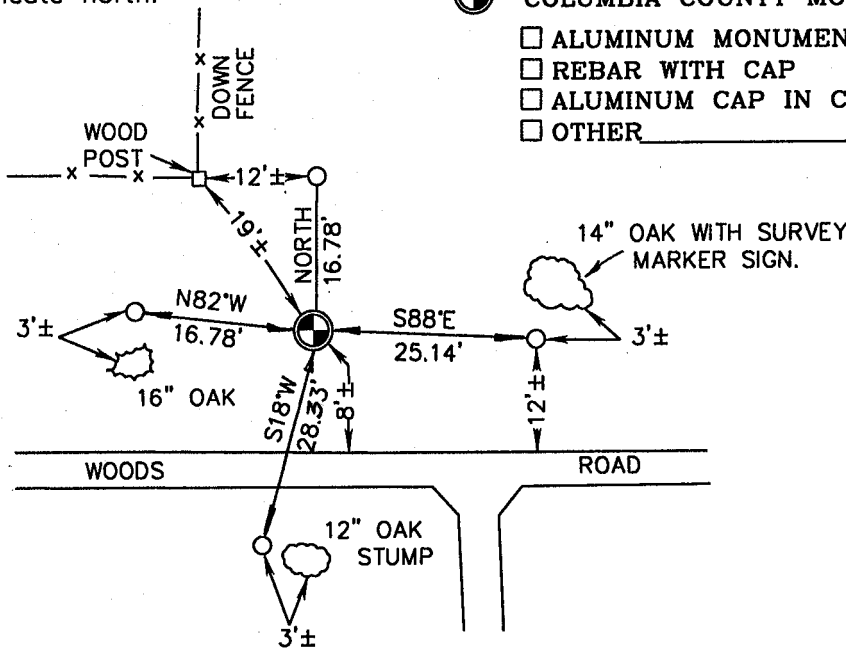
- COLUMBIA COUNTY MONUMENT FOUND:

ALUMINUM MONUMENT

REBAR WITH CAP

ALUMINUM CAP IN CONCRETE

OTHER _____



NO SCALE

N _____

E _____

DRAFTED BY C.A.E. DATE 1/12/00 CORNER REF. A-13

(e) Describe any material discrepancy between the location of the corner as restored or reestablished and the location of that corner as previously restored or reestablished by distance and direction. Show the discrepancy on the plan view drawing under (d), above. Show the distances between the corner as previously restored or reestablished and (1), the corner as restored or reestablished, and (2), to at least 2 of the witness monuments shown on the drawing in (d), above.

FOUND: _____

SET BY: _____

JOB REF: _____

BEARS _____, _____ FROM CORNER MON. SET.

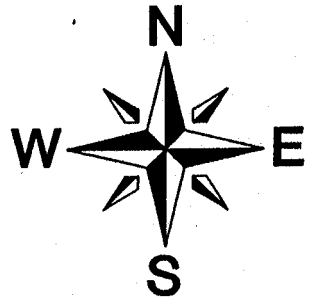
(f) Was the corner restored through acceptance of (1), an obliterated evidence location, or (2), a found perpetuated location?

THIS CORNER WAS RESTORED THROUGH FOUND PERPETUATED LOCATION.

(g&h) Was the corner reestablished through lost corner proportionate methods? If so, show the method, including the directions and distances to other public land survey corners used as evidence or used for proportioning in determining the corner location?

BEARINGS REFERENCED TO _____
DISTANCES ARE: _____ GRID _____ GROUND
GRID FACTOR: _____

NO SCALE



picture taken: yes no

Affix Land Surveyor Seal



(i) I, James R. Grothman
(type or print name) certify that the corner location shown on this record was determined by me or under my direction and control and that this U.S. Public Land Survey Monument Record is correct and complete to the best of my knowledge and belief.

James R. Grothman _____ 9/05/01
Signature Date