

PUBLIC LAND SURVEY MONUMENT RECORD

TYPE OF MONUMENT: **COLUMBIA COUNTY ALUMINUM MONUMENT**
ADAMS COUNTY COORDINATES, NAD 83 (2007)

N. 100796.486

E. 575751.276

ELEVATION- _____ DATUM _____

FIELD WORK DATE: 2/16/2017

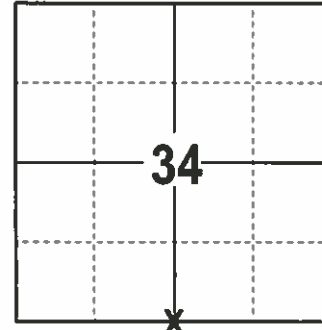
BASIS FOR MONUMENT LOCATION

1983- PLS 1444 SET A 2"x84" IRON PIPE W/ALUMINUM CAP EQUIDISTANT AND ON LINE BETWEEN ADJACENT SECTION CORNERS. NO EVIDENCE OR SURVEYS ON RECORD OF THE ORIGINAL CORNER.

1984- PLS 1321 A NEW LOCATION WAS PERPETUATED BY ORIGINAL EVIDENCE FOUND IN THE FIELD. ORIGINAL CORNER WAS FOUND BY C.E. CORNING IN 1889 FROM STUMPS OF BOTH GOVERNMENT TREES AND TOOK NEW BEARINGS TO A 3" TAMARACK N83°W, 0.04 AND A 4" TAMARACK N77°E 0.38. PLS 1321 FOUND DECAYED STUMPS LEFT OF THESE BEARING TREES BUT FAILED TO FIND THE ORIGINAL STAKE AS FOUND IN 1889. ALSO, CHECKED C.E. CORNING'S DISTANCE TO THE EAST (2652.93' RECORDED 2654.65' MEASURED), ALSO FOUND OCCUPATIONAL EVIDENCE WHICH SUBSTANTIATED THIS LOCATION. FOUND 2" IRON PIPE WITH ALUMINUM CAP SET BY PLS 1444 IN 1983 TO BEAR N6°E, 16.32'. PLS 1444 CONSIDERED THIS CORNER LOST AND RESET PER LOST METHODS AS PER TIE SHEET NO. 128, IN ADAMS COUNTY SURVEY RECORDS. DECISION WAS TO SET A 2" X 60" ALUMINUM PIPE WITH CAP AT RECORD DISTANCE FROM FOUND BEARING TREE REMAINS. SET 4 NEW TIES.

2001- PLS 1321 FOUND COLUMBIA COUNTY MONUMENT AND 4 TIES IN GOOD CONDITION.

2017 - PLS 2994 FOUND BOTH CORNER MONUMENTS AND 4 EXISTING TIES. ALL SURVEYS OF RECORD HAVE BEEN USING THE COLUMBIA COUNTY MONUMENT RATHER THAN THE ADAMS COUNTY MONUMENT. COLUMBIA COUNTY MONUMENT AGREES WITH THE 4 EXISTING TIES. ACCEPTED COLUMBIA COUNTY ALUMINUM MONUMENT AS THE TRUE CORNER AND REMEASURED TO THE EXISTING TIES.



LOCATION
(INDICATE CORNER BY "X")

SEAL:



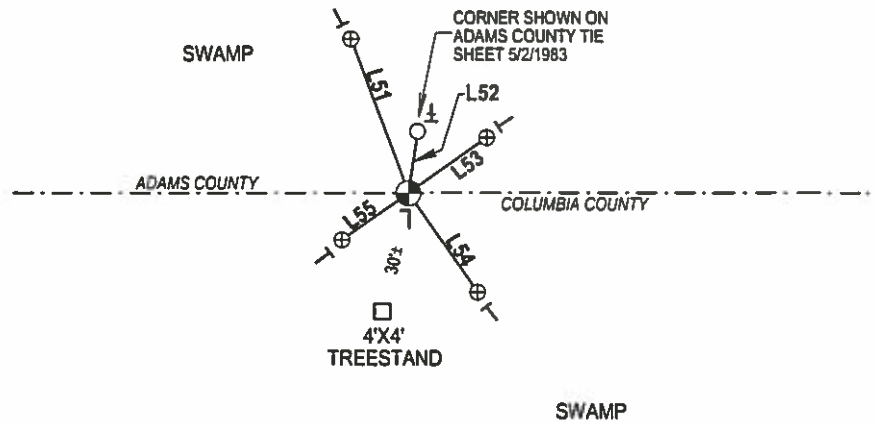
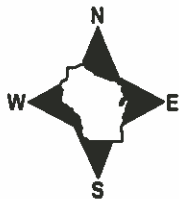
DATA SHOWN HERE ON THIS TIE SHEET IS CORRECT AND COMPLETE TO THE BEST OF MY KNOWLEDGE AND BELIEF.

PROFESSIONAL LAND SURVEYOR

DATE 3/15/17

- TIE SKETCH -

NOTE: THE CORNER FALLS 90°± NORTHEAST OF END OF TRAIL.



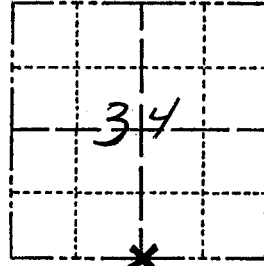
- 2" OD IRON PIPE WITH ALUMINUM CAP FOUND
- ⊕ ALUMINUM WITNESS MONUMENT FOUND
- ⊗ COLUMBIA COUNTY ALUMINUM MONUMENT FOUND
- VINYL "T" POST
- ┌ FIBERGLASS "T" POST
- EXISTING STEEL POST

LINE	BEARING	DISTANCE
L51	N 20°19'25" W	42.71'
L52	N 08°29'41" E	16.27'
L53	N 54°41'15" E	25.09'
L54	S 35°08'47" E	31.40'
L55	S 54°42'14" W	21.09'

Government Land Corner Certificate

ADAMS County
 TYPE OF MONUMENT: 2" x 7' IRON PIPE / ALUM CAP
 STATE PLANE COORDINATES: N _____
 E _____
 ELEVATION — M.S.L. DATUM: _____
 THETA ANGLE: _____
 FIELD BOOK: 91 PAGE 75
 DRAWN BY: LANCE HABECK

CORNER NO. 128
 SECTION 34
 TOWN 14
 RANGE 7



LOCATION
(Indicated by 'X')

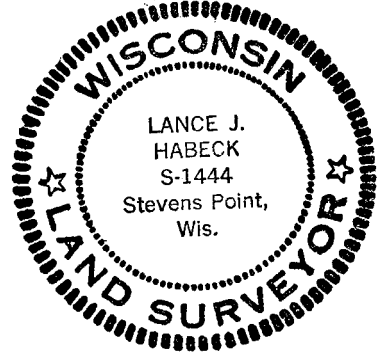
BASIS FOR MONUMENT LOCATION

Show info such as: History of corner, with reference to Vol. and pg., dates, surveyor; exact description of monument replaced; if location computed, by taped or EDM traverse; landowner remarks, etc. (Use reverse side if necessary)

This corner was set equidistant and on line between adjacent section corners.

No evidence of the original corner found.
 No resurveys on record.

SEAL:



DATA SHOWN HERE ON
 CERTIFIED CORRECT:

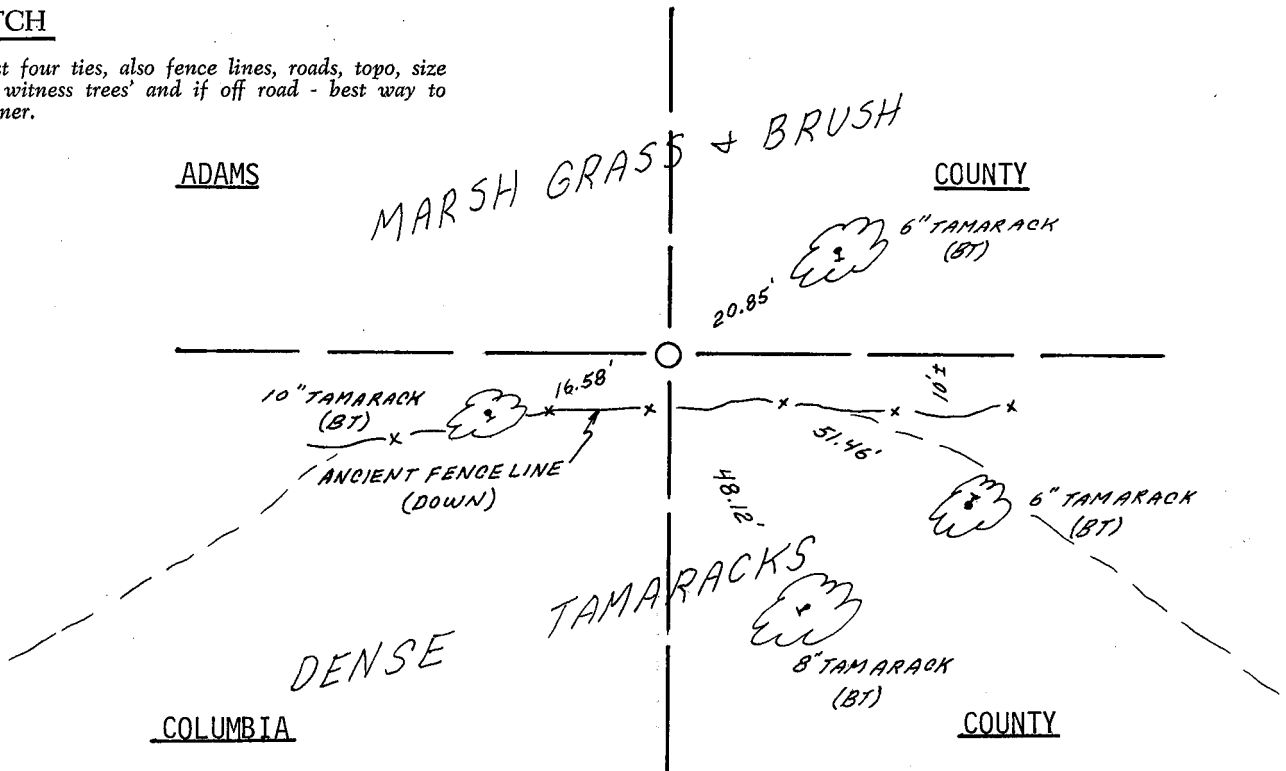
Lance J. Habeck
 Registered Land Surveyor

DATE: 5/2/83

filed for record this 8th
 day of JUNE, 1983
 per 59.60 Wisconsin Statutes.
L. Rhinehart
 ADAMS COUNTY SURVEYOR

TIE SKETCH

Show at least four ties, also fence lines, roads, topo, size and type of witness trees and if off road - best way to arrive at corner.



U. S. PUBLIC LAND SURVEY MONUMENT RECORD

COLUMBIA COUNTY

INSTRUCTIONS: This record shall show the location of the corner and shall include all of the following nine elements (a through i).

(a) Identify the corner by reference to the U. S. public land survey system.

O - Corner monument restored.

CORNER MONUMENT RESTORED WAS THE

N1/4 CORNER OF SECTION 3, T. 13 N., R. 7 E., TOWN OF LEWISTON, COL. CO.

CORNER HISTORY:

ORIGIN:

BY SURVEYOR(S) _____

DATE: _____

PERPETUATION: (PAGE, DATE & SURVEYOR)

VOL. I SEE PREVIOUS TIE SHEET

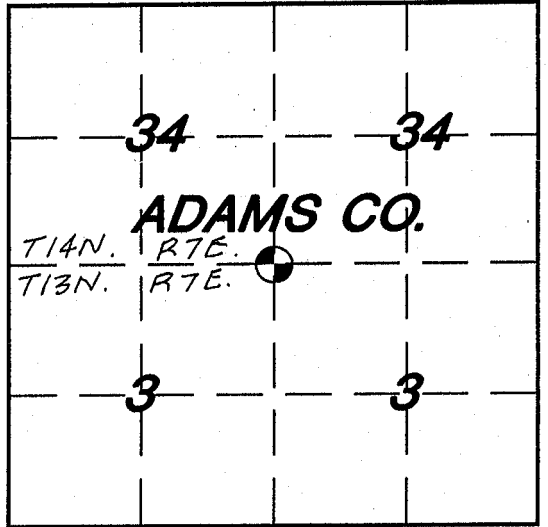
VOL. II _____

B.P.R. _____

FIELD BOOK _____

RECENT SURVEYS: (REF., DATE & SURVEYOR)

TIE SHEET BY JAMES R. GROTHMAN, RLS. DATED 1/31/84



(b) Describe any record evidence, monument evidence, occupational evidence, testimonial evidence or any other material evidence you considered, and whether the monument was found or placed.

EVIDENCE FOUND:

RECORD _____, MONUMENT X, OCCUPATIONAL _____, TESTIMONIAL _____, OTHER _____.

ORIGINAL CORNER MONUMENT LOCATION WAS N/A FOUND.

DESCRIPTION: FOUND COLUMBIA COUNTY MONUMENT AND FOUR WITNESS MONUMENTS IN GOOD CONDITION.

ALSO ESTABLISHED G.P.S. COORDINATE VALUES. SEE COMPOSITE MAP IN LAND RECORDS OFFICE

COLUMBIA COUNTY MONUMENT SET IN PLACE. (FOR ANY ADD'L INFO SEE BACK)

(c) In the plan view drawing below, provide reference ties to at least 4 witness monuments, or, if the location is within a municipality, to at least 2 witness monuments. (Witness monuments shall be made of concrete, natural stone, iron or other equally durable material.)

Describe witness monuments:

(d) Show a plan view drawing depicting the relevant monuments and reference ties which is sufficient in detail to enable accurate relocation of the corner monument if the corner monument is disturbed. Indicate north.

- COLUMBIA COUNTY MONUMENT SET - 1"x30" REBAR WITH ALUMINUM CAP

- 3/4"x30" REBAR W/ALUM. WITNESS CAP SET

- (OTHER) FOUND ALUM. WITNESS MONUMENT

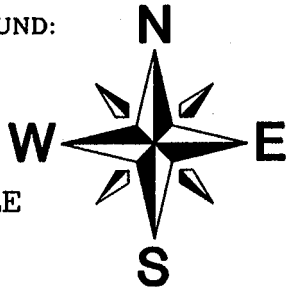
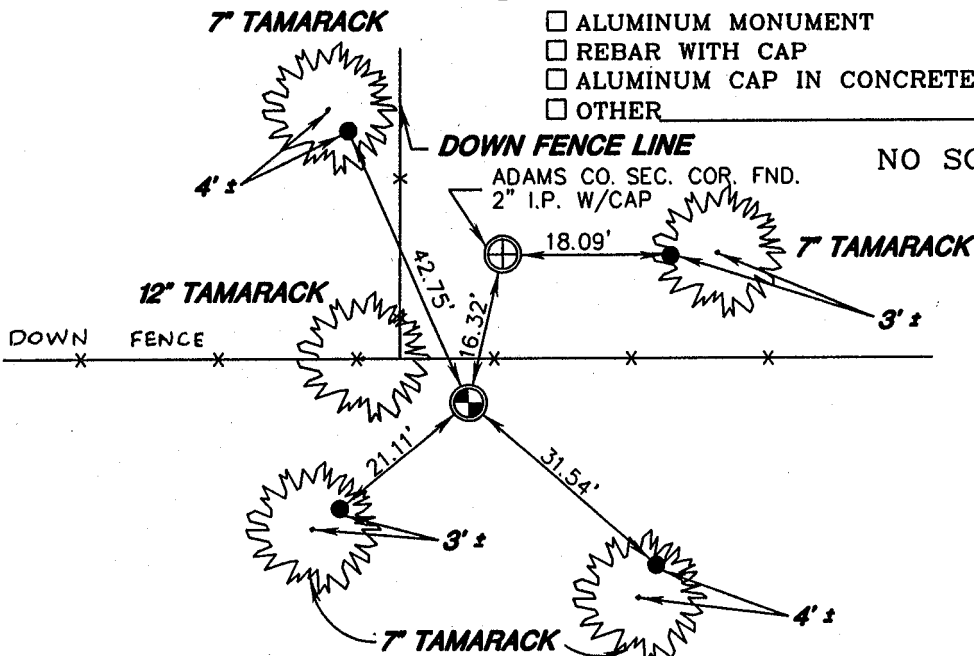
- COLUMBIA COUNTY MONUMENT FOUND:

ALUMINUM MONUMENT

REBAR WITH CAP

ALUMINUM CAP IN CONCRETE

OTHER _____



NO SCALE

DRAFTED BY B.M.K. DATE 12/19/00 CORNER REF. A-15

(e) Describe any material discrepancy between the location of the corner as restored of reestablished and the location of that corner as previously restored or reestablished by distance and direction. Show the discrepancy on the plan view drawing under (d), above. Show the distances between the corner as previously restored or reestablished and (1), the corner as restored or reestablished, and (2), to at least 2 of the witness monuments shown on the drawing in (d), above.

FOUND: _____

SET BY: _____

JOB REF: _____

BEARS _____ FROM CORNER MON. SET.

(f) Was the corner restored through acceptance of (1), an obliterated evidence location, or (2), a found perpetuated location?

THIS CORNER WAS RESTORED THROUGH FOUND PERPETUATED LOCATION.

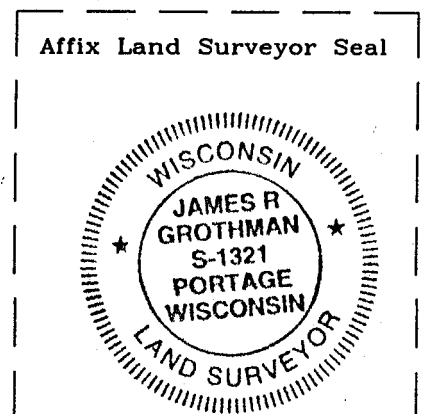
(g&h) Was the corner reestablished through lost corner proportionate methods? If so, show the method, including the directions and distances to other public land survey corners used as evidence or used for proportioning in determining the corner location?

BEARINGS REFERENCED TO _____
DISTANCES ARE: _____ GRID _____ GROUND
GRID FACTOR: _____

NO SCALE



picture taken: yes no



(i) I, JAMES R. GROTHMAN

(type or print name) certify that the corner location shown on this record was determined by me or under my direction and control and that this U.S. Public Land Survey Monument Record is correct and complete to the best of my knowledge and belief.

James R. Grothman 01/05/01
Signature Date