

35 SECTION 14 TOWN 07 RANGE

ADAMS COUNTY

COUNTY CORNER NO: 130
 ROMPORTOL ID: 41407350020

PUBLIC LAND SURVEY MONUMENT RECORD

TYPE OF MONUMENT: HARRISON
 ADAMS COUNTY COORDINATES, NAD 83 (2007)

N. 100788.587
 E. 581053.584

ELEVATION- --- DATUM ---

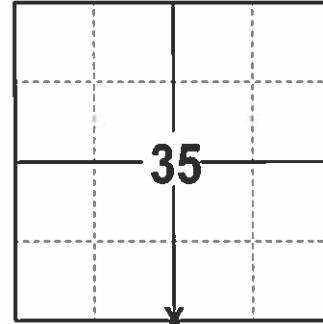
FIELD WORK DATE: 2/15/2017

BASIS FOR MONUMENT LOCATION

1977- PLS 1191 SET A HARRISON. RESEARCHED ADAMS AND COLUMBIA COUNTY SURVEY NOTES. FOUND ADAMS COUNTY SURVEY OF RECORD BY A.J. BARRATT IN VOL. 2 PG. 184 IN 1896. FOUND B.T. ALIVE AND STANDING AS RECORDED IN FIELD NOTES BY BARRATT. SET CORNER FROM B.T. CORNER FELL AT OLD FENCE INTERSECTION. EDM TRAVERSE, PROJECT 6585 FILE 22-73-12, MID STATE ASSOCIATES.

2001- PLS 1321 FOUND A HARRISON AND SET 4 TIES.

2017 - PLS 2994 FOUND A HARRISON FLUSH THE SURFACE, EXTENSIVE SEARCH FOR TIES, NONE FOUND. ACCEPTED HARRISON AND SET 4 NEW TIES.



LOCATION
(INDICATE CORNER BY "X")

SEAL:

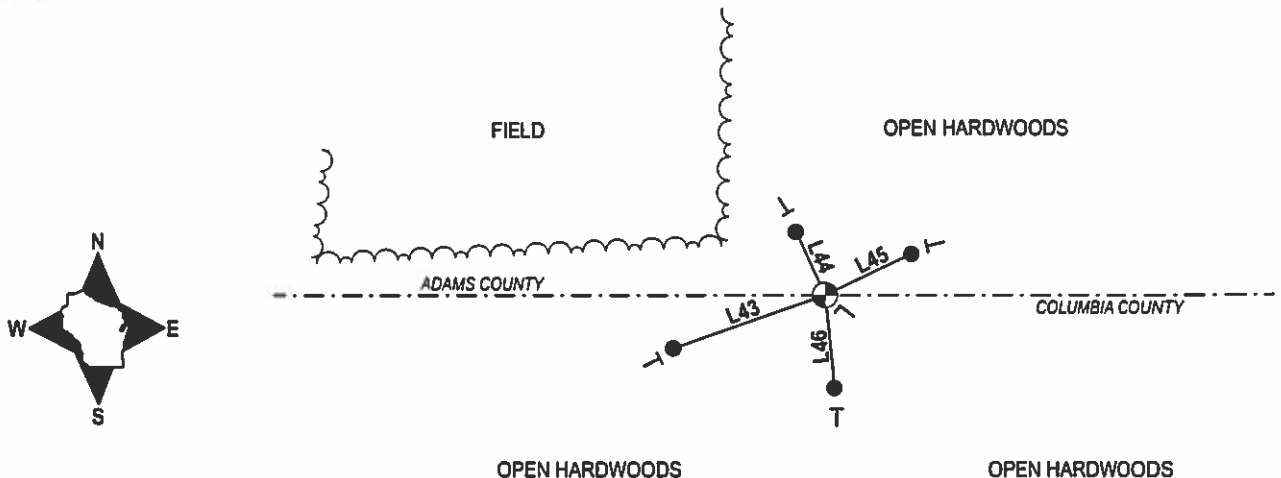


DATA SHOWN HERE ON THIS TIE SHEET IS CORRECT AND COMPLETE TO THE BEST OF MY KNOWLEDGE AND BELIEF.

PROFESSIONAL LAND SURVEYOR

DATE 3/15/17

- TIE SKETCH -



- 3/4" X 18" IRON REBAR SET, 1.50#/FT
- ⊙ HARRISON FOUND
- ┌ VINYL "T" POST
- └ FIBERGLASS "T" POST

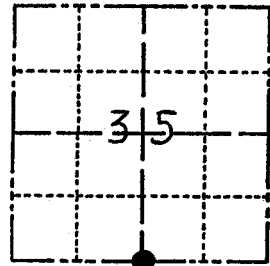
LINE	BEARING	DISTANCE
L39	N 19°03'50" E	23.48'
L40	S 81°58'47" E	23.39'
L41	S 17°12'32" E	24.19'
L42	S 61°03'43" W	24.44'

ADAMS COUNTY

Survey Monument Record

TYPE OF MONUMENT: Harrison Standard
STATE PLANE COORDINATES: N _____
E _____
ELEVATION — M.S.L. DATUM: _____
THETA ANGLE: _____
FIELD BOOK: 542 PAGE 21

CORNER NO. 130
SECTION 35
TOWN 14
RANGE 7



LOCATION
(Indicated by 'X')

BASIS FOR MONUMENT LOCATION

(Use reverse side if necessary)

Show info such as: History of corner, with reference to Vol. and pg, dates, surveyor; exact description of monument replaced; if location computed, by taped or EDM traverse; landowner remarks, etc.

Researched Adams & Columbia County survey notes. Found survey in record made by A.J. Barrett in Adams County recorded in V.2 Pg 184 in 1896. Found Bearing tree alive & standing as recorded in field notes by A.J. Barrett. Set corner from bearing tree. Corner fell at old fence intersection, E.D.M. Traverse Pros # 6585 File 22-73-12 Mid-state Associates

1-3-12 SEE ATTACHED MS

SEAL:



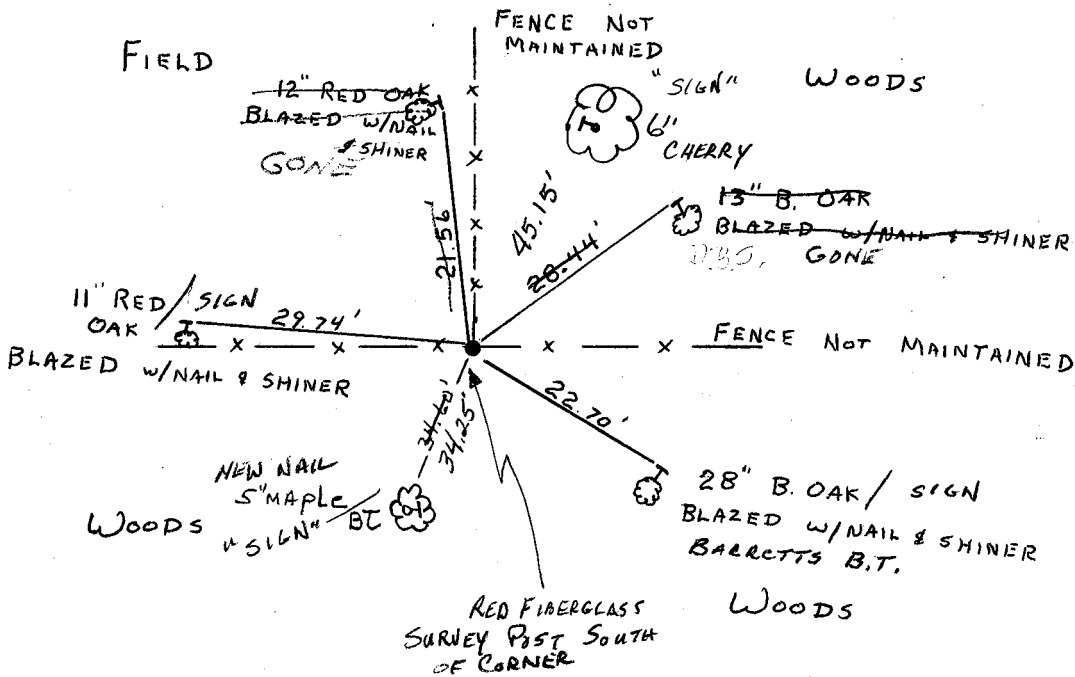
CERTIFIED CORRECT:

Allen D. Rohde
Registered Land Surveyor

DATE: 7-21-77

TIE SKETCH

(Show at least four ties)



123

12

MAINTENANCE RECORD

Date	Init.	Remarks
12-7-81	SK-DW	
3-18-86	GR-SS	CDR, O.K.
12-71	S-	OK
12-18-01	JG	1-NEW TIE
1-23-06	JG	OK

ADAMS COUNTY

Survey Monument Record

TYPE OF MONUMENT: Harrison Standard

STATE PLANE COORDINATES: N _____

E _____

ELEVATION — M.S.L. DATUM: _____

THETA ANGLE: _____

FIELD BOOK: 542 PAGE 21

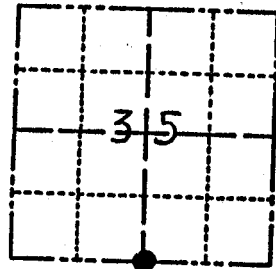
1

CORNER NO. 130

SECTION 35

TOWN 14

RANGE 7



LOCATION
(Indicated by 'X')

SEAL:



BASIS FOR MONUMENT LOCATION

(Use reverse side if necessary)

Show info such as: History of corner, with reference to Vol. and pg, dates, surveyor; exact description of monument replaced; if location computed, by taped or EDM traverse; landowner remarks, etc.

Researched Adams & Columbia County survey notes. Found survey in record made by A.J. Barrett in Adams County recorded in V.2 Pg 184 in 1896. Found Bearing Tace alive & standing as recorded in field notes by A.J. Barrett. Set corner from bearing tace. Corner fell at old Fence Intersection, E.O.M. TRAVERSE PROS # 6585 File 22-73-12 Mid-state Associates

CERTIFIED CORRECT:

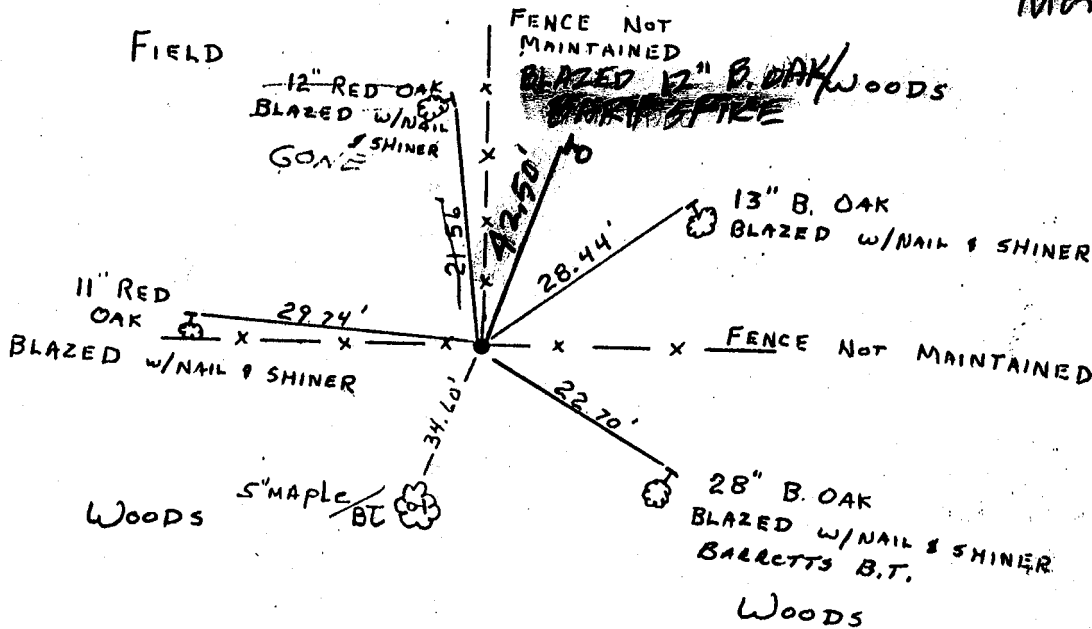
Allen D. Rohde
Registered Land Surveyor

DATE: 7-31-77

TIE SKETCH

(Show at least four ties)

Dec 21st 81
Mark Conlan



U. S. PUBLIC LAND SURVEY MONUMENT RECORD

COLUMBIA COUNTY

INSTRUCTIONS: This record shall show the location of the corner and shall include all of the following nine elements (a through i).

(a) Identify the corner by reference to the U. S. public land survey system.

○ - Corner monument restored.

CORNER MONUMENT RESTORED WAS THE

N/A CORNER OF SECTION 2, T. 13 N., R. 7 E., TOWN OF LEWISTON, COL. CO.

CORNER HISTORY:

ORIGIN:

BY SURVEYOR(S) _____

DATE: _____

PERPETUATION: (PAGE, DATE & SURVEYOR)

VOL. I SEE PREVIOUS TIE SHEET

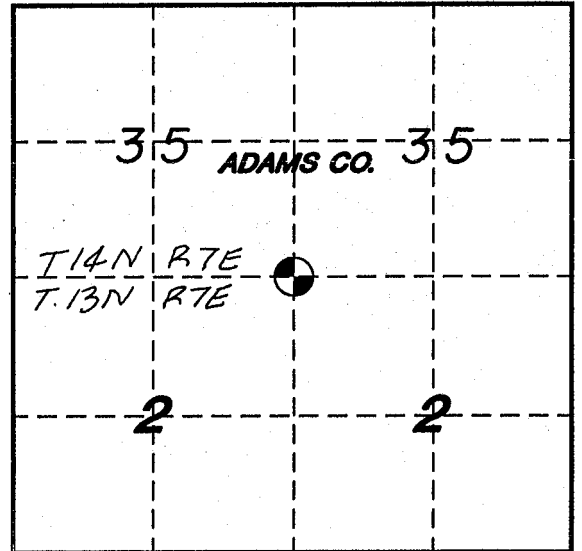
VOL. II _____

B.P.R. _____

FIELD BOOK _____

RECENT SURVEYS: (REF., DATE & SURVEYOR)

TIE SHEET BY ALLEN D. ROHDE



(b) Describe any record evidence, monument evidence, occupational evidence, testimonial evidence or any other material evidence you considered, and whether the monument was found or placed.

EVIDENCE FOUND:

RECORD , MONUMENT ✓, OCCUPATIONAL , TESTIMONIAL , OTHER .

ORIGINAL CORNER MONUMENT LOCATION WAS N/A FOUND.

DESCRIPTION: FOUND HARRISON MONUMENT. SET FOUR WITNESS MONUMENTS.

ALSO ESTABLISHED GPS COORDINATE VALUES. SEE COMPOSITE MAP IN LAND RECORDS OFFICE.

COLUMBIA COUNTY MONUMENT SET IN PLACE. (FOR ANY ADD'L INFO SEE BACK)

(c) In the plan view drawing below, provide reference ties to at least 4 witness monuments, or, if the location is within a municipality, to at least 2 witness monuments. (Witness monuments shall be made of concrete, natural stone, iron or other equally durable material.)

Describe witness monuments:

(d) Show a plan view drawing depicting the relevant monuments and reference ties which is sufficient in detail to enable accurate relocation of the corner monument if the corner monument is disturbed. Indicate north.

⊕ - COLUMBIA COUNTY MONUMENT SET - 1"x30" REBAR WITH ALUMINUM CAP

○ - 3/4"x30" REBAR W/ALUM. WITNESS CAP SET

● - (OTHER) FOUND ALUM. WITNESS MONUMENT

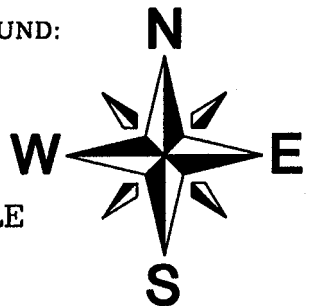
⊕ - COLUMBIA COUNTY MONUMENT FOUND:

ALUMINUM MONUMENT

REBAR WITH CAP

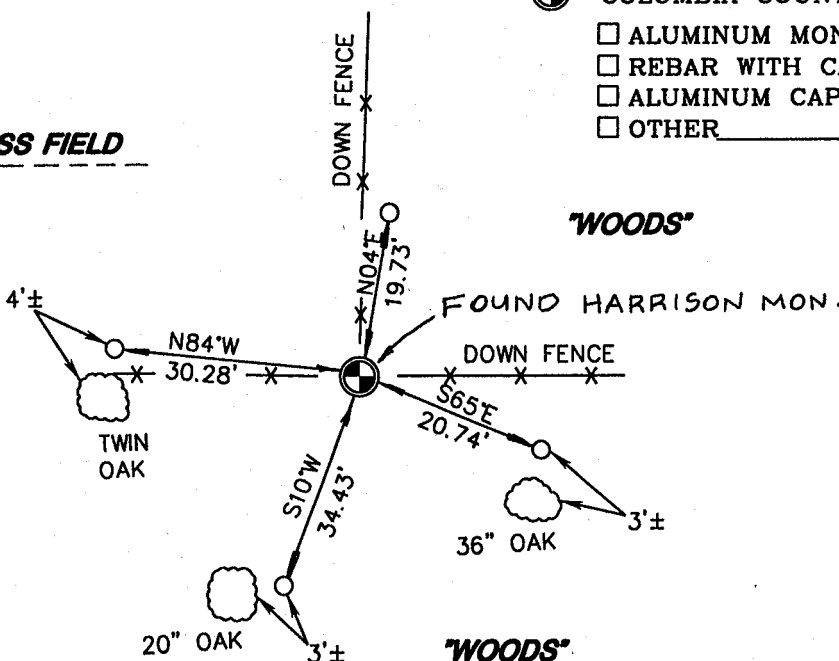
ALUMINUM CAP IN CONCRETE

OTHER _____



NO SCALE

GRASS FIELD



N _____

E _____

DRAFTED BY C.A.E. DATE 1/31/00 CORNER REF. A-19

- (e) Describe any material discrepancy between the location of the corner as restored or reestablished and the location of that corner as previously restored or reestablished by distance and direction. Show the discrepancy on the plan view drawing under (d), above. Show the distances between the corner as previously restored or reestablished and (1), the corner as restored or reestablished, and (2), to at least 2 of the witness monuments shown on the drawing in (d), above.

FOUND: _____
SET BY: _____

JOB REF: _____

BEARS _____ FROM CORNER MON. SET.

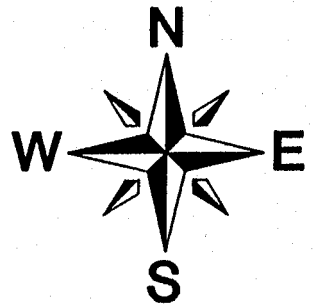
- (f) Was the corner restored through acceptance of (1), an obliterated evidence location, or (2), a found perpetuated location?

THIS CORNER WAS RESTORED THROUGH FOUND PERPETUATED LOCATION.

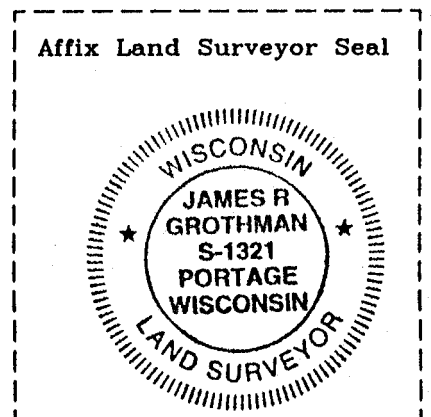
- (g&h) Was the corner reestablished through lost corner proportionate methods? If so, show the method, including the directions and distances to other public land survey corners used as evidence or used for proportioning in determining the corner location?

BEARINGS REFERENCED TO _____
DISTANCES ARE: _____ GRID _____ GROUND
GRID FACTOR: _____

NO SCALE



picture taken: yes no



- (i) I, JAMES R. GROTHMAN
(type or print name) certify that the corner location shown on this record was determined by me or under my direction and control and that this U.S. Public Land Survey Monument Record is correct and complete to the best of my knowledge and belief.

Signature

Date

James R. Grothman
d/05/01