

36 SECTION    14 TOWN    07 RANGE

# ADAMS COUNTY

COUNTY CORNER NO: 132

ROMPORTOL ID: 41407360020

## PUBLIC LAND SURVEY MONUMENT RECORD

TYPE OF MONUMENT: HARRISON  
 ADAMS COUNTY COORDINATES, NAD 83 (2007)

N. 100803.081

E. 586359.754

ELEVATION-      DATUM     

FIELD WORK DATE: 2/15/2017

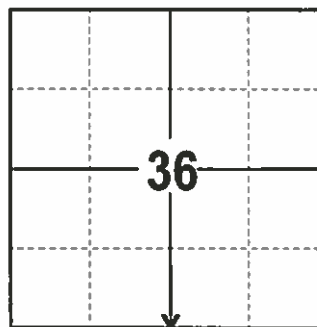
### BASIS FOR MONUMENT LOCATION

1977- PLS 1191 SET A HARRISON. RESEARCHED ADAMS AND COLUMBIA COUNTY SURVEY NOTES. FOUND SURVEY ON RECORD BY C.E. CORNING DEPUTY COUNTY SURVEYOR UNDER THE SUPERVISION OF A.F.S. CLARK COUNTY SURVEYOR IN JUNE 1910. BLUE PRINT #81 SET A STONE FROM A B.T. THAT WAS STILL STANDING. THE SET STONE WAS NOT RECOVERED, BELIEVED IT WAS MOVED WHEN A FENCE WAS BUILT. B.T. DISTANCE FELL IN LINE WITH FENCE TO THE SOUTH, VERIFIED DISTANCE TO SE CORNER OF SECTION EDM TRAVERSE PROJECT 6585, FILE 22-73-12, MID STATE ASSOCIATES.

1985- PLS 1761 FOUND A HARRISON PER TIE SHEET DATED 7/21/1977, BY PLS 1191. EXISTING TIES "OK" ADDED WITNESS TREE TO THE EAST.

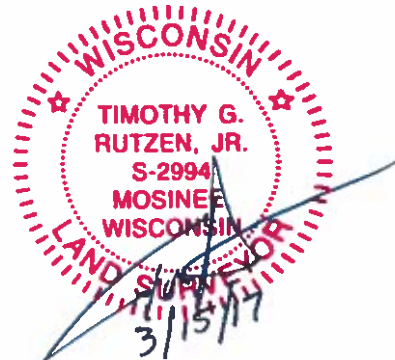
2001- PLS 1321 FOUND A HARRISON AND SET 4 TIES.

2017 - PLS 2994 FOUND A HARRISON 4" BELOW THE SURFACE AND 3 EXISTING TIES. HARRISON FITS WELL WITH EXISTING TIES, ACCEPTED HARRISON, AND SET 1 ADDITIONAL TIE AND REMEASURED THE EXISTING TIES.



LOCATION  
(INDICATE CORNER BY "X")

SEAL:

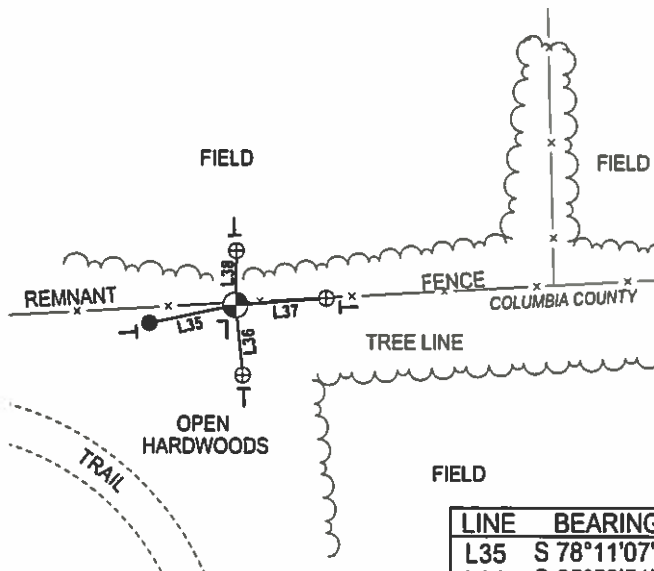
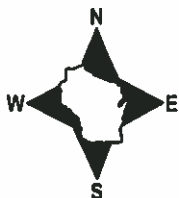


DATA SHOWN HERE ON THIS TIE SHEET IS CORRECT AND COMPLETE TO THE BEST OF MY KNOWLEDGE AND BELIEF.

PROFESSIONAL LAND SURVEYOR

DATE 3/15/17

### - TIE SKETCH -



- ⊕ 3/4" IRON ROD W/ALUMINUM CAP FOUND
- 3/4" X 18" IRON REBAR SET, 1.50#/FT
- ⊕ HARRISON FOUND
- VINYL "T" POST
- └ FIBERGLASS "T" POST

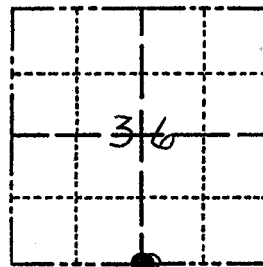
LINE	BEARING	DISTANCE
L35	S 78°11'07" W	22.93'
L36	S 05°59'51" E	18.28'
L37	N 85°51'22" E	23.73'
L38	N 01°13'19" E	14.07'

**ADAMS COUNTY**

**Survey Monument Record**

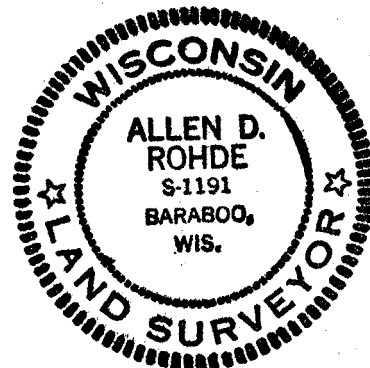
TYPE OF MONUMENT: Harrison Standard  
 STATE PLANE COORDINATES: N \_\_\_\_\_  
 E \_\_\_\_\_  
 ELEVATION — M.S.L. DATUM: \_\_\_\_\_  
 THETA ANGLE: \_\_\_\_\_  
 FIELD BOOK: 542 PAGE 21

CORNER NO. 132  
 SECTION 36  
 TOWN 14  
 RANGE 7



LOCATION  
(Indicated by 'X')

SEAL:



CERTIFIED CORRECT:

*Allen D. Rohde*  
 Registered Land Surveyor

DATE: 7-21-77

**BASIS FOR MONUMENT LOCATION**

(Use reverse side if necessary)

Show info such as: History of corner, with reference to Vol. and pg. dates, surveyor; exact description of monument replaced; if location computed, by taped or EDM traverse; landowner remarks, etc.

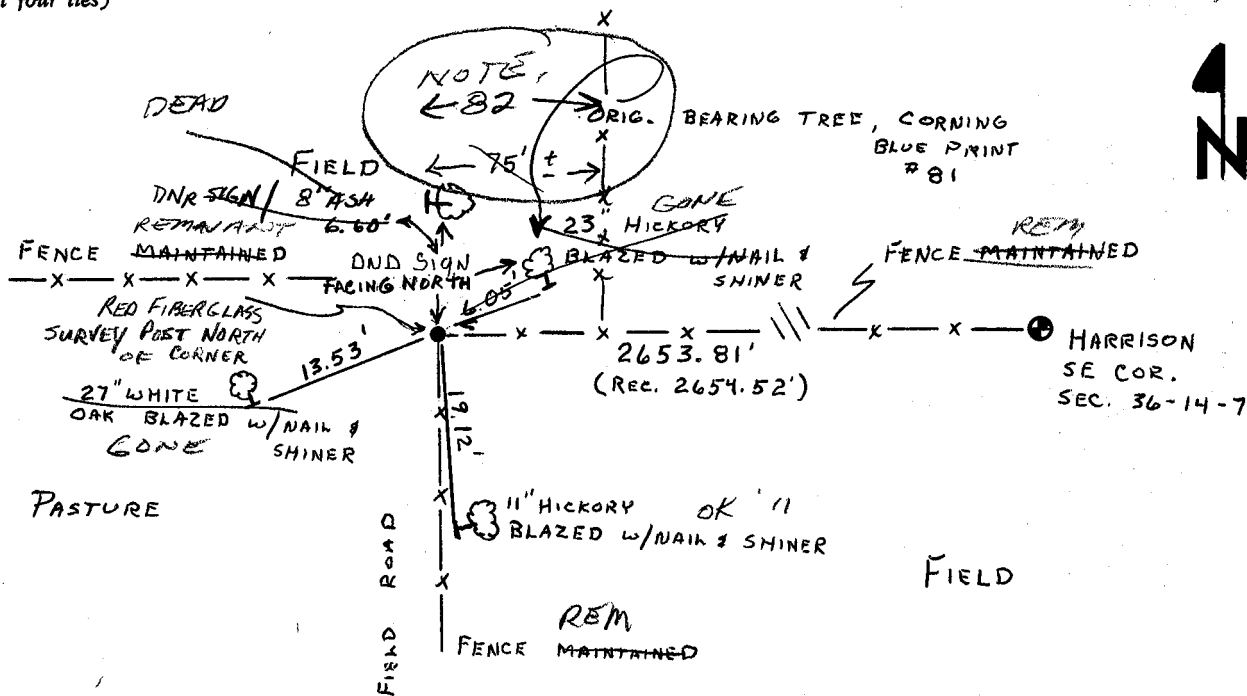
*Researched Adams & Columbia County survey notes. Found survey on record made by C.E. Canning deputy county surveyor under the supervision of A.H. Clark County surveyor in June of 1910, Blue Print # 81 Set Corner from B.T. which is still standing A stone was set for corner but apparently was moved when fence was built, could not find stone. B.T. distance still in line with fence to south. Verified distance to SE Cor of section, see sketch below, E.D.M. traverse Page 6585, File 22-73-12, Mid-State Assoc.*

**SEE GROTHMAN TIE SHEET  
 DATED 03-08-00**

**TIE SKETCH**

(Show at least four ties)

FD 1" IP GENERAL  
 ENG. CAP 82 EAST



MAINTENANCE RECORD

Date	Init.	Remarks
12-7-81	SK-DW	TIES O.K.
7-12-91	JA-CK	OK
12-18-01	JG	OK
1-23-06	JG	1-NEW TIE
3-2-11	SS	<del>508</del> GROTHMAN TIE STABBY

ADAMS COUNTY

Survey Monument Record

TYPE OF MONUMENT: Harrison Standard ✓

STATE PLANE COORDINATES: N \_\_\_\_\_

E \_\_\_\_\_

ELEVATION — M.S.L. DATUM: \_\_\_\_\_

THETA ANGLE: \_\_\_\_\_

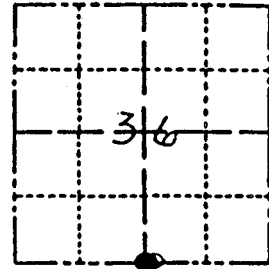
FIELD BOOK: 542 PAGE 21

CORNER NO. 132

SECTION 36

TOWN 14

RANGE 7



LOCATION (Indicated by 'X')

SEAL:



CERTIFIED CORRECT:

*Allen D. Rohde*  
Registered Land Surveyor

DATE: 7-21-77

BASIS FOR MONUMENT LOCATION

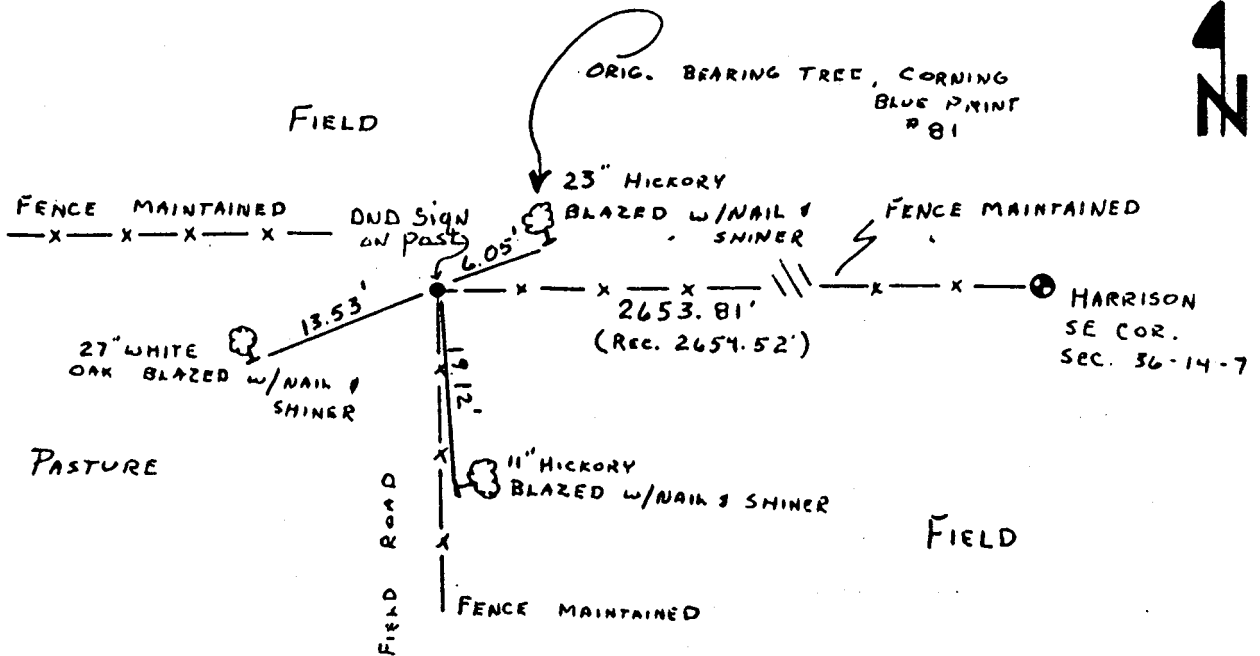
(Use reverse side if necessary)

Show info such as: History of corner, with reference to Vol. and pg. dates, surveyor; exact description of monument replaced; if location computed, by taped or EDM traverse; landowner remarks, etc.

Researched Adams & Columbia County survey notes. Found survey on record made by C.E. Canning deputy county surveyor under the supervision of A.F.S. Clark County surveyor in June of 1910, Blue Print # 81 set corner from B.T. which is still standing. A stone was set for corner but apparently was moved when fence was built, could not find stone. B.T. distance still in line with fence to south. Verified distance to SE. Cor of section, see sketch below, EDM traverse Page 6585, File 22-73-12, Mid-State Assoc.

TIE SKETCH

(Show at least four ties)

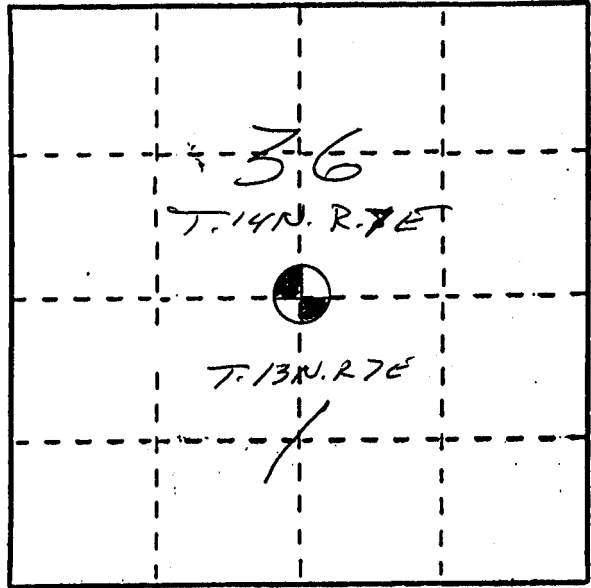


# U. S. PUBLIC LAND SURVEY MONUMENT RECORD

**INSTRUCTIONS:** This record shall show the location of the corner and shall include all of the following nine elements (a through i).

- (a) Identify the corner by reference to the U.S. public land survey system.
- = Corner monument restored.

Found the S 1/4 corner, Section 36, T. 14N., R. 7E; Town of New Haven, ADAMS Co., WI.



- (b) Describe any record evidence, monument evidence, occupational evidence, testimonial evidence or any other material evidence you considered, and whether the monument was found or placed.

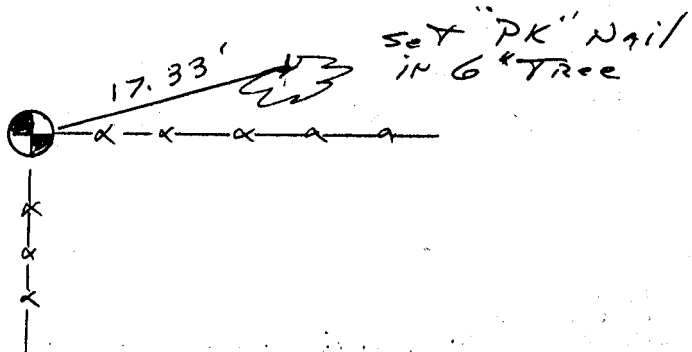
Found HARRISON MONUMENT as per A.D. Rohde, Tie Sheet Dated, 7-21-77, EXISTING TIES OK. Added Tie to the east as shown below

- (c) In the plan view drawing below, provide reference ties to at least 4 witness monuments, or, if the location is within a municipality, to at least 2 witness monuments. (Witness monuments shall be made of concrete, natural stone, iron or other equally durable material.) Describe witness monuments.

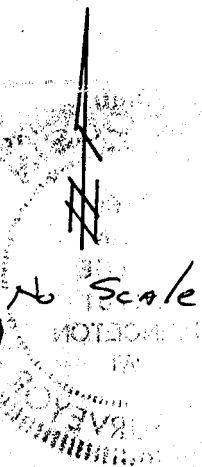
- (d) Show a plan view drawing depicting the relevant monuments and reference ties which is sufficient in detail to enable accurate relocation of the corner monument if the corner monument is disturbed. Indicate north.

(See Tie Sheet by A.D. Rohde dated 7-21-77)

Other Ties OK



GEC  
File 285-9

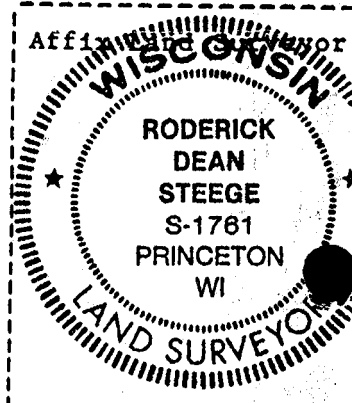


32  
10) READING FOR MATERIAL DISCREPANCY between the location of the corner as restored or reestablished and the location of that corner as previously restored or reestablished above. Show the discrepancy on the plan view drawing under (d), and (1) the corner as restored or reestablished, and (2) to at least 2 of the witness monuments shown on the drawing in (d), above.

(f) Was the corner restored through acceptance of (1) an obliterated evidence location, or, (2) found perpetuated location?

*This was a Found Perpetuated location.*

(g) Was the corner reestablished through lost corner proportionate methods? If so, show the method, including the directions and distances to other public land survey corners used as evidence or used for proportioning in determining the corner location?



(1) I, Roderick D Steege, RLS, 1761  
(type or print name), certify that the corner location shown on this record was determined by me or under my direction and control and that this U.S. Public Land Survey Monument Record is correct and complete to the best of my knowledge and belief.

*Roderick D Steege*  
SIGNATURE DATE 2/29/85

U. S. PUBLIC LAND SURVEY MONUMENT RECORD

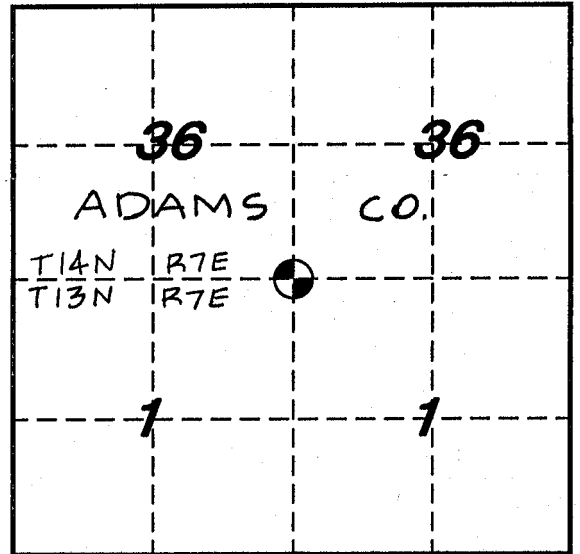
COLUMBIA COUNTY

INSTRUCTIONS: This record shall show the location of the corner and shall include all of the following nine elements ( a through i ).

(a) Identify the corner by reference to the U. S. public land survey system.

○ - Corner monument restored.

CORNER MONUMENT RESTORED WAS THE N 1/4 CORNER OF SECTION 1, T. 13 N., R. 7 E., TOWN OF LEWISTON, COL. CO.  
 CORNER HISTORY:  
 ORIGIN:  
 BY SURVEYOR(S) \_\_\_\_\_  
 DATE: \_\_\_\_\_  
 PERPETUATION: (PAGE, DATE & SURVEYOR)  
 VOL. I SEE PREVIOUS TIE SHEET  
 VOL. II \_\_\_\_\_  
 B.P.R. \_\_\_\_\_  
 FIELD BOOK \_\_\_\_\_  
 RECENT SURVEYS: (REF., DATE & SURVEYOR)



TIE SHEET BY ALLEN D. ROHDE, RLS. DATED 7-21-77

(b) Describe any record evidence, monument evidence, occupational evidence, testimonial evidence or any other material evidence you considered, and whether the monument was found or placed.

EVIDENCE FOUND:

RECORD \_\_\_\_\_, MONUMENT , OCCUPATIONAL \_\_\_\_\_, TESTIMONIAL \_\_\_\_\_, OTHER \_\_\_\_\_.

ORIGINAL CORNER MONUMENT LOCATION WAS N/A FOUND.

DESCRIPTION: FOUND HARRISON MONUMENT. SET FOUR WITNESS MONUMENTS.

ALSO ESTABLISHED GPS COORDINATE VALUES. SEE COMPOSITE MAP IN LAND RECORDS OFFICE.

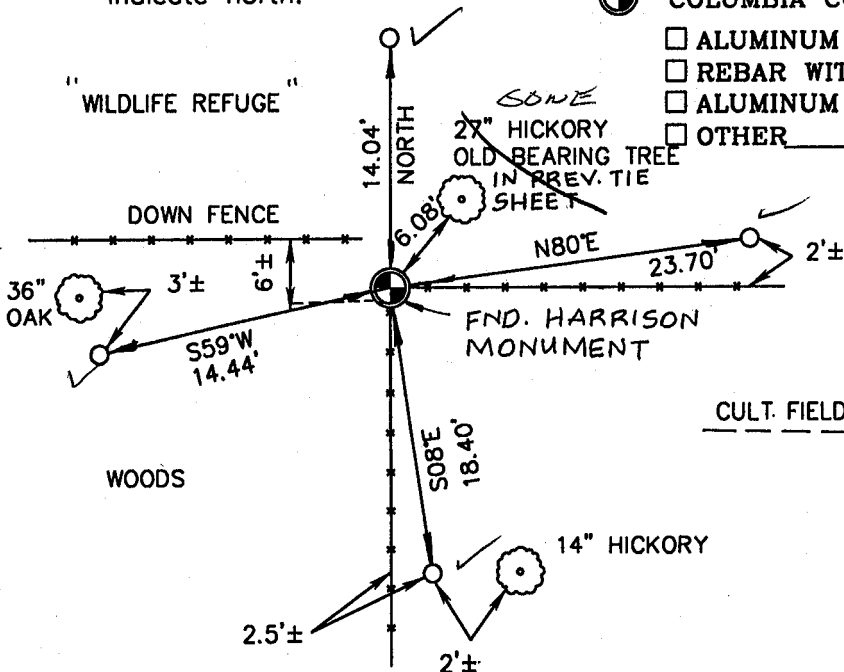
COLUMBIA COUNTY MONUMENT SET IN PLACE. (FOR ANY ADD'L INFO SEE BACK)

(c) In the plan view drawing below, provide reference ties to at least 4 witness monuments, or, if the location is within a municipality, to at least 2 witness monuments. (Witness monuments shall be made of concrete, natural stone, iron or other equally durable material.)

Describe witness monuments:

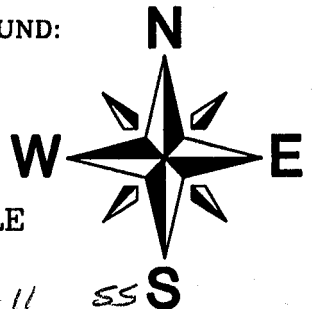
(d) Show a plan view drawing depicting the relevant monuments and reference ties which is sufficient in detail to enable accurate relocation of the corner monument if the corner monument is disturbed. Indicate north.

- COLUMBIA COUNTY MONUMENT SET - 1"x30" REBAR WITH ALUMINUM CAP
- 3/4"x30" REBAR W/ALUM. WITNESS CAP SET
- (OTHER) FOUND ALUM. WITNESS MONUMENT
- COLUMBIA COUNTY MONUMENT FOUND:
  - ALUMINUM MONUMENT
  - REBAR WITH CAP
  - ALUMINUM CAP IN CONCRETE
  - OTHER \_\_\_\_\_



NO SCALE

OK 3-2-11 SS



N \_\_\_\_\_

E \_\_\_\_\_

DRAFTED BY B.W.S. DATE 03/08/00 CORNER REF. 0057

- (e) Describe any material discrepancy between the location of the corner as restored or reestablished and the location of that corner as previously restored or reestablished by distance and direction. Show the discrepancy on the plan view drawing under (d), above. Show the distances between the corner as previously restored or reestablished and (1), the corner as restored or reestablished, and (2), to at least 2 of the witness monuments shown on the drawing in (d), above.

FOUND: \_\_\_\_\_  
 SET BY: \_\_\_\_\_  
 JOB REF: \_\_\_\_\_

BEARS \_\_\_\_\_ FROM CORNER MON. SET.

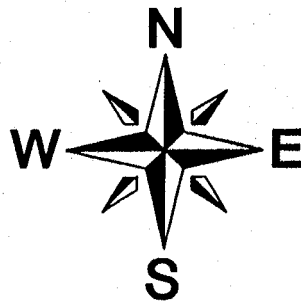
- (f) Was the corner restored through acceptance of (1), an obliterated evidence location, or (2), a found perpetuated location?

THIS CORNER WAS RESTORED THROUGH FOUND PERPETUATED LOCATION.

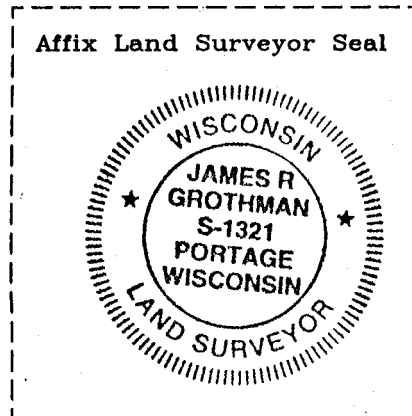
- (g&h) Was the corner reestablished through lost corner proportionate methods? If so, show the method, including the directions and distances to other public land survey corners used as evidence or used for proportioning in determining the corner location?

BEARINGS REFERENCED TO \_\_\_\_\_  
 DISTANCES ARE: \_\_\_\_\_ GRID \_\_\_\_\_ GROUND  
 GRID FACTOR: \_\_\_\_\_

NO SCALE



picture taken: yes  no



- (i) I, JAMES R. GROTHMAN  
 (type or print name) certify that the corner location shown on this record was determined by me or under my direction and control and that this U.S. Public Land Survey Monument Record is correct and complete to the best of my knowledge and belief.

Signature

Date

James R. Grothman 2/05/01