



000

LAND CORNER MONUMENT INDEX

TOWN 15

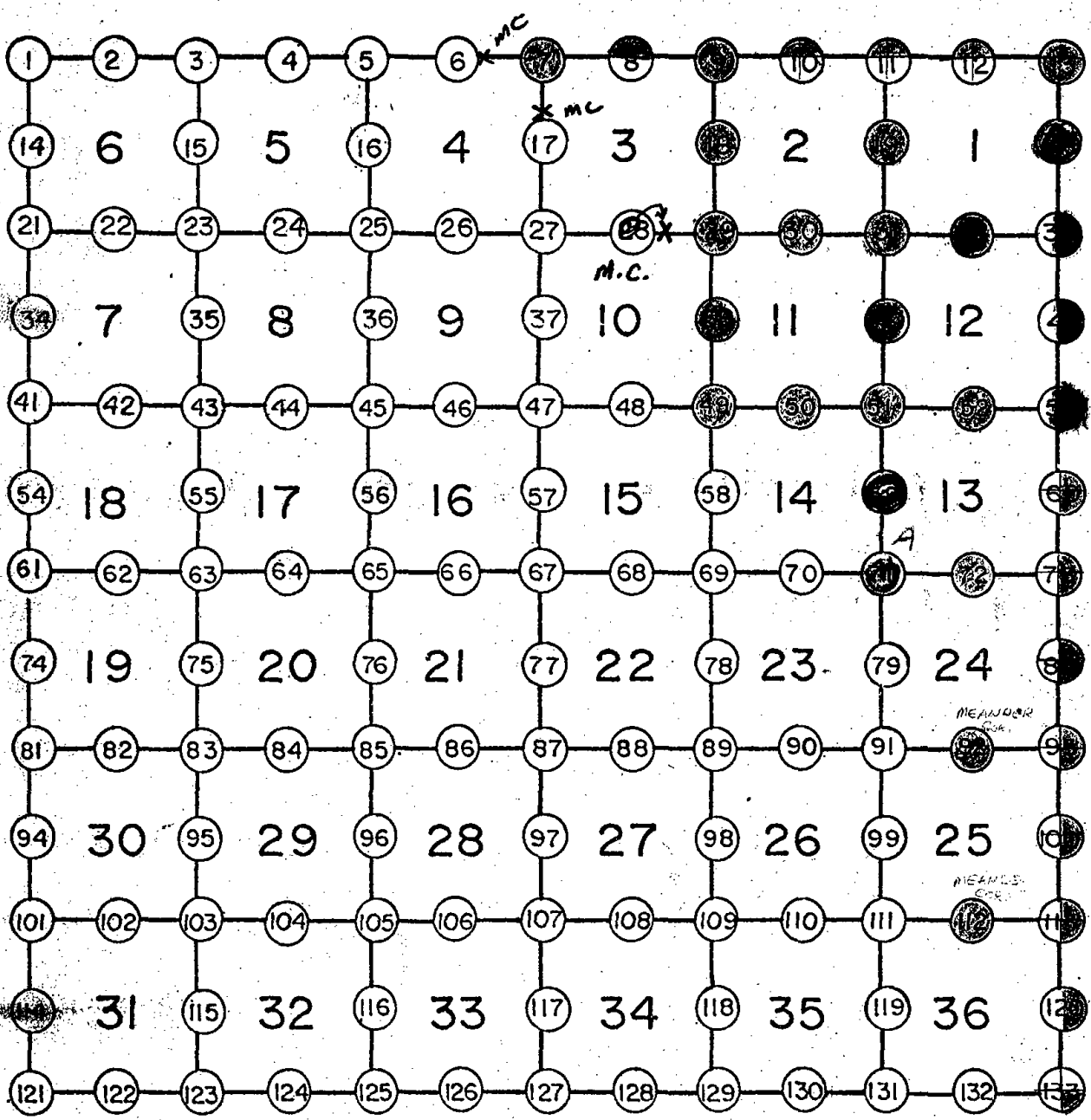
RANGE 5

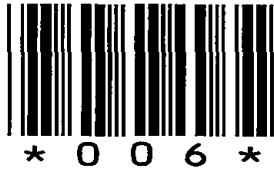
⊕ Corner Monumented
Tie Sheet Filed in Adjoining
Township as Indicated

● Corner Monumented
Tie Sheet In This Book

○ Corner May or May Not
Be Monumented -- No Ties

24



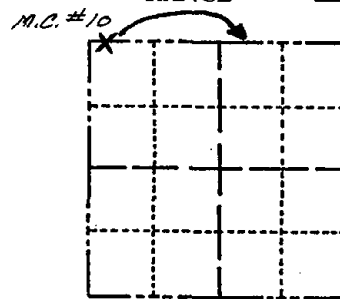


006

Government Land Corner Certificate

ADAMS _____ County
 TYPE OF MONUMENT: Concrete Monument/Brass Cap
 STATE PLANE COORDINATES: N _____
 E _____
 ELEVATION — M.S.L. DATUM: _____
 THETA ANGLE: _____
 FIELD BOOK: 5 PAGE 89-90
 DRAWN BY: SS

CORNER NO. 6 NC
 SECTION 4
 TOWN 15
 RANGE 5



LOCATION
 (Indicated by 'X')

SEAL:



DATA SHOWN HERE ON
 CERTIFIED CORRECT:

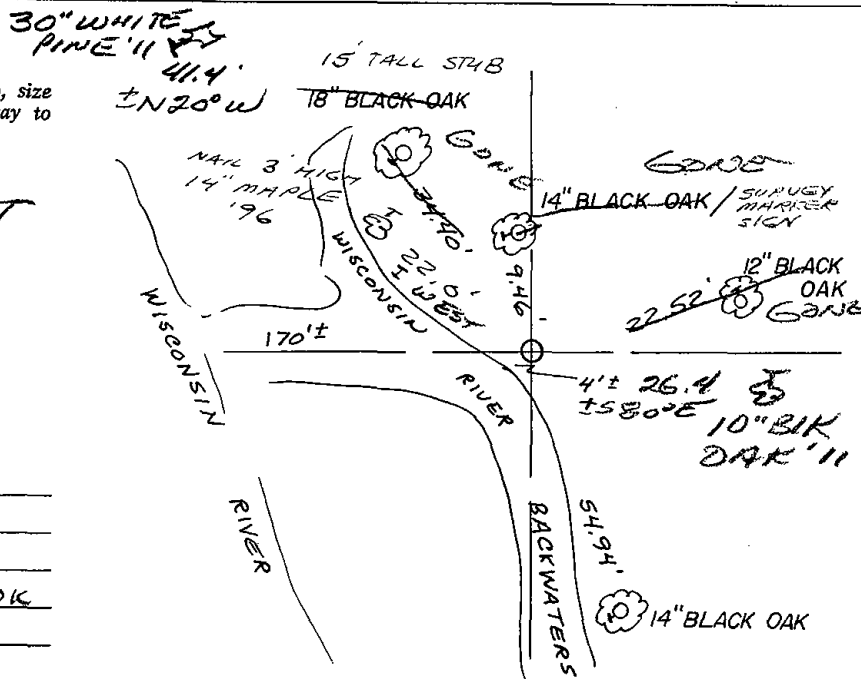
Gregory P. Rhinehart
 Registered Land Surveyor

DATE: 1-382

TIE SKETCH

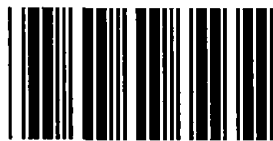
Show at least four ties, also fence lines, roads, topo, size and type of witness trees and if off road - best way to arrive at corner.

2-2-01 FOUND
STEEL POST ± 1' EAST
FROM MONUMENT



MAINTENANCE RECORD

Date	Init.	Remarks
1-28-86	GR-SS	OK
1-15-96	SG-SS	1-NEW TIE, MON. OK
2-2-01	SS	ALL OK
11-29-06	SG-SS	ALL OK
1-07-11	SS	2 NEW TIES



* 0 0 7 *

007

U.S. PUBLIC LAND SURVEY MONUMENT RECORD

ADAMS COUNTY

TYPE OF MONUMENT: 2" Capped Pipe

STATE PLANE COORDINATES: N _____

E _____

ELEVATION — M.S.L. DATUM: _____

THETA ANGLE: _____

FIELD BOOK: _____ PAGE _____

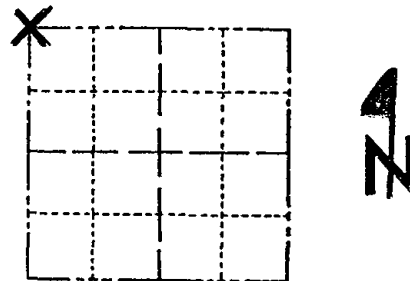
DRAWN BY: _____

CORNER NO. _____

SECTION 3

TOWN 15

RANGE 5



LOCATION
(Indicated by 'X')

SEAL: _____

BASIS FOR MONUMENT LOCATION

Show info such as: History of corner, with reference to Vol. and pg., dates, surveyor; exact description of monument replaced; if location computed, by taped or EDM traverse; landowner remarks, etc. (Use reverse side if necessary) (in conformance with Section A-E 502 of the Wisconsin Administrative Code)

This tie sheet replaces that of Tony Kiedrowski dated 06-01-76, which shows a harrison monument located at the fence corner that is approximately 105' north of capped pipe.

This capped pipe is used in several surveys to the south.

A note by Tony Kiedrowski, dated 02-14-84 indicates a change at this location, but apparently no revised tie sheet was filed.

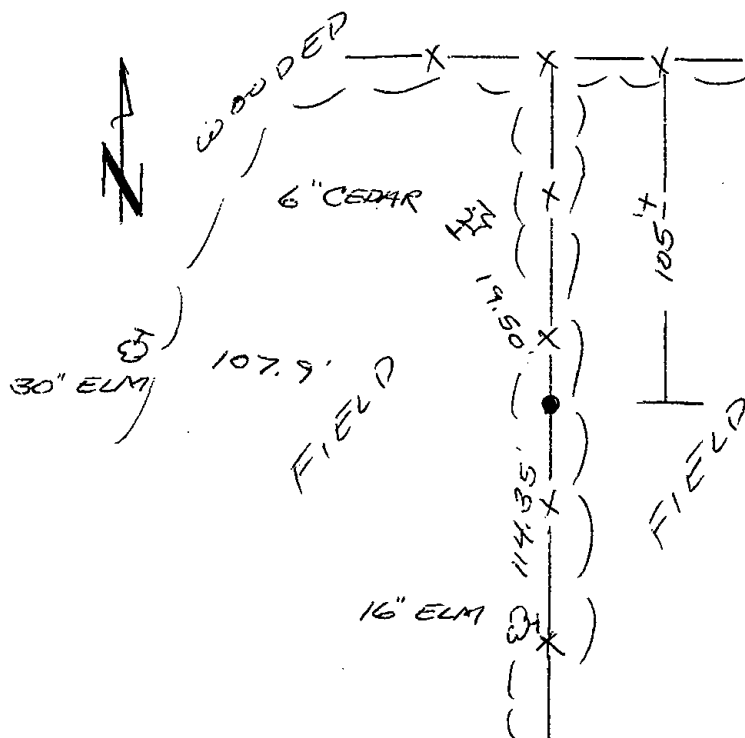
DATA SHOWN HERE ON
CERTIFIED CORRECT:

Registered Land Surveyor

DATE: _____

TIE SKETCH

Show at least four ties, also fence lines, roads, topo, size and type of witness trees' and if off road - best way to arrive at corner.

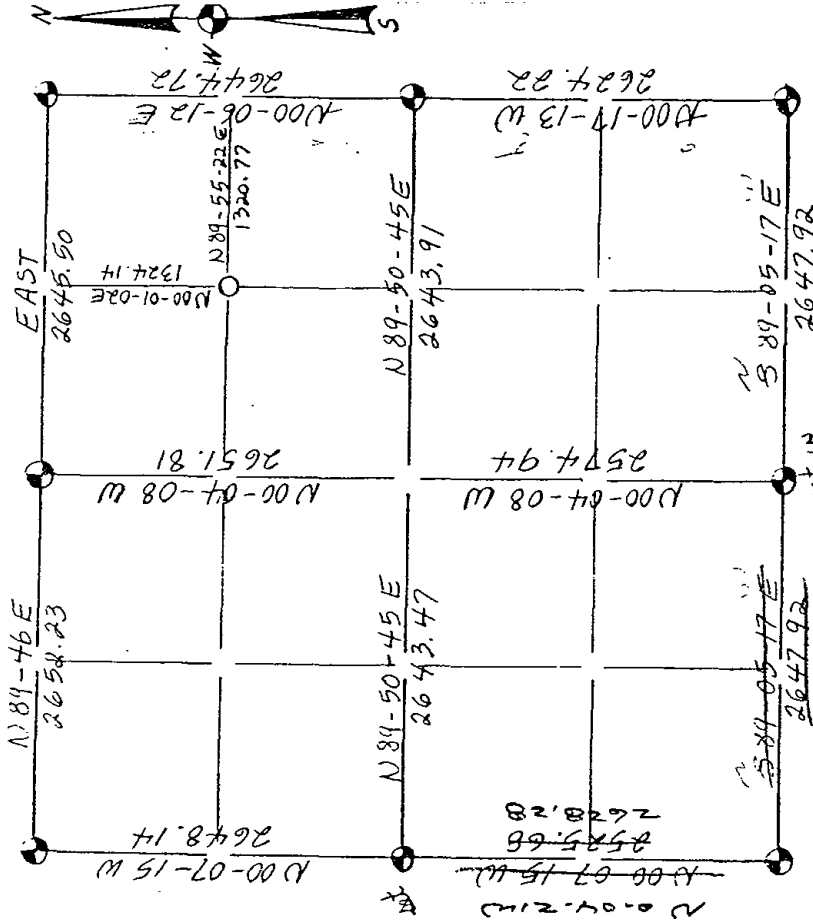


MAINTENANCE RECORD

Date	Init.	Remarks
11-29-06	JG-SS	RETIE 2" I.P.

Section Summary and Index

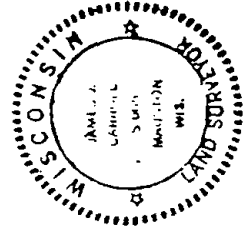
34 - 16 - 5E
 Section Town Range



LEGEND

- Harrison cast iron monument.
- Stone or concrete monument.
- Other 2" iron pipe.

3524930.93



5/27/80

KIEDROWSKI ENGINEERING, INC.
 4340 - 80TH STREET SOUTH (KELLNER)
 WISCONSIN RAPIDS, WI 54494
 PHONE (715) 421-0444

TO Gary
 SUBJECT

MESSAGE

DATE 5/14/80
 Note change in W. Line Survey 34 16 5E
 Site is also probably in wrong place.
 Section Tax map should be corrected and
 The dimension of N. 2 of N.E. 14 33
 - Put on the map. See some signed copy
 REPLY

SIGNED

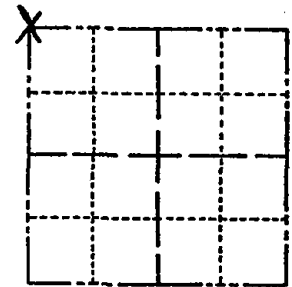
INSTRUCTIONS TO RECEIVER
 1. Write reply to address above & return with reply within 10 days
 2. Do not alter or destroy original
 3. Do not use for any other purpose

ADAMS COUNTY

Survey Monument Record

TYPE OF MONUMENT: Harrison ST
STATE PLANE COORDINATES: N _____
E _____
ELEVATION — M.S.L. DATUM: _____
THETA ANGLE: _____
FIELD BOOK: 38 PAGE 1

CORNER NO. 947
SECTION 3
TOWN 15
RANGE 5



LOCATION
(Indicated by 'X')

SEAL:

BASIS FOR MONUMENT LOCATION

(Use reverse side if necessary)

Show info such as: History of corner, with reference to Vol. and pg, dates, surveyor; exact description of monument replaced; if location computed, by taped or EDM traverse; landowner remarks, etc.

No other evidence found other than the intersection of four fence lines. No resurveys on record. Accepted fence corner as best available evidence after analyzing an EDM traverse of Sec. 3.



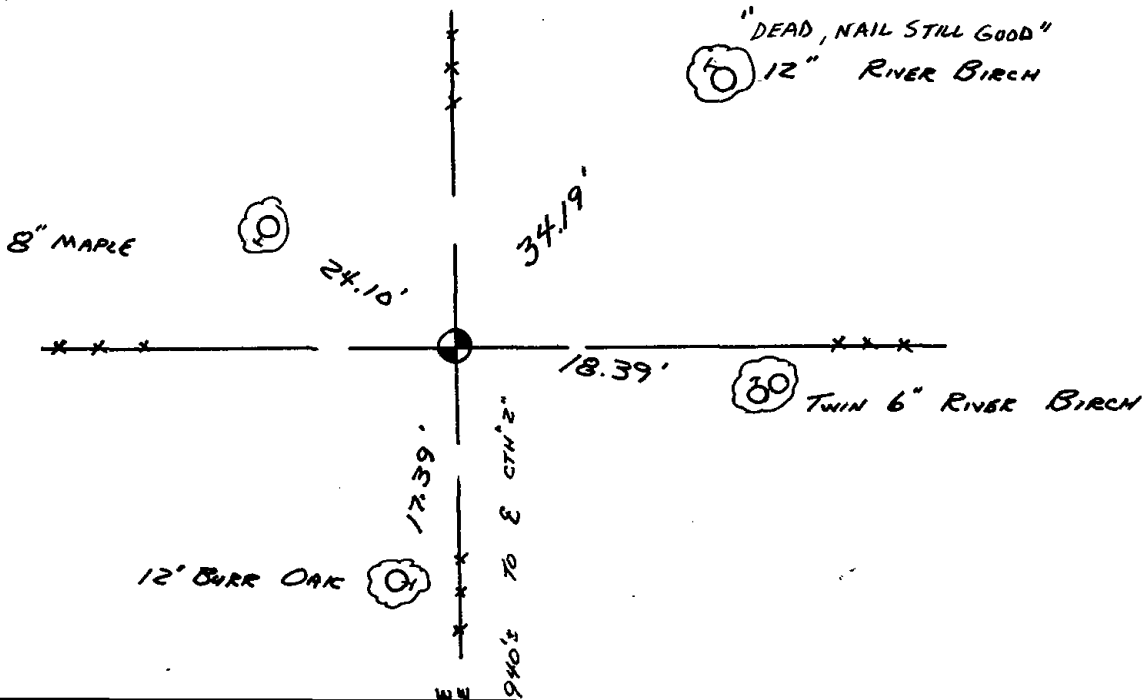
CORNER LOCATION IS NOT AT THIS LOCATION CHECK TIE SHEET DTD 11-29-06 (MSA)

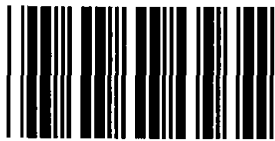
CERTIFIED CORRECT:

Anthony B. Kiedrowski
Registered Land Surveyor
DATE: 6/1/1976

TIE SKETCH

(Show at least four ties)





* 0 0 9 *

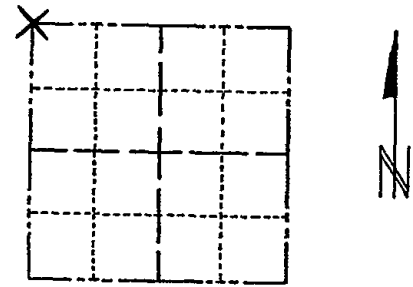
009

ADAMS COUNTY

Survey Monument Record

TYPE OF MONUMENT: 30" HARRISON
 STATE PLANE COORDINATES: N _____
 E _____
 ELEVATION — M.S.L. DATUM: _____
 THETA ANGLE: _____
 FIELD BOOK: _____ PAGE _____

CORNER NO. 339
 SECTION 2
 TOWN 15
 RANGE 5



LOCATION
 (Indicated by 'X')

BASIS FOR MONUMENT LOCATION

(Use reverse side if necessary)

Show info such as: History of corner, with reference to Vol. and pg, dates, surveyor; exact description of monument replaced; if location computed, by taped or EDM traverse; landowner remarks, etc.

Excavated with backhoe. Found $\frac{3}{4}$ " x 24" iron rod. Replaced with Harrison after a traverse of section 3.

SEAL:

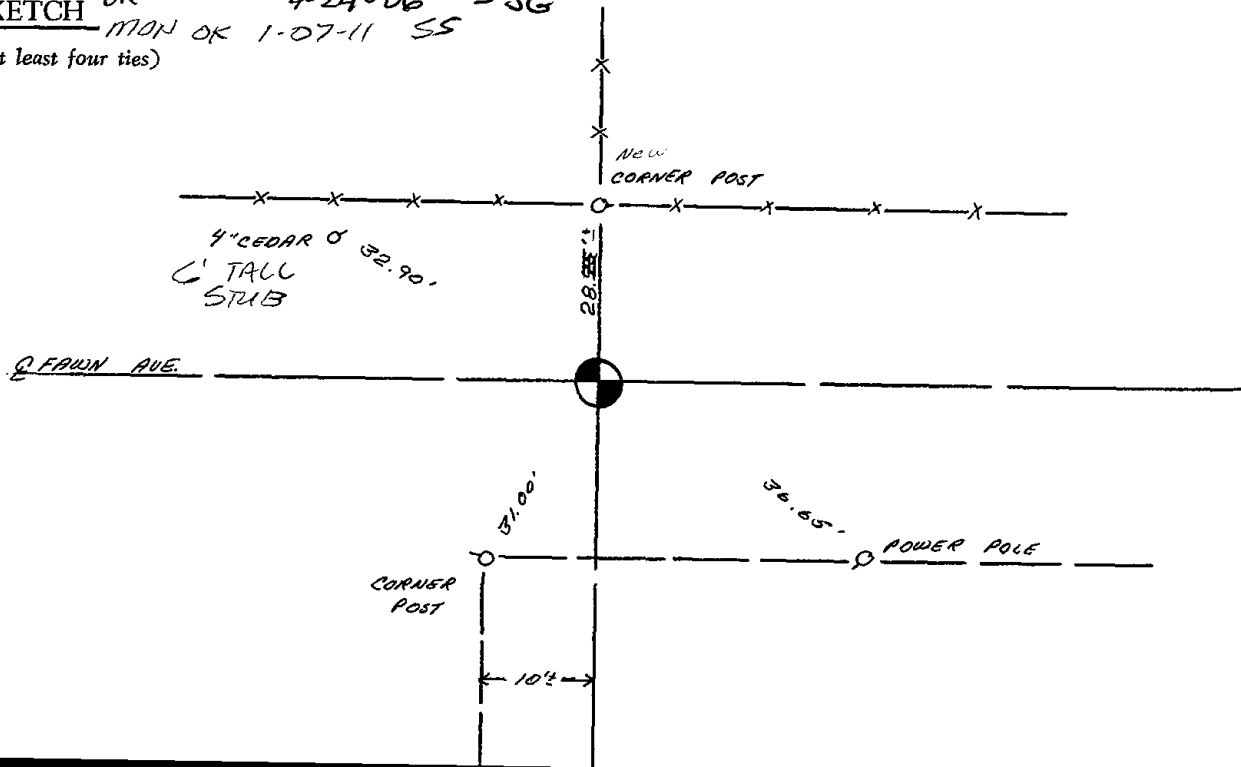


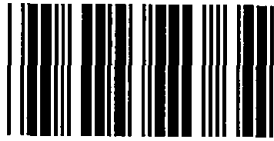
CORNER	J.K.	10-28-75	D.M. - S.S.
"	"	1-28-86	G.R. - S.S.
ALL OK		1-10-91	JG - KZ
OK		1-10-96	JG - SS
OK		1-24-01	JG

CERTIFIED CORRECT:

Anthony B. Kiedrowski
 Registered Land Surveyor
 DATE: Aug. 73

TIE SKETCH OK 4-24-06 - JG
MON OK 1-07-11 SS
 (Show at least four ties)





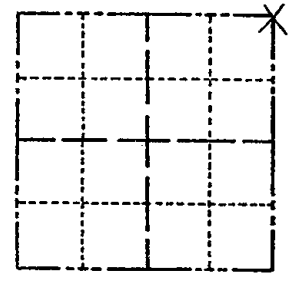
* 0 1 3 *

013

Government Land Corner Certificate

_____ County
 TYPE OF MONUMENT: HARRISON
 STATE PLANE COORDINATES: N _____
 E _____
 ELEVATION — M.S.L. DATUM: _____
 THETA ANGLE: _____
 FIELD BOOK: 54 PAGE 65 a
 DRAWN BY: K. VICKER

CORNER NO. 13
 SECTION 1
 TOWN 15
 RANGE 5



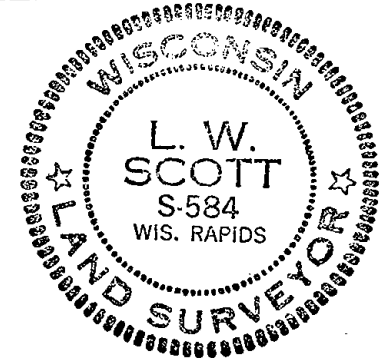
LOCATION
 (Indicated by 'X')

BASIS FOR MONUMENT LOCATION

Show info such as: History of corner, with reference to Vol. and pg., dates, surveyor; exact description of monument replaced; if location computed, by taped or EDM traverse; landowner remarks, etc. (Use reverse side if necessary)

In setting this township corner, Tony dug in this area and found nothing. From a known corner to the South measured distance North to the town line and single proportioned the distance against the government distance and set all section corners and quarter corners on a straight line. In doing so, all corners fell very close to the government distance and local property lines. (Thank goodness for small favors.) Ties to nail and discs.

SEAL:



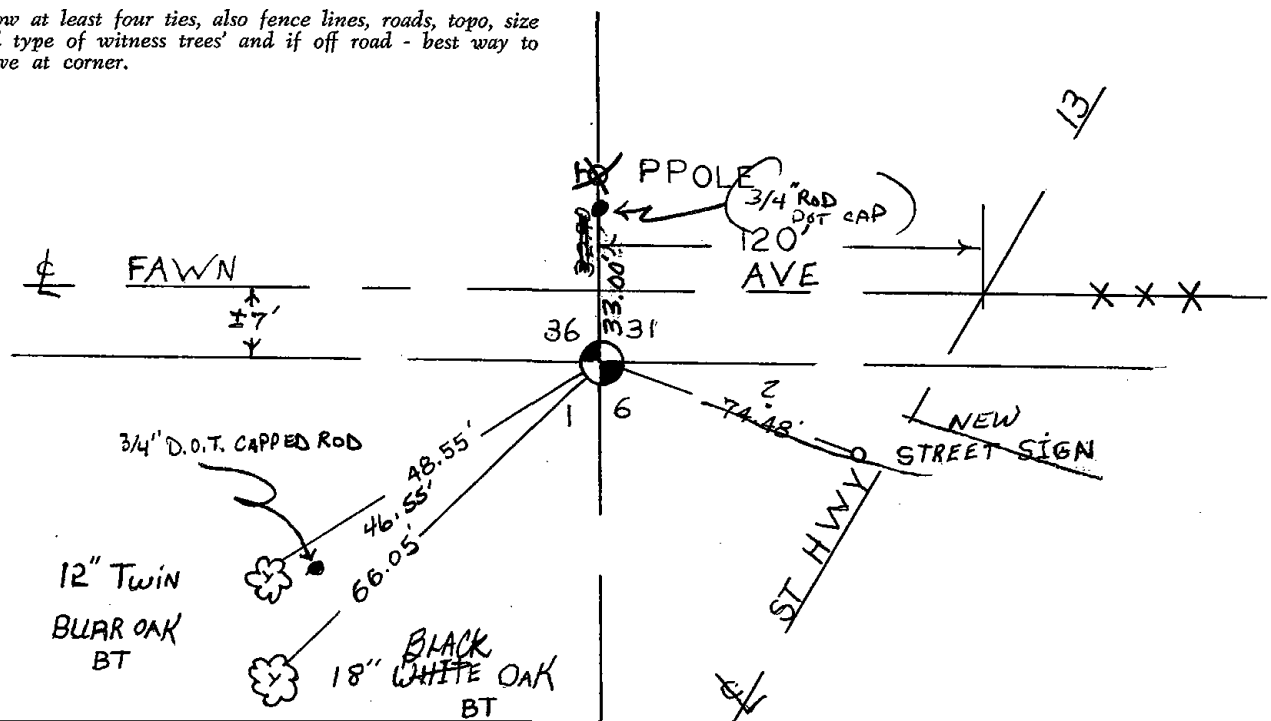
DATA SHOWN HERE ON
 CERTIFIED CORRECT:

L. W. Scott
 Registered Land Surveyor

DATE: 10/31/80

TIE SKETCH

Show at least four ties, also fence lines, roads, topo, size and type of witness trees' and if off road - best way to arrive at corner.





* 0 1 7 *

017

Government Land Corner Certificate

MC #11

ADAMS _____ County

CORNER NO. 17

SECTION 3

TOWN 15

RANGE 5

TYPE OF MONUMENT: 1 1/2" x 30" Iron Rod

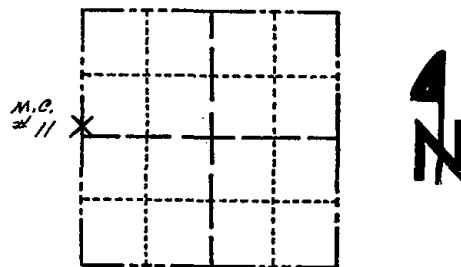
STATE PLANE COORDINATES: N _____
E _____

ELEVATION — M.S.L. DATUM: _____

THETA ANGLE: _____

FIELD BOOK: SS 5 PAGE 94

DRAWN BY: _____



LOCATION
(Indicated by 'X')

SEAL:



DATA SHOWN HERE ON
CERTIFIED CORRECT:

Gregory P. Rhinehart
Registered Land Surveyor

DATE: 1-3-82

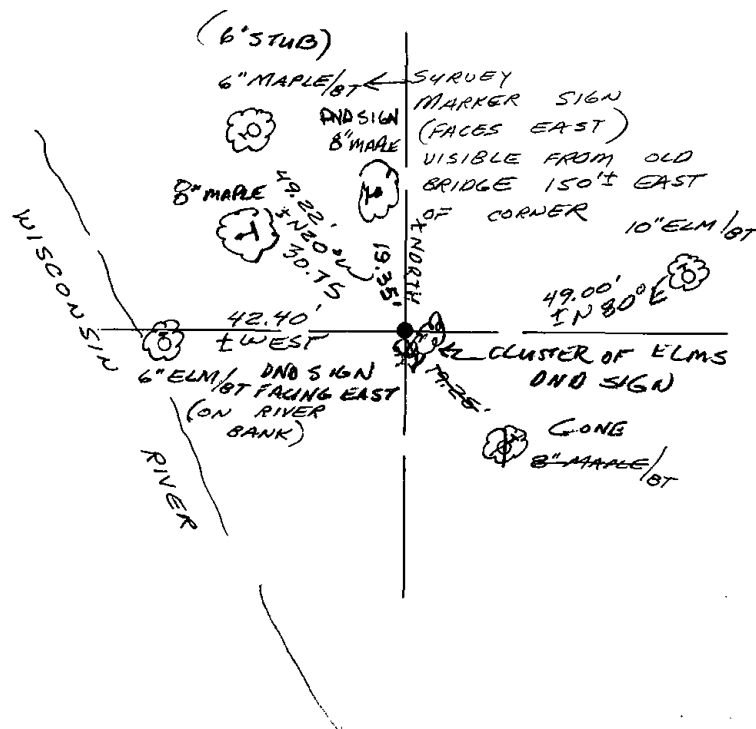
BASIS FOR MONUMENT LOCATION

Show info such as: History of corner, with reference to Vol. and pg., dates, surveyor; exact description of monument replaced; if location computed, by taped or EDM traverse; landowner remarks, etc. (Use reverse side if necessary)

Extended the section line as determined by Springville Assessor's Plat No. 3 to record distance at river bank. Thorough search yielded no evidence of any previous monumentation. 1 1/2" x 30" Iron Rod set at record distance on section line as determined by Assessor's Plat.

TIE SKETCH

Show at least four ties, also fence lines, roads, topo, size and type of witness trees and if off road - best way to arrive at corner.



MAINTENANCE RECORD

Date	Init.	Remarks
1-28-86	GR-SS	OK
1-15-96	JG-SS	OK - TREES REBUZED
2-2-01	JG-SS	2-NEW, 1-GONE
4-24-06	JG	OK
1-07-11	SS	OK



* 0 1 8 *

018

Government Land Corner Certificate

Adams County

TYPE OF MONUMENT: Harrison

STATE PLANE COORDINATES: N _____

E _____

ELEVATION — M.S.L. DATUM: _____

THETA ANGLE: _____

FIELD BOOK: 57 PAGE 144

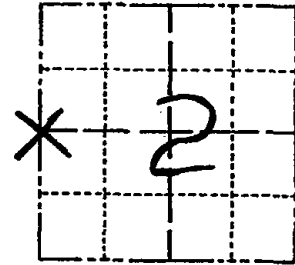
DRAWN BY: T.H.

CORNER NO. 18

SECTION 2

TOWN 15

RANGE 5



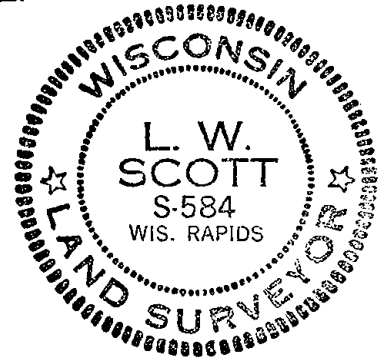
LOCATION
(Indicated by 'X')

BASIS FOR MONUMENT LOCATION

Show info such as: History of corner, with reference to Vol. and pg., dates, surveyor; exact description of monument replaced; if location computed, by taped or EDM traverse; landowner remarks, etc. (Use reverse side if necessary)

Corner set proportionate between the Section corner to the North and the Section corner to the South, and on line. Note: No evidence could be found because of plowed fields all around.

SEAL:



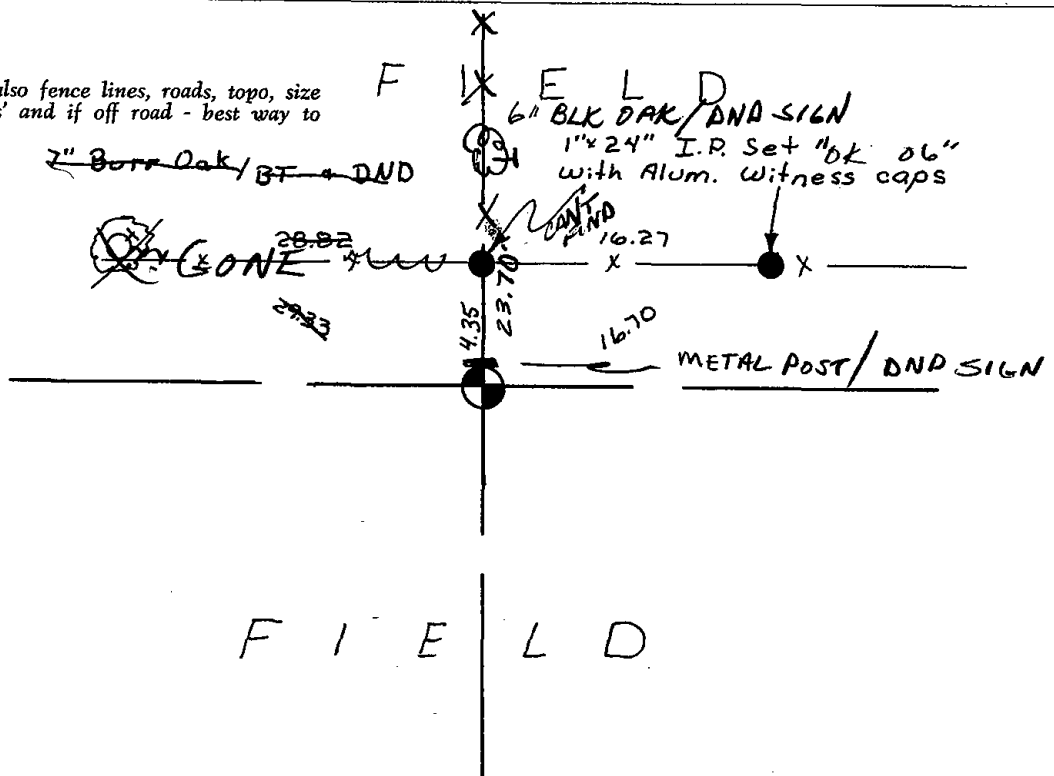
DATA SHOWN HERE ON
CERTIFIED CORRECT:

L. W. Scott
Registered Land Surveyor

DATE: 1/6/81

TIE SKETCH

Show at least four ties, also fence lines, roads, topo, size and type of witness trees and if off road - best way to arrive at corner.





019

Government Land Corner Certificate

ADAMS County

TYPE OF MONUMENT: HARRISON

STATE PLANE COORDINATES: N _____
E _____

ELEVATION — M.S.L. DATUM: _____

THETA ANGLE: _____

FIELD BOOK: 54 PAGE 66

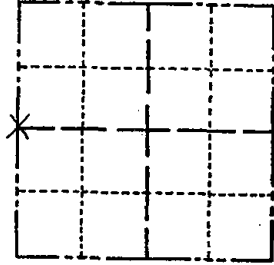
DRAWN BY: K. VICKER

CORNER NO. 19

SECTION 1

TOWN 15

RANGE 5



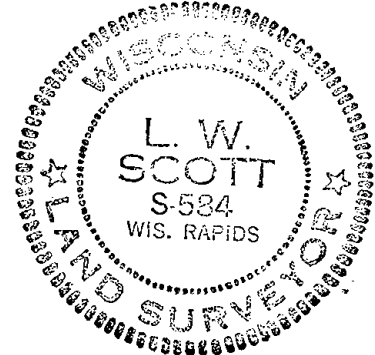
LOCATION
(Indicated by 'X')

BASIS FOR MONUMENT LOCATION

Show info such as: History of corner, with reference to Vol. and pg., dates, surveyor; exact description of monument replaced; if location computed, by taped or EDM traverse; landowner remarks, etc. (Use reverse side if necessary)

Set this West quarter corner proportional between the two section corners and on line because it fit very good to local conditions like fences and wood lines. (Tony dug in this area and found nothing or any evidence of a corner.) Ties to nail and discs.

SEAL:



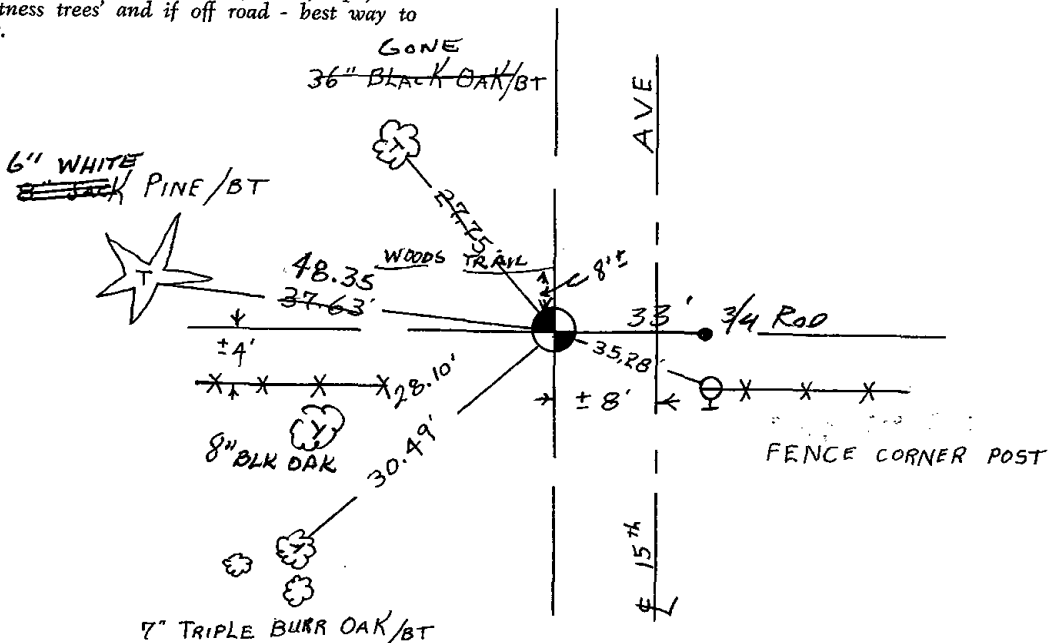
DATA SHOWN HERE ON
CERTIFIED CORRECT:

L. W. Scott
Registered Land Surveyor

DATE: 10/31/80

TIE SKETCH

Show at least four ties, also fence lines, roads, topo, size and type of witness trees and if off road - best way to arrive at corner.





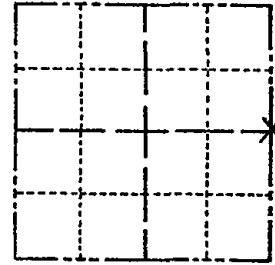
* 0 2 0 *

020

Government Land Corner Certificate

County _____
 TYPE OF MONUMENT: ~~MARKER~~ Set P.K. Nail
 STATE PLANE COORDINATES: N _____
 E _____
 ELEVATION — M.S.L. DATUM: _____
 THETA ANGLE: _____
 FIELD BOOK: 54 PAGE 65
 DRAWN BY: KEN VICKER

CORNER NO. 20
 SECTION 1
 TOWN 15
 RANGE 5



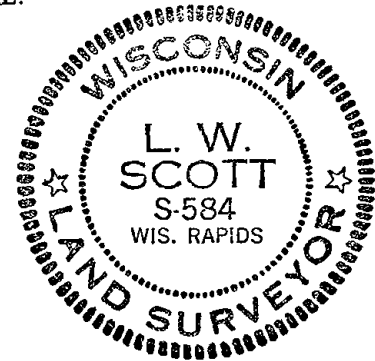
LOCATION
(Indicated by 'X')

BASIS FOR MONUMENT LOCATION

Show info such as: History of corner, with reference to Vol. and pg., dates, surveyor; exact description of monument replaced; if location computed, by taped or EDM traverse; landowner remarks, etc. (Use reverse side if necessary)

Set quarter corner proportional from township corner common to sections 1, 6, 31, and 36, South after a lengthy survey of the range line for 2 1/2 miles and found no evidence of corners. Use the local fence and some local descriptions to set these corners. Ties to nails and discs.

SEAL:



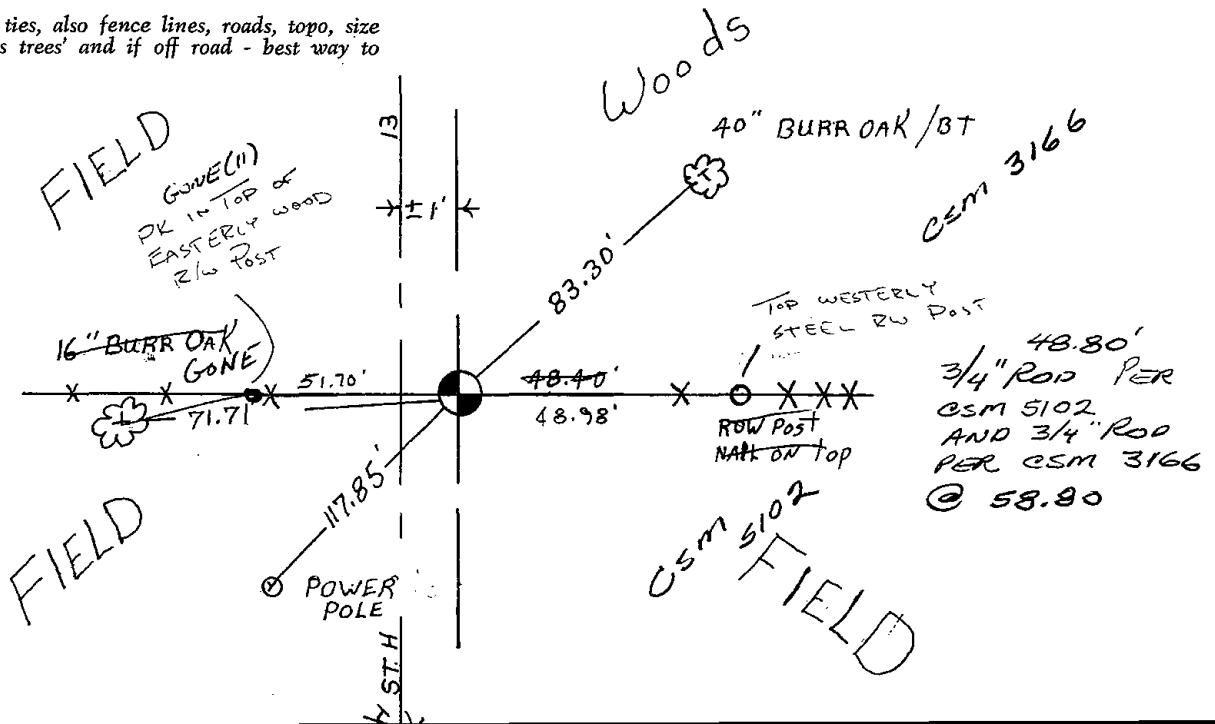
DATA SHOWN HERE ON
CERTIFIED CORRECT:

L. W. Scott
Registered Land Surveyor

DATE: 10/31/80

TIE SKETCH

Show at least four ties, also fence lines, roads, topo, size and type of witness trees' and if off road - best way to arrive at corner.





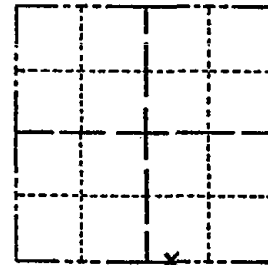
* 0 2 8 *

028

Government Land Corner Certificate

ADAMS County
 TYPE OF MONUMENT: 1 1/4" Iron Rod
 STATE PLANE COORDINATES: N _____
 E _____
 ELEVATION — M.S.L. DATUM: _____
 THETA ANGLE: _____
 FIELD BOOK: 5 PAGE 95
 DRAWN BY: SS

CORNER NO. 28
 SECTION 3
 TOWN 15
 RANGE 5



LOCATION M.C. #12
 (Indicated by 'X')

BASIS FOR MONUMENT LOCATION

Show info such as: History of corner, with reference to Vol. and pg., dates, surveyor; exact description of monument replaced; if location computed, by taped or EDM traverse; landowner remarks, etc. (Use reverse side if necessary)

SEAL:



DATA SHOWN HERE ON
 CERTIFIED CORRECT

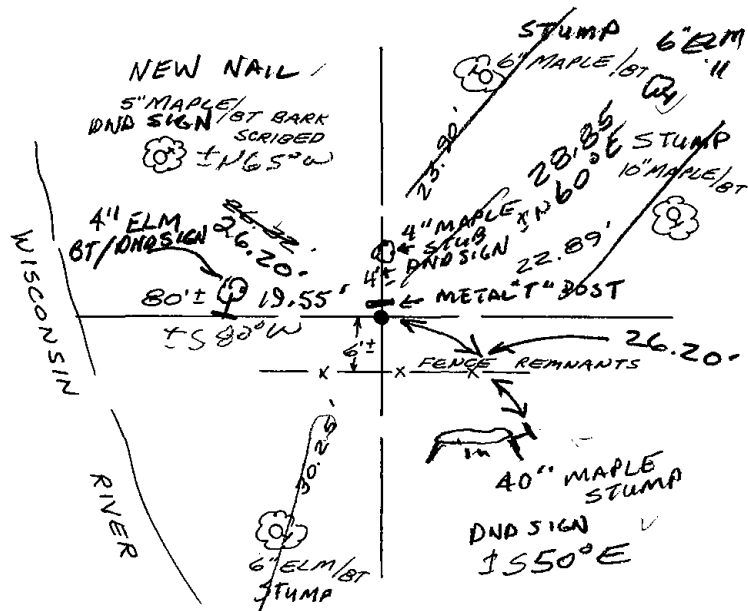
Gregory P. Rhinehart
 Registered Land Surveyor

DATE: 1-3-82

Found 1 1/4" Iron Rod set by John Brey after retracing Springville Assessor's Plat No. 3, accepted same.

TIE SKETCH

Show at least four ties, also fence lines, roads, topo, size and type of witness trees' and if off road - best way to arrive at corner.

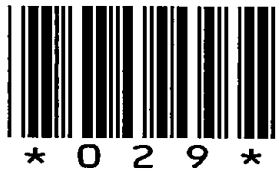


MAINTENANCE RECORD

Date	Init.	Remarks
1-28-86	GR-SS	APPEARS OK. (UNDERWATER)
1-15-90	J-SS	OK / TREES RE-BLAZED
1-24-01	JG	OK
4-24-06	JG	RETIED (AREA CUT OFF)
1-07-11	SS	1 NEW TIE

filed for record this... 12th
day of Jan 1983
per 59.60 Wisconsin Statutes.

[Signature]
.....
ADAMS COUNTY SURVEYOR



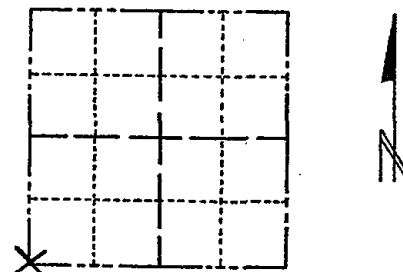
029

ADAMS COUNTY

Survey Monument Record

TYPE OF MONUMENT: 30" HARRISON
STATE PLANE COORDINATES: N
E
ELEVATION - M.S.L. DATUM:
THETA ANGLE:
FIELD BOOK: PAGE

CORNER NO. 340
SECTION 2
TOWN 15
RANGE 5



LOCATION (Indicated by 'X')

SEAL:

BASIS FOR MONUMENT LOCATION

(Use reverse side if necessary)

Show info such as: History of corner, with reference to Vol. and pg, dates, surveyor; exact description of monument replaced; if location computed, by taped or EDM traverse; landowner remarks, etc.

Excavated with backhoe. Found 3" x 6" x 16" stone. Lowered stone and set Harrison on top.

Corner 8 ties in good condition 2-31-76 GR-SS
1-28-86 GR-SS
DK 1-15-96 JG-SS
OK 1-24-01 - JG
1-GONE, 2-NEW TIES, 4-24-06 - JG
OK 1-07-11 SS

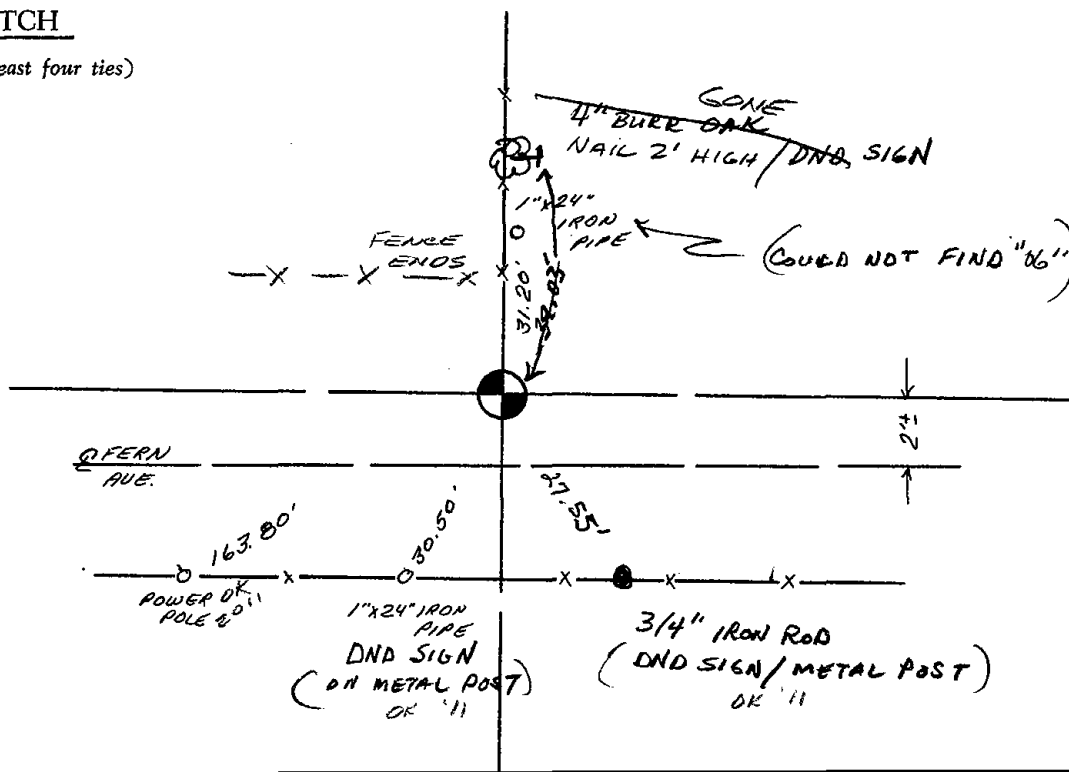


CERTIFIED CORRECT:

Signature of Anthony B. Kiedrowski
Registered Land Surveyor
Aug. 73
DATE:

TIE SKETCH

(Show at least four ties)





030

Government Land Corner Certificate

Adams County

CORNER NO. 30
 SECTION 2
 TOWN 15
 RANGE 5

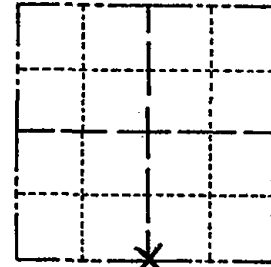
TYPE OF MONUMENT: Harrison
 STATE PLANE COORDINATES: N _____
 E _____

ELEVATION — M.S.L. DATUM: _____

THETA ANGLE: _____

FIELD BOOK: 76 (102) PAGE 22 (78)

DRAWN BY: N. J.



LOCATION
(Indicated by 'X')

BASIS FOR MONUMENT LOCATION

Show info such as: History of corner, with reference to Vol. and pg., dates, surveyor; exact description of monument replaced; if location computed, by taped or EDM traverse; landowner remarks, etc. (Use reverse side if necessary)

SEAL:



No record of resurveys. Excavated with backhoe, found 2 x 5 x 10" dark red sandstone. Replaced stone with Harrison monument. Set stone found alongside east side thereof.

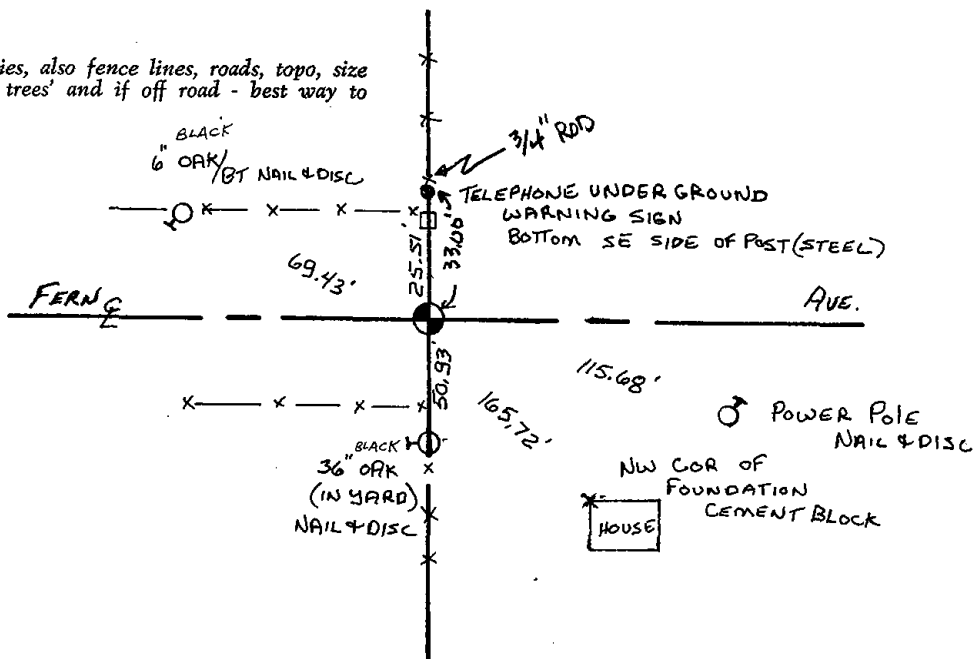
DATA SHOWN HERE ON
CERTIFIED CORRECT:

Anthony B. Kiedrowski
Registered Land Surveyor

DATE: 5/27/80

TIE SKETCH

Show at least four ties, also fence lines, roads, topo, size and type of witness trees and if off road - best way to arrive at corner.





031

Government Land Corner Certificate

ADAMS County

TYPE OF MONUMENT: HARRISON

STATE PLANE COORDINATES: N _____
E _____

ELEVATION — M.S.L. DATUM: _____

THETA ANGLE: _____

FIELD BOOK: 54 PAGE 66 a

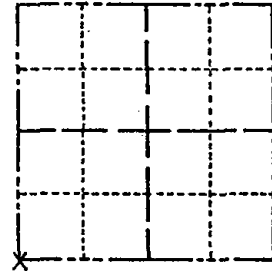
DRAWN BY: K. VICKER

CORNER NO. 31

SECTION 1

TOWN 15

RANGE 5

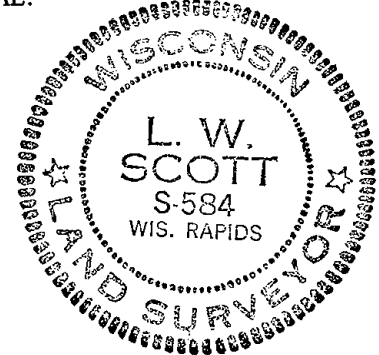


BASIS FOR MONUMENT LOCATION

Show info such as: History of corner, with reference to Vol. and pg., dates, surveyor; exact description of monument replaced; if location computed, by taped or EDM traverse; landowner remarks, etc. (Use reverse side if necessary)

Set Harrison for section corner after finding no evidence of any corner in this area. (Tony dug with back hoe in this area and found nothing.) The Section was set by double proportioning. Ties to nails and discs.

SEAL:



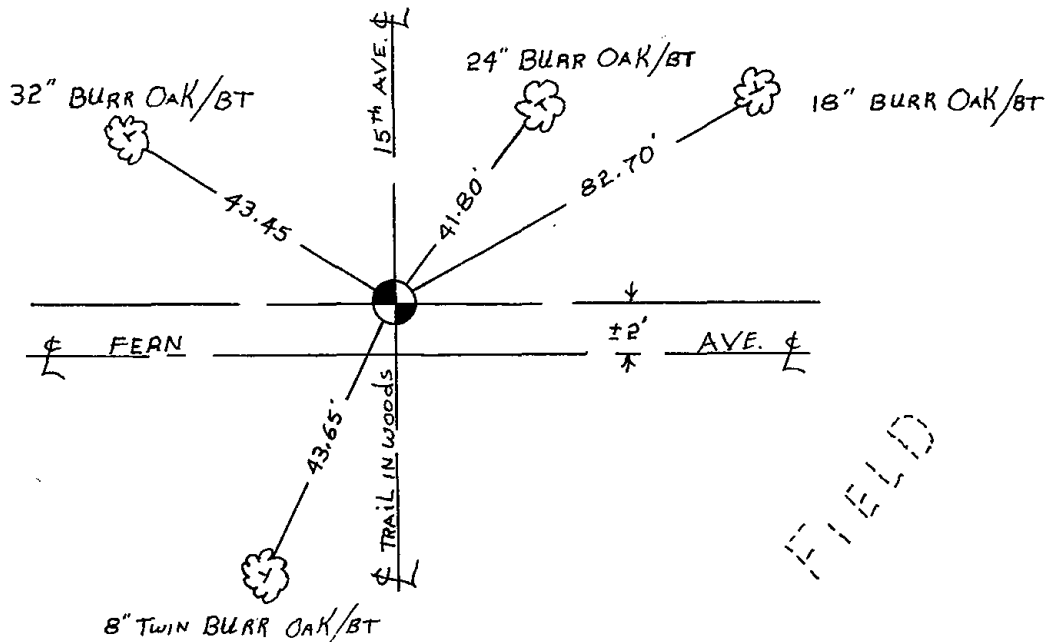
DATA SHOWN HERE ON CERTIFIED CORRECT:

L. W. Scott
Registered Land Surveyor

DATE: 10/31/80

TIE SKETCH

Show at least four ties, also fence lines, roads, topo, size and type of witness trees and if off road - best way to arrive at corner.



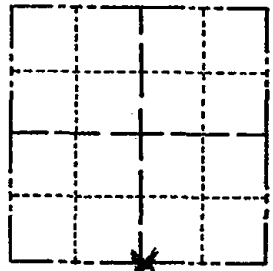


032

Government Land Corner Certificate

ADAMS County
 TYPE OF MONUMENT: STANDARD HARRISON
 STATE PLANE COORDINATES: N _____
 E _____
 ELEVATION — M.S.L. DATUM: _____
 THETA ANGLE: _____
 FIELD BOOK: 83 PAGE 131
 DRAWN BY: PAUL KIEDROWSKI

CORNER NO. 32
 SECTION 1
 TOWN 15
 RANGE 5



LOCATION
 (Indicated by 'X')

BASIS FOR MONUMENT LOCATION

Show info such as: History of corner, with reference to Vol. and pg., dates, surveyor; exact description of monument replaced; if location computed, by taped or EDM traverse; landowner remarks, etc. (Use reverse side if necessary)

No record of resurveys. Excavated with backhoe and found 6 x 6 x 12" squared off white sandstone. Lowered stone, set Harrison monument on top.

SEAL:



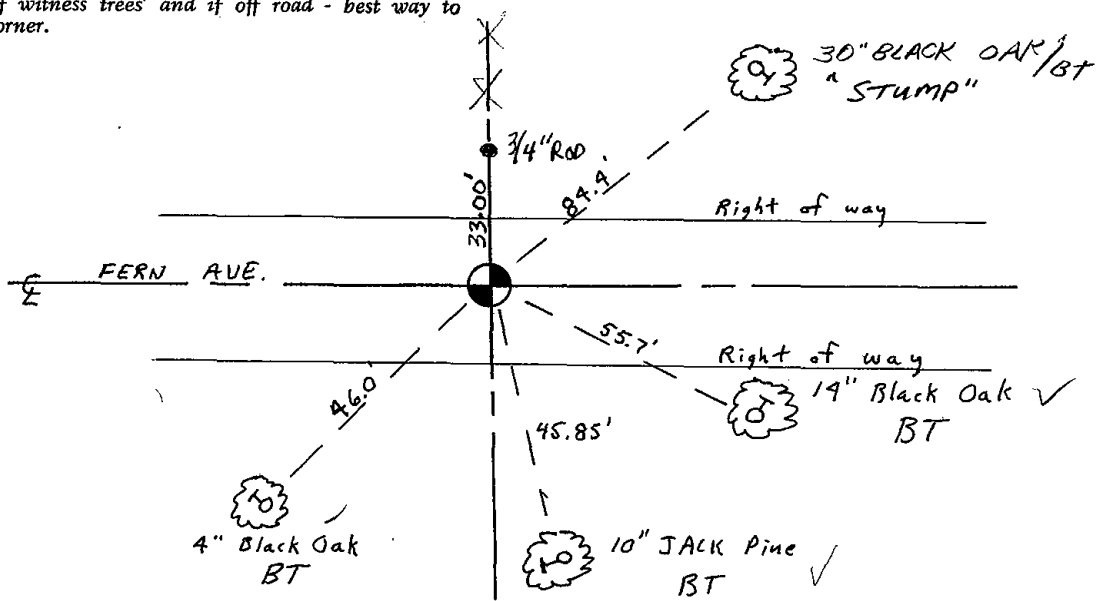
DATA SHOWN HERE ON
 CERTIFIED CORRECT:

Anthony B. Kiedrowski
 Registered Land Surveyor

DATE: 5/27/80

TIE SKETCH

Show at least four ties, also fence lines, roads, topo, size and type of witness trees and if off road - best way to arrive at corner.



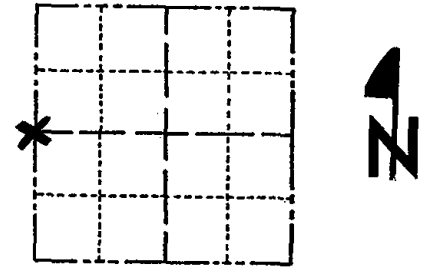


038

Government Land Corner Certificate

ADAMS County
 TYPE OF MONUMENT: HARRISON
 STATE PLANE COORDINATES: N _____
 E _____
 ELEVATION — M.S.L. DATUM: _____
 THETA ANGLE: _____
 FIELD BOOK: 76 PAGE 60
 DRAWN BY: LANCE J. HASECK

CORNER NO. 38
 SECTION 11
 TOWN 15
 RANGE 5



LOCATION
(Indicated by 'X')

BASIS FOR MONUMENT LOCATION

Show info such as: History of corner, with reference to Vol. and pg., dates, surveyor; exact description of monument replaced; if location computed, by taped or EDM traverse; landowner remarks, etc. (Use reverse side if necessary)

A traverse of several surrounding sections and evaluation of original notes indicates that this is the most likely place for this corner. There was no evidence of possession lines in this area because the land abutting the corner is all owned by one person and has been owned by one person for many years.

SEAL:



DATA SHOWN HERE ON
CERTIFIED CORRECT:

Lance J. Haseck
Registered Land Surveyor

DATE: 2/4/81

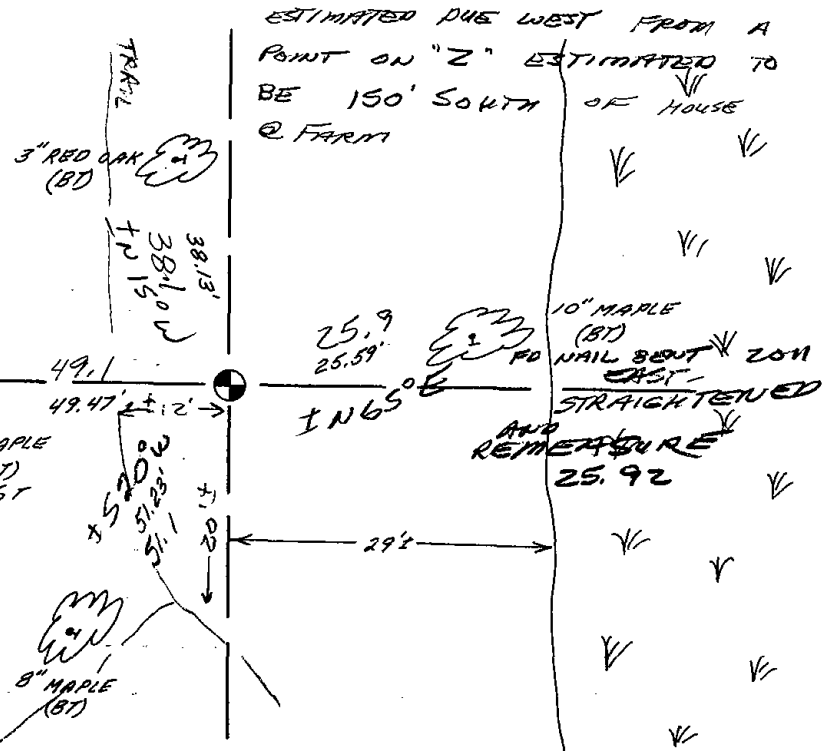
TIE SKETCH

Show at least four ties, also fence lines, roads, topo, size and type of witness trees and if off road - best way to arrive at corner.

FO ALL - MADE NEW BLAZE
 HIGHER THAN OLD - SET NEW
 NAILS IN ALL 2-2-01 SJF

FOUND BARK →
 SCRIBED BT
 STILL VISIBLE & WEST
 2011

MAP.
 ± 12' E. of "RECREATIONAL
 TYPE TRAIL" ± 20' NORTH
 OF FORK IN TRAIL



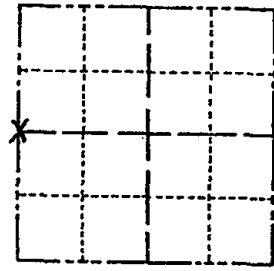


039

Government Land Corner Certificate

ADAMS County
 TYPE OF MONUMENT: HARRISON
 STATE PLANE COORDINATES: N _____
 E _____
 ELEVATION — M.S.L. DATUM: _____
 THETA ANGLE: _____
 FIELD BOOK: 54 PAGE 67
 DRAWN BY: S. KMIEC

CORNER NO. 39
 SECTION 12
 TOWN 15
 RANGE 5



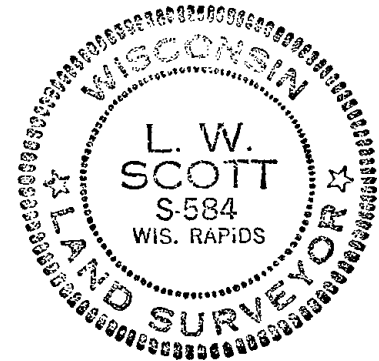
LOCATION
(Indicated by 'X')

BASIS FOR MONUMENT LOCATION

Show info such as: History of corner, with reference to Vol. and pg., dates, surveyor; exact description of monument replaced; if location computed, by taped or EDM traverse; landowner remarks, etc. (Use reverse side if necessary)

Set Harrison on line between the South Section corner and the North Section corner. After a lot of research for the original corner, found 1/2" iron bar in concrete along this line North and South but they were too hard to determine what they were for. There are no descriptions of this corner other than 40 acre tracts. Ties to nail and discs.

SEAL:



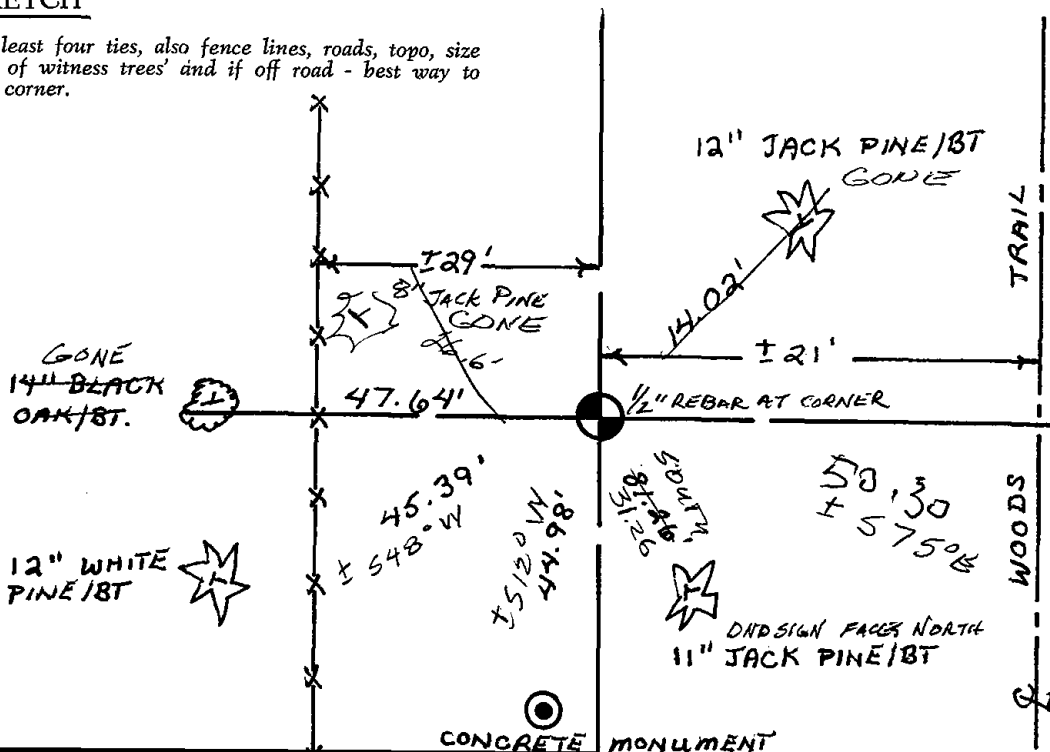
DATA SHOWN HERE ON
CERTIFIED CORRECT:

L. W. Scott
Registered Land Surveyor

DATE: 10/31/80

TIE SKETCH

Show at least four ties, also fence lines, roads, topo, size and type of witness trees and if off road - best way to arrive at corner.





049

ADAMS COUNTY

Survey Monument Record

TYPE OF MONUMENT: 30" SLIMLINE MEANDER COR. HARRISON

STATE PLANE COORDINATES: N _____
E _____

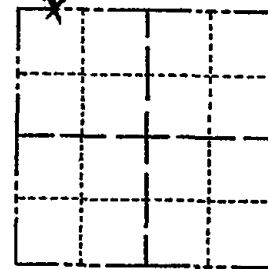
ELEVATION — M.S.L. DATUM: _____

THETA ANGLE: _____

FIELD BOOK: _____ PAGE _____

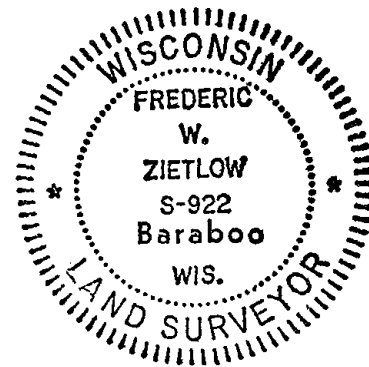
CORNER NO. 958
SECTION 14
TOWN 15N
RANGE 5E

M.P.# 14



LOCATION
(Indicated by 'X')

SEAL:



BASIS FOR MONUMENT LOCATION

(Use reverse side if necessary)

Show info such as: History of corner, with reference to Vol. and pg, dates, surveyor; exact description of monument replaced; if location computed, by taped or EDM traverse; landowner remarks, etc.

CHECKED ADAMS COUNTY SURVEY RECORDS AND FOUND IN VOL. 1 PG. 112 WHERE COUNTY SURVEYOR M.C. SMITH, IN 1909 SET OUT NEW BEARING TREES FOR MEANDER POST No. 14. FOUND ONE OF HIS B.T.'S ALIVE & STANDING. VERIFIED BY RUNNING EDM. TRAVERSE TO NW COR SEC. 13 & N¹/₄ COR. SEC. 13, FIT DIRECTION EXCELLENT.

CERTIFIED CORRECT:

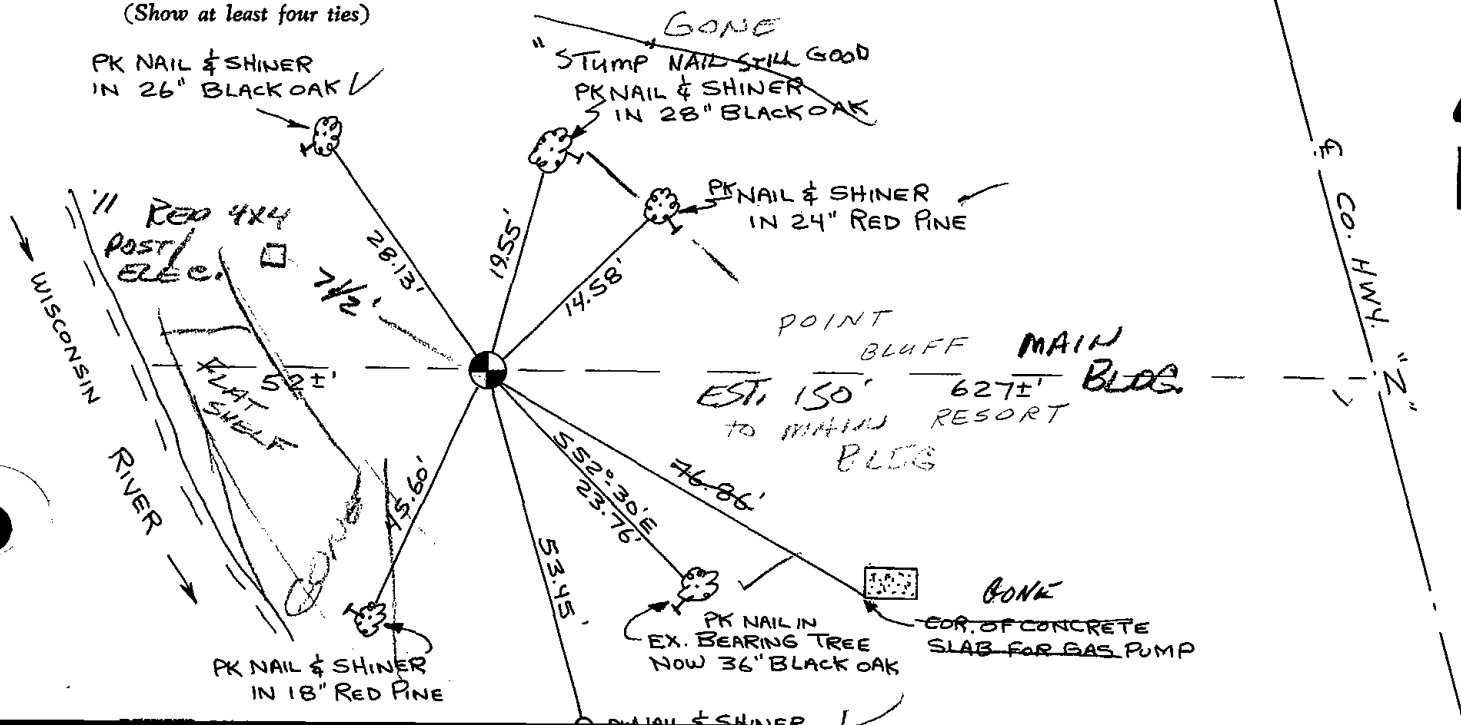
Frederic W. Zietlow

Registered Land Surveyor

DATE: MAY 14, 1976

TIE SKETCH

(Show at least four ties)



MAINTENANCE RECORD

Date	Init.	Remarks
9-8-81	SK-NJ	Ties O.K. all Ties w/ Teeiler Park
1-28-86	GR-SS	" "
1-10-91	KZ-JG	1-GONE ALL ELSE OK
1-24-01	JG	ALL OK
11-29-06	JG-SS	ALL OK



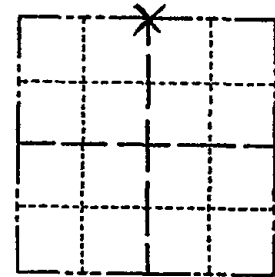
050

ADAMS COUNTY

Survey Monument Record

TYPE OF MONUMENT: 30" HARRISON
 STATE PLANE COORDINATES: N _____
 E _____
 ELEVATION — M.S.L. DATUM: _____
 THETA ANGLE: _____
 FIELD BOOK: _____ PAGE _____

CORNER NO. 959
 SECTION 14
 TOWN 15 N
 RANGE 5 E



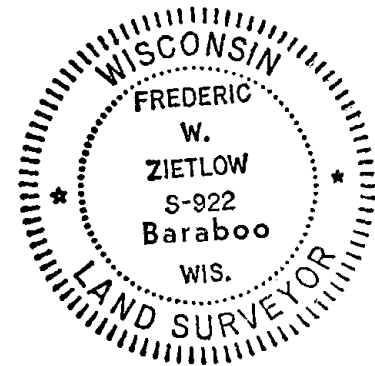
LOCATION
(Indicated by 'X')

BASIS FOR MONUMENT LOCATION

(Use reverse side if necessary)

Show info such as: History of corner, with reference to Vol. and pg, dates, surveyor; exact description of monument replaced; if location computed, by taped or EDM traverse; landowner remarks, etc.

SEAL:



CHECKED COUNTY SURVEY RECORDS AND IN VOL 2 PG. 181 COUNTY SURVEYOR BARRETT SET AN IRON IN 1896, IN 1909 COUNTY SURVEYOR M.C. SET OUT 2 NEW BEARING TREES WITH NO MENTION OF BARRETT'S IRON. WE SPENT MANY HOURS COMBING THIS AREA & COULD NOT FIND BARRETT'S IRON OR ANY TRACE OF M.C. SMITH'S BEARING TREES. WE RE-ESTABLISHED THIS CORNER BY SINGLE PROPORTION BETWEEN THE NE COR. SEC. 14 & M.P. #14 PRORATING M.C. SMITH'S DISTANCES. ACCORDING TO ADJACENT PROPERTY OWNERS THIS CORNER IS ABOUT WHERE THEY HAD BEEN TOLD THAT IS WAS. FIT EDM TRAVERSE GOOD.

CERTIFIED CORRECT:

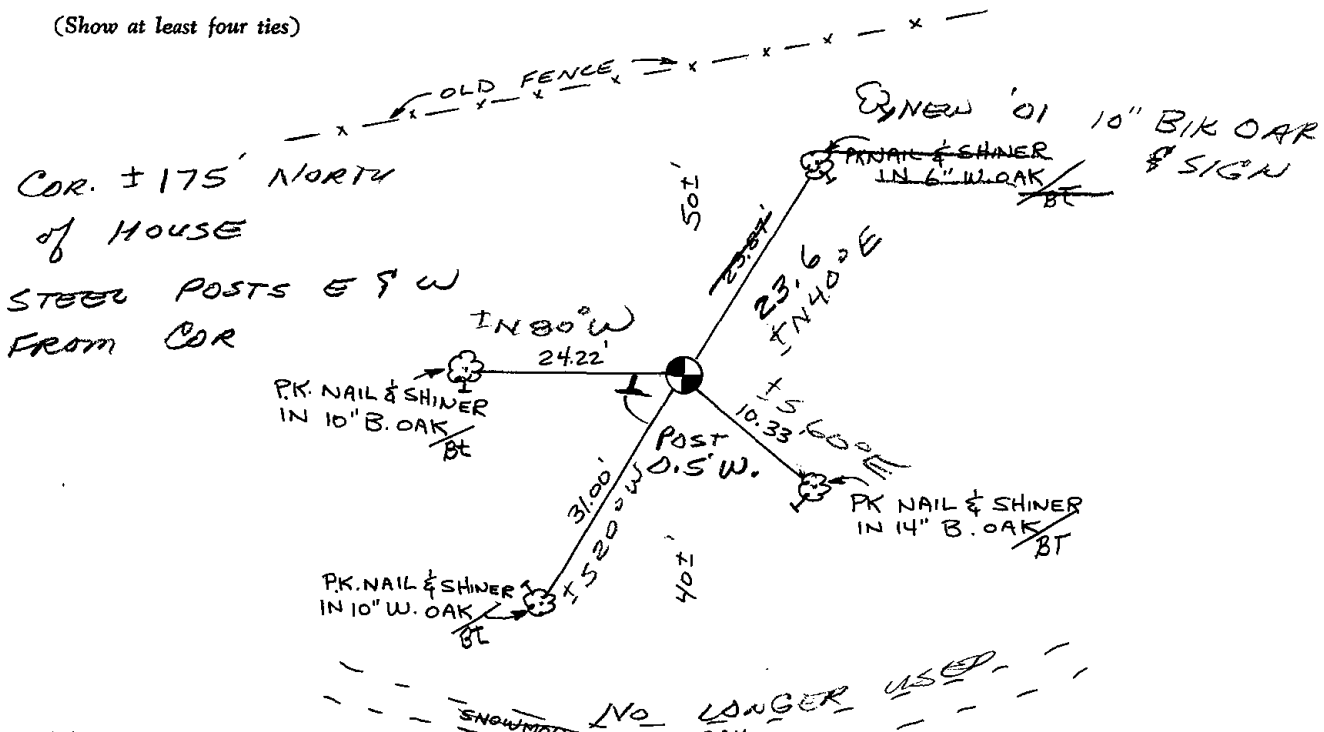
Frederic W. Zietlow

Registered Land Surveyor

DATE: MAY 14, 1976

TIE SKETCH

(Show at least four ties)



MAINTENANCE RECORD

Date	Init.	Remarks
9-8-81	SK-NJ	WOW + TIES OK.
2-5-01	SS	1 NEW TIE
11-29-06	JG-SS	ALL OK
01-14-11	SS	" 4



051

ADAMS COUNTY

Survey Monument Record

TYPE OF MONUMENT: 5" CONCRETE MARKER WITH BRASS CAP

STATE PLANE COORDINATES: N _____

E _____

ELEVATION — M.S.L. DATUM: _____

THETA ANGLE: _____

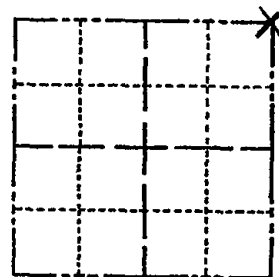
FIELD BOOK: _____ PAGE _____

CORNER NO. 960

SECTION 14

TOWN 15N

RANGE 5E



LOCATION
(Indicated by 'X')

SEAL:

BASIS FOR MONUMENT LOCATION

(Use reverse side if necessary)

Show info such as: History of corner, with reference to Vol. and pg, dates, surveyor; exact description of monument replaced; if location computed, by taped or EDM traverse; landowner remarks, etc.



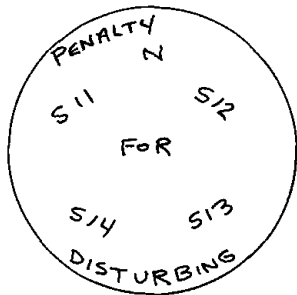
CERTIFIED CORRECT:

Frederick W. Zietlow

Registered Land Surveyor

DATE: MAY 14, 1976

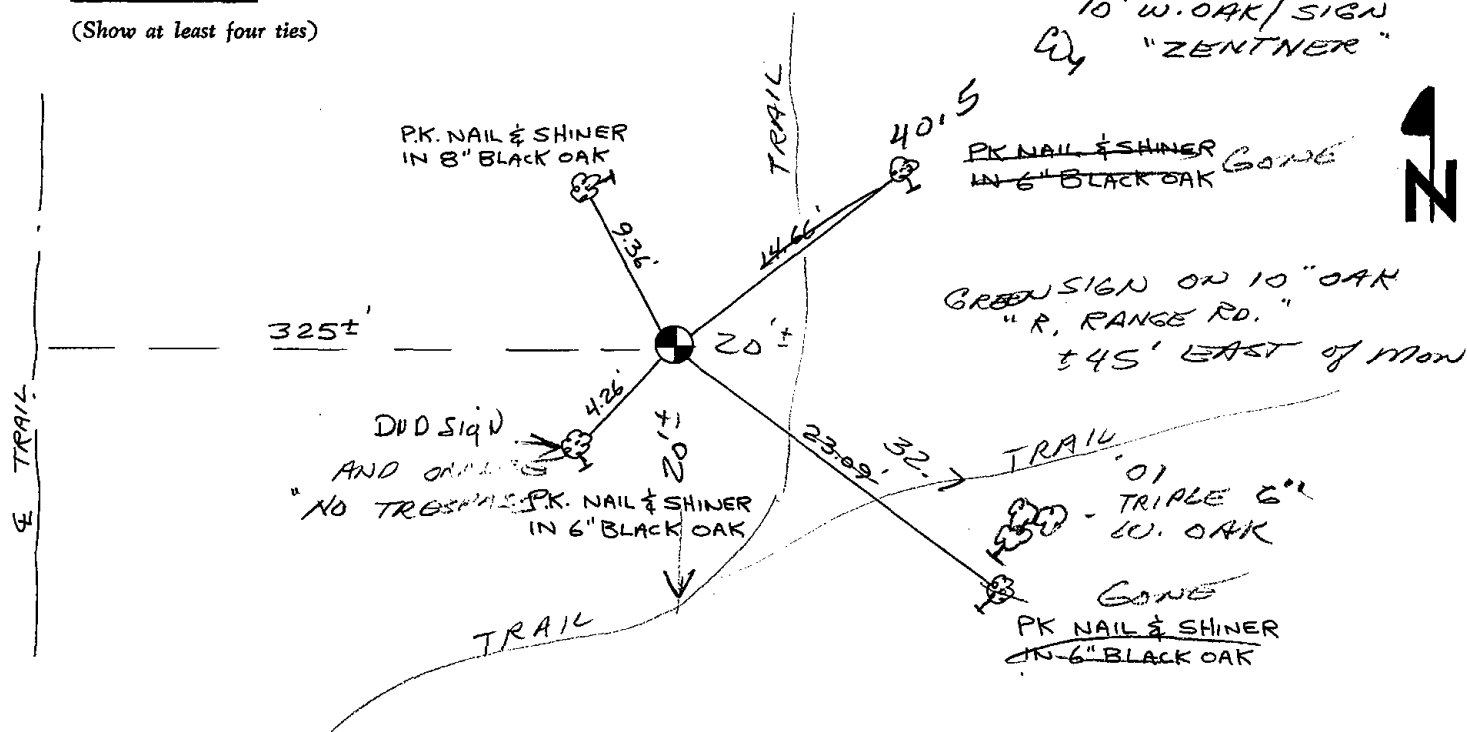
FOUND A CONCRETE MONUMENT & ACCEPTED AS CORNER. VERIFIED WITH EDM. TRAVERSE. 2 BEARING TREES VOL. 1 PG. 100 (1908) & 1 BEARING TREE VOL. 1 PG. 38 (1904) ARE ON FILE IN THE ADAMS COUNTY SURVEY RECORDS. THERE IS NO TRACE OF ANY OF THESE TREES LEFT.



TOP OF BRASS CAP ON CONCRETE MONUMENT UP 12"

TIE SKETCH

(Show at least four ties)





052

ADAMS COUNTY

Survey Monument Record

TYPE OF MONUMENT: 5" CONCRETE MARKER WITH BRASS CAP

STATE PLANE COORDINATES: N _____

E _____

ELEVATION — M.S.L. DATUM: _____

THETA ANGLE: _____

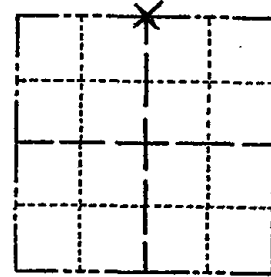
FIELD BOOK: _____ PAGE _____

CORNER NO. 961 ⁽²⁾

SECTION 13

TOWN 15N

RANGE 5E



LOCATION
(Indicated by 'X')

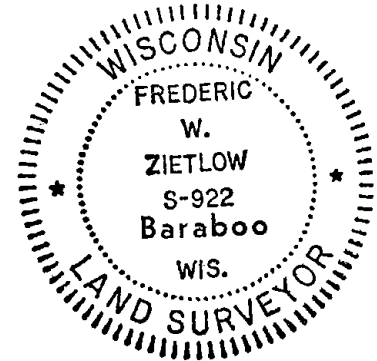
BASIS FOR MONUMENT LOCATION

(Use reverse side if necessary)

Show info such as: History of corner, with reference to Vol. and pg, dates, surveyor; exact description of monument replaced; if location computed, by taped or EDM traverse; landowner remarks, etc.

FOUND A CONCRETE MONUMENT AND ACCEPTED AS CORNER. VERIFIED BY FINDING STANDING BEARING TREE AS CALLED FOR IN VOL. 2 P. 126 OF ADAMS COUNTY SURVEY RECORDS (CO. SURVEYOR ZENNO WISE 1876). EDM. TRAVERSE.

SEAL:

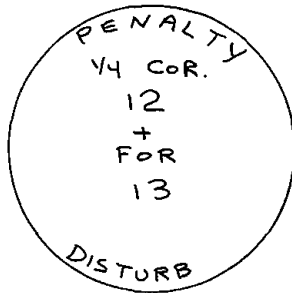


CERTIFIED CORRECT:

Frederic W. Zietlow

Registered Land Surveyor

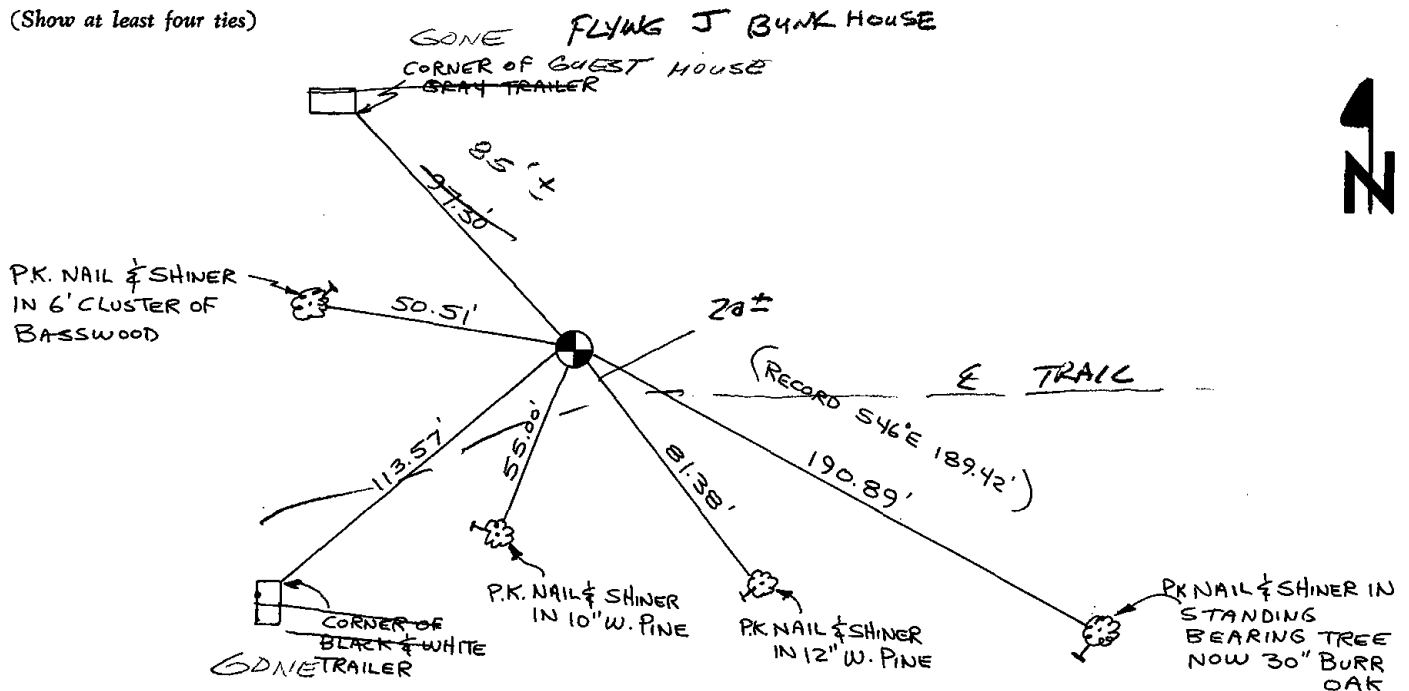
DATE: MAY 14, 1976



TOP OF BRASS CAP ON CONCRETE MONUMENT UP 4"

TIE SKETCH

(Show at least four ties)





059

Government Land Corner Certificate

ADAMS County

TYPE OF MONUMENT: HARRISON

STATE PLANE COORDINATES: N 43° 46' 55.2"
 HAND HELD GPS W 89° 51' 27.6"

ELEVATION — M.S.L. DATUM: _____

THETA ANGLE: _____

FIELD BOOK: 92 PAGE 81

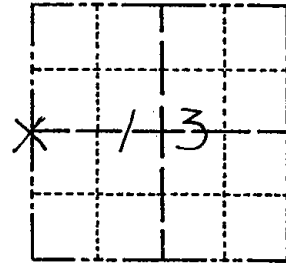
DRAWN BY: S.J.H.

CORNER NO. 59

SECTION 13

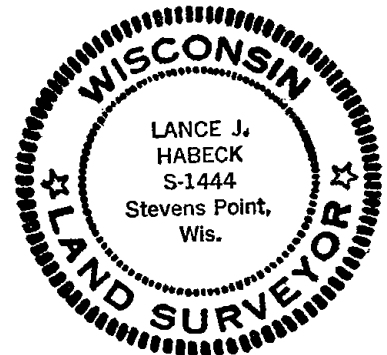
TOWN 15

RANGE 5



LOCATION
(Indicated by 'X')

SEAL:



DATA SHOWN HERE ON
CERTIFIED CORRECT:

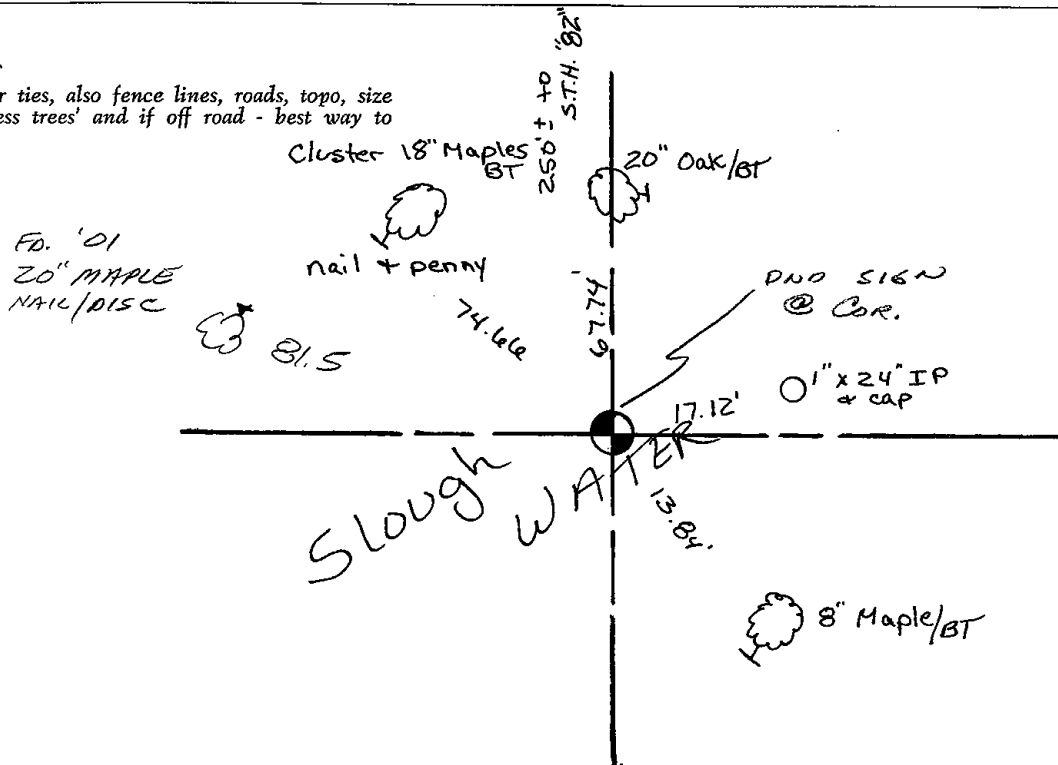
Lance J. Habeck
Registered Land Surveyor

DATE: 6/1/82

A theoretical location was computed for the southwest corner of Sec. 13 by extending and doubling the line from the southeast corner of Sec. 13 to the south quarter corner. The west quarter corner was set equidistant and on line between the northwest corner of Sec. 13 and the computed southwest corner of Sec. 13. This location matches the distance given in the original notes from the corner, northward to the bluff line.

TIE SKETCH

Show at least four ties, also fence lines, roads, topo, size and type of witness trees' and if off road - best way to arrive at corner.





071

Government Land Corner Certificate

ADAMS County

TYPE OF MONUMENT: 1 1/4" X 30" Rebar

STATE PLANE COORDINATES: N _____
E _____

ELEVATION — M.S.L. DATUM: _____

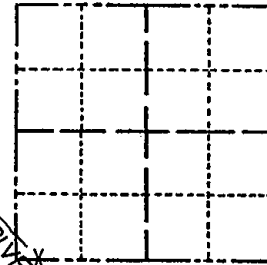
THETA ANGLE: _____

FIELD BOOK: Loose Keaf PAGE _____

DRAWN BY: S. Sorensen

CORNER NO. 71 A
SECTION 13
TOWN 15
RANGE 5

M.C. 16

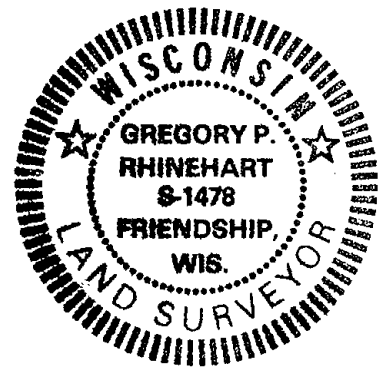


BASIS FOR MONUMENT LOCATION

Show info such as: History of corner, with reference to Vol. and pg., dates, surveyor; exact description of monument replaced; if location computed, by taped or EDM traverse; landowner remarks, etc. (Use reverse side if necessary)

Set monument at the record original distance west of the South Quarter corner of section 13 and on an extension of the south line of the Southeast Quarter of section 13. Diligent search in this area yielded no evidence of either the original monument, bearing trees, monuments placed by Zenus Wise, Adams County Surveyor 1870-1878, in his survey of August 1876, or any signs of possession.

SEAL:



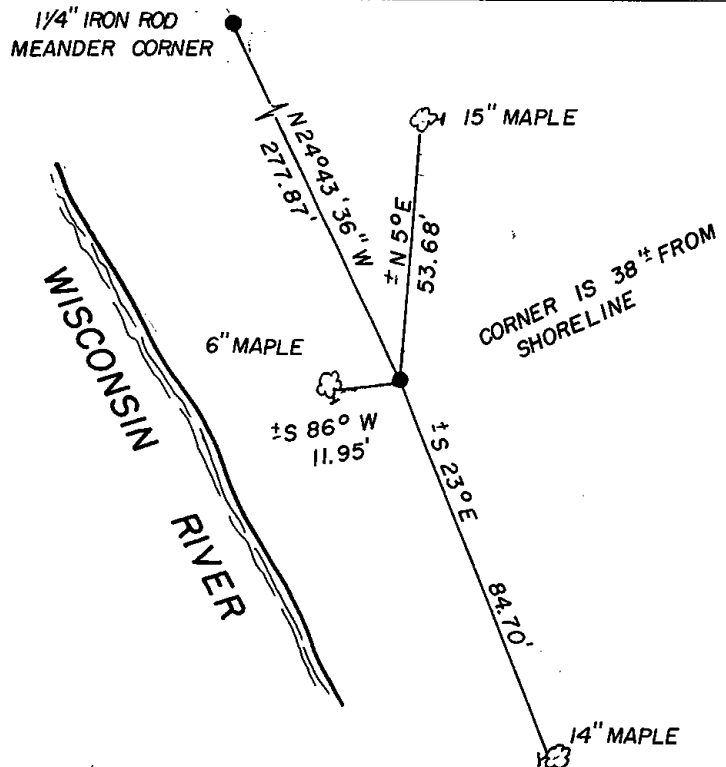
DATA SHOWN HERE ON CERTIFIED CORRECT:

Gregory P. Rhinehart
Registered Land Surveyor

DATE: Nov 4, 1983

TIE SKETCH

Show at least four ties, also fence lines, roads, topo, size and type of witness trees and if off road - best way to arrive at corner.



MAINTENANCE RECORD

Date	Init.	Remarks
11/4/2014	GR	OK

Government Land Corner Certificate

ADAMS County

TYPE OF MONUMENT: 1 1/2" X 30" Rebar

STATE PLANE COORDINATES: N _____
E _____

ELEVATION — M.S.L. DATUM: _____

THETA ANGLE: _____

FIELD BOOK: Loose Leaf PAGE _____

DRAWN BY: S. Sorensen

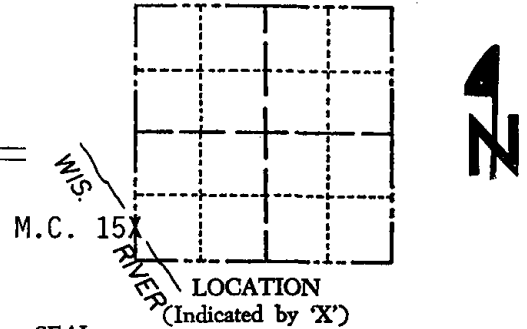
M.C. 1 1/2

CORNER NO. 71 B

SECTION 13

TOWN 15

RANGE 5

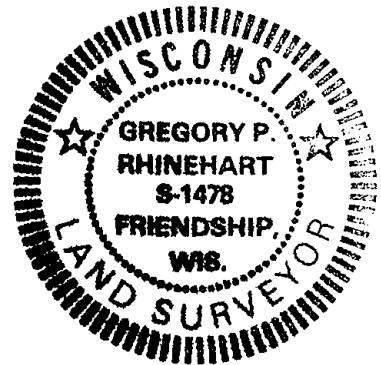


BASIS FOR MONUMENT LOCATION

Show info such as: History of corner, with reference to Vol. and pg., dates, surveyor; exact description of monument replaced; if location computed, by taped or EDM traverse; landowner remarks, etc. (Use reverse side if necessary)

Set monument at the record original distance south of the West Quarter Corner of Section 13 and on an extension of the west line of the Northwest Quarter of Section 13. Diligent search in this area yielded no evidence of either the original monument, bearing trees or monuments placed by Zenus Wise, Adams County Surveyor 1870-1876, in his survey of August 1876.

No fences or other indication of possession were found.



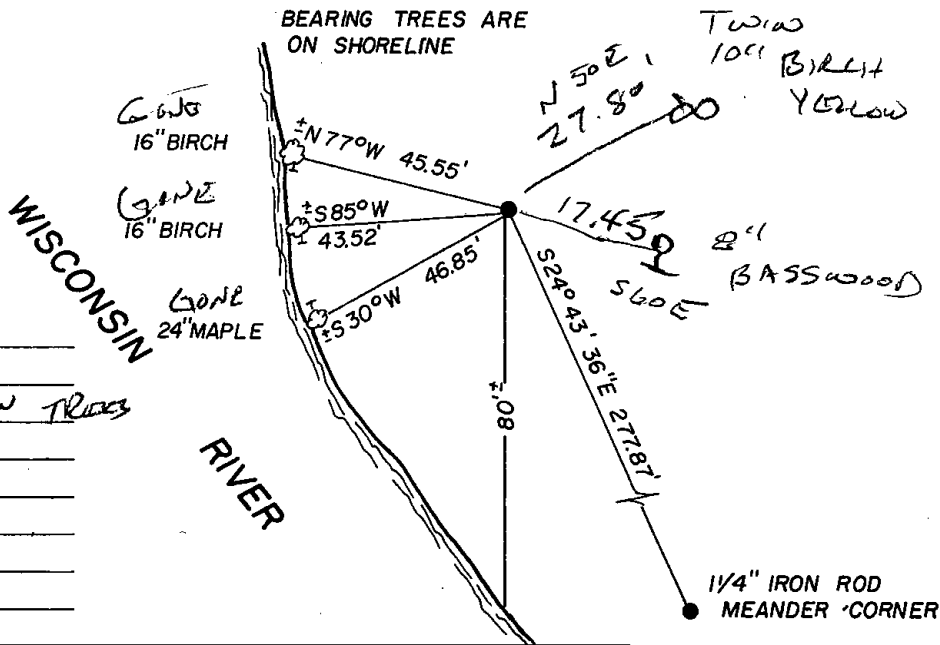
DATA SHOWN HERE ON CERTIFIED CORRECT:

Gregory P. Rhinehart
Registered Land Surveyor

DATE: Nov 4, 1983

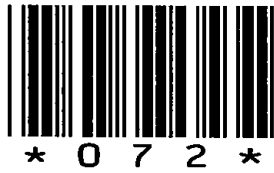
TIE SKETCH

Show at least four ties, also fence lines, roads, topo, size and type of witness trees' and if off road - best way to arrive at corner.



MAINTENANCE RECORD

Date	Init.	Remarks
1/17/2001	GS	2 NEW TREES



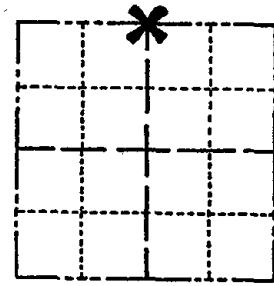
072

ADAMS COUNTY

Survey Monument Record

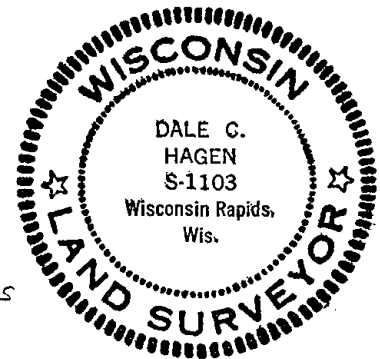
TYPE OF MONUMENT: Standard Harrison
STATE PLANE COORDINATES: N _____
E _____
ELEVATION — M.S.L. DATUM: _____
THETA ANGLE: _____
FIELD BOOK: _____ PAGE _____

CORNER NO. 835⁽¹²⁾
SECTION 24
TOWN 15
RANGE 6



LOCATION
(Indicated by 'X')

SEAL:



BASIS FOR MONUMENT LOCATION

(Use reverse side if necessary)

Show info such as: History of corner, with reference to Vol. and pg. dates, surveyor; exact description of monument replaced; if location computed, by taped or EDM traverse; landowner remarks, etc.

Ran EDM/transit traverse around Sections 19 and 30 of Town 15 North, Range 6 East, and to adjacent government corners.

Found 1/2" Iron bar with the search area. Bar was used by Mid-States Assoc. in a survey in 13-15-5.

Accepted same as corner and remonumented,

Corner & ties in good condition. 3-31-76 GR-SS
ALL OK KZ-56 1-10-91
ALL OK 2/20/96, JG-ER
OK 2-2-01, JG-SS
ALL OK, 5-12-06-JG
" 01-14-11 SS

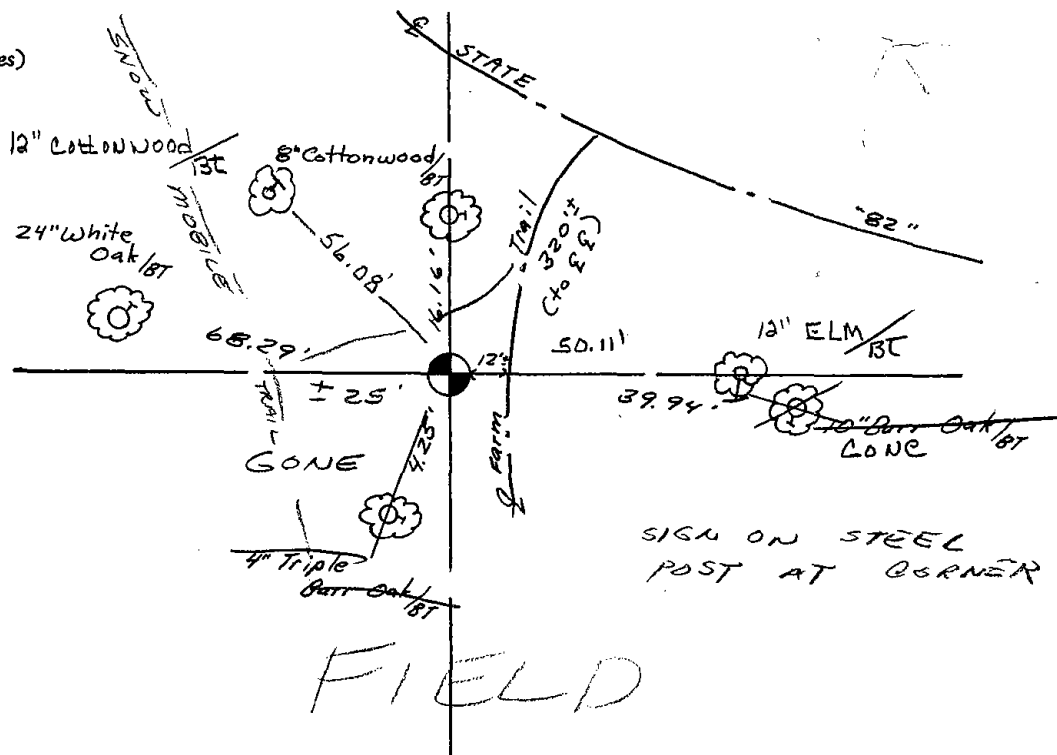
CERTIFIED CORRECT:

Dale C. Hagen

Registered Land Surveyor
DATE: December 02, 1975

TIE SKETCH

(Show at least four ties)





092

ADAMS COUNTY

Survey Monument Record

TYPE OF MONUMENT: Std Harrison "Witness"

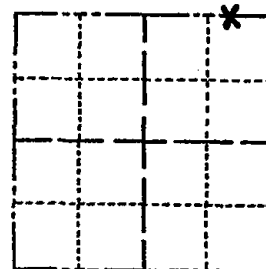
STATE PLANE COORDINATES: N _____
E _____

ELEVATION — M.S.L. DATUM: _____

THETA ANGLE: _____

FIELD BOOK: _____ PAGE _____

CORNER NO. 92
SECTION 25
TOWN 15 N
RANGE 5 E



LOCATION
(Indicated by 'X')

SEAL:



BASIS FOR MONUMENT LOCATION

(Use reverse side if necessary)

Show info such as: History of corner, with reference to Vol. and pg, dates, surveyor; exact description of monument replaced; if location computed, by taped or EDM traverse; landowner remarks, etc.

No history
EDM traverse (see section summary)

CERTIFIED CORRECT:

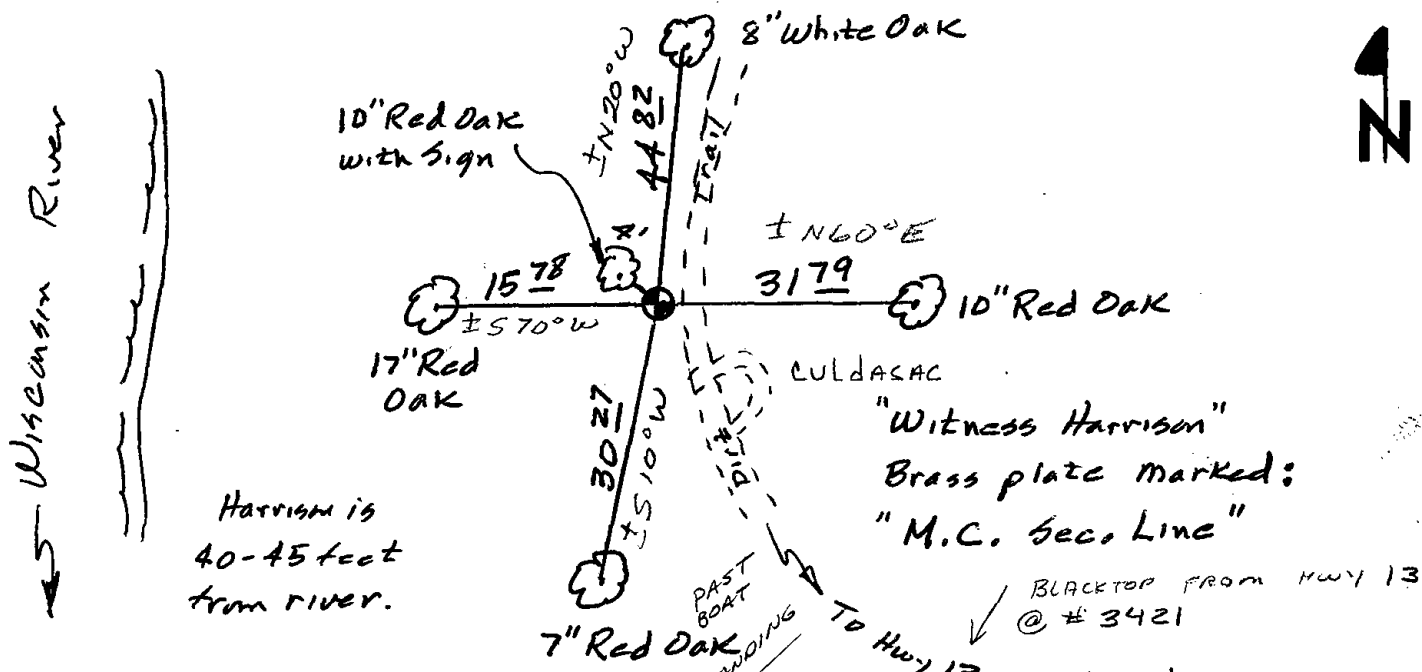
Kenneth G. Carlson
Registered Land Surveyor

DATE: Nov 27, 1978

TIE SKETCH

(Show at least four ties)

All trees blazed and marked "BT"



Harrison is 40-45 feet from river.

"Witness Harrison"
Brass plate marked:
"M.C. Sec. Line"

BLACKTOP FROM Hwy 13 @ # 3421

MAINTENANCE RECORD

Date	Init.	Remarks
9-8-81	SK-NJ	TIES OK
2-6-86	GR-SS	" "
11-21-91	JG-SS	OK
2/20/96	JB-CR	OK
2-2-01	JG-SS	OK, TIES REPLAZED



112

ADAMS COUNTY

Survey Monument Record

TYPE OF MONUMENT: Std Harrison "Witness"

STATE PLANE COORDINATES: N _____

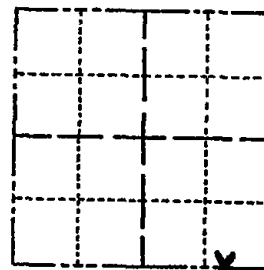
E _____

ELEVATION — M.S.L. DATUM: _____

THETA ANGLE: _____

FIELD BOOK: _____ PAGE _____

CORNER NO. 112
SECTION 25
TOWN 15 N
RANGE 5 E



LOCATION
(Indicated by 'X')

SEAL:



BASIS FOR MONUMENT LOCATION

(Use reverse side if necessary)

Show info such as: History of corner, with reference to Vol. and pg, dates, surveyor; exact description of monument replaced; if location computed, by taped or EDM traverse; landowner remarks, etc.

No history

EDM traverse (see section summary)
3 NEW TIES 2-20-96 MON. OK

WITNESSES & MONUMENTS GONE

7-6-86 G.R. - 55

SEE DELLS CLUB CANOE PLATS

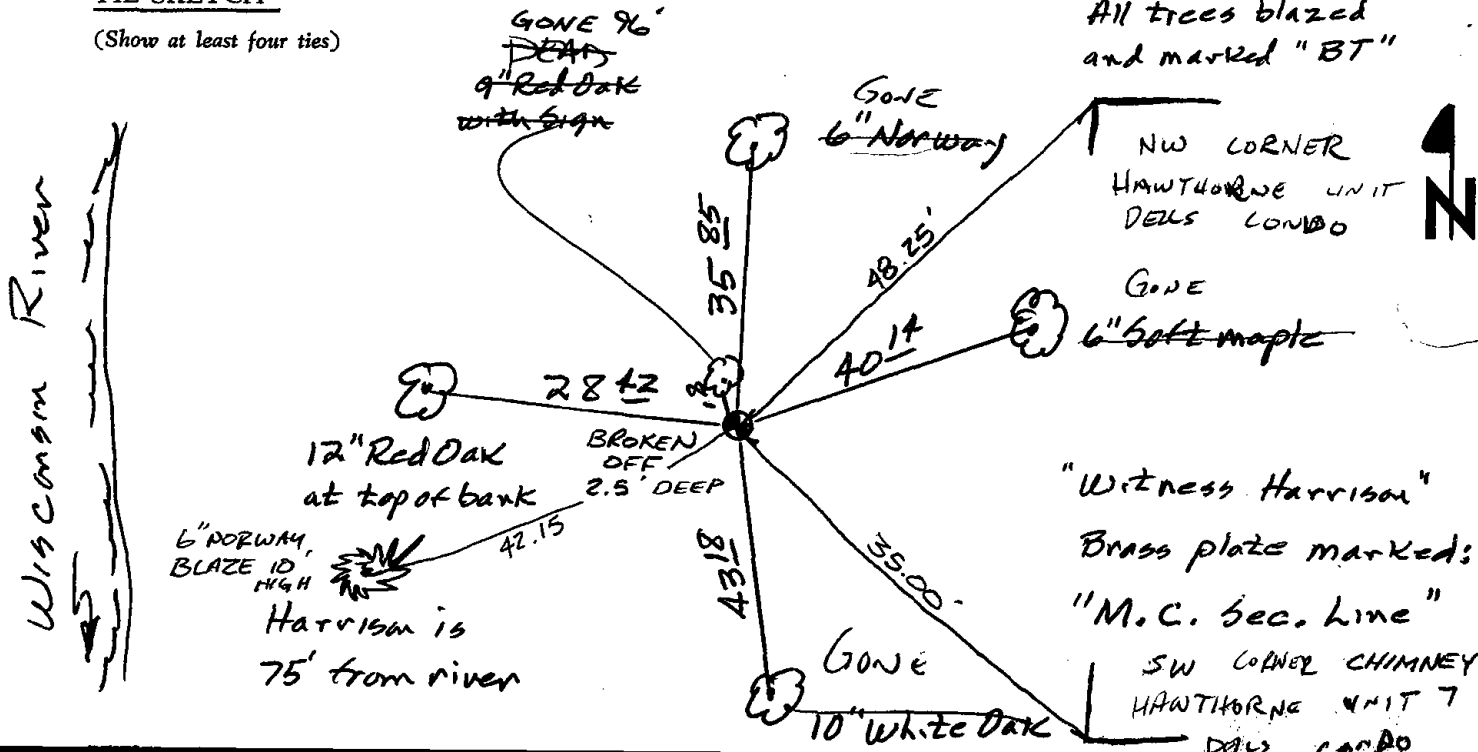
CERTIFIED CORRECT:

Kenneth G. Carlson
Registered Land Surveyor

DATE: Nov 27, 1978

TIE SKETCH

(Show at least four ties)



All trees blazed and marked "BT"

"Witness Harrison"
Brass plate marked:

"M.C. Sec. Line"