

## PUBLIC LAND SURVEY MONUMENT RECORD

TYPE OF MONUMENT: HARRISON  
 ADAMS COUNTY COORDINATES, NAD 83 (2007)

N. 161985.295

E. 520579.861

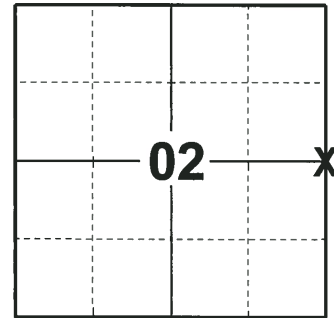
ELEVATION-      DATUM     

FIELD WORK DATE: 07/18/2018

### BASIS FOR MONUMENT LOCATION

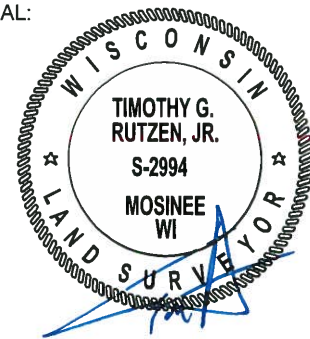
1980 - PLS 584 CALCULATED THIS CORNER PROPORTIONAL BETWEEN THE TWO SECTION CORNERS AND ON LINE BECAUSE IT FIT VERY GOOD TO FENCES AND WOOD LINES. (TONY DUG IN THIS AREA AND FOUND NOTHING OR ANY EVIDENCE OF A CORNER.) SET A HARRISON MONUMENT AND TIED OUT.

2018 - PLS 2994 FOUND A HARRISON MONUMENT 2" BELOW THE GROUND SURFACE, 1 WITNESS AND 1 PROPERTY IRON. THE MONUMENT AGREES WITH THE EXISTING WITNESS. IN REVIEW OF THIS CORNER LOCATION, IT APPEARS TO BE ON LINE BETWEEN THE TWO SECTION CORNERS BUT IS 46'± SOUTH OF BEING EQUIDISTANT BETWEEN THE NE & SE CORNERS. ACCEPTED THE HARRISON MONUMENT AS THE BEST EVIDENCE OF THE CORNER LOCATION. SET 3 NEW TIES AND MEASURED TO THE TIES, WITNESS AND PROPERTY IRON.



**LOCATION**  
 (INDICATE CORNER BY "X")

SEAL:



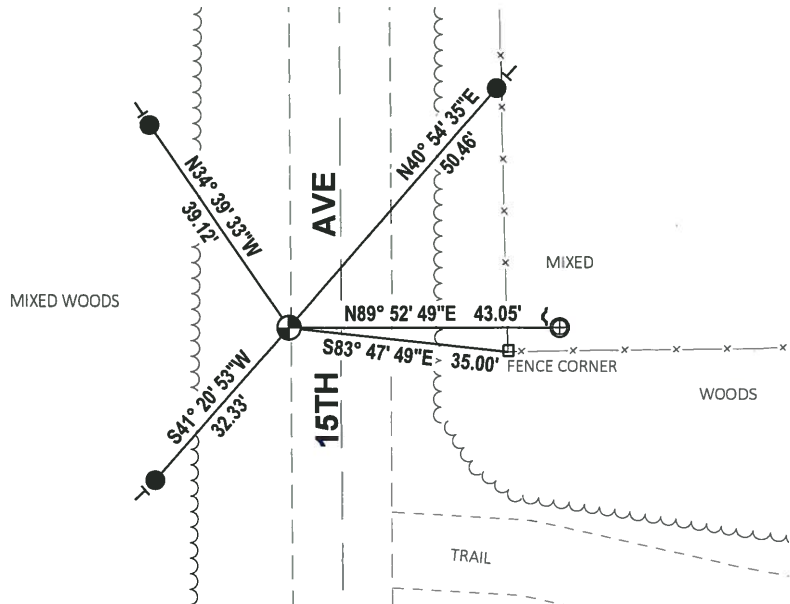
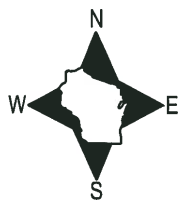
DATA SHOWN HERE ON THIS TIE SHEET IS CORRECT AND COMPLETE TO THE BEST OF MY KNOWLEDGE AND BELIEF.

PROFESSIONAL LAND SURVEYOR

DATE 8-10-18

### - TIE SKETCH

NOTE: THE CORNER FALLS 8.5'± WEST OF THE CENTERLINE OF 15TH AVE.



- SET 3/4" x 18" IRON REBAR, 1.50#/FT
- ⊕ FOUND 1" O.D. IRON PIPE
- ⊙ FOUND HARRISON MONUMENT
- ↘ STEEL FENCE POST
- ┌ VINYL "T" POST

# Government Land Corner Certificate

ADAMS County

TYPE OF MONUMENT: HARRISON

STATE PLANE COORDINATES: N \_\_\_\_\_  
E \_\_\_\_\_

ELEVATION — M.S.L. DATUM: \_\_\_\_\_

THETA ANGLE: \_\_\_\_\_

FIELD BOOK: 54 PAGE 66

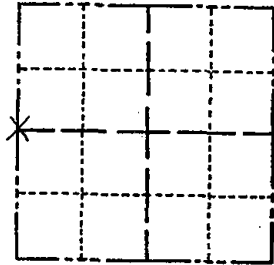
DRAWN BY: K. VICKER

CORNER NO. 19

SECTION 1

TOWN 15

RANGE 5



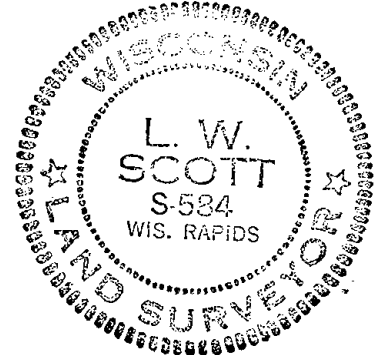
LOCATION  
(Indicated by 'X')

## BASIS FOR MONUMENT LOCATION

Show info such as: History of corner, with reference to Vol. and pg., dates, surveyor; exact description of monument replaced; if location computed, by taped or EDM traverse; landowner remarks, etc. (Use reverse side if necessary)

Set this West quarter corner proportional between the two section corners and on line because it fit very good to local conditions like fences and wood lines. (Tony dug in this area and found nothing or any evidence of a corner.) Ties to nail and discs.

SEAL:



DATA SHOWN HERE ON  
CERTIFIED CORRECT:

*L. W. Scott*  
Registered Land Surveyor

DATE: 10/31/80

## TIE SKETCH

Show at least four ties, also fence lines, roads, topo, size and type of witness trees and if off road - best way to arrive at corner.

