

01 SECTION 15 TOWN 05 RANGE

# ADAMS COUNTY

COUNTY CORNER NO: 20  
ROMPORTOL ID: 41505012000

## PUBLIC LAND SURVEY MONUMENT RECORD

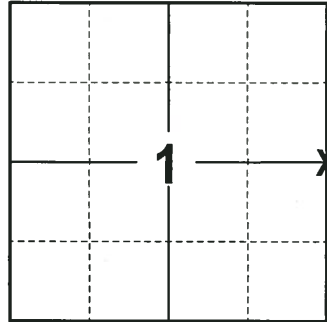
TYPE OF MONUMENT: SURVEY NAIL  
ADAMS COUNTY COORDINATES, NAD 83 (2007)

N. 161973.945

E. 525862.073

ELEVATION-      -      -      DATUM      -      -     

FIELD WORK DATE: 10/09/2017



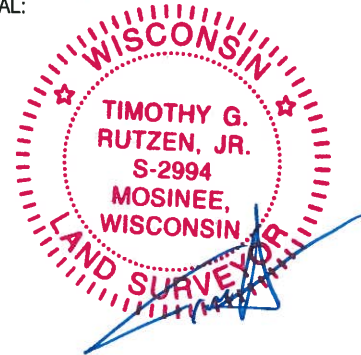
### BASIS FOR MONUMENT LOCATION

2013 - PLS 1452 SET LOCATION FROM OCT 31, 1980 TIE SHEET AND SECTION SUMMARY DISTANCE TO THE SOUTH. SET A BERNTSEN SURVEY NAIL AT THE CORNER LOCATION AND RE-TIED.

2017 - PLS 2994 FOUND A SURVEY NAIL IN THE ROAD SURFACE, 1 PROPERTY IRON AND 4 TIES. REMOVED THE SURVEY NAIL AND SEARCHED FOR A MONUMENT BELOW IT, FOUND NO EVIDENCE OF ANY MONUMENT. RE-SET THE SURVEY NAIL IN THE LOCATION THAT IT WAS FOUND. THE MONUMENT AGREES WITH THE TIES. ACCEPTED THE SURVEY NAIL AS THE CORNER LOCATION AND RE-MEASURED TO THE EXISTING PROPERTY IRON AND TIES.

**LOCATION**  
(INDICATE CORNER BY "X")

SEAL:



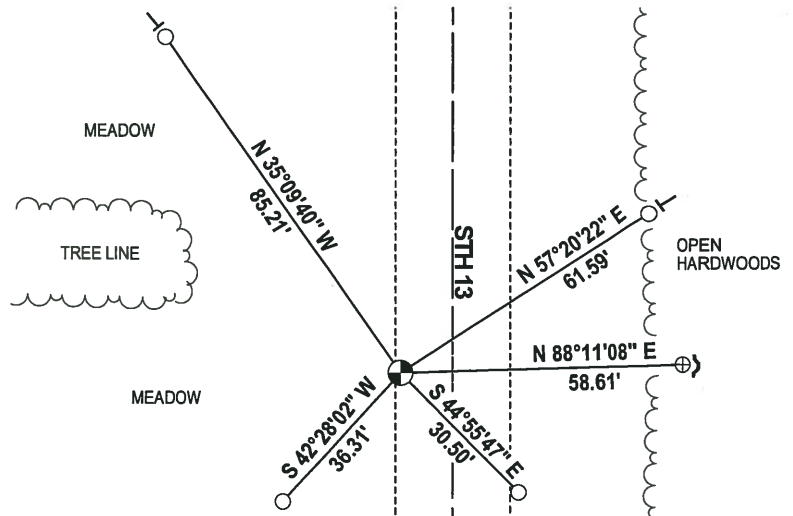
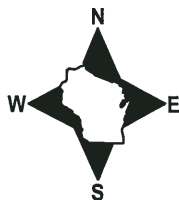
DATA SHOWN HERE ON THIS TIE SHEET IS CORRECT AND COMPLETE TO THE BEST OF MY KNOWLEDGE AND BELIEF.

PROFESSIONAL LAND SURVEYOR

DATE 12-4-17

### - TIE SKETCH -

NOTE: THE CORNER FALLS 11'± WEST OF THE CENTERLINE OF STH 13.



- WISDOT ALUMINUM BERNTSEN MONUMENT FOUND
- ⊕ 3/4" IRON ROD FOUND
- ⊗ SURVEY NAIL FOUND
- ↙ STEEL FENCE POST
- └ VINYL "T" POST

