

PUBLIC LAND SURVEY MONUMENT RECORD

TYPE OF MONUMENT: HARRISON (BROKEN-TOP)
 ADAMS COUNTY COORDINATES, NAD 83 (2007)

N. 159341.717

E. 515283.357

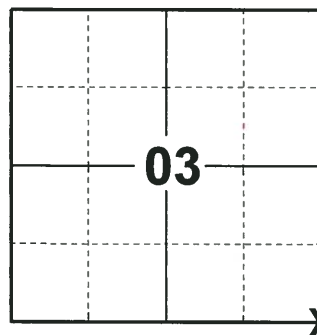
ELEVATION- - - - DATUM - - - -

FIELD WORK DATE: 07/18/2018

BASIS FOR MONUMENT LOCATION

1973 - PLS 878 EXCAVATED WITH A BACKHOE AND FOUND A 3"x6"x16" STONE. LOWERED THE STONE, SET A HARRISON ON TOP AND TIED OUT THE CORNER.

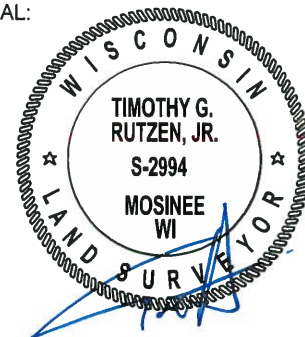
2018 - PLS 2994 FOUND A HARRISON MONUMENT WITH A BROKEN-TOP FLUSH WITH THE ROAD SURFACE, 1 TIE AND 1 PROPERTY IRON. THE MONUMENT AGREES WITH THE EXISTING TIE. ACCEPTED THE HARRISON MONUMENT WITH A BROKEN-TOP AS THE CORNER LOCATION. SET 2 NEW TIES AND MEASURED TO THE TIES AND PROPERTY IRON.



LOCATION

(INDICATE CORNER BY "X")

SEAL:



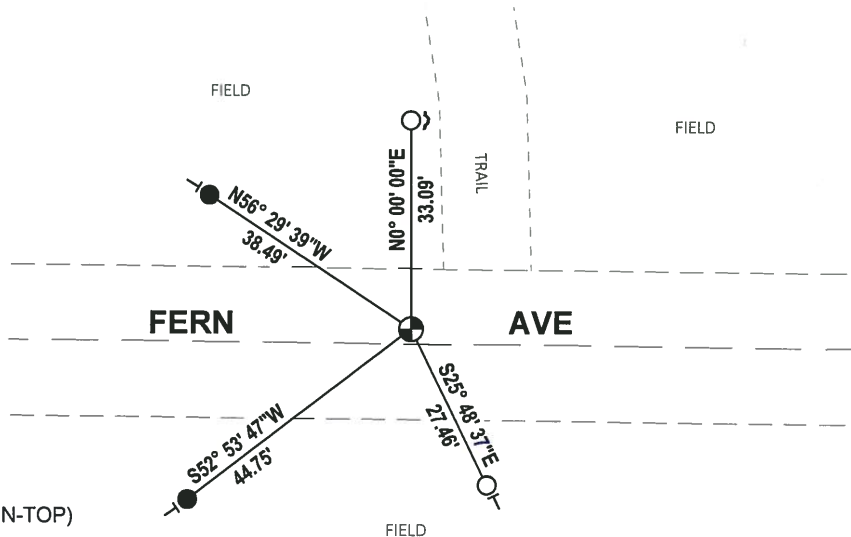
DATA SHOWN HERE ON THIS TIE SHEET IS CORRECT AND COMPLETE TO THE BEST OF MY KNOWLEDGE AND BELIEF.

PROFESSIONAL LAND SURVEYOR

DATE 8-10-18

- TIE SKETCH

NOTE: THE CORNER FALLS 2± NORTH OF THE CENTERLINE OF FERN AVE.



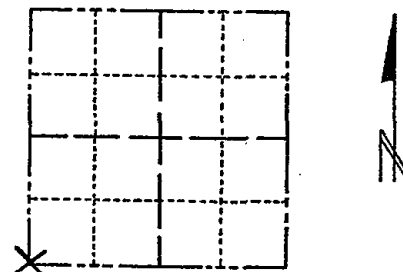
- SET 3/4" x 18" IRON REBAR, 1.50#/FT
- FOUND 3/4" IRON ROD
- ⊕ FOUND HARRISON MONUMENT (BROKEN-TOP)
- ↗ STEEL FENCE POST
- ┌ VINYL "T" POST

ADAMS COUNTY

Survey Monument Record

TYPE OF MONUMENT: 30" HARRISON
STATE PLANE COORDINATES: N
E
ELEVATION - M.S.L. DATUM:
THETA ANGLE:
FIELD BOOK: PAGE

CORNER NO. 340
SECTION 2
TOWN 15
RANGE 5



LOCATION (Indicated by 'X')

BASIS FOR MONUMENT LOCATION

(Use reverse side if necessary)

Show info such as: History of corner, with reference to Vol. and pg, dates, surveyor; exact description of monument replaced; if location computed, by taped or EDM traverse; landowner remarks, etc.

SEAL:

Excavated with backhoe. Found 3" x 6" x 16" stone. Lowered stone and set Harrison on top.

Corner 8 ties in good condition 2-31-76 GR-SS
" " " " " " 1-28-86 GR-SS
DK 1-15-96 JG-SS
OK 1-24-01 - JG
1-GONE, 2-NEW TIES, 4-24-06 - JG
OK 1-07-11 SS



CERTIFIED CORRECT:

Signature of Anthony B. Kiedrowski
Registered Land Surveyor
Aug. 73
DATE:

TIE SKETCH

(Show at least four ties)

