

PUBLIC LAND SURVEY MONUMENT RECORD

TYPE OF MONUMENT: HARRISON (BROKEN-TOP)
 ADAMS COUNTY COORDINATES, NAD 83 (2007)

N. 159331.778

E. 517937.034

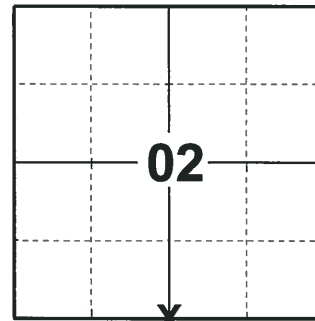
ELEVATION- DATUM

FIELD WORK DATE: 07/18/2018

BASIS FOR MONUMENT LOCATION

1980 - PLS 878 NO RECORD OF RESURVEYS. EXCAVATED WITH A BACKHOE AND FOUND A 2" x 5" x 10" DARK RED SANDSTONE. REPLACED STONE WITH HARRISON MONUMENT AND TIED OUT. (SET STONE FOUND ALONGSIDE EAST SIDE THEREOF.)

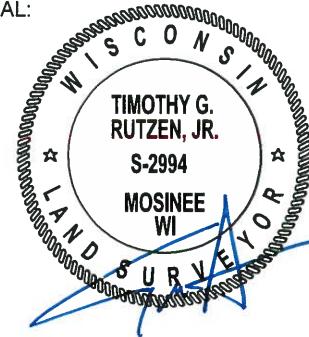
2018 - PLS 2994 FOUND A HARRISON MONUMENT WITH A BROKEN-TOP FLUSH WITH THE ROAD SURFACE AND 1 TIE. THE MONUMENT AGREES WITH THE EXISTING TIE. ACCEPTED THE HARRISON MONUMENT WITH A BROKEN-TOP AS THE CORNER LOCATION. SET 3 NEW TIES AND MEASURED TO THE TIES.



LOCATION

(INDICATE CORNER BY "X")

SEAL:



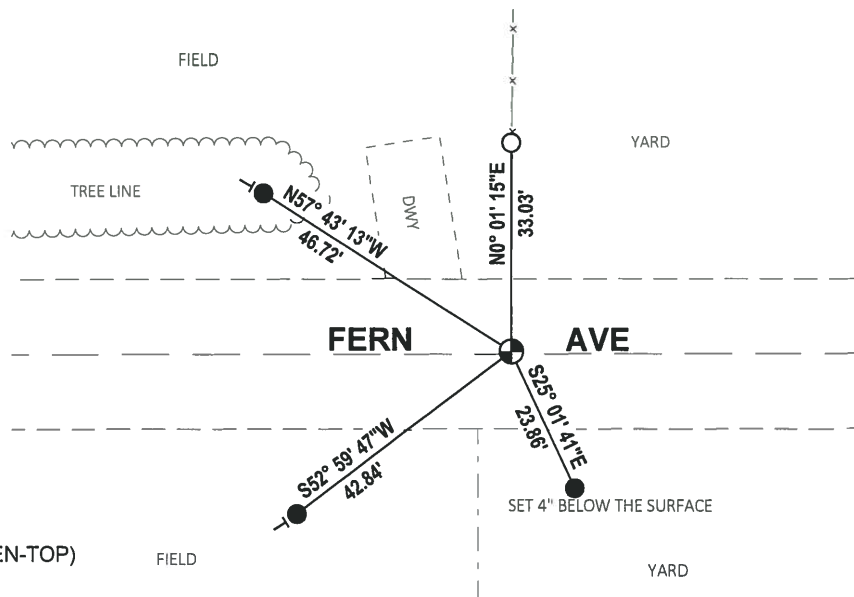
DATA SHOWN HERE ON THIS TIE SHEET IS CORRECT AND COMPLETE TO THE BEST OF MY KNOWLEDGE AND BELIEF.

PROFESSIONAL LAND SURVEYOR

DATE 8-16-18

- TIE SKETCH

NOTE: THE CORNER FALLS 0.5± NORTH OF THE CENTERLINE OF FERN AVE.



- SET 3/4" x 18" IRON REBAR, 1.50#/FT
- FOUND 3/4" IRON ROD
- ⊕ FOUND HARRISON MONUMENT (BROKEN-TOP)
- ⊥ VINYL "T" POST

Government Land Corner Certificate

ADAMS County

TYPE OF MONUMENT: HARRISON

STATE PLANE COORDINATES: N _____
E _____

ELEVATION — M.S.L. DATUM: _____

THETA ANGLE: _____

FIELD BOOK: 54 PAGE 66 a

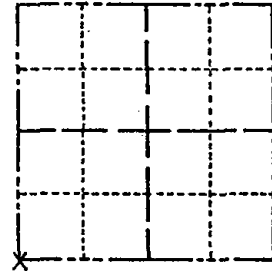
DRAWN BY: K. VICKER

CORNER NO. 31

SECTION 1

TOWN 15

RANGE 5

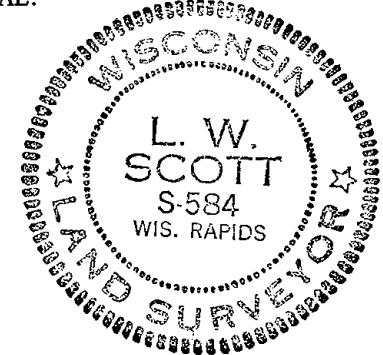


BASIS FOR MONUMENT LOCATION

Show info such as: History of corner, with reference to Vol. and pg., dates, surveyor; exact description of monument replaced; if location computed, by taped or EDM traverse; landowner remarks, etc. (Use reverse side if necessary)

Set Harrison for section corner after finding no evidence of any corner in this area. (Tony dug with back hoe in this area and found nothing.) The Section was set by double proportioning. Ties to nails and discs.

SEAL:



DATA SHOWN HERE ON CERTIFIED CORRECT:

L. W. Scott
Registered Land Surveyor

DATE: 10/31/80

TIE SKETCH

Show at least four ties, also fence lines, roads, topo, size and type of witness trees and if off road - best way to arrive at corner.

