

PUBLIC LAND SURVEY MONUMENT RECORD

TYPE OF MONUMENT: HARRISON
 ADAMS COUNTY COORDINATES, NAD 83 (2007)

N. 156701.824

E. 515274.713

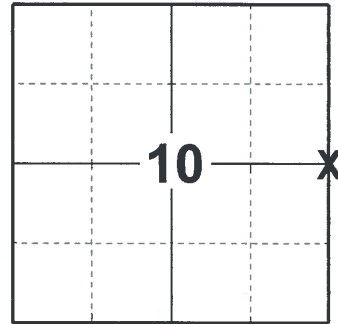
ELEVATION- _____ DATUM _____

FIELD WORK DATE: 07/26/2018

BASIS FOR MONUMENT LOCATION

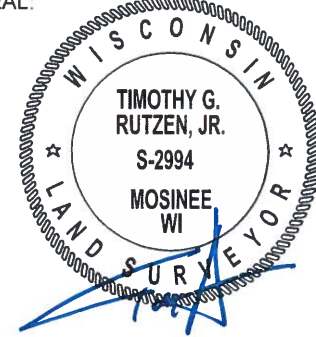
1981 - PLS 1444 A TRAVERSE OF SEVERAL SURROUNDING SECTIONS AND EVALUATION OF THE ORIGINAL NOTES, SUPPORTS THE CORNER LOCATION. THERE WAS NO EVIDENCE OF POSSESSION LINES IN THIS AREA BECAUSE THE LAND ABUTTING THE CORNER IS ALL OWNED BY ONE PERSON AND HAS BEEN OWNED BY ONE PERSON FOR MANY YEARS. SET A HARRISON AT THE CORNER POSITION AND TIED OUT.

2018 - PLS 2994 FOUND A HARRISON MONUMENT 4" ABOVE THE GROUND SURFACE AND 2 WITNESS TREES. THE MONUMENT AGREES WITH THE EXISTING WITNESS TREES. ACCEPTED THE HARRISON MONUMENT AS THE CORNER LOCATION. SET 4 NEW TIES AND MEASURED TO THE TIES AND WITNESS TREES.



LOCATION
 (INDICATE CORNER BY "X")

SEAL:



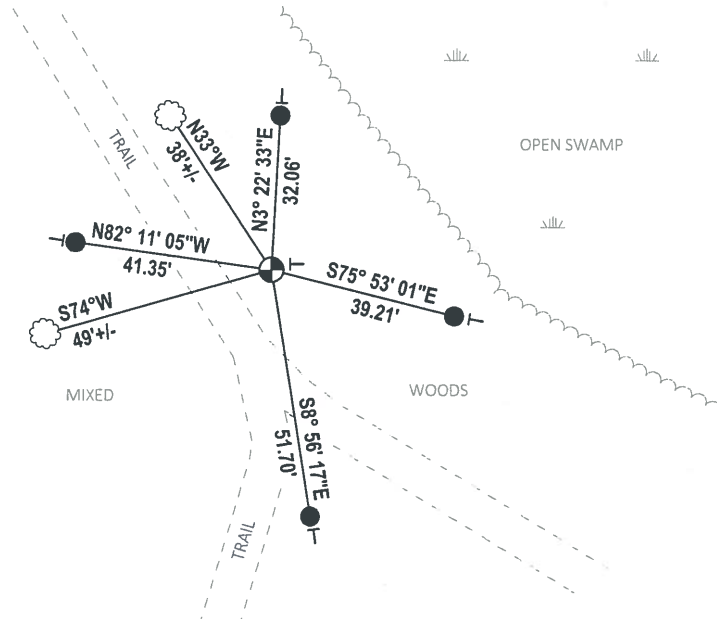
DATA SHOWN HERE ON THIS TIE SHEET IS CORRECT AND COMPLETE TO THE BEST OF MY KNOWLEDGE AND BELIEF.

PROFESSIONAL LAND SURVEYOR

DATE 8-30-18

TIE SKETCH

NOTE: THE CORNER FALLS 13'± EAST OF THE CENTERLINE OF THE TRAIL.

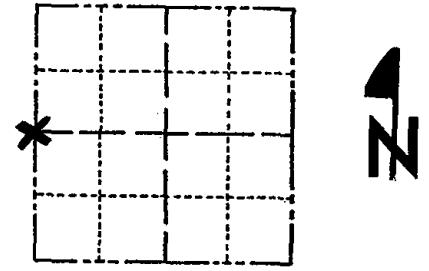


- SET 3/4" x 18" IRON REBAR, 1.50#/FT
- ⊕ FOUND HARRISON MONUMENT
- VINYL "T" POST
- ☼ WITNESS TREE

Government Land Corner Certificate

ADAMS County
 TYPE OF MONUMENT: HARRISON
 STATE PLANE COORDINATES: N _____
 E _____
 ELEVATION — M.S.L. DATUM: _____
 THETA ANGLE: _____
 FIELD BOOK: 76 PAGE 60
 DRAWN BY: LANCE J. HASECK

CORNER NO. 38
 SECTION 11
 TOWN 15
 RANGE 5



LOCATION
(Indicated by 'X')

BASIS FOR MONUMENT LOCATION

Show info such as: History of corner, with reference to Vol. and pg., dates, surveyor; exact description of monument replaced; if location computed, by taped or EDM traverse; landowner remarks, etc. (Use reverse side if necessary)

A traverse of several surrounding sections and evaluation of original notes indicates that this is the most likely place for this corner. There was no evidence of possession lines in this area because the land abutting the corner is all owned by one person and has been owned by one person for many years.

SEAL:



DATA SHOWN HERE ON
CERTIFIED CORRECT:

Lance J. Haseck
Registered Land Surveyor

DATE: 2/4/81

TIE SKETCH

Show at least four ties, also fence lines, roads, topo, size and type of witness trees and if off road - best way to arrive at corner.

FO ALL - MADE NEW BLAZE
 HIGHER THAN OLD - SET NEW
 NAILS IN ALL 2-2-01 SJF

FOUND BARK →
 SCRIBED BT
 STILL VISIBLE & WEST
 2011

MAP.
 ± 12' E. of "RECREATIONAL
 TYPE TRAIL" ± 20' NORTH
 OF FORK IN TRAIL

