

PUBLIC LAND SURVEY MONUMENT RECORD

TYPE OF MONUMENT: HARRISON
 ADAMS COUNTY COORDINATES, NAD 83 (2007)

N. 151425.263

E. 520590.932

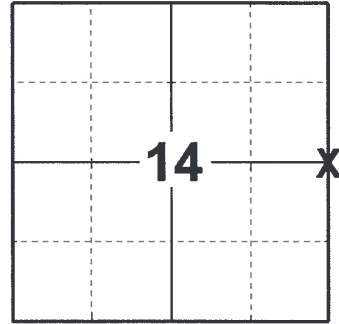
ELEVATION- _____ DATUM _____

FIELD WORK DATE: 07/27/2018

BASIS FOR MONUMENT LOCATION

1982 - PLS 1444 A THEORETICAL LOCATION WAS COMPUTED FOR THE SOUTHWEST CORNER OF SEC. 13 BY EXTENDING AND DOUBLING THE LINE FROM THE SOUTHEAST CORNER OF SECTION 13 TO THE SOUTH QUARTER CORNER. THE WEST QUARTER CORNER WAS CALCULATED EQUIDISTANT AND ON LINE BETWEEN THE NORTHWEST CORNER OF SECTION 13 AND THE COMPUTED POSITION OF THE SOUTHWEST CORNER OF SECTION 13. THIS LOCATION MATCHED THE DISTANCE GIVEN IN THE ORIGINAL NOTES FROM THE CORNER, NORTHWARD OF THE BLUFF LINE. SET A HARRISON MONUMENT AT THE CALCULATED CORNER LOCATION AND TIED OUT.

2018 - PLS 2994 FOUND A HARRISON MONUMENT 4" ABOVE THE GROUND SURFACE AND 1 TIE. THE MONUMENT AGREES WITH THE EXISTING TIE. ACCEPTED THE HARRISON MONUMENT AS THE CORNER LOCATION. SET 4 NEW TIES AND MEASURED TO THE TIES.



LOCATION
 (INDICATE CORNER BY "X")

SEAL:

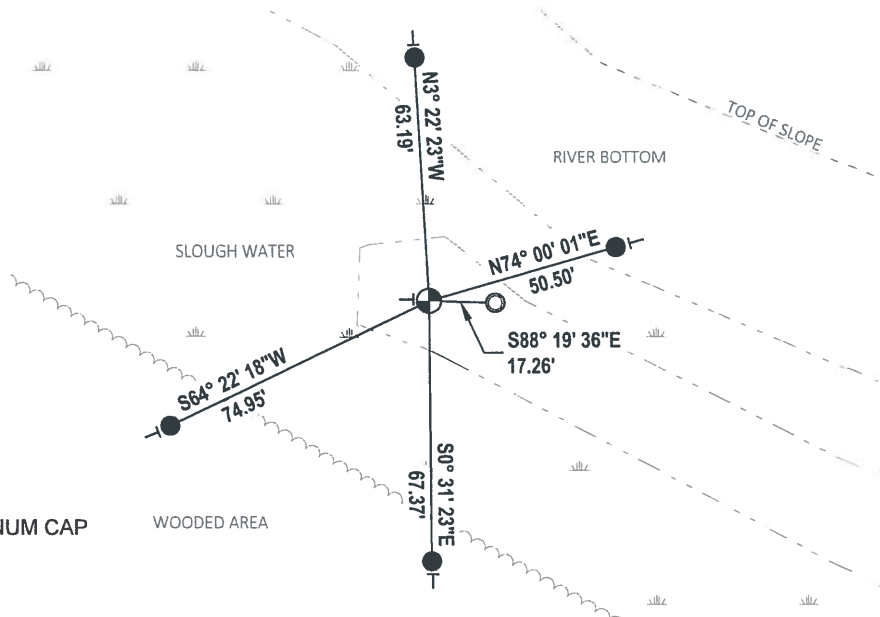
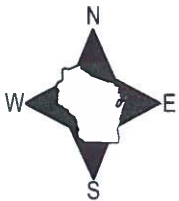


DATA SHOWN HERE ON THIS TIE SHEET IS CORRECT AND COMPLETE TO THE BEST OF MY KNOWLEDGE AND BELIEF.

PROFESSIONAL LAND SURVEYOR

DATE 8-30-18

TIE SKETCH



- SET 3/4" x 18" IRON REBAR, 1.50#/FT
- FOUND 1-1/4" O.D. IRON PIPE W/ALUMINUM CAP
- ⊕ FOUND HARRISON MONUMENT
- VINYL "T" POST

Government Land Corner Certificate

ADAMS County

TYPE OF MONUMENT: HARRISON

STATE PLANE COORDINATES: N 43° 46' 55.2"
 HAND HELD GPS W 89° 51' 27.6"

ELEVATION — M.S.L. DATUM: _____

THETA ANGLE: _____

FIELD BOOK: 92 PAGE 81

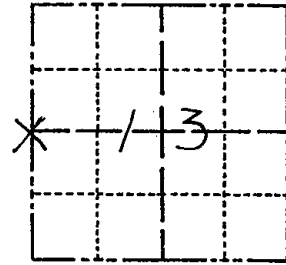
DRAWN BY: S.J.H.

CORNER NO. 59

SECTION 13

TOWN 15

RANGE 5



LOCATION
(Indicated by 'X')

SEAL:



DATA SHOWN HERE ON
CERTIFIED CORRECT:

Lance J. Habeck
Registered Land Surveyor

DATE: 6/1/82

A theoretical location was computed for the southwest corner of Sec. 13 by extending and doubling the line from the southeast corner of Sec. 13 to the south quarter corner. The west quarter corner was set equidistant and on line between the northwest corner of Sec. 13 and the computed southwest corner of Sec. 13. This location matches the distance given in the original notes from the corner, northward to the bluff line.

TIE SKETCH

Show at least four ties, also fence lines, roads, topo, size and type of witness trees' and if off road - best way to arrive at corner.

