

PUBLIC LAND SURVEY MONUMENT RECORD

TYPE OF MONUMENT: 1-1/4" IRON ROD (MEANDER CORNER)
 ADAMS COUNTY COORDINATES, NAD 83 (2007)

N. 149016.557

E. 520604.322

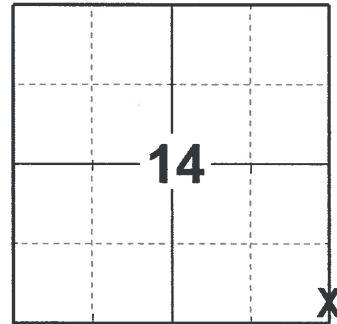
ELEVATION- _____ DATUM _____

FIELD WORK DATE: 07/27/2018

BASIS FOR MONUMENT LOCATION

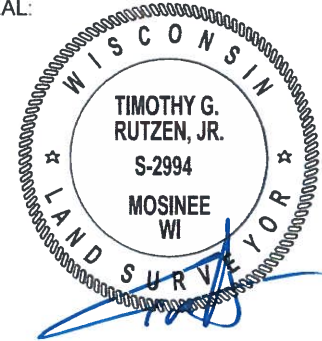
1983 - PLS 1478 CALCULATED THE CORNER AT THE RECORD ORIGINAL DISTANCE SOUTH OF THE WEST QUARTER CORNER OF SECTION 13 AND ON AN EXTENSION OF THE WEST LINE OF THE NORTHWEST QUARTER OF SECTION 13. A DILIGENT SEARCH IN THIS AREA YIELDED NO EVIDENCE OF EITHER THE ORIGINAL MONUMENT, BEARING TREES OR THE MONUMENT PLACED BY ZENUS WISE, ADAMS COUNTY SURVEYOR 1870-1876, IN HIS SURVEY OF AUGUST 1876. NO FENCES OR OTHER INDICATION OF POSSESSION WERE FOUND. SET A 1-1/4"X30" REBAR AT THE CALCULATED CORNER LOCATION AND TIED OUT.

2018 - PLS 2994 FOUND A 1-1/4" IRON ROD 4" ABOVE THE GROUND SURFACE AND 2 WITNESS TREES. THE MONUMENT AGREES WITH THE EXISTING WITNESS TREES. ACCEPTED THE 1-1/4" IRON ROD AS THE MEANDER CORNER LOCATION. SET 4 NEW TIES AND MEASURED TO THE TIES AND WITNESS TREES.



LOCATION
(INDICATE CORNER BY "X")

SEAL:



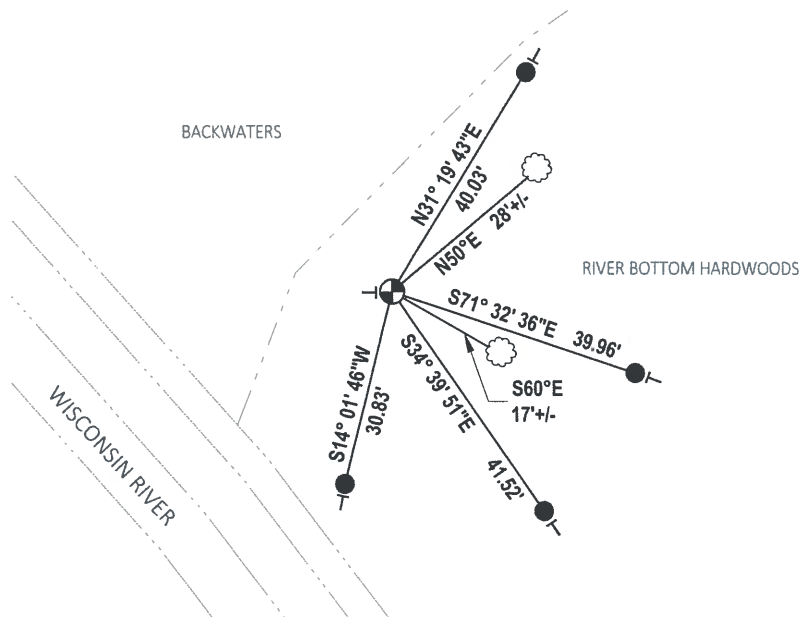
DATA SHOWN HERE ON THIS TIE SHEET IS CORRECT AND COMPLETE TO THE BEST OF MY KNOWLEDGE AND BELIEF.

PROFESSIONAL LAND SURVEYOR

DATE 8-30-18

TIE SKETCH

NOTE: THE CORNER FALLS 32'± NORTHEAST OF THE EDGE OF THE WISCONSIN RIVER.



- SET 3/4" x 18" IRON REBAR, 1.50#/FT
- ⊕ FOUND 1-1/4" IRON ROD
- VINYL "T" POST
- ☁ WITNESS TREE

Government Land Corner Certificate

ADAMS County

M.C. 15

CORNER NO. 71 B
 SECTION 13
 TOWN 15
 RANGE 5

TYPE OF MONUMENT: 1 1/2" X 30" Rebar

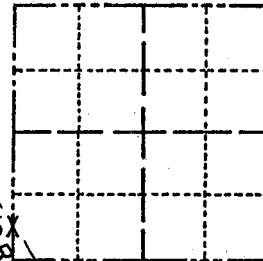
STATE PLANE COORDINATES: N _____
 E _____

ELEVATION — M.S.L. DATUM: _____

THETA ANGLE: _____

FIELD BOOK: Loose Leaf PAGE _____

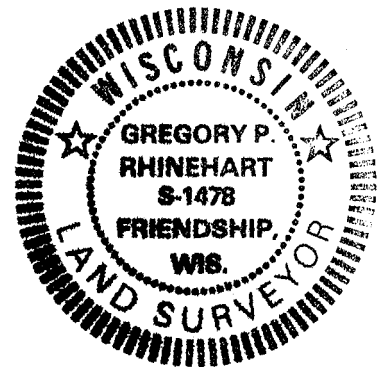
DRAWN BY: S. Sorensen



M.C. 15

LOCATION
(Indicated by 'X')

SEAL:



BASIS FOR MONUMENT LOCATION

Show info such as: History of corner, with reference to Vol. and pg., dates, surveyor; exact description of monument replaced; if location computed, by taped or EDM traverse; landowner remarks, etc. (Use reverse side if necessary)

Set monument at the record original distance south of the West Quarter Corner of Section 13 and on an extension of the west line of the Northwest Quarter of Section 13. Diligent search in this area yielded no evidence of either the original monument, bearing trees or monuments placed by Zenus Wise, Adams County Surveyor 1870-1876, in his survey of August 1876.

No fences or other indication of possession were found.

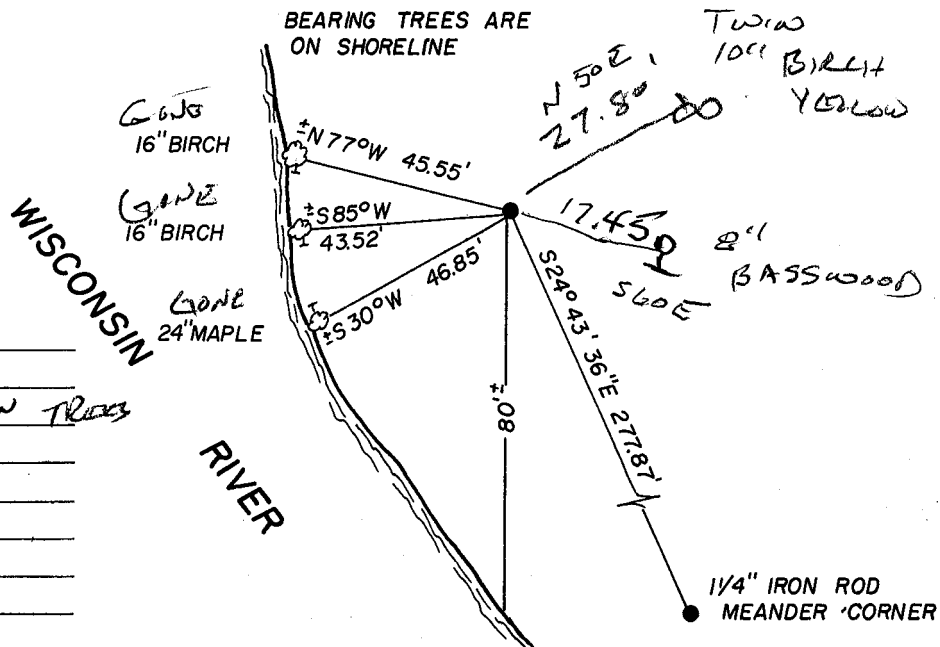
DATA SHOWN HERE ON
CERTIFIED CORRECT:

Gregory P. Rhinehart
Registered Land Surveyor

DATE: Nov 4, 1983

TIE SKETCH

Show at least four ties, also fence lines, roads, topo, size and type of witness trees and if off road - best way to arrive at corner.



MAINTENANCE RECORD

Date	Init.	Remarks
7/19/2001	GL	2 NEW TREES