

ADAMS COUNTY

Survey Monument Record

TYPE OF MONUMENT: Std Harrison "Witness"

STATE PLANE COORDINATES: N _____

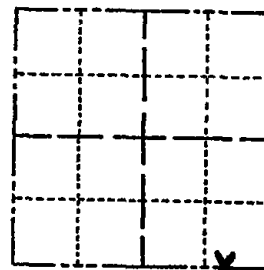
E _____

ELEVATION — M.S.L. DATUM: _____

THETA ANGLE: _____

FIELD BOOK: _____ PAGE _____

CORNER NO. 112
SECTION 25
TOWN 15 N
RANGE 5 E



LOCATION
(Indicated by 'X')



BASIS FOR MONUMENT LOCATION

(Use reverse side if necessary)

Show info such as: History of corner, with reference to Vol. and pg, dates, surveyor; exact description of monument replaced; if location computed, by taped or EDM traverse; landowner remarks, etc.

No history

EDM traverse (see section summary)
3 NEW TIES 2-20-96 MON. OK



SEAL:

WITNESSES & MONUMENTS GONE

7-6-86 G.R. - 55

SEE DELLS CLUB CANOE PLATS

CERTIFIED CORRECT:

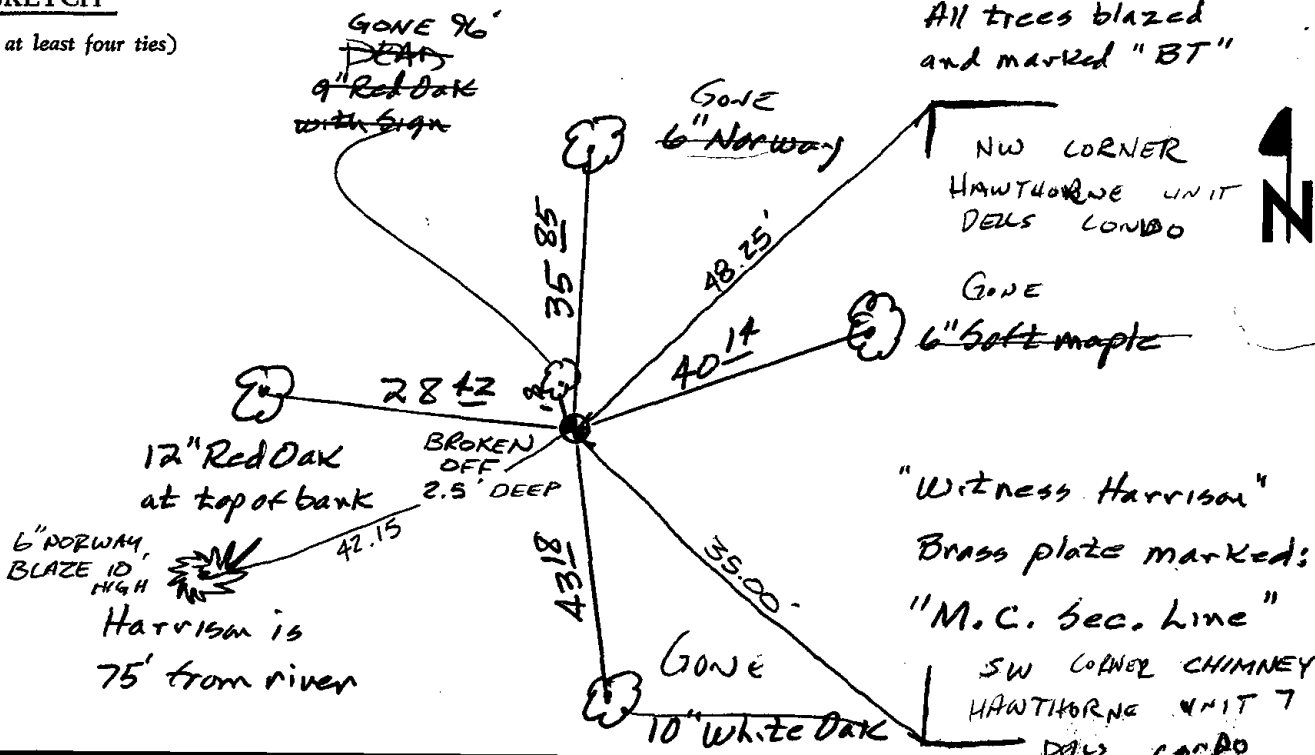
Kenneth G. Carlson
Registered Land Surveyor

DATE: Nov 27, 1978

TIE SKETCH

(Show at least four ties)

Wisconsin River



All trees blazed and marked "BT"

"Witness Harrison"
Brass plate marked:

"M.C. Sec. Line"