

PUBLIC LAND SURVEY MONUMENT RECORD

TYPE OF MONUMENT: HARRISON
 ADAMS COUNTY COORDINATES, NAD 83 (2007)

N. 161984.740

E. 531325.884

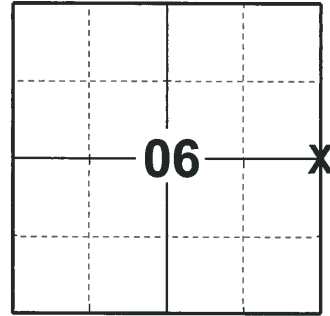
ELEVATION- - - - DATUM - - - -

FIELD WORK DATE: 06/18/2018

BASIS FOR MONUMENT LOCATION

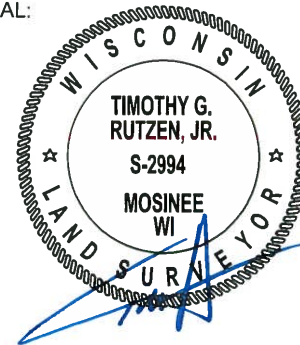
1974 - PLS 878 EXCAVATED WITH A BACKHOE AND FOUND A 1" IRON PIPE. REPLACED IT WITH A HARRISON MONUMENT AND TIED OUT.

2018 - PLS 2994 FOUND A HARRISON MONUMENT 6" BELOW THE ROAD SURFACE AND 2 TIES. THE MONUMENT AGREES WITH THE EXISTING TIES. ACCEPTED THE HARRISON MONUMENT AS THE CORNER LOCATION. SET 2 NEW TIES AND MEASURED TO THE TIES.



LOCATION
 (INDICATE CORNER BY "X")

SEAL:



DATA SHOWN HERE ON THIS TIE SHEET IS CORRECT AND COMPLETE TO THE BEST OF MY KNOWLEDGE AND BELIEF.

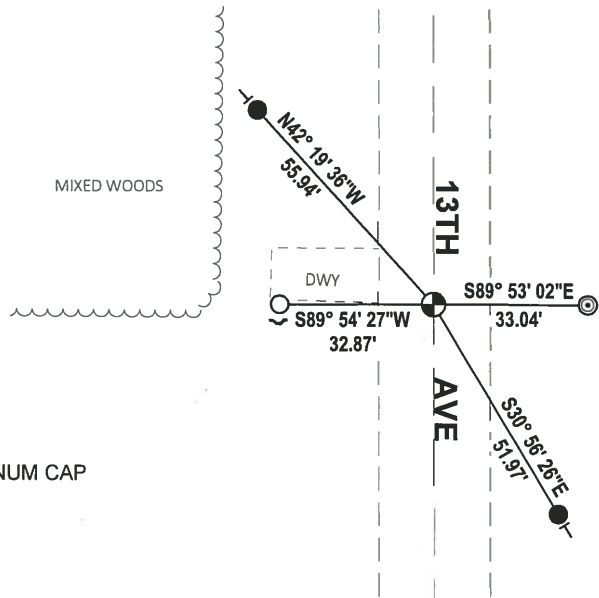
PROFESSIONAL LAND SURVEYOR

DATE 7-18-18

- TIE SKETCH



MIXED WOODS



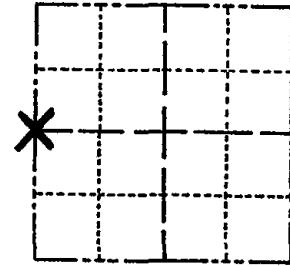
- SET 3/4" x 18" IRON REBAR, 1.50#/FT
- FOUND 3/4" IRON ROD
- ⊙ FOUND 2-3/8" O.D. IRON PIPE W/ALUMINUM CAP
- ⊕ FOUND HARRISON MONUMENT
- ↘ STEEL FENCE POST
- ↖ VINYL "T" POST

ADAMS COUNTY

Survey Monument Record

TYPE OF MONUMENT: HARRISON
 STATE PLANE COORDINATES: N _____
 E _____
 ELEVATION — M.S.L. DATUM: _____
 THETA ANGLE: _____
 FIELD BOOK: _____ PAGE _____

CORNER NO. 507⁽¹⁵⁾
 SECTION 5
 TOWN 15
 RANGE 6



LOCATION
(Indicated by 'X')

SEAL:

BASIS FOR MONUMENT LOCATION

(Use reverse side if necessary)

Show info such as: History of corner, with reference to Vol. and pg. dates, surveyor; exact description of monument replaced; if location computed, by taped or EDM traverse; landowner remarks, etc.

Excavated with backhoe. Found 1" iron pipe. Replaced with Harrison monument.

CORNER O.K. 9-25-76 RN-SS

MAINTENANCE RECORD

Date	Init.	Remarks
9-8-81	SK-NJ	
6-11-85		KEV CARLSON OK
1-17-86	GR	OR
1-10-91	KZ-SG	OK
1-10-96	JG-SS	OK
1-25-01	JG	OK

4-26-06 = JG - OK
 1-24-11 SS INEW



CERTIFIED CORRECT:

Anthony B. Kiedrowski
 Registered Land Surveyor

DATE: ~~1974~~ October 1, 1974

TIE SKETCH

(Show at least four ties)

