

01 SECTION 15 TOWN 05 RANGE

ADAMS COUNTY

COUNTY CORNER NO: 33
ROMPORTOL ID: 41505010000

PUBLIC LAND SURVEY MONUMENT RECORD

TYPE OF MONUMENT: SURVEY NAIL
ADAMS COUNTY COORDINATES, NAD 83 (2007)

N. 159327.378

E. 525860.772

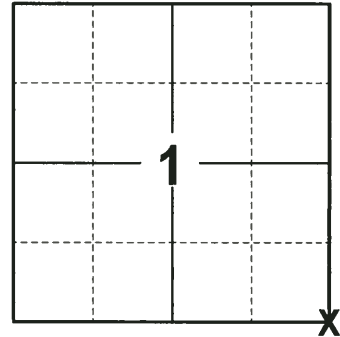
ELEVATION- DATUM

FIELD WORK DATE: 10/09/2017

BASIS FOR MONUMENT LOCATION

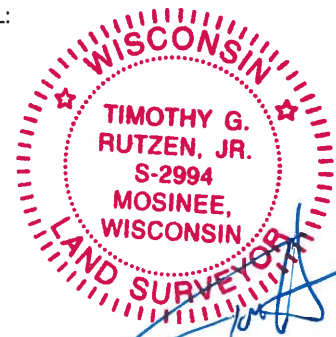
2013 - PLS 1452 SET LOCATION FROM AUG 5, 1980 TIE SHEET AND SECTION SUMMARIES TO THE NORTH AND SOUTH. SET A BERNTSEN SURVEY NAIL AT THE CORNER LOCATION AND RE-TIED.

2017 - PLS 2994 FOUND A SURVEY NAIL IN THE ROAD SURFACE AND 4 TIES. REMOVED THE SURVEY NAIL AND SEARCHED FOR A MONUMENT BELOW IT, FOUND NO EVIDENCE OF ANY MONUMENT. RE-SET THE SURVEY NAIL IN THE LOCATION THAT IT WAS FOUND. THE MONUMENT AGREES WITH THE EXISTING TIES. ACCEPTED THE SURVEY NAIL AS THE CORNER LOCATION AND RE-MEASURED TO THE EXISTING TIES.



LOCATION
(INDICATE CORNER BY "X")

SEAL:



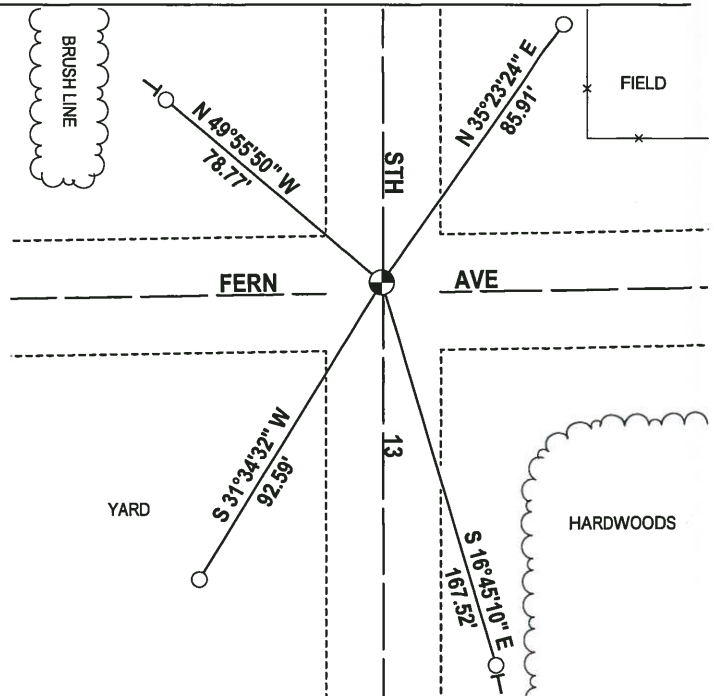
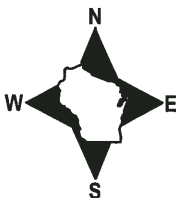
DATA SHOWN HERE ON THIS TIE SHEET IS CORRECT AND COMPLETE TO THE BEST OF MY KNOWLEDGE AND BELIEF.

PROFESSIONAL LAND SURVEYOR

DATE 12-4-17

- TIE SKETCH -

NOTE: THE CORNER FALLS 0.5'± WEST OF THE CENTERLINE OF STH 13 AND 2'± NORTH OF THE CENTERLINE OF FERN AVE.



- WISDOT ALUMINUM BERNTSEN MONUMENT FOUND
- ⊙ SURVEY NAIL FOUND
- VINYL "T" POST

