

PUBLIC LAND SURVEY MONUMENT RECORD

TYPE OF MONUMENT: HARRISON (BROKEN-TOP)
 ADAMS COUNTY COORDINATES, NAD 83 (2007)

N. 159336.369

E. 528645.253

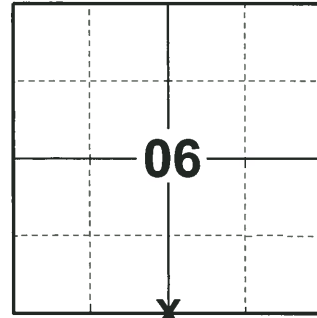
ELEVATION- - - - DATUM - - - -

FIELD WORK DATE: 06/18/2018

BASIS FOR MONUMENT LOCATION

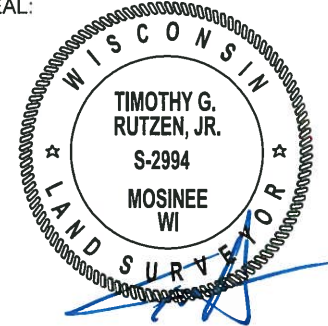
1980 - PLS 584 SET A HARRISON MONUMENT ON LINE AND PROPORTIONATE BETWEEN THE RANGE LINE TO THE WEST AND THE SECTION LINE TO THE EAST BECAUSE THERE WAS NO EVIDENCE OF THE CORNER EVER BEING SET THERE. THE TREE LINE TO THE NORTH AND SOUTH FIT VERY WELL. TIES TO NAIL AND DISCS.

2018 - PLS 2994 FOUND A HARRISON MONUMENT WITH A BROKEN-TOP 6" BELOW THE GROUND SURFACE AND 3 TIES. THE MONUMENT AGREES WITH THE EXISTING TIES. ACCEPTED THE HARRISON MONUMENT WITH A BROKEN-TOP AS THE CORNER LOCATION. SET 1 NEW TIE AND MEASURED TO THE TIES.



LOCATION
 (INDICATE CORNER BY "X")

SEAL:



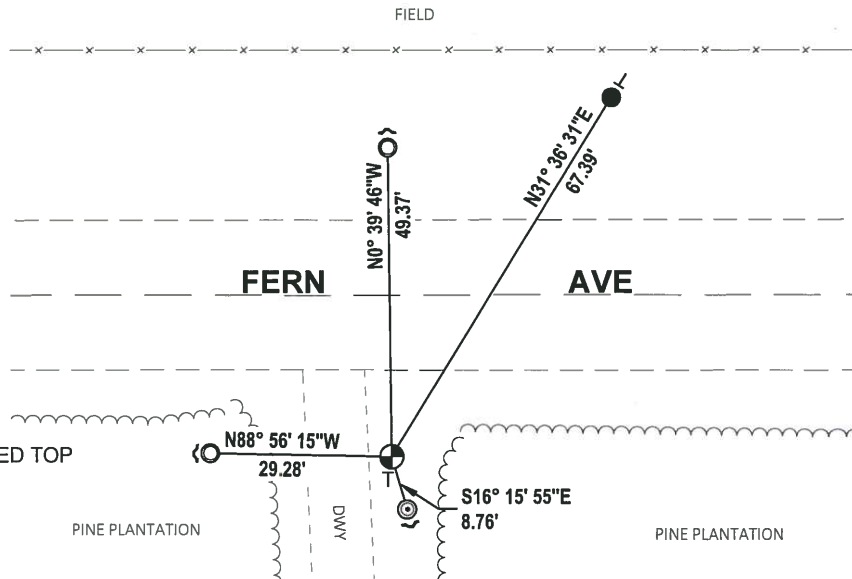
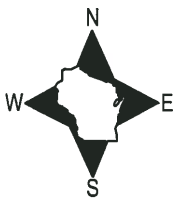
DATA SHOWN HERE ON THIS TIE SHEET IS CORRECT AND COMPLETE TO THE BEST OF MY KNOWLEDGE AND BELIEF.

PROFESSIONAL LAND SURVEYOR

DATE 7-18-18

- TIE SKETCH

NOTE: THE CORNER FALLS 26± SOUTH OF THE CENTERLINE OF FERN AVE.

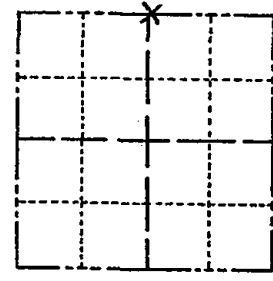


- SET 3/4" x 18" IRON REBAR, 1.50#/FT
- FOUND 1-1/4" O.D. IRON PIPE
- ⊙ FOUND 2-3/8" O.D. IRON PIPE W/CRIMPED TOP
- ⊕ FOUND HARRISON MONUMENT
- ↗ STEEL FENCE POST
- ↖ VINYL "T" POST

Government Land Corner Certificate

ADAMS County
 TYPE OF MONUMENT: HARRISON
 STATE PLANE COORDINATES: N _____
 E _____
 ELEVATION — M.S.L. DATUM: _____
 THETA ANGLE: _____
 FIELD BOOK: 54 PAGE 68a
 DRAWN BY: J. KMIEC

CORNER NO. 22
 SECTION 7
 TOWN 15
 RANGE 6



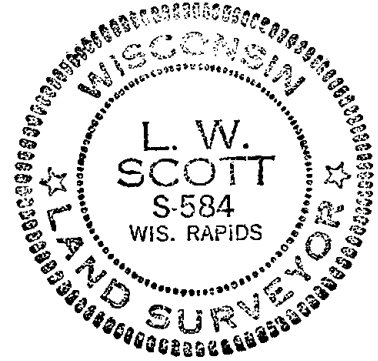
LOCATION
(Indicated by 'X')

BASIS FOR MONUMENT LOCATION

Show info such as: History of corner, with reference to Vol. and pg., dates, surveyor; exact description of monument replaced; if location computed, by taped or EDM traverse; landowner remarks, etc. (Use reverse side if necessary)

Set Harrison on line and proportion between the Range line to the West and the section line to the East because there was not any evidence of a corner being set here. Tree line to the South and to the North fit very well. Ties nail and discs.

SEAL:



DATA SHOWN HERE ON
CERTIFIED CORRECT:

L. W. Scott
Registered Land Surveyor

DATE: 10/31/80

TIE SKETCH

Show at least four ties, also fence lines, roads, topo, size and type of witness trees' and if off road - best way to arrive at corner.

