

PUBLIC LAND SURVEY MONUMENT RECORD

TYPE OF MONUMENT: HARRISON
ADAMS COUNTY COORDINATES, NAD 83 (2007)

N. 159344.972

E. 531295.460

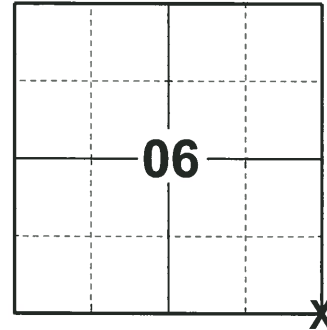
ELEVATION- - - - - DATUM - - - - -

FIELD WORK DATE: 06/18/2018

BASIS FOR MONUMENT LOCATION

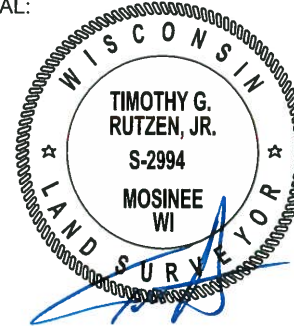
1974 - PLS 878 EXCAVATED WITH A BACKHOE. FOUND A PK NAIL, A 1/2"x24" IRON ROD IN A TIPPED POSITION AND A 12"x12"x38" CUT SANDSTONE WITH SECTION 5, 6, 7 & 8 SCRIBED ON THE RESPECTIVE SIDES. WITNESSED BY COUNTY BOARD CHAIRMAN ADOLF BORK. REPLACED SANDSTONE WITH A HARRISON MONUMENT AND TIED OUT. THE SANDSTONE IS ON DISPLAY AT KIEDROWSKI ENGINEERING, INC. OFFICE IN WISCONSIN RAPIDS.

2018 - PLS 2994 FOUND A HARRISON MONUMENT 6" BELOW THE ROAD SURFACE AND 1 TIE (TIE SEEMS TO BE DISTURBED). ACCEPTED THE HARRISON MONUMENT AS THE BEST EVIDENCE OF THE CORNER LOCATION. SET 3 NEW TIES AND MEASURED TO THE TIES.



LOCATION
(INDICATE CORNER BY "X")

SEAL:



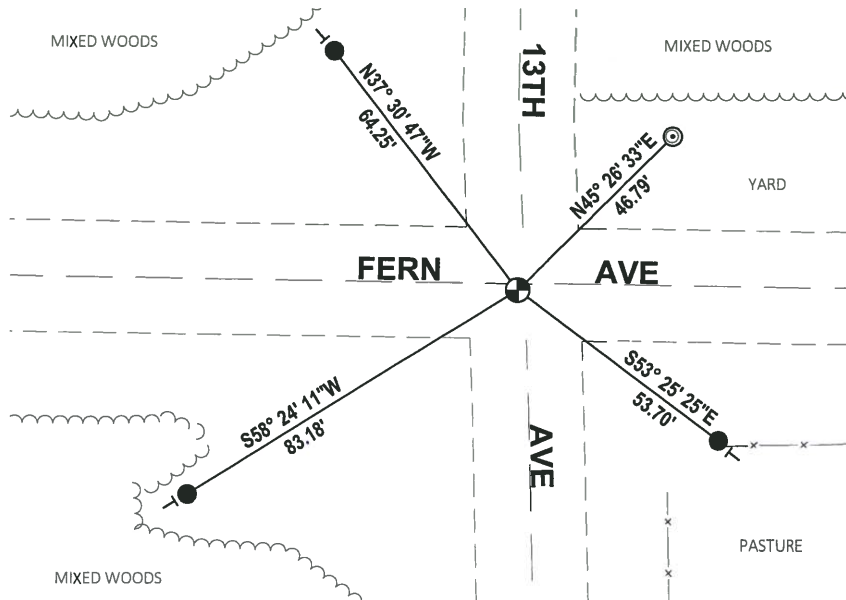
DATA SHOWN HERE ON THIS TIE SHEET IS CORRECT AND COMPLETE TO THE BEST OF MY KNOWLEDGE AND BELIEF.

PROFESSIONAL LAND SURVEYOR

DATE 7-18-18

- TIE SKETCH

NOTE: THE CORNER FALLS 1± SOUTH OF THE CENTERLINE OF FERN AVE AND 2± WEST OF THE CENTERLINE OF 13TH AVE.



- SET 3/4" x 18" IRON REBAR, 1.50#/FT
- ⊙ FOUND 2-3/8" O.D. IRON PIPE
- ⊕ FOUND HARRISON MONUMENT
- VINYL "T" POST

ADAMS COUNTY

Survey Monument Record

TYPE OF MONUMENT: HARRISON

STATE PLANE COORDINATES: N _____

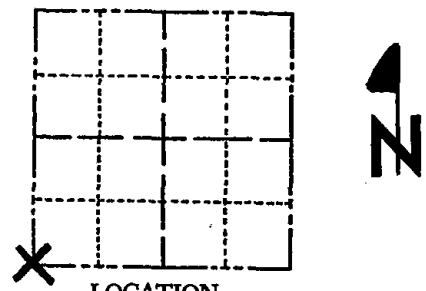
E _____

ELEVATION — M.S.L. DATUM: _____

THETA ANGLE: _____

FIELD BOOK: _____ PAGE _____

CORNER NO. 506⁽²³⁾
SECTION 5
TOWN 15
RANGE 6



LOCATION
(Indicated by 'X')

SEAL:

BASIS FOR MONUMENT LOCATION

(Use reverse side if necessary)

Show info such as: History of corner, with reference to Vol. and pg, dates, surveyor; exact description of monument replaced; if location computed, by taped or EDM traverse; landowner remarks, etc.

Excavated with backhoe. Found PK nail. Also found 1/2" x 24" iron rod in tipped position. Also found 12" x 12" x 38" cut sandstone with Sec. 5, 6, 7 & 8 scribed on the respective sides. Witnessed by County Board Chairman Adolf Bork. Replaced with Harrison Monument. Sandstone on display at Kiedrowski Engineering, Inc. office at Wisconsin Rapids. Replaced stone with Harrison.

CORNER O.K. - 9-25-76 RN-SS



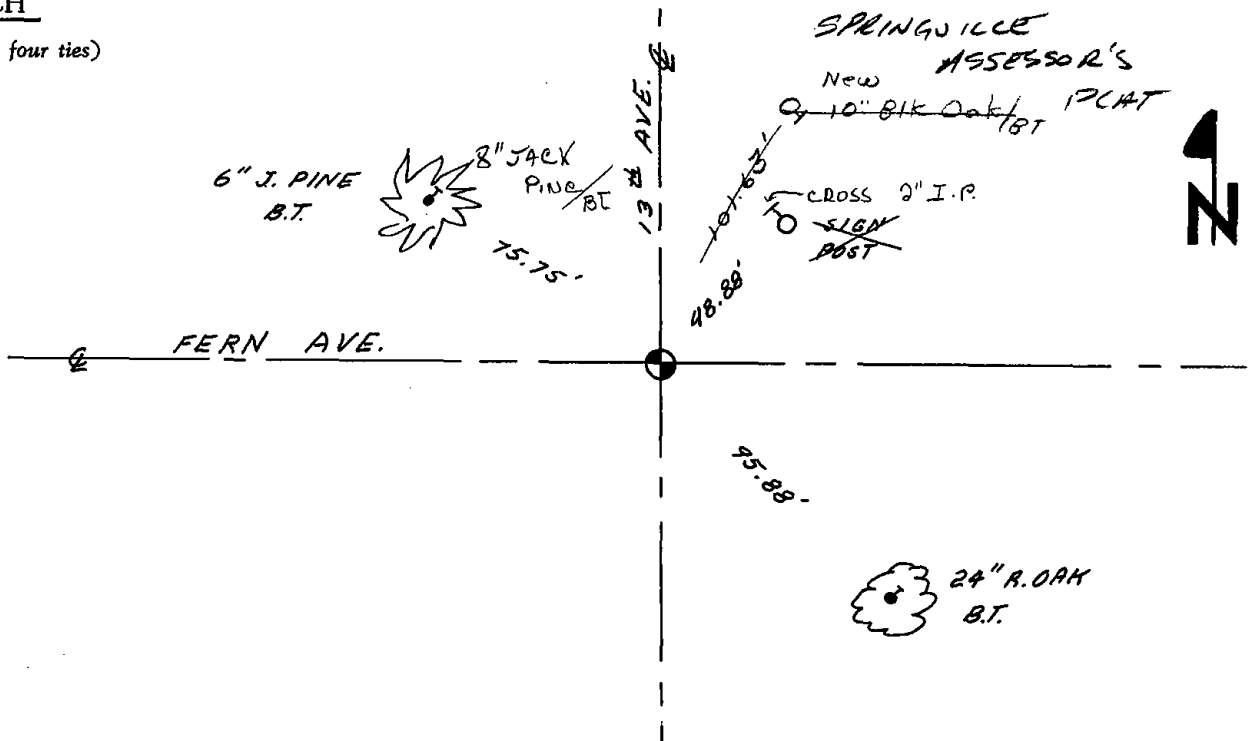
CERTIFIED CORRECT:

Anthony B. Kiedrowski
Registered Land Surveyor

DATE: October 1, 1974

TIE SKETCH

(Show at least four ties)



MAINTENANCE RECORD

Date	Init.	Remarks
9-8-81	SK-NJ	
1-17-86	GJL	OK
1-10-91	KE-SG	ALL OK
11-22-95	SS	CORNER OK
1-25-01	JG	OK
4-26-06	JG	OK