

PUBLIC LAND SURVEY MONUMENT RECORD

TYPE OF MONUMENT: HARRISON
ADAMS COUNTY COORDINATES, NAD 83 (2007)

N. 159282.552

E. 541811.600

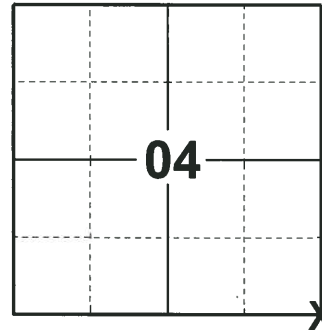
ELEVATION- - - - DATUM - - - -

FIELD WORK DATE: 06/18/2018

BASIS FOR MONUMENT LOCATION

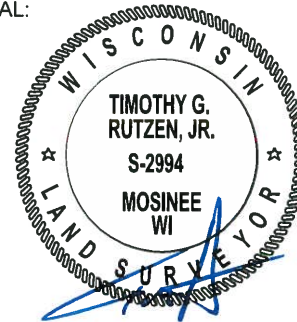
1974 - PLS 878 EXCAVATED WITH A BACKHOE AND FOUND A BUGGY AXLE 18" DOWN. REPLACED WITH A HARRISON MONUMENT AND TIED OUT.

2018 - PLS 2994 FOUND A HARRISON MONUMENT 6" BELOW THE ROAD SURFACE. FOUND NO EVIDENCE OF ANY OF THE TIES OR WITNESSES. ACCEPTED THE HARRISON MONUMENT AS THE BEST EVIDENCE OF THE CORNER LOCATION. SET 4 NEW TIES AND MEASURED TO THE TIES.



LOCATION
(INDICATE CORNER BY "X")

SEAL:



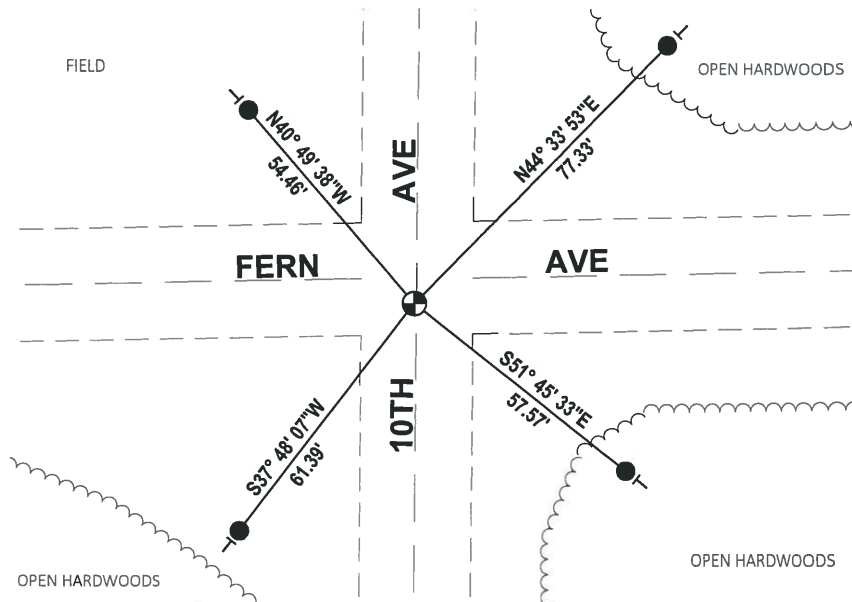
DATA SHOWN HERE ON THIS TIE SHEET IS CORRECT AND COMPLETE TO THE BEST OF MY KNOWLEDGE AND BELIEF.

PROFESSIONAL LAND SURVEYOR

DATE 7-18-18

- TIE SKETCH -

NOTE: THE CORNER FALLS 1± WEST OF THE CENTERLINE OF 10TH AVE AND 5± SOUTH OF THE CENTERLINE OF FERN AVE.



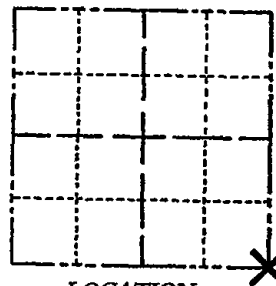
- SET 3/4" x 18" IRON REBAR, 1.50#/FT
- ⊕ FOUND HARRISON MONUMENT
- ⊖ VINYL "T" POST

ADAMS COUNTY

Survey Monument Record

TYPE OF MONUMENT: HARRISON
 STATE PLANE COORDINATES: N _____
 E _____
 ELEVATION — M.S.L. DATUM: _____
 THETA ANGLE: _____
 FIELD BOOK: _____ PAGE _____

CORNER NO. 505
 SECTION 4
 TOWN 15
 RANGE 6



LOCATION
(Indicated by 'X')



BASIS FOR MONUMENT LOCATION

(Use reverse side if necessary)

Show info such as: History of corner, with reference to Vol. and pg, dates, surveyor; exact description of monument replaced; if location computed, by taped or EDM traverse; landowner remarks; etc.

Excavated with backhoe. Found buggy axle 18" down.
 Replaced with Harrison monument.

CORNER O.K. 8-6-76 SK-SS

MAINTENANCE RECORD

Date	Init.	Remarks
10-29-81	RW-SK	MON + TIES O.K.
1-17-86	SK	OK
1-10-91	KZ-JG	ALL OK
11-21-95	SS	OK
1-25-01	JG	OK
3-07-06	JS-SS	1 New
01-13-11	SS	OK

SEAL:



CERTIFIED CORRECT:

Anthony B. Kiedrowski
 Registered Land Surveyor

DATE: October 1, 1974

TIE SKETCH

(Show at least four ties)

