

## PUBLIC LAND SURVEY MONUMENT RECORD

TYPE OF MONUMENT: HARRISON  
 ADAMS COUNTY COORDINATES, NAD 83 (2007)

N. 159472.256

E. 552381.359

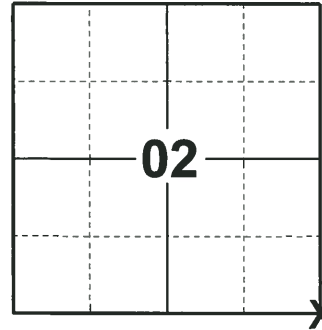
ELEVATION- - - - - DATUM - - - - -

FIELD WORK DATE: 06/13/2018

### BASIS FOR MONUMENT LOCATION

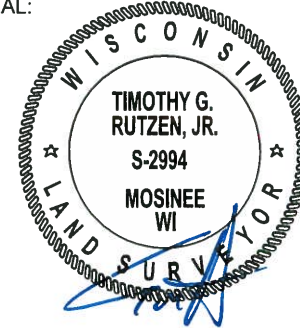
1975 - PLS 878 EXCAVATED WITH A BACKHOE AND FOUND A 4"x12"x12" SANDSTONE. LOWERED THE STONE AND SET A HARRISON ABOVE AND TIED OUT CORNER. WITNESSED BY ADOLPH BORW, LOCAL LANDOWNER AND COUNTY BOARD CHAIRMAN. THE STONE WAS BELIEVED TO BE SET BY A. BARRETT, 1902, VOL 1, PG 2.

2018 - PLS 2994 FOUND A HARRISON MONUMENT 3" BELOW THE ROAD SURFACE AND 1 PROPERTY IRON. THE MONUMENT AGREES WITH THE PROPERTY IRON BEING 33' FROM C/L. ACCEPTED THE HARRISON MONUMENT AS THE CORNER LOCATION. SET 3 NEW TIES AND MEASURED TO THE TIES.



**LOCATION**  
 (INDICATE CORNER BY "X")

SEAL:



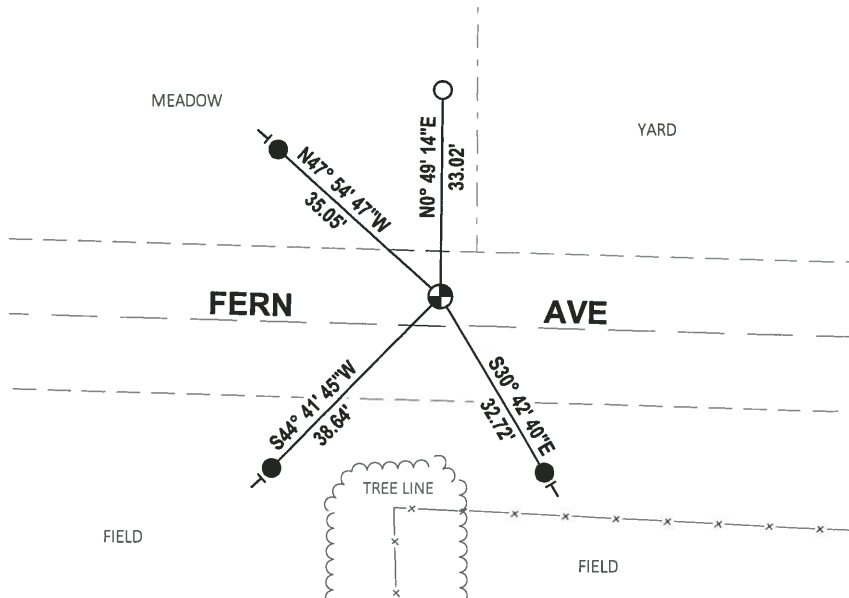
DATA SHOWN HERE ON THIS TIE SHEET IS CORRECT AND COMPLETE TO THE BEST OF MY KNOWLEDGE AND BELIEF.

PROFESSIONAL LAND SURVEYOR

DATE 7-18-18

### - TIE SKETCH

NOTE: THE CORNER FALLS 5± NORTH OF THE CENTERLINE OF FERN AVE.



- SET 3/4" x 18" IRON REBAR, 1.50#/FT
- FOUND 3/4" IRON ROD
- ⊕ FOUND HARRISON MONUMENT
- ⊥ VINYL "T" POST

ADAMS COUNTY

Survey Monument Record

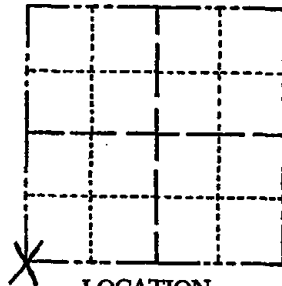
TYPE OF MONUMENT: Harrison standard  
STATE PLANE COORDINATES: N \_\_\_\_\_  
E \_\_\_\_\_

ELEVATION — M.S.L. DATUM: \_\_\_\_\_

THETA ANGLE: \_\_\_\_\_

FIELD BOOK: \_\_\_\_\_ PAGE \_\_\_\_\_

CORNER NO. 642  
SECTION 1  
TOWN 15  
RANGE 6



LOCATION  
(Indicated by 'X')

SEAL:



BASIS FOR MONUMENT LOCATION

(Use reverse side if necessary)

Show info such as: History of corner, with reference to Vol. and pg, dates, surveyor; exact description of monument replaced; if location computed, by taped or EDM traverse; landowner remarks, etc.

Excavated with backhoe. Found 4"x12"x12" sandstone. Lowered stone and set Harrison on top. Witnessed by Adolph Bork, local landowner and County Board Chairman.

Stone believed to be set by A. Barrett, 1902, Vol 1, Pg 2.

CORNER O.K. 4-23-76 RN-SS  
" " 1-16-86 GR-SS

ALL OK 1-14-91 - KE-JG  
1 GONE - SEE CSM SS 11-22-95  
CHECK FOR CSM - 1-29-01, SG-MH.  
7-11-11 OK SS

CERTIFIED CORRECT:

*Anthony B. Kiedrowski*  
Registered Land Surveyor

DATE: 4/24/75

TIE SKETCH

(Show at least four ties)

Ties are to nail and disc.

