

PUBLIC LAND SURVEY MONUMENT RECORD

TYPE OF MONUMENT: HARRISON
 ADAMS COUNTY COORDINATES, NAD 83 (2007)

N. 156873.233

E. 547076.468

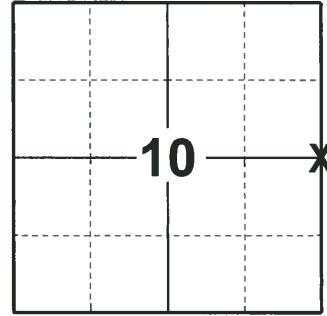
ELEVATION- - - - DATUM - - - -

FIELD WORK DATE: 06/25/2018

BASIS FOR MONUMENT LOCATION

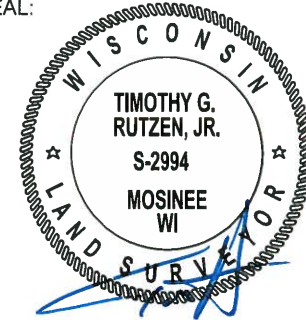
1976 - PLS 922 FOUND A TRIANGULAR POINTED STONE AT THE FENCE CORNER. NO RECORD OF THE STONE IN THE COUNTY SURVEYORS RECORDS. AFTER ANALYZING THE E.D.M. TRAVERSE OF THE SECTION, ACCEPTED THIS LOCATION AS THE CORNER LOCATION. SET A HARRISON MONUMENT AND TIED OUT.

2018 - PLS 2994 FOUND A HARRISON MONUMENT 4" ABOVE THE GROUND SURFACE. FOUND NO EVIDENCE OF ANY OF THE TIES OR WITNESSES. ACCEPTED THE HARRISON MONUMENT AS THE BEST EVIDENCE OF THE CORNER LOCATION. SET 4 NEW TIES AND MEASURED TO THE TIES.



LOCATION
 (INDICATE CORNER BY "X")

SEAL:



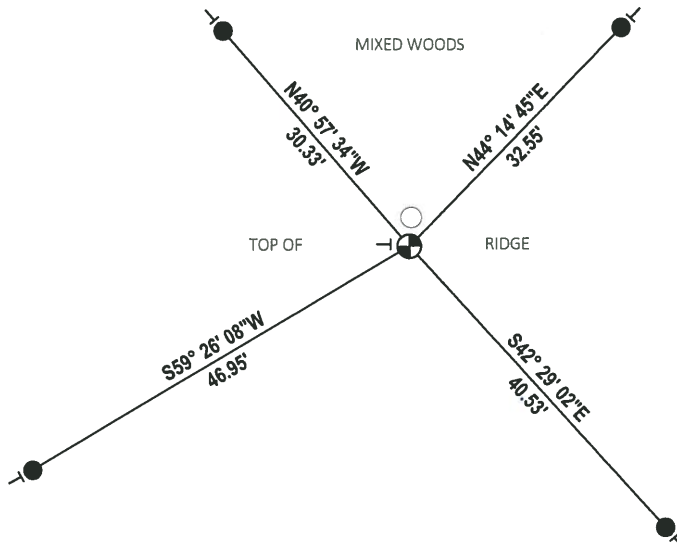
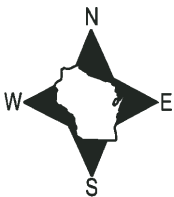
DATA SHOWN HERE ON THIS TIE SHEET IS CORRECT AND COMPLETE TO THE BEST OF MY KNOWLEDGE AND BELIEF.

PROFESSIONAL LAND SURVEYOR

DATE 7-18-18

- TIE SKETCH

NOTE: THE CORNER FALLS 120'± NORTH OF THE TOP OF SLOPE.



- SET 3/4" x 18" IRON REBAR, 1.50#/FT
- ⊕ FOUND HARRISON MONUMENT
- VINYL "T" POST
- 6" ROUND POST W/DND SIGN

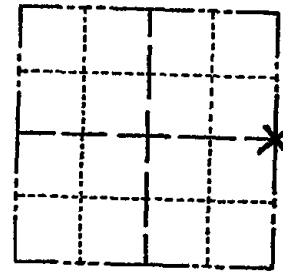
ADAMS COUNTY

Survey Monument Record

TYPE OF MONUMENT: STANDARD 30" HARRISON
STATE PLANE COORDINATES: N _____
E _____

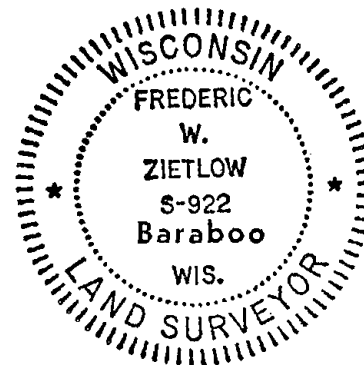
ELEVATION — M.S.L. DATUM: _____
THETA ANGLE: _____
FIELD BOOK: _____ PAGE _____

CORNER NO. 881 (38)
SECTION 10
TOWN 15N
RANGE 6E



LOCATION
(Indicated by 'X')

SEAL:



BASIS FOR MONUMENT LOCATION

(Use reverse side if necessary)

Show info such as: History of corner, with reference to Vol. and pg, dates, surveyor; exact description of monument replaced; if location computed, by taped or EDM traverse; landowner remarks, etc.

FOUND TRIANGULAR POINTED STONE AT FENCE CORNER, NOT OF RECORD IN COUNTY SURVEYORS RECORDS. AFTER ANALYZING EDM. TRAVERSE OF SECTION, WE ACCEPTED IT AS THE CORNER & MONUMENTED SAME

CORNER O.K. 10-13-76 JSS SS
USED FOR SURVEY BY K.E.I. FOR DE IO 81
O.K. AT THAT TIME

ALL OK 3-15-91 JG

1-NEW TIE, MON OK, 2/19/96 JG-CR
ALL OK, 4-28-06-JG

CERTIFIED CORRECT:

Frederic W. Zietlow
Registered Land Surveyor

DATE: FEBRUARY 25, 1976

TIE SKETCH 1 NEW TIE 7-11-11 SS

(Show at least four ties)

