

## PUBLIC LAND SURVEY MONUMENT RECORD

TYPE OF MONUMENT: HARRISON  
 ADAMS COUNTY COORDINATES, NAD 83 (2007)

N. 156842.760

E. 552340.939

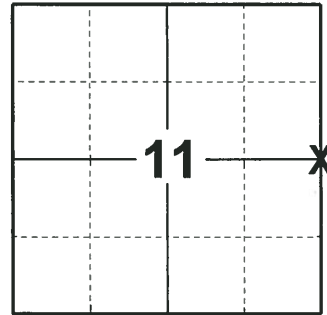
ELEVATION-      DATUM     

FIELD WORK DATE: 06/25/2018

### BASIS FOR MONUMENT LOCATION

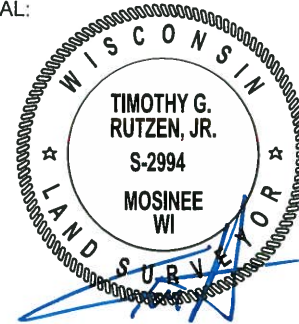
1975 - PLS 1103 TRAVERSED TO THE CORNER FROM THE NORTH IN ORDER TO DETERMINE THE SEARCH AREA. FOUND REMNANTS OF BEARING TREE (8" WHITE OAK, S 61 W, 22 LINKS). FROM THIS BEARING TREE STUMP HOLE, FOUND THE REMNANTS OF A WOOD POST IN A POST HOLE, AT THE CORNER LOCATION. THIS LOCATION ALSO FIT THE TIES TO ANOTHER BEARING TREE (10" WHITE OAK, N 82° E, 24 LINKS) WHERE ONLY A STUMP HOLE WAS FOUND. SET A HARRISON MONUMENT AND TIED OUT.

2018 - PLS 2994 FOUND A HARRISON MONUMENT 2" ABOVE THE GROUND SURFACE AND 1 WITNESS TREE. THE MONUMENT AGREES WITH THE EXISTING WITNESS TREE. ACCEPTED THE HARRISON MONUMENT AS THE CORNER LOCATION. SET 4 NEW TIES AND MEASURED TO THE TIES AND WITNESS TREE.



**LOCATION**  
 (INDICATE CORNER BY "X")

SEAL:

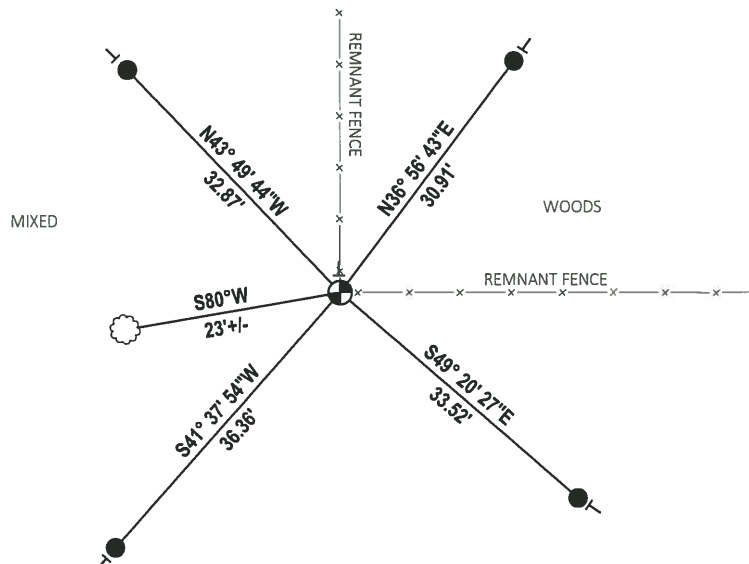
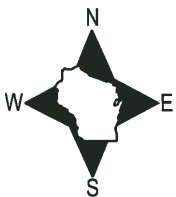


DATA SHOWN HERE ON THIS TIE SHEET IS CORRECT AND COMPLETE TO THE BEST OF MY KNOWLEDGE AND BELIEF.

PROFESSIONAL LAND SURVEYOR

DATE 7-18-18

### - TIE SKETCH



- SET 3/4" x 18" IRON REBAR, 1.50#/FT
- ⊕ FOUND HARRISON MONUMENT
- ⊥ VINYL "T" POST
- ☁ WITNESS TREE

ADAMS COUNTY

Survey Monument Record

TYPE OF MONUMENT: 30" Harrison Standard

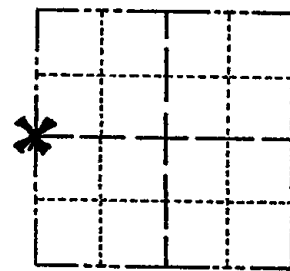
STATE PLANE COORDINATES: N \_\_\_\_\_  
E \_\_\_\_\_

ELEVATION — M.S.L. DATUM: \_\_\_\_\_

THETA ANGLE: \_\_\_\_\_

FIELD BOOK: \_\_\_\_\_ PAGE \_\_\_\_\_

CORNER NO. 629<sup>(39)</sup>  
SECTION 12  
TOWN 15 N  
RANGE 6 E



LOCATION  
(Indicated by 'X')

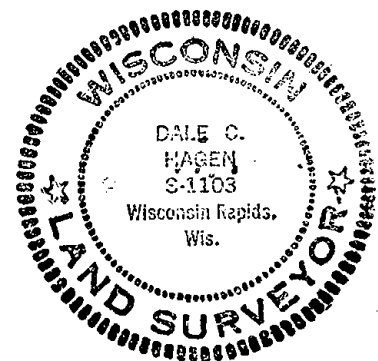
SEAL:

BASIS FOR MONUMENT LOCATION

(Use reverse side if necessary)

Show info such as: History of corner, with reference to Vol. and pg, dates, surveyor; exact description of monument replaced; if location computed, by taped or EDM traverse; landowner remarks, etc.

Traversed to corner from North in order to determine search area.  
Found remnants of bearing tree (8" White Oak, S 61° W, 22 links) as specified by M.C. Smith, Adams County Surveyor, on page 58 of Volume 1 of Adams County Survey Records, dated April, 1907.  
From this bearing tree stump hole, was able to find remnants of wood post in post hole, at corner. This location also fit the ties to another bearing tree (10" White Oak, N 82° E, 24 links) where only a stump hole was found.



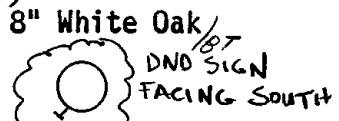
Remonumented post hole with Harrison Monument.

CORNER O.K. 4-23-76 RN-SS  
CORNER OK 3-18-91 JG  
ALL OK 2-19-96 CR-JG

CERTIFIED CORRECT:  
Dale C. Hagen  
Registered Land Surveyor  
DATE: March 28, 1975

TIE SKETCH OK, 2-17-01, JG-MH  
(Show at least four ties) OK, 4-28-06, JG

NOTE:  
Ties to PK Nail in side of tree, Blazed face toward corner.



7-11-11 OK SS

