

PUBLIC LAND SURVEY MONUMENT RECORD

TYPE OF MONUMENT: HARRISON (BROKEN-TOP)
 ADAMS COUNTY COORDINATES, NAD 83 (2007)

N. 154049.366

E. 531293.987

ELEVATION- - - - - DATUM - - - - -

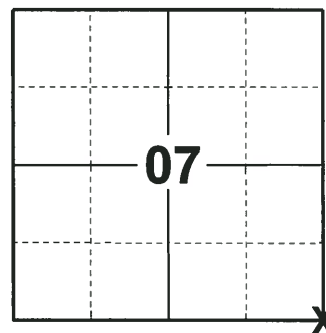
FIELD WORK DATE: 06/26/2018

BASIS FOR MONUMENT LOCATION

1980 - PLS 584 SET HARRISON AT THE END OF FENCE AFTER AN EXTENSIVE SEARCH OF THE WHOLE AREA. ALL MEASUREMENTS FROM ALL 4 DIRECTIONS BY PROPORTIONATE METHOD, FIT THE BEST FOR THE WHOLE AREA. THIS IS HIS JUDGEMENT OF HOW TO ESTABLISH THE CORNER.

1996 - PLS 1478 REDREW THE PRIOR TIE SHEET TO THE CORRECT ORIENTATION OF THE TIES.

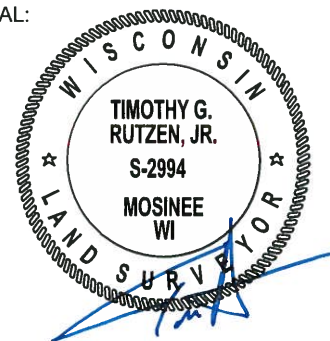
2018 - PLS 2994 FOUND A HARRISON MONUMENT WITH A BROKEN-TOP 6" BELOW THE GROUND SURFACE. FOUND NO EVIDENCE OF ANY OF THE EXISTING WITNESSES. ACCEPTED THE HARRISON MONUMENT WITH A BROKEN-TOP AS THE BEST EVIDENCE OF THE CORNER LOCATION. SET 4 NEW TIES AND MEASURED TO THE TIES.



LOCATION

(INDICATE CORNER BY "X")

SEAL:



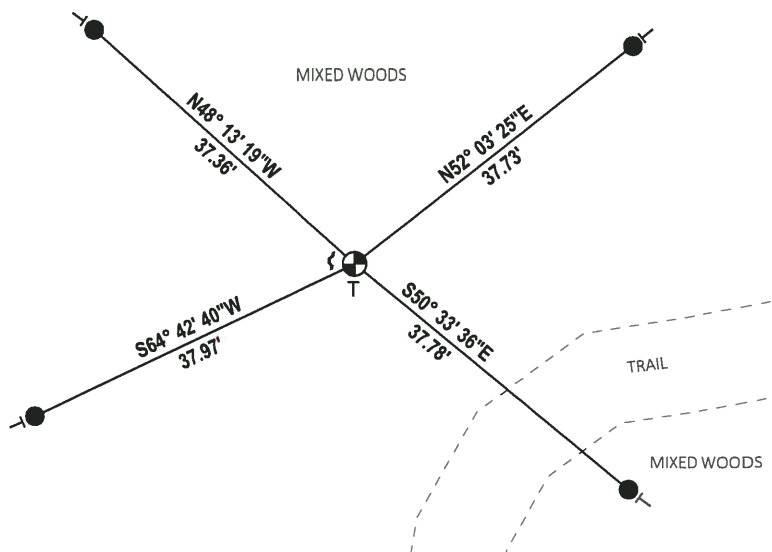
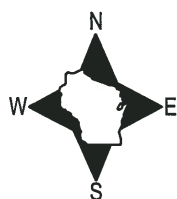
DATA SHOWN HERE ON THIS TIE SHEET IS CORRECT AND COMPLETE TO THE BEST OF MY KNOWLEDGE AND BELIEF.

PROFESSIONAL LAND SURVEYOR

DATE 8-10-18

- TIE SKETCH

NOTE: THE CORNER FALLS 25.5'± NORTHEAST OF THE CENTERLINE OF THE TRAIL.



- SET 3/4" x 18" IRON REBAR, 1.50#/FT
- ⊕ FOUND HARRISON MONUMENT (BROKEN-TOP)
- ↘ STEEL FENCE POST
- VINYL "T" POST

U.S. PUBLIC LAND SURVEY MONUMENT RECORD

ADAMS COUNTY

TYPE OF MONUMENT: HARRISON

STATE PLANE COORDINATES: N _____

E _____

ELEVATION — M.S.L. DATUM: _____

THETA ANGLE: _____

FIELD BOOK: 87 PAGE 16

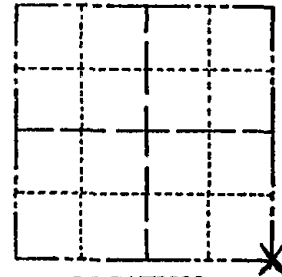
DRAWN BY: R. NUMBER

CORNER NO. 43

SECTION 7

TOWN 15

RANGE 6



LOCATION
(Indicated by 'X')

BASIS FOR MONUMENT LOCATION

Show info such as: History of corner, with reference to Vol. and pg., dates, surveyor; exact description of monument replaced; if location computed, by taped or EDM traverse; landowner remarks, etc. (Use reverse side if necessary) (in conformance with Section A-E 502 of the Wisconsin Administrative Code)

REDRAWN TO CORRECT ORIENTATION OF TIES. DTD 2/20/96

SEAL:



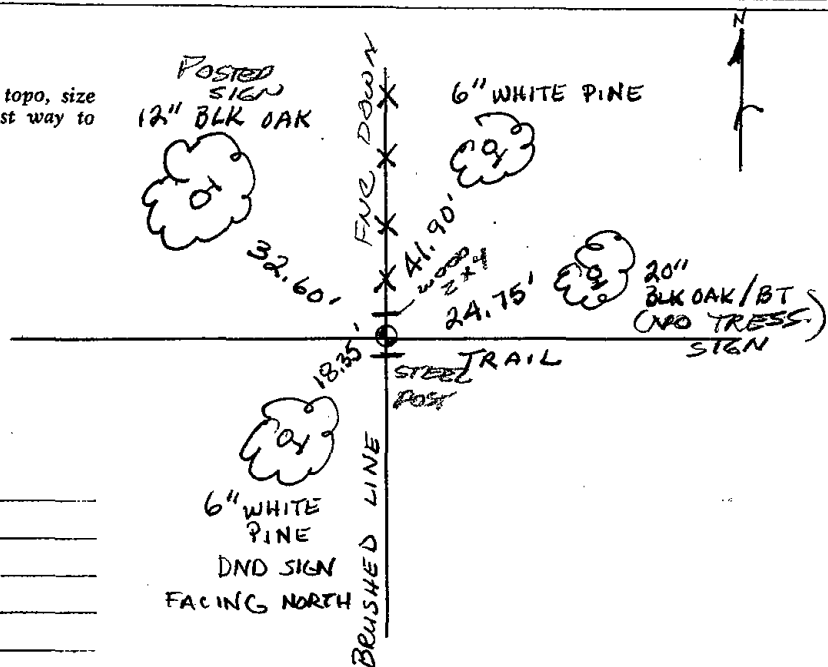
DATA SHOWN HERE ON CERTIFIED CORRECT:

G. Rhinehart
Registered Land Surveyor

DATE: 2/20/96

TIE SKETCH

Show at least four ties, also fence lines, roads, topo, size and type of witness trees' and if off road - best way to arrive at corner.



MAINTENANCE RECORD

Date	Init.	Remarks
2/19/96	CR-JG	ALL OK
2/12/01	JG-MH	DK
03-06-06	SS	OK
1-24-11	SS	OK

Government Land Corner Certificate

ADAMS County

TYPE OF MONUMENT: _____

STATE PLANE COORDINATES: N _____
E _____

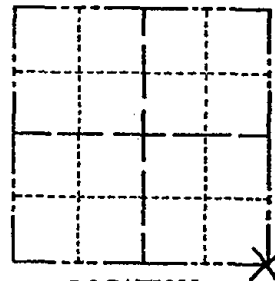
ELEVATION — M.S.L. DATUM: _____

THETA ANGLE: _____

FIELD BOOK: 87 PAGE 16

DRAWN BY: R. NUBER

CORNER NO. 43
SECTION 7
TOWN 15
RANGE 6

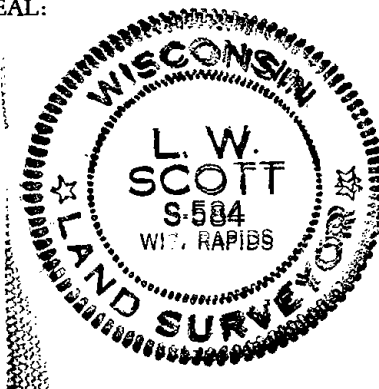


BASIS FOR MONUMENT LOCATION

Show info such as: History of corner, with reference to Vol. and pg., dates, surveyor; exact description of monument replaced; if location computed, by taped or EDM traverse; landowner remarks, etc. (Use reverse side if necessary)

Set Harrison at end of fence after extensive search of the whole area and all the measurements from all 4 directions by proportionate fit the best for the whole area. This is a judgement of mine on how to set it.

SEAL:



DATA SHOWN HERE ON
CERTIFIED CORRECT

L. W. Scott
Registered Land Surveyor

DATE: Sept 3, 1980

TIE SKETCH

Show at least four ties, also fence lines, roads, topo, size and type of witness trees and if off road - best way to arrive at corner.

