

## PUBLIC LAND SURVEY MONUMENT RECORD

TYPE OF MONUMENT: HARRISON  
 ADAMS COUNTY COORDINATES, NAD 83 (2007)

N. 154007.283

E. 541777.446

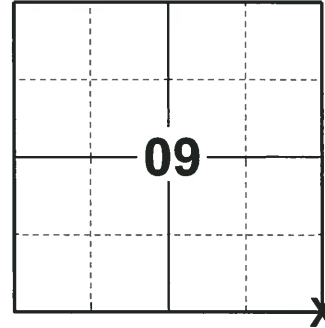
ELEVATION-      DATUM     

FIELD WORK DATE: 06/19/2018

### BASIS FOR MONUMENT LOCATION

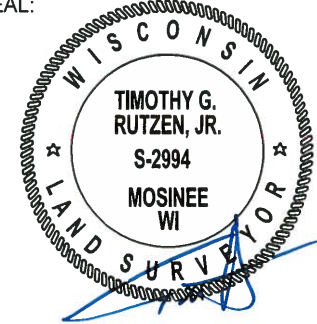
1973 - PLS 878 EXCAVATED THE AREA AND FOUND A 3" SQUARE HOLE WITH REMNANTS OF A PINE POST EXTENDING 30" INTO THE SUBSOIL. IN ADDITION, FOUND A P.K. NAIL TO THE SOUTHWEST. MONUMENTED THE POINT MARKED BY THE OLD WOOD POST WITH A HARRISON AND TIED OUT.

2018 - PLS 2994 FOUND A HARRISON MONUMENT 4" BELOW THE ROAD SURFACE AND 2 TIES. THE MONUMENT AGREES WITH THE EXISTING TIES. ACCEPTED THE HARRISON MONUMENT AS THE CORNER LOCATION. SET 2 NEW TIES AND MEASURED TO THE TIES.



**LOCATION**  
 (INDICATE CORNER BY "X")

SEAL:



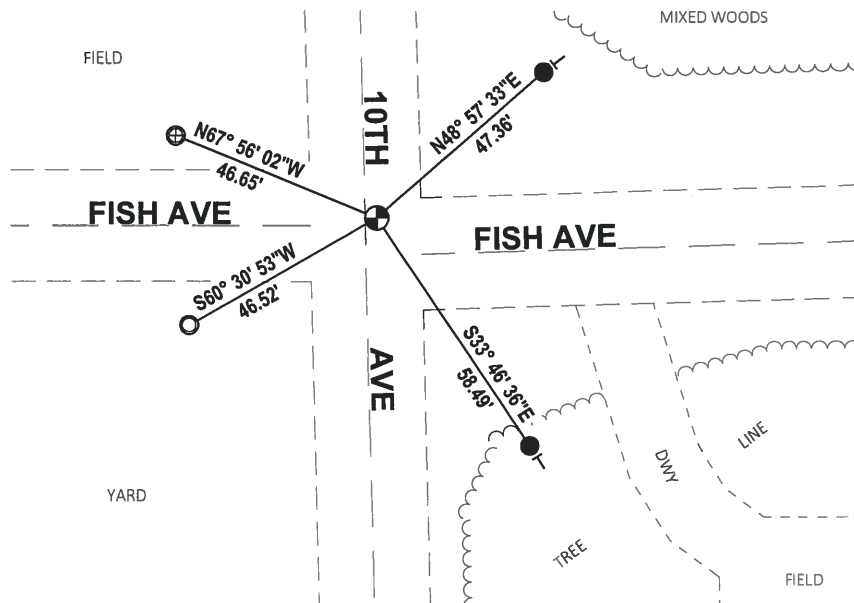
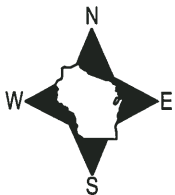
DATA SHOWN HERE ON THIS TIE SHEET IS CORRECT AND COMPLETE TO THE BEST OF MY KNOWLEDGE AND BELIEF.

PROFESSIONAL LAND SURVEYOR

DATE 8-10-18

### - TIE SKETCH

NOTE: THE CORNER FALLS 5'± NORTH OF THE CENTERLINE OF FISH AVE AND 3'± EAST OF THE CENTERLINE OF 10TH AVE.



- SET 3/4" x 18" IRON REBAR, 1.50#/FT
- ⊕ FOUND 3/4" O.D. IRON PIPE
- FOUND 1-1/4" O.D. IRON PIPE
- ⊕ FOUND HARRISON MONUMENT
- VINYL "T" POST

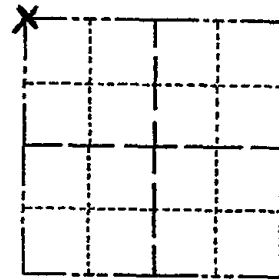
ADAMS COUNTY

Survey Monument Record

TYPE OF MONUMENT: Harrison standard  
STATE PLANE COORDINATES: N \_\_\_\_\_  
E \_\_\_\_\_

ELEVATION — M.S.L. DATUM: \_\_\_\_\_  
THETA ANGLE: \_\_\_\_\_  
FIELD BOOK: 107 PAGE 48

CORNER NO. 229  
SECTION 15  
TOWN 15  
RANGE 6



LOCATION  
(Indicated by 'X')

SEAL:



BASIS FOR MONUMENT LOCATION

(Use reverse side if necessary)

Show info such as: History of corner, with reference to Vol. and pg, dates, surveyor; exact description of monument replaced; if location computed, by taped or EDM traverse; landowner remarks, etc.

Excavated area and found 3" square hole with remnants of pine post extending 30" into subsoil. Also found P.K. Nail as shown in tie sketch. I monumented the point marked by the old wood post. Excavation witnessed by Jon Neidhold of the state highway dept. and local grader operator Theodore Stone.

CORNER O.K. 9-25-76 RN-SS  
CORNER OK 1-21-86 GR-SS  
CORNER OK 1-10-91 KZ-JG  
" " 11-22-95 SS  
OK 1-25-01 JG

SEE ATTACHED SHEET DTD 9-30-05 SH/mlc  
OK 3-7-06 JS-SS  
OK 01-13-11 SS

CERTIFIED CORRECT:

*Anthony B. Kiedrowski*  
Registered Land Surveyor  
DATE: 2-22-78

TIE SKETCH

(Show at least four ties)

