

PUBLIC LAND SURVEY MONUMENT RECORD

TYPE OF MONUMENT: HARRISON
 ADAMS COUNTY COORDINATES, NAD 83 (2007)

N. 154078.659

E. 544416.748

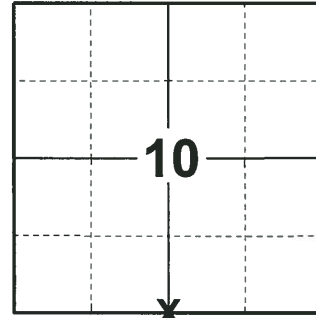
ELEVATION- - - - DATUM - - - -

FIELD WORK DATE: 06/19/2018

BASIS FOR MONUMENT LOCATION

1973 - PLS 878 EXCAVATED WITH A BACKHOE AND FOUND A 2-1/2"x5"x16" SQUARE CUT SANDSTONE. SET A HARRISON MONUMENT THE SAME AND TIED OUT.

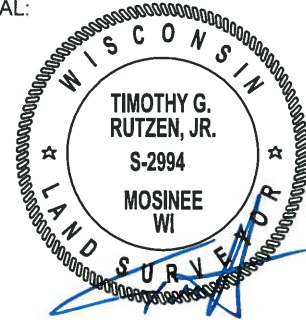
2018 - PLS 2994 FOUND A HARRISON MONUMENT 4" BELOW THE ROAD SURFACE AND 1 WITNESS TREE. THE MONUMENT AGREES WITH THE EXISTING WITNESS TREE. ACCEPTED THE HARRISON MONUMENT AS THE CORNER LOCATION. SET 4 NEW TIES AND MEASURED TO THE TIES AND WITNESS TREE.



LOCATION

(INDICATE CORNER BY "X")

SEAL:



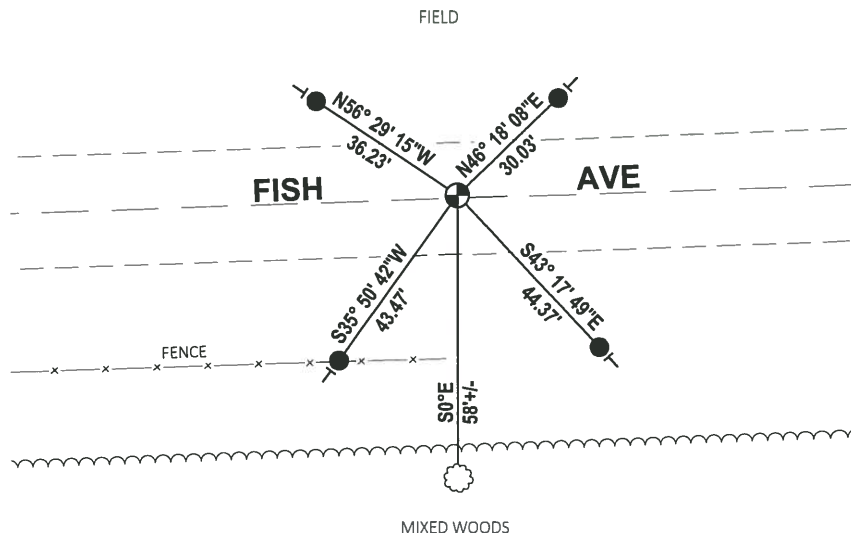
DATA SHOWN HERE ON THIS TIE SHEET IS CORRECT AND COMPLETE TO THE BEST OF MY KNOWLEDGE AND BELIEF.

PROFESSIONAL LAND SURVEYOR

DATE 7-18-18

TIE SKETCH

NOTE: THE CORNER FALLS 0.5'± NORTH OF THE CENTERLINE OF FISH AVE.



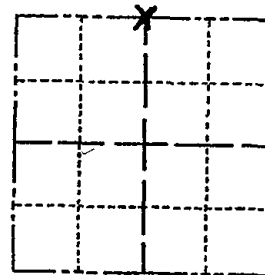
- SET 3/4" x 18" IRON REBAR, 1.50#/FT
- ⊕ FOUND HARRISON MONUMENT
- VINYL "T" POST
- ⊗ WITNESS TREE

ADAMS COUNTY

Survey Monument Record

TYPE OF MONUMENT: Harrison standard
 STATE PLANE COORDINATES: N _____
 E _____
 ELEVATION — M.S.L. DATUM: _____
 THETA ANGLE: _____
 FIELD BOOK: 107 PAGE 48

CORNER NO. 228
 SECTION 15
 TOWN 15
 RANGE 6



LOCATION
(Indicated by 'X')

SEAL:



BASIS FOR MONUMENT LOCATION

(Use reverse side if necessary)

Show info such as: History of corner, with reference to Vol. and pg. dates, surveyor; exact description of monument replaced; if location computed, by taped or EDM traverse; landowner remarks, etc.

Excavated with backhoe.
 Found 2½" x 5" x 16" square cut sandstone. Monumented same.

CORNER O.K. - New ties 8-6-76 SK-SS

MAINTENANCE RECORD

Date	Init.	Remarks
12-30-81	RW-SS	CORNER O.K.
1-21-86	GR-SS	OK
1-14-91	KE JG	ALL OK
11-22-95	SS	OK
1-29-01	JG-MH	1-GONE, 2-NEW, MON. OK
3-07-06	JS-SS	OK
01-13-11	SS	OK

CERTIFIED CORRECT:

Anthony B. Kiedrowski
 Registered Land Surveyor

DATE: 2-22-73

TIE SKETCH

(Show at least four ties)

